

Parts List

<u>ITEM NO.</u>	<u>PART NO.</u>	<u>DESCRIPTION</u>	<u>QTY</u>
1	250-16598	Bracket, Caliper Mounting	2
2	230-12720	Bolt, M12-1.75 x 35mm, Hex Head	4
3	240-0476	Washer, .477" I.D. x .922" O.D. x .063" Thick	4
4	240-6320	Shim, .033" Thick	12
5	300-16591	Adapter, Rotor, 4 x 5.924" Bolt Circle	2
6	160-16515	Rotor, 11.25" Diameter x .25" Thick, Dynamic Mount, 8-Lug	2
6A	160-16979	Rotor, SRP Drilled	2
7	310-11775	Snap Ring, 7.18" Diameter	2
8	180-15902	Cotter Pin	2
9	120-16566/67-BK	Caliper, UTV6, Black, (one each, right & left), included with p/n 140-16626	2
9	120-16566/67	Caliper, UTV6, Anodized, (one each, right & left), included with p/n 140-17038	2
9A	120-16566/67-RD	Caliper, UTV6, Red, (one each, right & left)	4
10	230-12856	Bolt, M10-1.50 x 25mm, Hex Head	4
11	240-1934	Washer, .406" I.D. x .820" O.D. x .060" Thick	1
12	150-9136K	Pad, BP-10 Compound, Axle Set, included with p/n 140-16626	1
12	15E-9837K	Pad, PolyMatrix Compound E, Axle Set, included with p/n 140-17038	1
13	230-16715	Bolt, Banjo, M10-1.25 x 20mm	2
14	240-5227	Washer, Copper, Crush, .406" I.D. x .625" O.D. x .063" Thick	4

NOTES:

Part Number 230-12847 Bracket Mounting Bolt Kit,
includes part numbers 230-12720, 240-0476, & 240-6320

Part Number 230-16777 Caliper Mounting Bolt Kit,
includes part numbers 230-12856 and 240-1934

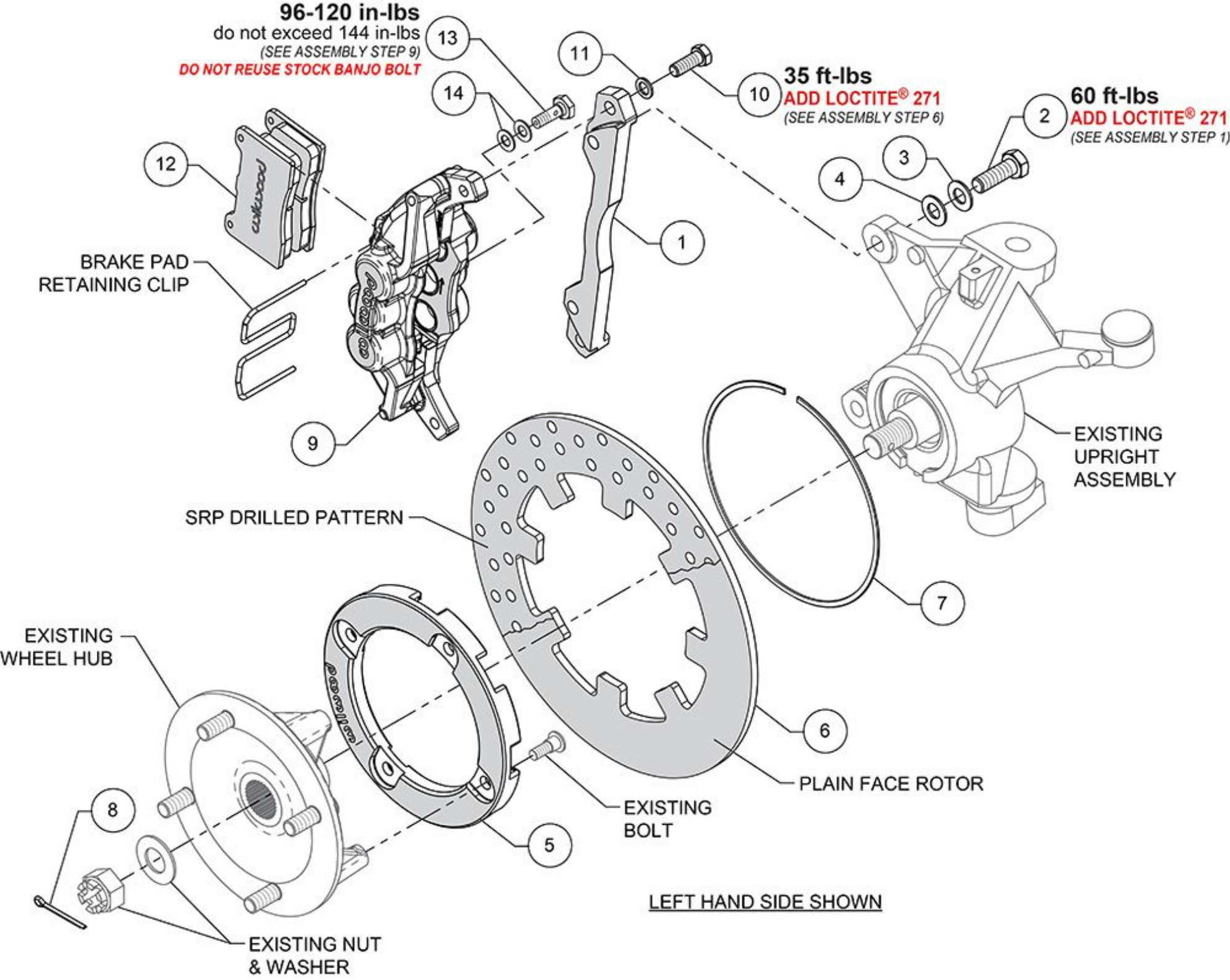
Item 6A is an optional item for **p/n 140-16626** and is included
in the "-D" drilled rotor kits. Add "-D" to end of kit part
number when ordering

Item 9A is an optional item for **p/n 140-16626** and is included
with the "-R" red caliper kits. Add "-R" to the end of the
part number when ordering

96-120 in-lbs
do not exceed 144 in-lbs
(SEE ASSEMBLY STEP 9)
DO NOT REUSE STOCK BANJO BOLT

35 ft-lbs
ADD LOCTITE® 271
(SEE ASSEMBLY STEP 6)

60 ft-lbs
ADD LOCTITE® 271
(SEE ASSEMBLY STEP 1)



BRAKE PAD
RETAINING CLIP

SRP DRILLED PATTERN

EXISTING
WHEEL HUB

EXISTING
UPRIGHT
ASSEMBLY

PLAIN FACE ROTOR

EXISTING
BOLT

EXISTING NUT
& WASHER

LEFT HAND SIDE SHOWN