

ITEM NO	PART NUMBER	DESCRIPTION	QTY	REV
1	5245385	HD-7PXW LIFT SUPERSTRUCTURE	1	T
2	5250166	PARTS BOX HD-7PXW	1	J
3	5905200	4 POST DECAL KIT, LESS ALI	1	B
4	5905465	MANUFACTURER LABEL	1	--
5	5905645	MAX CAP NRTL DANGER 7K	1	--
6	5905940	PRODUCT DATA LABEL	1	--
7	5905952	5905952-2015_Serial_Tag-C	1	--
8	5905401	MAX CAP DANGER 7K	1	--
9	5905103	WARNING ALI/WL 200	1	--

DO NOT SCALE DRAWING

NAME	DATE
DRAWN	
CHECKED	

THIRD ANGLE PROJECTION

BP BendPak.
1645 LEMONWOOD DR.
SANTA PAULA, CA 93060

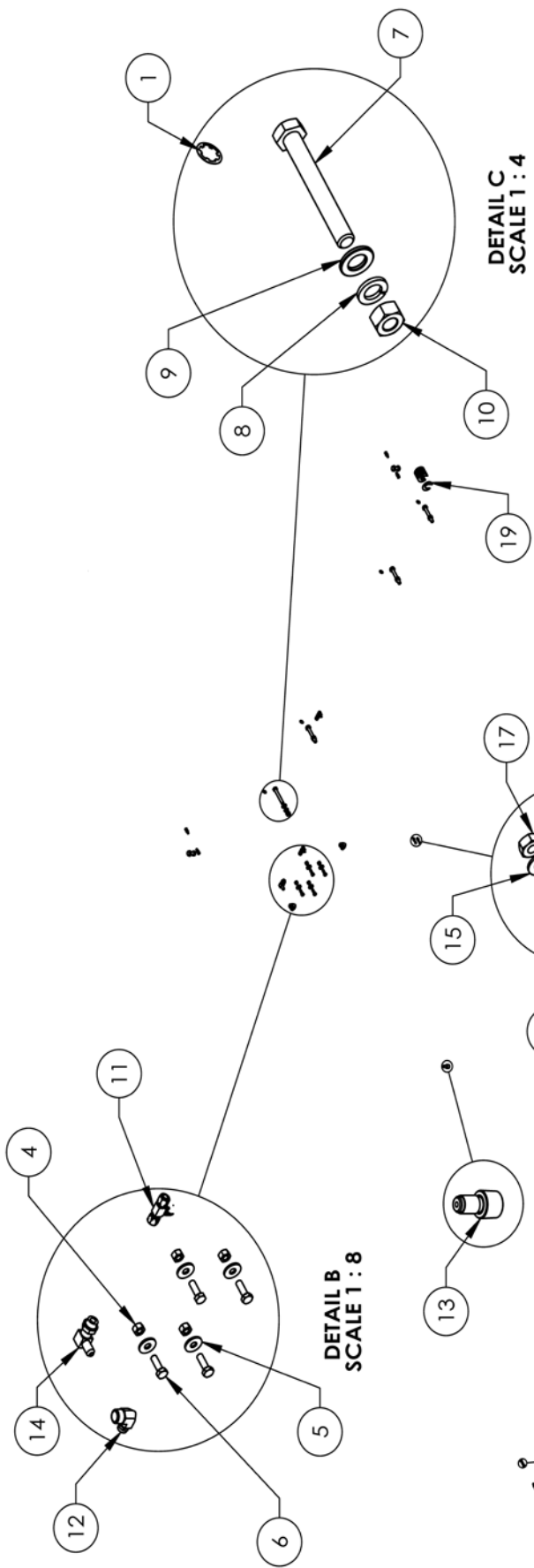
TITLE: HD-7PXW PRODUCTION LIFT VER E

SIZE DWG. NO. A 5260514 REV

SCALE: 1:50 SHEET 1 OF 2

DIMENSIONS ARE IN MM

PROPRIETARY AND CONFIDENTIAL
THE INFORMATION CONTAINED IN THIS DRAWING IS THE PROPERTY OF BENDPAK INC. ANY REPRODUCTION IN PART OR AS A WHOLE WITHOUT THE WRITTEN PERMISSION OF BENDPAK INC. IS PROHIBITED.



DETAIL C
SCALE 1 : 4

DETAIL D
SCALE 1 : 4

DETAIL F
SCALE 1 : 2


DETAIL A
SCALE 1 : 4

DETAIL E
SCALE 1 : 4

ITEM NO.	PART NUMBER	DESCRIPTION	QTY.	REV.
1	5505031	ROTOR CLIP 12mm SS	8	-
2	5530756	HHB M6 x 1 x 25	8	-
3	5535357	NUT M6 x 1.0 NL	8	-
4	5535001	NUT M8 x 1.25 NL	4	-
5	5545340	WASHER M8 x24 FLAT	4	-
6	5530010	HHB M8 x 1.25 x 25	4	-
7	5530009	HHB M12 x 1.75 x 90 CL8.8	8	-
8	5545201	WASHER M12 SPRING LOCK	8	-
9	5545347	WASHER M12 FLAT WASHER	12	-
10	5535354	NUT M12 x 1.75	12	-
11	5550395	FIG TEE -04 COMP x-04 COMP x-06 NPT	3	-
12	5550089	FIG ELB -04 COMP x-06 NPT	2	-
13	5550493	FIG RST -04 JIC x-06 NPT x.062 ID	1	-
14	5550008	FIG ELB -04 JIC -06L ORB	1	-
15	5545009	WASHER Ø4.3 x Ø9mm x 0.8mm	2	-
16	5530008	SHCS M4 x 0.7 x 12 BOC	2	-
17	5535010	NUT M4 X 0.7	2	-
18	5530076	HHB M12 x 1.75 x 35mm	4	-
19	5545535	C WASHER SHIM FOR LIFTS	19	-

DO NOT SCALE DRAWING
DIMENSIONS ARE IN MM

NAME _____ DATE _____
DRAWN _____ CHECKED _____

THIRD ANGLE PROJECTION


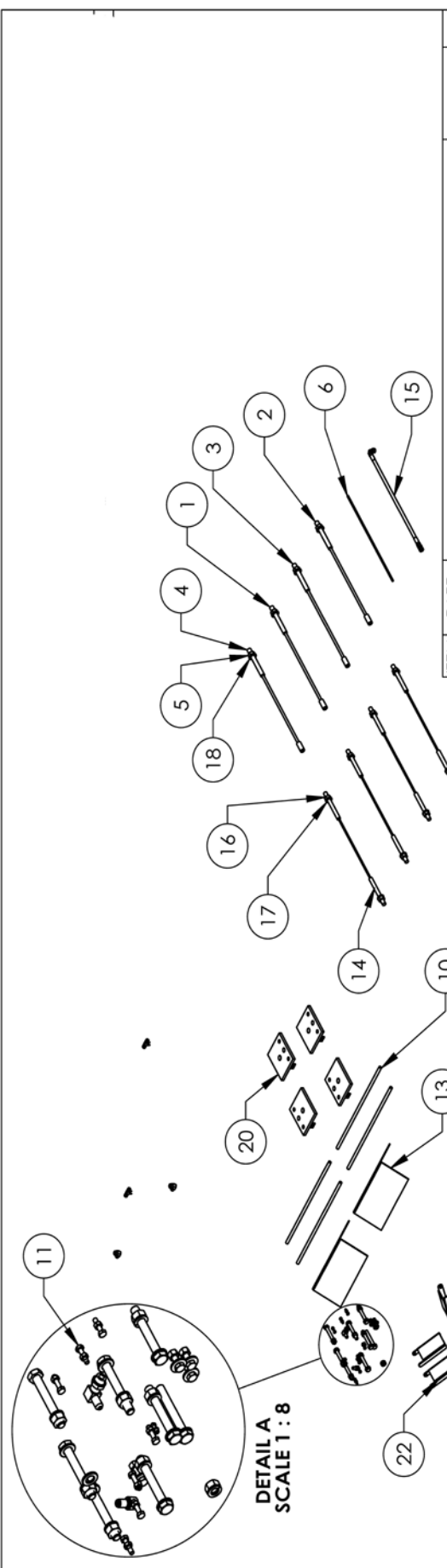
TITLE: **HD-7PX SERIES PARTS BAG**
 SIZE DWG. NO. **A 517 4097**
 REV _____

MATERIAL: _____
 SIZE: _____

PROPRIETARY AND CONFIDENTIAL
 THE INFORMATION CONTAINED IN THIS DRAWING IS THE PROPERTY OF BENDPAK INC. ANY REPRODUCTION IN PART OR AS A WHOLE WITHOUT THE WRITTEN PERMISSION OF BENDPAK INC. IS PROHIBITED.

SCALE: 1:30
 SHEET 1 OF 1

BendPak 1645 LEMONWOOD DR.
 SANTA PAULA, CA 93066



ITEM NO	PART NUMBER	DESCRIPTION	QTY.	REV
1	5595467	HD-7PXW CABLE ASSEMBLY Ø10 x 5704mm ST	1	B
2	5595053	HD-7PXW CABLE ASSEMBLY Ø10 x 7301mm ST	1	E
3	5595469	HD-7PXW CABLE ASSEMBLY Ø10 x 10484mm ST	1	B
4	5595055	HD-7PXW CABLE ASSEMBLY Ø10 x 12072mm ST	1	E
5	5535358	NUT M18 x 2.5 NL	4	-
6	5570795	1/4" POLY-FLO TUBING	20000	mm
7	5570055	HD-7PXW SERIES FLEX TUBE ASSEMBLY 2440mm	1	D
8	5215155	HD-PX SERIES FLEX TUBE BRACKET ASSY	1	F
9	5715003	POWER UNIT VIBRATION DAMPENER	1	B
10	5745014	HD-777500/9 SERIES DRIVE UP RAMP PIN	4	B
11	5174097	HD-7PX SERIES PARTS BAG	1	E
12	5700033	HD-SERIES FLEX TUBE ANGLE	1	E
13	5700072	WHEEL CHOCK	2	B
14	5595032	HD-7PX SERIES CABLE ASSY Ø6 x 5770mm DT	4	E
15	5570876	HD-7PX SERIES HYDRAULIC HOSE ASSEMBLY Ø6.4 x 4090mm	1	F
16	5535021	NUT M16 x 2.0	8	-
17	5545025	WASHER M16 x 30mm FLAT	8	-
18	5545342	WASHER M18 FLAT	4	-
19	5530456	AB 3/4" x 4 - 3/4"	16	-
20	5600255	HD-7PX SERIES POST TOP PLATE WELDMENT	4	B
21	5900041	HD-7 SERIES INSTALLATION MANUAL	1	-
22	5716630	HD-9 SERIES CROSSTUBE COVER, PLASTIC	4	A
23	5550025	FTG GRS M6 x 1.0	12	-
24	5716005	HD-777500/9/14/HD50-14 POLYETHYLENE SLIDE BLOCK	16	L

DO NOT SCALE DRAWING

NAME _____ DATE _____

DRAWN _____

CHECKED _____

THIRD ANGLE PROJECTION

DIMENSIONS ARE IN MM

BP BendPak.
1645 LEMONWOOD DR.
SANTA PAULA, CA 93060

TITLE: PARTS BOX HD-7PXW

SIZE DWG. NO. **A** 5250166

REV _____

SCALE: 1:25

SHEET 1 OF 1

PROPRIETARY AND CONFIDENTIAL
THE INFORMATION CONTAINED HEREIN IS
THE SOLE PROPERTY OF BENDPAK INC. ANY
REPRODUCTION IN PART OR AS A WHOLE WITHOUT
THE WRITTEN PERMISSION OF BENDPAK INC. IS
PROHIBITED.