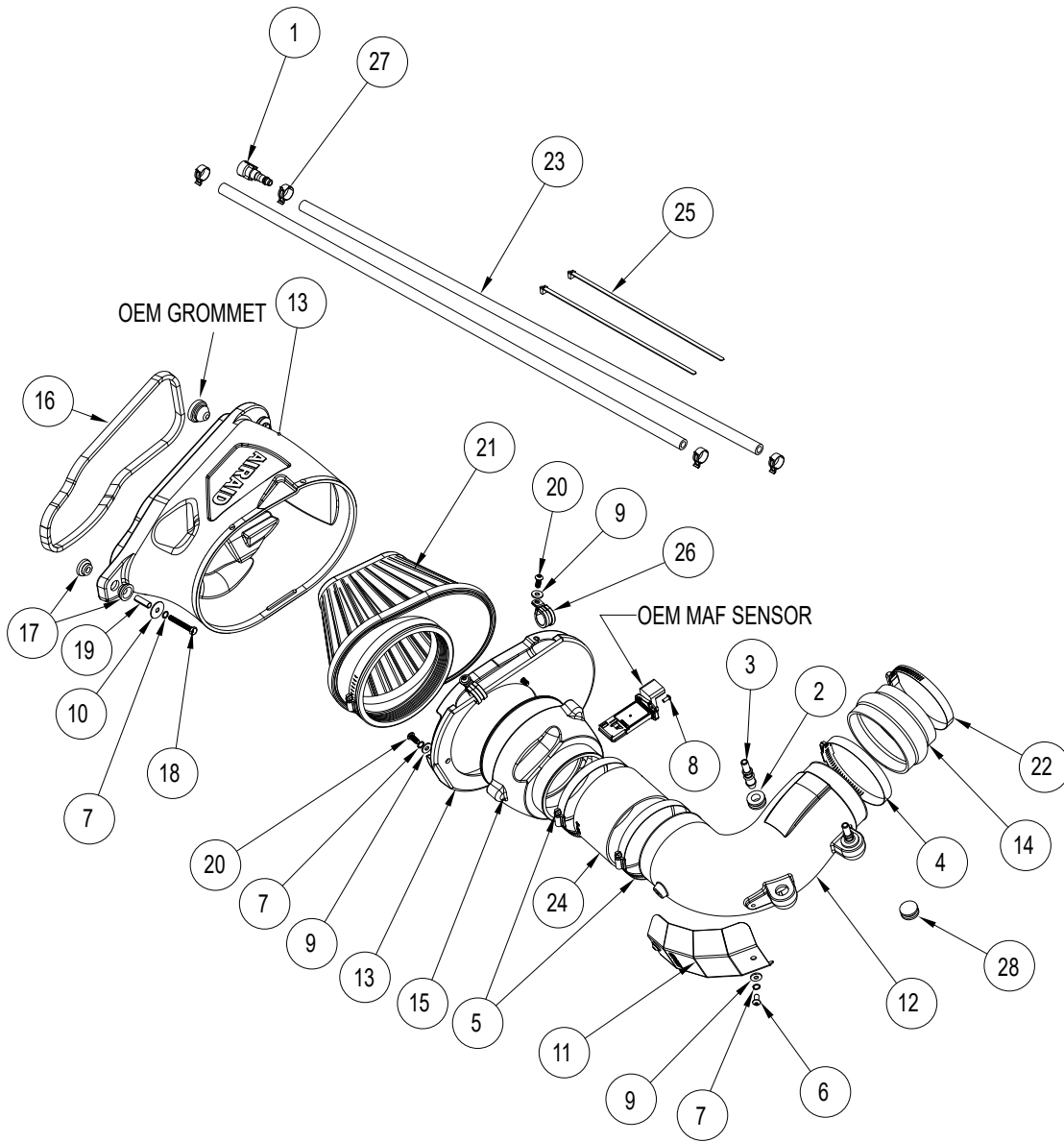


NOT LEGAL FOR SALE OR USE ON ANY POLLUTION CONTROLLED MOTOR VEHICLE IN CALIFORNIA OR STATES ADOPTING CALIFORNIA EMISSION PROCEDURES.



Component Identification

1	082629	FITTING; 3/8ID QUICK DISCONNECT TO 3/8	1
2	KITGRMT03	GROMMET, 0.500ID-0.750GD-0.190GW	2
3	KITFITTING05	COUPLER, HOSE ALUM .500 X .375	2
4	KITHS64	CLAMP, HOSE .563W 3.563MIN 4.500MAX	1
5	KITHS72	CLAMP, HOSE .563W 1.875MIN 5.000MAX	2
6	KIT15DHC3050	SCREW, BUTTON HEAD CAP 1/4-20 X .500L	2
7	08198	WASHER, SPLIT LOCK, 1/4"	9
8	KIT15BHC3038	SCREW, BUTTON HEAD CAP SS 8-32 X .375	2
9	08275	WASHER, FLAT	7
10	08160	WASHER, FLAT	2
11	KIT274HS	HEAT SHIELD, 250-274	1
12	KIT274T	TUBE, INTAKE, 250-274	1
13	KIT274CAB-DAM	AIRBOX, INTAKE, 250-274	1
14	KITHUMPHS48	HUMPHOSE, REDUCING 4.250D-3.875D-2.500L	1
15	KIT274MAFADA	FILTER ADAPTER, 250-274	1
16	KIT298G	.500 X .312 FOAM, 31" L	2
17	KITGRMT15-1	POST GROMMET	4
18	KIT20CSCZ6450	HEX BOLT, 6MM X 45MM	2
19	KITSPACER11	SPACER, .26 ID X .34 OD X 1.00 L	2
20	KIT142058BHCSSS	SCREW, BUTTON HEAD CAP 1/4-20 X .625L	5
21	725-484	FILTER	1
22	08628	HOSE CLAMP	1
23	08636	HOSE	2
24	5-450	HOSE, SILICONE COUPLER, 4.5" DIA. X 3.0"	1
25	21590	CABLE TIES; 11" BLACK	2
26	077014	CLAMP, STEEL LOOP, SLEEVED. 3/4" I.D.	2
27	08553	HOSE CLAMP; SPRING BAND 20MM X 12MM	4
28	21684-1	PLUG; 1-3/16"OD, 11/16"ID X 7/16"HT	1