



D5606 Installation Instructions Dodge 2500/3500 w/ 52121938AA Mount Transfer Case Drop Kit

Read and understand all instructions and warnings prior to installation of product and operation of vehicle.

Zone Offroad Products recommends this system be installed by a professional technician. In addition to these instructions, professional knowledge of disassembly/ reassembly procedures and post installation checks must be known. Minimum tool requirements include the following: Assorted metric and standard wrenches, hammer, hydraulic floor jack and a set of jack stands. See the "Special Tools Required" section for additional tools needed to complete this installation properly and safely.

» PRODUCT SAFETY WARNING

Certain Zone Suspension Products are intended to improve off-road performance. Modifying your vehicle for off-road use may result in the vehicle handling differently than a factory equipped vehicle. Extreme care must be used to prevent loss of control or vehicle rollover. Failure to drive your modified vehicle safely may result in serious injury or death. Zone Offroad Products does not recommend the combined use of suspension lifts, body lifts, or other lifting devices.

You should never operate your modified vehicle under the influence of alcohol or drugs. Always drive your modified vehicle at reduced speeds to ensure your ability to control your vehicle under all driving conditions. Always wear your seat belt.

» TECHNICAL SUPPORT

Live Chat provides instant communication with Zone tech support. Anyone can access live chat through a link on www.zoneoffroad.com.

www.zoneoffroad.com may have additional information about this product including the latest instructions, videos, photos, etc.

Send an e-mail to tech@zoneoffroad.com detailing your issue for a quick response.

888.998.ZONE Call to speak directly with Zone tech support.

Difficulty Level

easy (1) 2 3 4 5 difficult

Estimated installation: .5 hours

Special Tools Required

None

» PRE-INSTALLATION NOTES

1. Special literature required: OE Service Manual for model/year of vehicle. Refer to manual for proper disassembly/reassembly procedures of OE and related components.
2. Adhere to recommendations when replacement fasteners, retainers and keepers are called out in the OE manual.
3. Larger rim and tire combinations may increase leverage on suspension, steering, and related components. When selecting combinations larger than OE, consider the additional stress you could be inducing on the OE and related components.
4. Post suspension system vehicles may experience drive line vibrations. Angles may require tuning, slider on shaft may require replacement, shafts may need to be lengthened or trued, and U-joints may need to be replaced.
5. Secure and properly block vehicle prior to installation of Zone Offroad Products. Always wear safety glasses when using power tools.
6. If installation is to be performed without a hoist, Zone Offroad Products recommends rear alterations first.
7. Due to payload options and initial ride height variances, the amount of lift is a base figure. Final ride height dimensions may vary in accordance to original vehicle attitude. Always measure the attitude prior to beginning installation.

rev060313

Kit Contents

Qty	Part
1	Transfer Case Drop Bracket

***Important* Verify you have all of the kit components before beginning installation.**

Pre-installation Notes

1. Some vehicles may require minor modifications to gain adequate slack and/or clearance for exhaust, wiring, linkages, etc to allow for the lower of the transfer case. Carefully check all connections between the powertrain, frame and body to ensure that there is enough slack/clearance. Make modifications/adjustments were necessary.
2. This transfer case drop kit is designed to fit vehicles using the factory transmission mount part number 52121938AA only.

INSTALLATION INSTRUCTIONS

3. Park the vehicle on a clean, flat surface and block the rear wheels for safety.
4. Support the transfer case behind the transmission crossmember with a hydraulic jack.
5. Remove the nuts that attach the transmission mount to the transmission crossmember.
6. Remove the two bolts on each side mounting the transmission crossmember to the frame rails. **Figure 1**

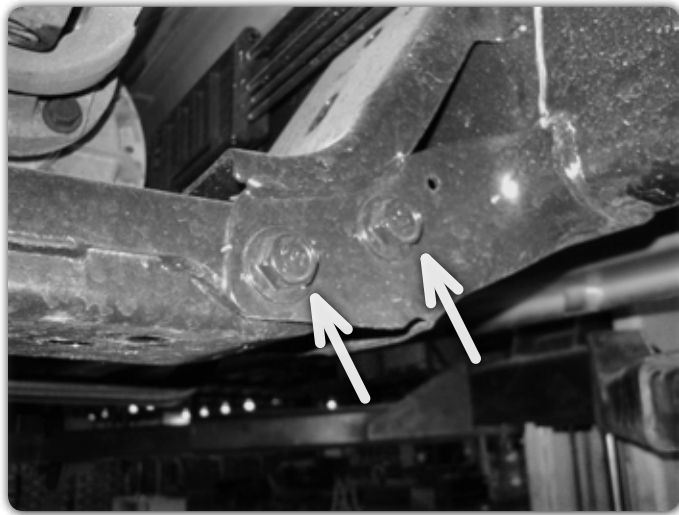


Figure 1

7. Raise the transfer case with the hydraulic jack until the transmission mount studs clear the crossmember. Remove the crossmember from the vehicle by shifting it to one side and pulling the opposite side down to free it from the frame brackets.
8. Remove the two nuts that hold the rubber transmission mount to the steel transmission mount.
9. Remove the four bolts that hold the steel transmission mount to the transmission. Remove the mount from the vehicle.
10. Install the new provided transmission mount with the OE hardware in place of the original that was just removed. Torque hardware to 30 ft-lbs. **Figures 2 & 3**
11. Install the original rubber mount to new mount with the original hardware. Torque hardware to 30 ft-lbs.

12. Reinstall the transmission crossmember with the original hardware. Torque hardware to 90 ft-lbs.



Figure 2



Figure 3

13. Lower the transfer case to engage the transmission mount studs in the transmission crossmember. Fasten the mount to the crossmember with the original nuts. Torque to 45 ft-lbs.
14. Check all hardware for proper torque.
15. Check hardware after 500 miles.