



INSTALLATION INSTRUCTIONS
1999-02 Chevy Silverado 1500LD
2000-06 Chevy Suburban/Tahoe 1500
Part # 45-0180, 40-0185

PART LIST

6	M12*40 Hex Head Bolt, Stainless Steel
12	M12 Flat Washer, Stainless Steel
6	M12 Lock Washer, Stainless Steel
6	M12 Hex Nut, Stainless Steel
4	M12*40 Hex Head Bolt, Yellow Zinc
8	M12 Flat Washer, Yellow Zinc
4	M12 Lock Washer, Yellow Zinc
4	M12 Hex Nut, Yellow Zinc

Note: Westin Automotive advises the installer to use a thread lubricant on all of the stainless steel fasteners.

PROCEDURE

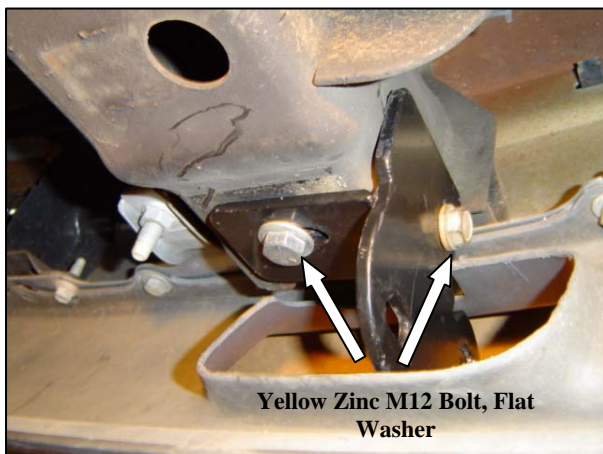
Step 1: Remove contents from box and verify all parts are present. Read Instructions completely before beginning.

Step 2: Remove the factory tow hooks from the vehicle if so equipped. If the vehicle did not come with the factory tow hooks it is necessary cut out the area of the lower valance where the hooks would have been.

Step 3: Locate Left Lower Support Bracket, yellow zinc M12 bolts, flat washers, lock washers, and hex nuts. Loosely attach the Left Lower Support Bracket to frame using the hardware listed in this step (Figure 1). Repeat this procedure on the opposite side of vehicle.

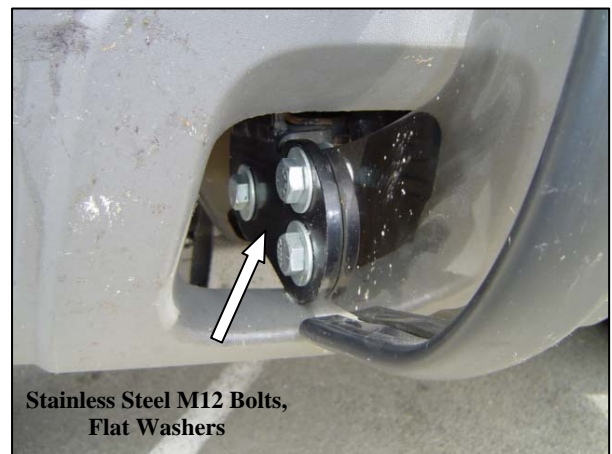
Step 4: Locate the stainless steel M12 hardware and position the Grille Guard to the inside of the Support Brackets. Attach the Guard to the Support Brackets using the hardware listed in this step (Figure 2). Maintain a 3/16" gap between the guard and the vehicle's bumper.

Step 5: After checking for proper clearance and alignment of the Grille Guard on the vehicle fully tighten all hardware.



Yellow Zinc M12 Bolt, Flat Washer

Figure 1



Stainless Steel M12 Bolts, Flat Washers

Figure 2



Westin Automotive Products, Inc.
 5200 N. Irwindale Ave. Suite 220
 Irwindale, Ca. 91706

Thank You for choosing Westin products
 For additional installation assistance please call
 Customer service (800) 793-7846 or (507) 375-3559