



2014+ Chevrolet Corvette

Bottle Mounting Plate

Part # 00-33019

INSTALLATION INSTRUCTIONS

Caution!! This product is secured to the vehicle by a liquid adhesive. In the event of an accident the adhesive bond could break, or the surface that the plate is mounted to could break. At that point the nitrous bottle, bracket and plate could be loose in your vehicle and possibly cause injury or death.

These installation instructions will guide you through the steps necessary to install the nitrous bottle mounting plate in your 2014+ Chevrolet Corvette. This bottle mount is designed to go in the rear hatch area of your vehicle.

Tool Needed For Installation:

- T-40 Torx Bit
- 7mm Socket
- Trim Tool
- Razor Blade

Step 1:

First, open the rear hatch of your vehicle. Use a T-40 Torx to remove the four D-Rings in the hatch. Two of the D-Rings are located on the carpet, and the other two are on the upper inner fender well. In the rear of the trunk there are also two plastic wing nuts that need to be removed. Then, use the trim tool to remove the plastic cover on the passenger side in the hatch. Remove the big panel by going around outer edges with the trim tool and pop the clips out. Next, to take out the carpet you'll need to pop the three clips around the drivers side rear of the hatch. Gently remove the carpet and then take out the hard plastic cover.



Step 2:

Now, bolt your bottle brackets onto the mounting plate in the formation you would like.

Step 3:

Lay the bottle mounting plate inside the rear hatch, and center the plate in the floor. Then, use a marker to trace around the outside of the mounting plate. After you outline the mounting plate, remove it from the hatch.



2014+ Chevrolet Corvette

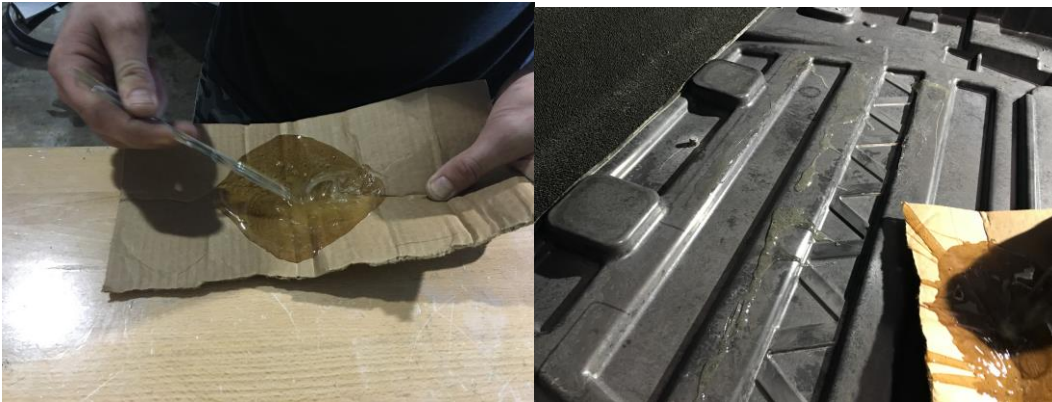
Bottle Mounting Plate

Part # 00-33019

INSTALLATION INSTRUCTIONS

Step 4:

Using a piece of spare cardboard or wood, mix the epoxy that came with your bottle mounting plate according to the directions on the packaging. Once the epoxy is thoroughly mixed, spread it on the raised areas of the floor in the hatch where the bottle mounting plate will be going.



Step 5:

Once the epoxy is evenly spread, carefully place the mounting plate back into the hatch. Push it down firmly into epoxy, then let the mounting plate sit until the epoxy is cured.





2014+ Chevrolet Corvette

Bottle Mounting Plate

Part # 00-33019

INSTALLATION INSTRUCTIONS

Step 6:

Remove the bottle mounting bracket from the plate, and lay the carpet over the exposed studs. Using a razor, cut 'X' shaped holes in the carpet just big enough for each stud to go through. Now, reinstall the interior pieces you had to remove, including the carpet.



Step 7:

Once the interior of the car is replaced, you can mount the bottle bracket to the exposed studs.





2014+ Chevrolet Corvette

Bottle Mounting Plate

Part # 00-33019

INSTALLATION INSTRUCTIONS

Tips From The Pro's

Nitrous Outlet Bottles are designed to be mounted with the valve facing the front of the car, and nipple on the bottle facing down. This is because the siphon tube inside the bottle is angled in a way that it maintains constant contact with the nitrous, even during hard acceleration. Your bottle can be mounted other ways though. For more information be sure and call the Nitrous Outlet Tech Line!

If you have any questions regarding the installation or operation of your Nitrous Outlet Mounting Bracket please call the Nitrous Outlet Tech Support Line at (254) 848-4300 or (866) 648-7637. We are available to answer your questions or concerns Monday-Friday, 8:30am-5:30pm CST.