



2015-2023 Ford Mustang Single Bottle Mounting Plate

PART NUMBER 00-33011

INSTALLATION INSTRUCTIONS

This Nitrous Outlet Vehicle Specific Single Bottle Mounting Plate is designed specifically for the 2019 Ford Mustang GT. If you need any assistance during installation or if you have questions about this plate system, call our Tech Help Line at (254) 848-4300.

Tools Needed for Installation*:

- 1/2" Socket
- Ratchet
- 7/16" Wrench
- 11/16" Wrench
- Adjustable Blade
- 3/8" Drill Bit
- Drill
- Center Punch
- Marker

***These are the tools required for installation of this kit on a stock vehicle. If your vehicle has aftermarket parts, other tools may be required.**



Step 1:

Open the trunk and remove the floor panel.



Step 2:

With the forward trunk panel in place, place bottle mount in trunk with the top of the mount under the rear seat brace and the bottom on top of the flange of the trunk panel. You may need to place the mount slightly toward the passenger side to clear the seam sealer on the floor of the trunk. Mark the 4 holes with a marker. Remove the bottle mount.

IMPORTANT: All appropriate safety equipment (gloves, tools etc.) must be used during the installation of this product(s).

Nitro Dave's LLC accepts NO responsibility for injuries or damages resulting during and/or from the installation of any product(s). All products are intended for off-road use only.

WWW.NITROUSOUTLET.COM/INSTALLATION-GUIDES



2015-2023 Ford Mustang Single Bottle Mounting Plate

PART NUMBER 00-33011

INSTALLATION INSTRUCTIONS



Step 3:

Check under the area you are drilling to ensure it is clear of any electrical or fuel systems components. If it is clear, use a center punch to mark the center of your mark, then a 3/8" drill bit to drill the holes you marked.

IMPORTANT: All appropriate safety equipment (gloves, tools etc.) must be used during the installation of this product(s).

Nitro Dave's LLC accepts NO responsibility for injuries or damages resulting during and/or from the installation of any product(s). All products are intended for off-road use only.

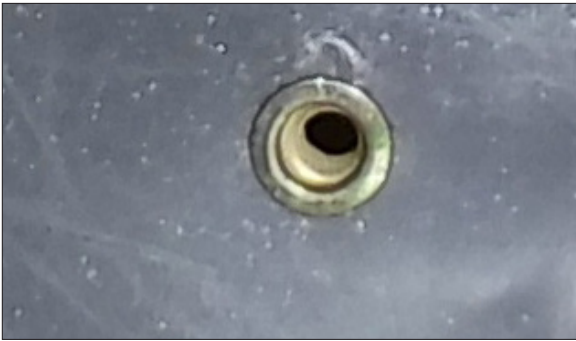
WWW.NITROUSOUTLET.COM/INSTALLATION-GUIDES



2015-2023 Ford Mustang Single Bottle Mounting Plate

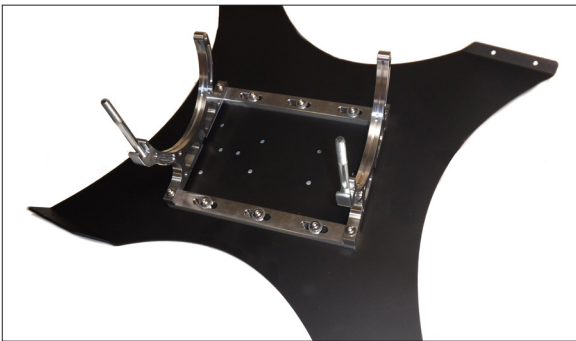
PART NUMBER 00-33011

INSTALLATION INSTRUCTIONS



Step 4:

Install Rivet Nuts in the holes. (See attached notes for information regarding Rivet Nut installation)



Step 5:

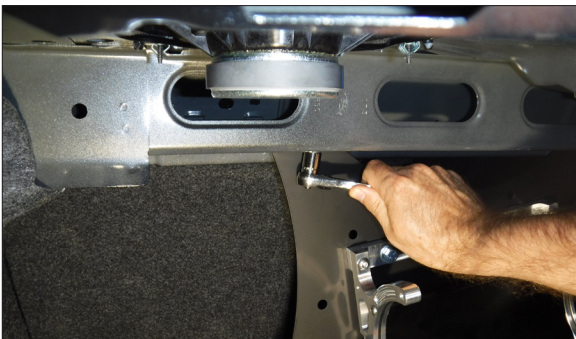
Mount the bottle bracket on the bottle mount in the desired location and tighten the bolts with a 7/16" wrench. Be sure and use washers on both the bolt and the nut.

Shown with optional Billet Heated Bracket P/N 00-32018



Step 6:

Using a 1/2" socket, install the bottle mount with the provided hardware.



IMPORTANT: All appropriate safety equipment (gloves, tools etc.) must be used during the installation of this product(s).

Nitro Dave's LLC accepts NO responsibility for injuries or damages resulting during and/or from the installation of any product(s). All products are intended for off-road use only.

WWW.NITROUSOUTLET.COM/INSTALLATION-GUIDES



2015-2023 Ford Mustang Single Bottle Mounting Plate

PART NUMBER 00-33011

INSTALLATION INSTRUCTIONS



Step 7:

Mount the bottle and tighten the feed line onto it with an 11/16" wrench. See attached notes for information regarding bottle mounting.



Step 8:

Place the floor panel face down on a flat surface. Mark a line 13-1/2" from the forward edge of the floor panel. Using an adjustable blade, score a line through the plastic board, making sure not to cut through the carpet. This will give a hinge point in the floor for access to the spare tire.



Step 9:

Reinstall the floor panel.

IMPORTANT: All appropriate safety equipment (gloves, tools etc.) must be used during the installation of this product(s).

Nitro Dave's LLC accepts NO responsibility for injuries or damages resulting during and/or from the installation of any product(s). All products are intended for off-road use only.

WWW.NITROUSOUTLET.COM/INSTALLATION-GUIDES



Do-It-Yourself RivNut® Installation Instructions

PART NUMBER 03-30008

INSTALLATION INSTRUCTIONS

This document is used for Do-It-Yourself Rivnut® installation instructions. If you need any assistance during installation or if you have questions about this plate system, call our Tech Help Line at (254) 848-4300.

Tools Needed for Installation*:

- 1/2" Wrench
- 7/16" Wrench
- 1/4"-20 Bolt about 1 1/2" long (Does not have to be a socket head)
- 1/4"-20 Nut
- 5/16-18" Nut

*These are the tools required for installation of this kit on a stock vehicle. If your vehicle has aftermarket parts, other tools may be required.



Step 1:

Thread the 1/4-20 nut all the way onto the 1/4-20 bolt. Slide the bigger nut over the 1/4-20 bolt and then thread the Rivnut® onto the 1/4-20 bolt.



Step 2:

Insert Rivnut® assembly into an 11/32" hole



Step 3:

Use both the 7/16" and 1/2" wrench. Hold the 1/2" wrench still and tighten the 1/4-20 nut till it stops.

IMPORTANT: All appropriate safety equipment (gloves, tools etc.) must be used during the installation of this product(s).

Nitro Dave's LLC accepts NO responsibility for injuries or damages resulting during and/or from the installation of any product(s). All products are intended for off-road use only.

WWW.NITROUSOUTLET.COM/INSTALLATION-GUIDES



Do-It-Yourself RivNut® Installation Instructions

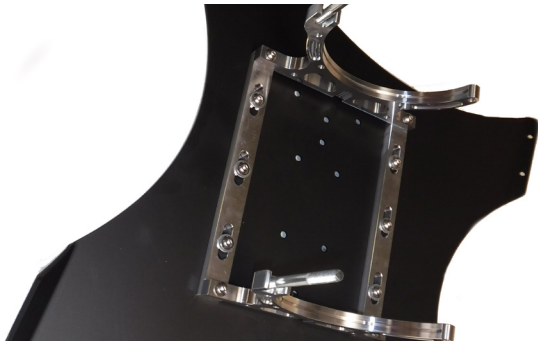
PART NUMBER 03-30008

INSTALLATION INSTRUCTIONS



Step 4:

Unthread the 1/4-20 bolt with the nuts to complete the install.



IMPORTANT: All appropriate safety equipment (gloves, tools etc.) must be used during the installation of this product(s).

Nitro Dave's LLC accepts NO responsibility for injuries or damages resulting during and/or from the installation of any product(s). All products are intended for off-road use only.

WWW.NITROUSOUTLET.COM/INSTALLATION-GUIDES