



# 2011-2014 Ford Mustang X-Brace Bottle Bracket Mounting Plate

PART NUMBER 00-33005

## INSTALLATION INSTRUCTIONS

This Nitrous Outlet vehicle specific single bottle mounting plate is designed specifically for the 2011-2014 Ford Mustang. If you need any assistance during installation or if you have questions about this bottle mounting bracket, call our Tech Help Line at (254) 848-4300.

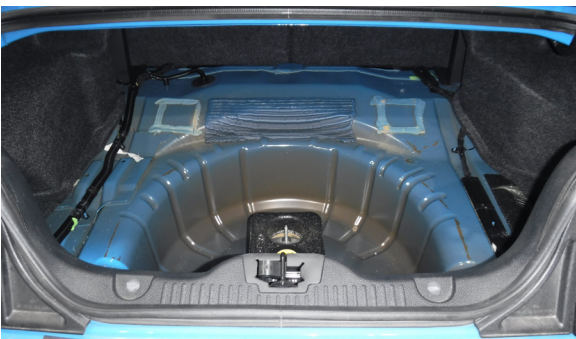
### Tools Needed for Installation\*:

- 5/32" Allen Wrench
- 11/16" Wrench
- Razor Blade
- Drill
- 3/8" Drill Bit
- Marker
- Center Punch

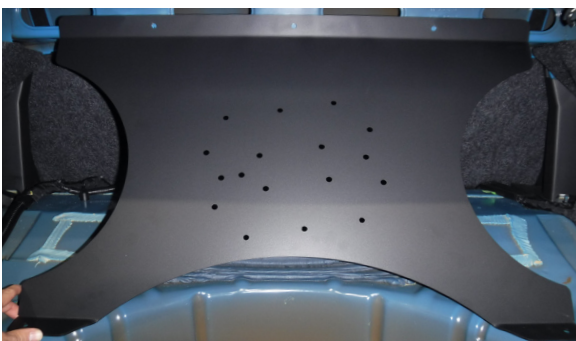
**\*These are the tools required for installation of this kit on a stock vehicle. If your vehicle has aftermarket parts, other tools may be required.**



**Step 1:**  
Open the trunk of your vehicle.



**Step 2:**  
Remove the floor/spare tire cover.



**Step 3:**  
Place bottle mount in trunk with the top of the mount against the rear seat brace and the bottom flanges on a flat surface on the trunk floor.

**IMPORTANT:** All appropriate safety equipment (gloves, tools etc.) must be used during the installation of this product(s).

Nitro Dave's LLC accepts NO responsibility for injuries or damages resulting during and/or from the installation of any product(s). Nitrous oxide is for off-road use only.

[WWW.NITROUSOUTLET.COM/INSTALLATION-GUIDES](http://WWW.NITROUSOUTLET.COM/INSTALLATION-GUIDES)



# 2011-2014 Ford Mustang X-Brace Bottle Bracket Mounting Plate

PART NUMBER 00-33005

## INSTALLATION INSTRUCTIONS



### Step 4:

Mark the 3 top and 2 bottom holes with a marker. Remove the bottle mount.



### Step 5:

Using a center punch, mark the 5 hole locations.



### Step 6:

Check under the area you are drilling to ensure it is clear of any electrical or fuel systems components. If it is clear, use a 3/8" drill bit to drill the holes you marked on the trunk floor and rear seat brace.

**IMPORTANT:** All appropriate safety equipment (gloves, tools etc.) must be used during the installation of this product(s).

Nitro Dave's LLC accepts NO responsibility for injuries or damages resulting during and/or from the installation of any product(s). Nitrous oxide is for off-road use only.

[WWW.NITROUSOUTLET.COM/INSTALLATION-GUIDES](http://WWW.NITROUSOUTLET.COM/INSTALLATION-GUIDES)



# 2011-2014 Ford Mustang X-Brace Bottle Bracket Mounting Plate

PART NUMBER 00-33005

## INSTALLATION INSTRUCTIONS



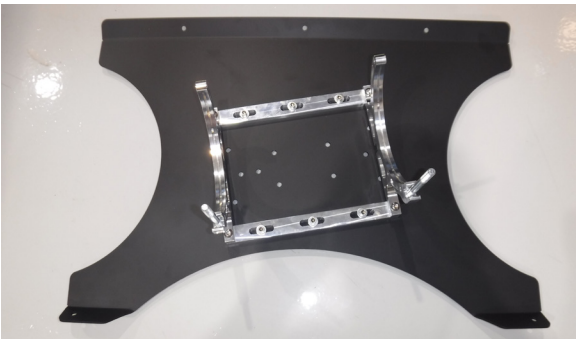
### Step 7:

Install the provided 1/4"-20 Rivet Nuts in the 5 holes.



### Step 8:

Reinstall the floor/spare tire cover.



### Step 9:

Mount your bottle bracket on the bottle mount in the desired location. Be sure and use washers on both the bolt and the nut. Hardware for this is not provided.

\*Shown with optional Billet Bottle Bracket P/N 00-32017\*



### Step 10:

Using the 5/32" Allen Wrench, 1/4-20 x 3/4 bolts and 1/4 flat washers, fasten the bottle mount to the rear seat brace.

**IMPORTANT:** All appropriate safety equipment (gloves, tools etc.) must be used during the installation of this product(s).

Nitro Dave's LLC accepts NO responsibility for injuries or damages resulting during and/or from the installation of any product(s). Nitrous oxide is for off-road use only.

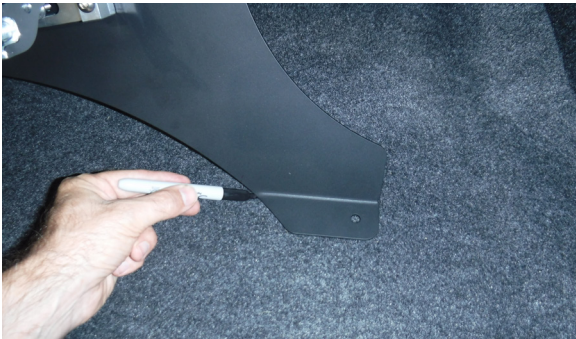
[WWW.NITROUSOUTLET.COM/INSTALLATION-GUIDES](http://WWW.NITROUSOUTLET.COM/INSTALLATION-GUIDES)



# 2011-2014 Ford Mustang X-Brace Bottle Bracket Mounting Plate

PART NUMBER 00-33005

## INSTALLATION INSTRUCTIONS



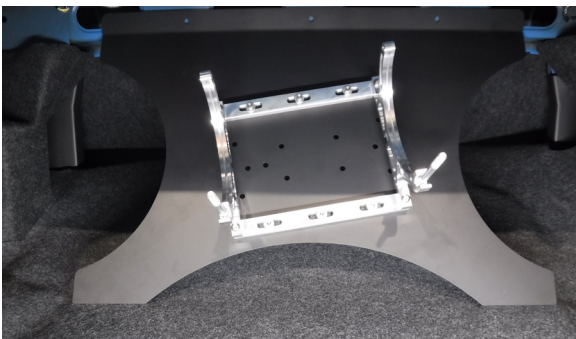
### Step 11:

Mark the floor for slots that the bottle mount will slide through and slide the floor out from under the bottle mount.



### Step 12:

Remove the floor from the trunk. Using a razor blade, cut a slot between the marks in the floor.



### Step 13:

Reinstall the floor/spare tire cover by sliding it under the bottle mount making sure that the bottom tabs of the mount insert in to the slots in the carpet.



### Step 14:

Using the 5/32" Allen Wrench, 1/4-20 x 3/4 bolts and 1/4 flat washers, fasten the bottle mount to the trunk floor, by lifting the spare tire cover to access the bottom mount tabs.

**IMPORTANT:** All appropriate safety equipment (gloves, tools etc.) must be used during the installation of this product(s).

Nitro Dave's LLC accepts NO responsibility for injuries or damages resulting during and/or from the installation of any product(s). Nitrous oxide is for off-road use only.

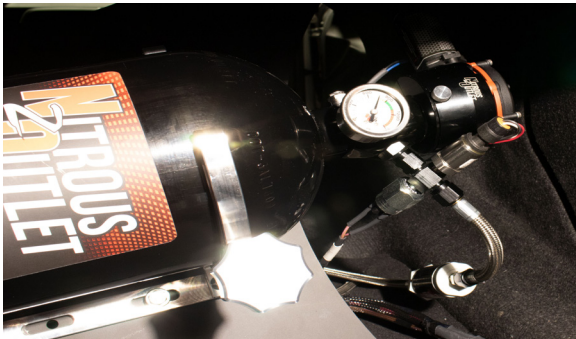
[WWW.NITROUSOUTLET.COM/INSTALLATION-GUIDES](http://WWW.NITROUSOUTLET.COM/INSTALLATION-GUIDES)



# 2011-2014 Ford Mustang X-Brace Bottle Bracket Mounting Plate

PART NUMBER 00-33005

## INSTALLATION INSTRUCTIONS



### Step 15:

Install the bottle and tighten the feed line onto it with an 11/16" wrench.



**Sideways Mounting** - When mounting the bottle sideways, the bottle nipple must be angled around 45° downward, toward the rear of the vehicle. This position will orient the siphon tube at the back side of the bottle where the liquid nitrous will be during acceleration.



### Conclusion

You have finished your installation.

**IMPORTANT:** All appropriate safety equipment (gloves, tools etc.) must be used during the installation of this product(s).

Nitro Dave's LLC accepts NO responsibility for injuries or damages resulting during and/or from the installation of any product(s). Nitrous oxide is for off-road use only.

[WWW.NITROUSOUTLET.COM/INSTALLATION-GUIDES](http://WWW.NITROUSOUTLET.COM/INSTALLATION-GUIDES)



# Do-It-Yourself Riv-Nut Installation Instructions

## INSTALLATION INSTRUCTIONS

This document is used for Do-It-Yourself Riv-Nut installation instructions. If you need any assistance during installation or if you have questions about this plate system, call our Tech Help Line at (254) 848-4300.

### Tools Needed for Installation\*:

- 1/2" Wrench
- 7/16" Wrench
- 1/4"-20 Bolt about 1 1/2" long (Does not have to be a socket head)
- 1/4"-20 Nut
- 5/16-18" Nut

\*These are the tools required for installation of this kit on a stock vehicle. If your vehicle has aftermarket parts, other tools may be required.



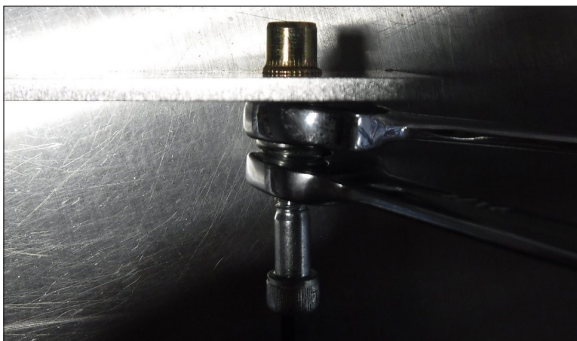
### Step 1:

Thread the 1/4-20 nut all the way onto the 1/4-20 bolt. Slide the bigger nut over the 1/4-20 bolt and then thread the rivnut onto the 1/4-20 bolt.



### Step 2:

Insert rivnut assembly into an 1 1/32" hole



### Step 3:

Use both the 7/16" and 1/2" wrench. Hold the 1/2" wrench still and tighten the 1/4-20 nut till it stops.

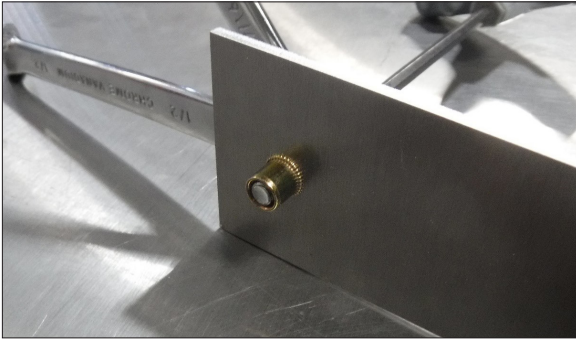
**IMPORTANT:** All appropriate safety equipment (gloves, tools etc.) must be used during the installation of this product(s). Nitro Dave's LLC accepts NO responsibility for injuries resulting in the installation of any product(s). Nitrous oxide is for off-road use only.

[WWW.NITROUSOUTLET.COM/INSTALLATION-GUIDES](http://WWW.NITROUSOUTLET.COM/INSTALLATION-GUIDES)



## Do-It-Yourself Riv-Nut Installation Instructions

### INSTALLATION INSTRUCTIONS



#### Step 4:

Un-thread the 1/4-20 bolt with the nuts to complete the install.



**IMPORTANT:** All appropriate safety equipment (gloves, tools etc.) must be used during the installation of this product(s). Nitro Dave's LLC accepts NO responsibility for injuries resulting in the installation of any product(s). Nitrous oxide is for off-road use only.

[WWW.NITROUSOUTLET.COM/INSTALLATION-GUIDES](http://WWW.NITROUSOUTLET.COM/INSTALLATION-GUIDES)