



Carbon Bottle Adapters for Billet Brackets

PART NUMBER: 00-32025

INSTALLATION INSTRUCTIONS

This Nitrous Outlet Carbon Bottle Adapter is designed specifically for installing a 12lb Composite Bottle in the Nitrous Outlet Billet Bottle Brackets. If you need any assistance during installation or if you have questions about these Bottle Adapters, call our Tech Help Line at (254) 848-4300.

Tools Needed for Installation*:

- 7/16" Deep Socket
- Ratchet
- 5/32" Allen Wrench
- Snips

*These are the tools required for installation of this kit on a stock vehicle. If your vehicle has aftermarket parts, other tools may be required.



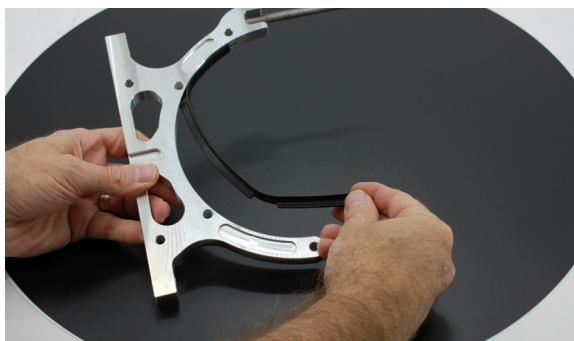
Step 1:

The inserts will be referenced by P3, P4, and P5 as labeled here.



Step 2:

Remove the black plastic edge guard from the inside of each top billet bottle bracket.



Step 3:

Remove the black plastic edge guard from the inside of each bottom billet bottle bracket.

IMPORTANT: All appropriate safety equipment (gloves, tools etc.) must be used during the installation of this product(s).

Nitro Dave's LLC accepts NO responsibility for injuries or damages resulting during and/or from the installation of any product(s). Nitrous oxide is for off-road use only.

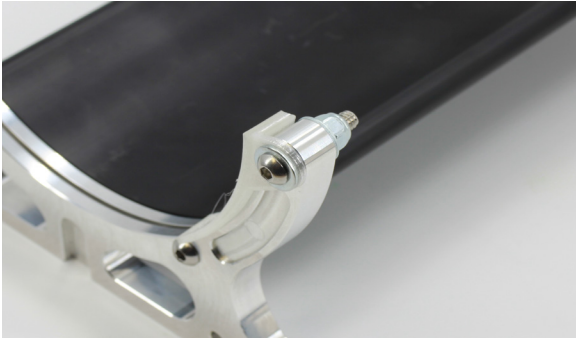
WWW.NITROUSOUTLET.COM/INSTALLATION-GUIDES



Carbon Bottle Adapters for Billet Brackets

PART NUMBER: 00-32025

INSTALLATION INSTRUCTIONS



Step 4:

Place P5 on the open side of the bottom bracket with the long side running down the mount. Using a 5/32" Allen wrench, 7/16" deep socket, and ratchet mount P5 with bolt, washer, and part flange on one side of the bracket and a washer and lock nut on the other.



Step 5:

Place P4 on the clamp side of the bottom bracket with the thickest end pointed up. Using a 5/32" Allen wrench, 7/16" deep socket, and ratchet mount P4 with bolt, washer, and part flange on one side of the bracket and a washer and lock nut on the other.



Step 6:

Place P3 in the top bracket with the narrow insert flange on the open end of the top bracket. Using a 5/32" Allen wrench, 7/16" deep socket, and ratchet mount P3 with bolts, washers, and part flanges on one side of the bracket and washers and lock nuts on the other.



Step 7:

Place your 12lb Composite bottle in the mount. Make sure that it seats flush against the heater extrusion.

IMPORTANT: All appropriate safety equipment (gloves, tools etc.) must be used during the installation of this product(s).

Nitro Dave's LLC accepts NO responsibility for injuries or damages resulting during and/or from the installation of any product(s). Nitrous oxide is for off-road use only.

WWW.NITROUSOUTLET.COM/INSTALLATION-GUIDES



Carbon Bottle Adapters for Billet Brackets

PART NUMBER: 00-32025

INSTALLATION INSTRUCTIONS

The following steps will be used for the Billet Bottle Brackets that do not include the heated cradle. These will need to be done to ensure proper bottle clamping.



Step 8:

Take the piece of edge guard from the bottom bottle bracket and locate the middle tongue section.



Step 9:

Using a sharp set of snips, cut the ends off each piece of edge guard at the end of the middle tongue section.



Step 10:

Reinstall the shortened section of edge guard in the middle of each of the bottom brackets.



Step 11:

Place your 12lb Composite bottle in the mount. Make sure that it seats flush against the bottom edge guard.

IMPORTANT: All appropriate safety equipment (gloves, tools etc.) must be used during the installation of this product(s).

Nitro Dave's LLC accepts NO responsibility for injuries or damages resulting during and/or from the installation of any product(s). Nitrous oxide is for off-road use only.

WWW.NITROUSOUTLET.COM/INSTALLATION-GUIDES