



9400 7TH ST. UNIT C-1
 Rancho Cucamonga, CA 91730
 (909) 476-7225 TECH SUPPORT
 (909) 476-1491 FAX
 www.volantperformance.com

PART NO. 15957

MAKE	MODEL	YEAR	LITER
CADILLAC	ESCALADE	99-MID 01	5.7
CHEVROLET	BLAZER	96-98	5.0/5.7
	SUBURBAN	96-98	5.0/5.7
	TAHOE	96-98	5.0/5.7
GMC	CHEYENNE	96-98	5.0/5.7
	DENALI	96-98	5.0/5.7
	SIERRA	96-98	5.0/5.7
	YUKON	96-98	5.7

ACCESSORIES:

	PART NO.
VOLANT REPLACEMENT FILTER	5123
AIR FILTER CLEANER KIT	5100

INSTALLATION INSTRUCTIONS PART NO. 15957

READ INSTRUCTIONS THOROUGHLY BEFORE DISASSEMBLING. DO NOT SKIP ANY STEPS. ANY QUESTIONS ON A VOLANT KIT MAY BE REFERRED TO OUR TECH SUPPORT LINE AT (909) 476-7225 OR VISIT OUR WEBSITE AT WWW.VOLANTPERFORMANCE.COM

TOOLS NEEDED FOR INSTALL:

- 8 MM OPEN WRENCH
- 5.5 MM OPEN WRENCH
- 9/16 SOCKET AND RATCHET
- 1/2" OPEN WRENCH
- FLAT HEAD SCREWDRIVER

INSTALLATION:

- Disconnect negative battery cable.
- Remove the accordion sleeve that attaches to the air duct located on the throttle body and also on the mass flow sensor.
- Remove wing nut located between the air duct on your throttle body and the box that says Vortec. Pull the Vortec box up and towards you to remove unit completely.
- DO NOT DISCONNECT THE MASS FLOW SENSOR PLUG DURING THIS PROCEDURE.** Loosen the clamp on the left side of the mass flow sensor and pull it away from the elbow. Make sure that the rubber sleeve comes off the sensor before continuing. Carefully set the sensor to the side. (Dropping may damage sensor)
- Pull out the small air temperature sensor located on the top of the elbow nearest the stock filter box.
- Remove the stock filter box by pulling up and away from the fender.

- Return to throttle body and use a 5.5 MM wrench to remove the tallest bolt on the throttle body where wing nut was previously removed. Once removed, separate the two with a 5.5 MM wrench and 8 MM open wrench shown on FIG A. Reinstall bottom half of bolt only.
- Screw 6 MM couplers halfway down on all three studs.
- Place Volant bonnet on the throttle body pointing toward passenger side fender. Insert by hand 6 MM bolts, 1/4" lock washers and 1/4" washers thru rim around the Volant bonnet. **DO NOT OVER TIGHTEN BOLTS.**
- Insert 1/2" X 17" vinyl trim w/sponge around the Volant filter box opening.
- Lower the Volant filter box and line up openings with existing holes in your wheel cover. Place 3/8" bolts and 3/8" washers in the Volant filter box and place the 3/8" washers, lock washers and nuts by hand on other side of filter box. Slide filter box back until it butts up against the fender. Now you can tighten the bolts.
- Slide 3 1/2" X 3" sleeve and hose clamps over the Volant bonnet that is connected to throttle body, but do not tighten clamps.
- Slide Mass flow sensor in other side of 3 1/2" X 3" sleeve. Make sure ARROW on the sensor is pointing TOWARDS the throttle body.
- Slide the 4" X 3 1/2" reducer and clamp over the mass flow sensor, but do not tighten clamps.
- Position Volant ram filter w/clamp in the Volant filter box
- Slide the Volant air duct in the 4" X 3 1/2" reducer and clamp and Volant ram filter located inside the Volant filter box.
- Once the Volant system is positioned, tighten all clamps. **DO NOT OVER TIGHTEN.**
- Cover the Volant air box with the Volant lid. Align the lid openings and fasten all four (4) 1/4"-20 truss head screws with the 1/4" rubber washers. Tighten all four (4) 1/4"-20 truss head screws with a phillips screwdriver.
- Insert small air temperature sensor in the Volant air duct.
- Reconnect the crankcase breather hose to the Volant bonnet.
- Make sure everything is properly connected.
- Reconnect battery cable.
- Place the C.A.R.B. label on or near the Volant system in the engine compartment.

WARNING: OVER TIGHTENING HARDWARE MAY ALTAR THE INTEGRITY OF THE VOLANT AIR INTAKE SYSTEM.

BEFORE ROAD TESTING

- Start engine, leaving the transmission in park and securing the parking brake.
- Make sure to look and listen for any unusual noises or air leaks. Repair problems if needed.
- Once completed it will be necessary to check periodically for realignment and tightening of all connections.
- Once all tests are completed, enjoy the performance of your new Volant Air Intake System.

CARE AND CLEANING

Check the cotton reusable filter periodically and remove any excessive dirt build-up by tapping the filter on the ground and brushing off the loosened dirt. Clean the filter by using Volant's Filter Recharger Kit. Volant's Filter Recharger Kit is designed to restore original air flow. Re-oil every 10,000 miles without cleaning to improve filtering in sand and dirt. Clean only when dirt is very excessive or 50,000 miles.

15957 INSTALLATION

List of component parts (please confirm that you have all parts before starting the installation)

- 1 VOLANT FILTER BOX
- 1 VOLANT FILTER BOX LID
- 1 VOLANT BONNET
- 1 VOLANT AIR DUCT
- 1 RAM FILTER W/CLAMP
- 3 #056 CLAMPS
- 1 #064 CLAMP
- 1 3 1/2" X 3" SLEEVE
- 1 4" X 3 1/2" REDUCER
- 2 3/8" BOLTS
- 4 3/8" WASHERS
- 2 3/8" LOCK WASHERS
- 2 3/8" HEX NUTS
- 3 6 MM-30 BOLTS
- 3 6 MM COUPLERS
- 3 1/4" WASHERS
- 3 1/4" LOCK WASHERS
- 4 1/4"-20 TRUSS HEAD SCREWS
- 4 1/4" RUBBER WASHERS
- 1 1/2" X 17" VINYL TRIM W/SPONGE
- 1 1/2" RUBBER GROMMET

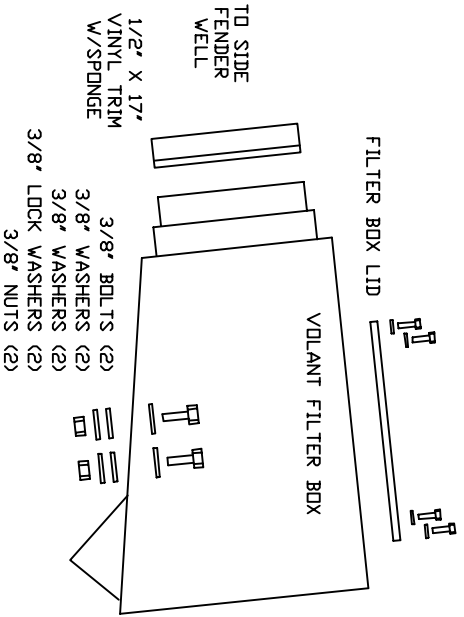


VOLANT AIR INTAKE SYSTEMS
 PART NO.: 15957
 INSTALLATION INSTRUCTIONS
 WWW.VOLANTPERFORMANCE.COM
 TECH SUPPORT: (909) 476-7225

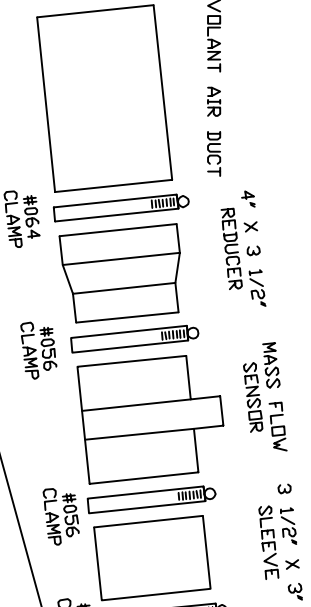


(4) 1/4"-20 TRUSS HEAD SCREWS
 (4) 1/4" RUBBER WASHERS

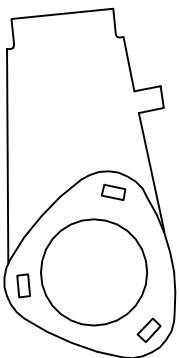
15957 PARTS LIST			
1	FILTER BOX	1	3 1/2" X 3" SLEEVE
1	FILTER BOX LID	1	4" X 3 1/2" REDUCER
1	VOLANT BONNET	4	3/8" BOLTS
1	VOLANT AIR DUCT	2	3/8" LOCK WASHERS
1	RAM FILTER W/CLAMP	2	3/8" HEX NUTS
3	#056 CLAMPS	3	6 MM-30 BOLTS
1	#064 CLAMP	3	6 MM COUPLERS



VOLANT AIR DUCT

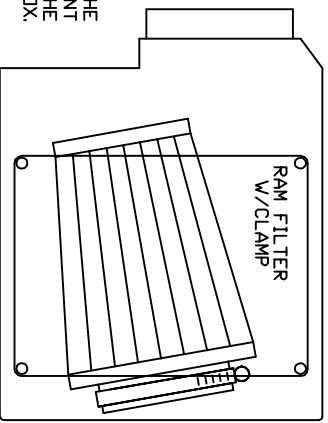


SIDE VIEW OF BONNET



(3) 6 MM BOLTS
 (3) 1/4" LOCK WASHERS
 (3) 1/4" WASHERS

TOP VIEW



NOTE: ATTACH THE FILTER TO THE VOLANT AIR DUCT INSIDE THE FILTER BOX.

1/2" RUBBER GROMMET FOR INSTALL OF AIR FLOW SENSOR

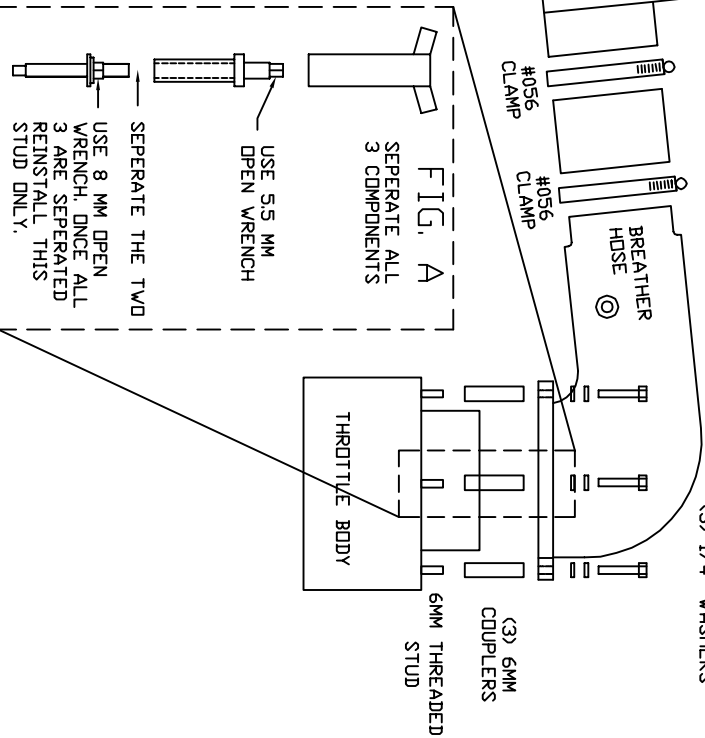


FIG. A

SEPERATE ALL 3 COMPONENTS

USE 5.5 MM OPEN WRENCH

SEPERATE THE TWO

USE 8 MM OPEN WRENCH. ONCE ALL 3 ARE SEPERATED REINSTALL THIS STUD ONLY.