

Steeda Full-Length, Ultra-Lite, and Low-Profile Chassis Jacking Rails Installation Instructions for Part #:555-5212



Tools Needed

1. 3/8th Drive Ratchet
2. 15mm Deep Well Socket

Installation

1. With the vehicle on the ground and the parking brake engaged you may begin the installation.
2. Remove the four factory bolts from the front of the chassis (2 on each side).

Note: It is common for factory cars to have less than four bolts. (Figure 1)

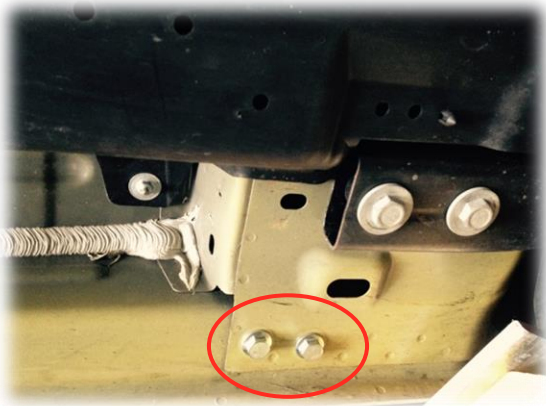


Figure 1: Factory bolts

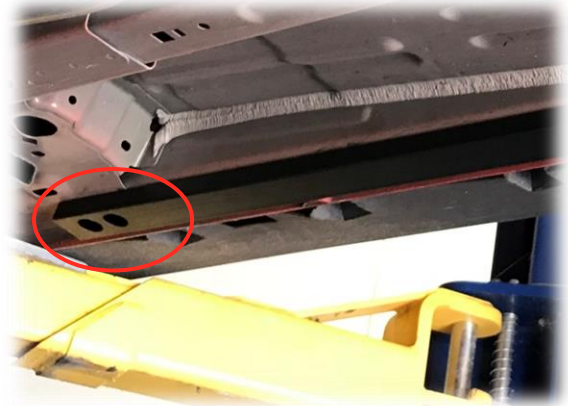


Figure 2: Steeda jacking rail installed

3. Align the Steeda jacking rail so that the 2 closer holes are facing the front of the vehicle as shown in Figure 2.

Note: The passenger side jacking rail is shorter than the driver side jacking rail in total length.

4. Line up the mounting holes with the threaded chassis holes.
Note: Some 2019 models come with an underbelly panel that needs to be modified.
5. Use the supplied hardware to bolt the rails in place, torque to 45ftlbs. Use the provided caps to cover the holes.

Notes:

- Jacking rail powder coat is only design to withstand vehicle jacks with padded rubber jacking plates. Surface damage can be caused using other jacks available on the market.
- Factory seam sealer may need to be removed in order for the rail to seat flush against the pinch weld.

