

**2009-11 MK2 Ford Focus RS Mud Flap Installation Instructions**

View instructions and photos online [www.rallyarmor.com](http://www.rallyarmor.com)

**CARE AFTER INSTALLATION** Once installed, the vehicle owner is responsible for the condition of the mud flaps and all costs associated with replacing damaged or lost parts. Warranty covers manufacturer defect on new, never installed parts.

⚠ Watch for blind spots when parking ⚠ Avoid contact with curbs, bumps and objects that can compress the flaps with excessive force. Be sure to check wheel clearances, especially on vehicles equipped with aftermarket wheels and suspensions.

QUESTION ON INSTALLATION? CONTACT US ONLINE [www.rallyarmor.com/support](http://www.rallyarmor.com/support)

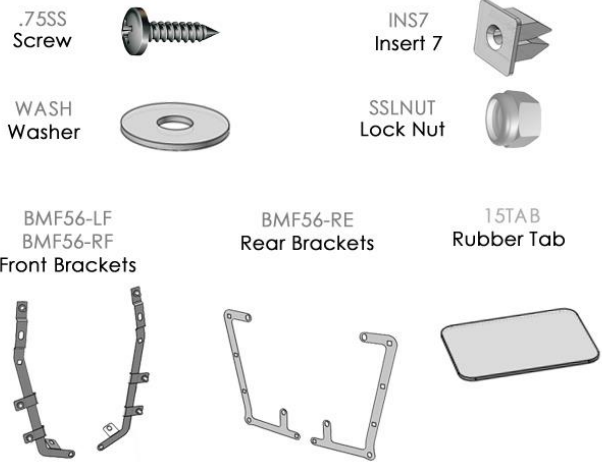
NEED TO PURCHASE REPLACEMENT PARTS? SEND RECEIPT OR PHOTO OF RALLY ARMOR LOGO ON FLAPS TO US [www.rallyarmor.com/support](http://www.rallyarmor.com/support)

**IMPORTANT NOTES**

**INSTALLATION KIT CONTENTS**



QUANTITY	PART	ITEM ID
12	INSERT 7	INS7
20	WASHER	WASH
6	LOCK NUT	SSLNUT
12	SCREW	.75SS
4	RUBBER TAB	15TAB
1	MOUNTING BRACKET LEFT FRONT	BMF56-LF
1	MOUNTING BRACKET RIGHT FRONT	BMF56-RF
2	REAR MOUNTING BRACKET	BMF56-RE



**Recommended Tools** Offset or ratcheting screwdriver

**Important Tips** Installation should be done on an even surface. Do not use power tools to tighten hardware. Hand tools only. Avoid overtightening.

**RALLY ARMOR - A BIT ABOUT OUR STANDARD IN MUD FLAPS**

Rally Armor mud flaps are fabricated from a high grade polyurethane plastic that is rigorously reviewed for quality and consistency. As with all manufacturing processes, controlled conditions and multiple QC checkpoints minimize major irregularities, however certain very minor surface layer marks appear periodically. These are visual variations that do not affect construction nor do they impede the performance of the flaps. Most matte away as the material ages naturally with continued exposure to the outdoors. Each flap is unique in appearance yet all are equally structurally sound.

## 2009-11 MK2 Ford Focus RS Mud Flap Installation Instructions

### FRONT MUD FLAP INSTALLATION

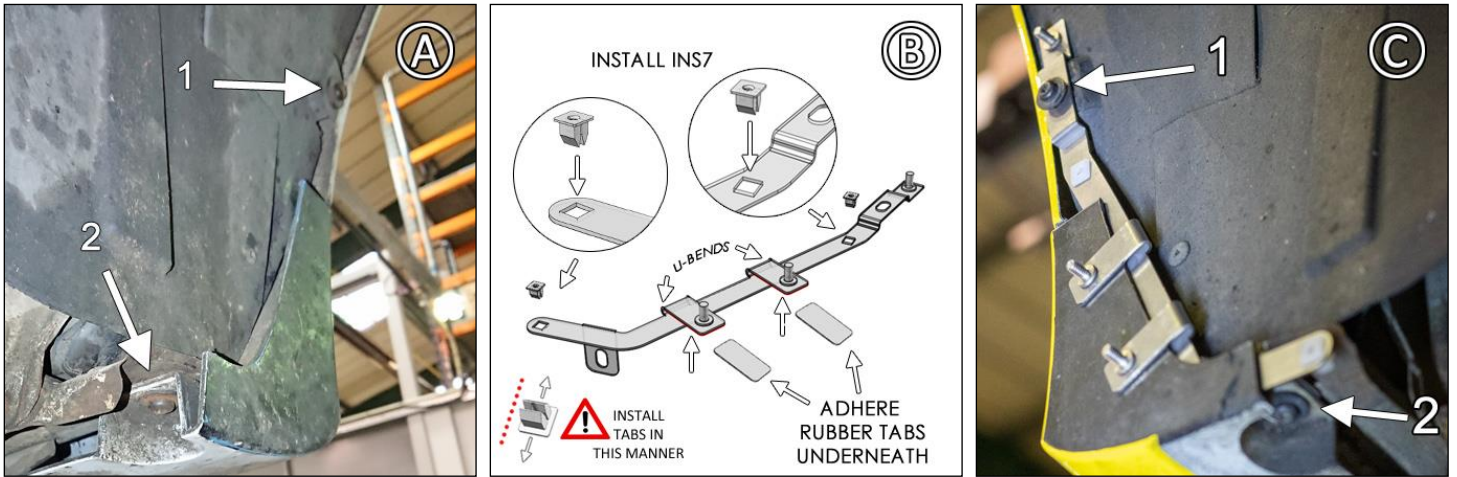
**Bracket & Hardware** 1 x Front Flap → OEM Fasteners; 1 x BMF56-LF/RF BRACKET; 2 x INS7; 2 x 15TAB; 3 x SSLNUT; 5 x WASH; 2 x .75SS

Turn the steering wheel towards the side you are working on to gain access to the inner wheel well area.

**FIGURE A** Remove wheel liner and side skirt Torx fasteners 1, 2. Clean wheel well area.

**FIGURE B** Prep the MOUNTING BRACKET for installation by peeling adhesive backing off RUBBER TAB 15TAB then apply to the underside of both U bends. Install INSERT 7 INS7 into both square mounting points ensuring the lips of the INSERT 7s are horizontal to the vertical BRACKET as shown.

**FIGURE C** Install BRACKET **between side skirt and rocker panel.** Position U bends over side skirt and liner mounting points. Secure it to vehicle with original Torx fasteners into mounting points 1 & 2, tightening only until seated.



**FIGURE D** Position the logo-side of the mud flap towards the vehicle rear, lining it up to the mounting points on the BRACKET and fender. Pair WASHERS WASH with SCREWS .75SS then fasten into installed INSERT 7s. Place WASHERS over the 3 threaded mounting points of the BRACKET then fasten using LOCK NUTS SSLNUT. Tighten only until seated.

**FIGURE E** Align flap outer edge by incrementally adjusting until perpendicular to even ground. Hand-tighten so washers are seated.

**FIGURE F** To create a flush fitment, contour the flap to the fender liner by bending the upper section of the bracket towards the tire.





## 2009-11 MK2 Ford Focus RS Mud Flap Installation Instructions

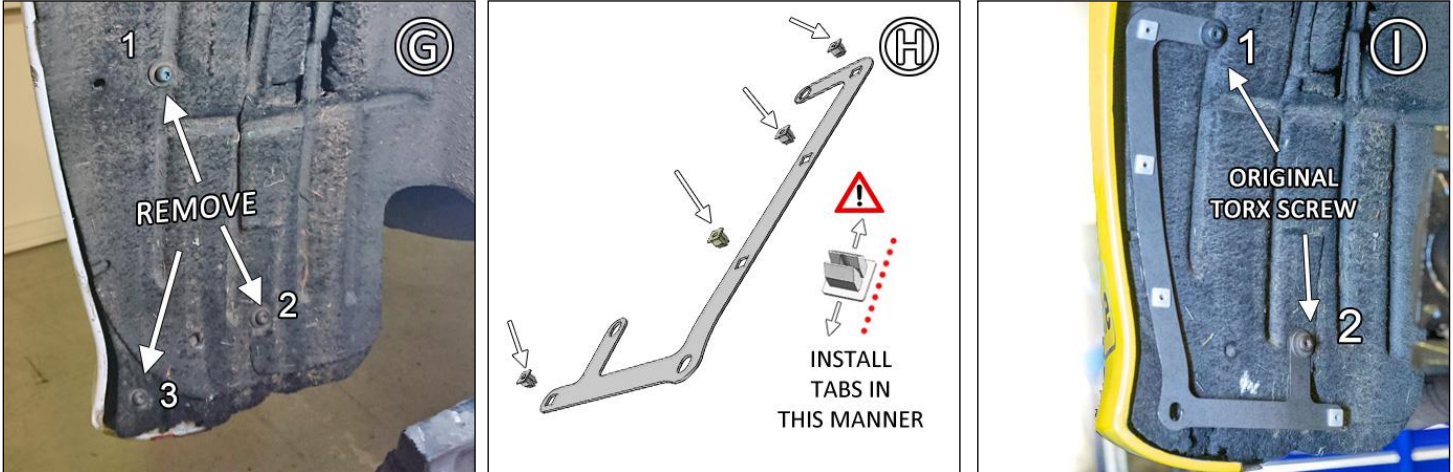
### REAR MUD FLAP INSTALLATION

**Bracket & Hardware** 1 x Rear Flap → OEM Fasteners; 1 x BMF56-RE; 4 x INS7; 5 X Wash; 4 x .75SS;

**FIGURE G** Remove and retain TORX fasteners 1,2 & 3.

**FIGURE H** Place 4 x INSERT 7 INS7 into the square mounts of the REAR BRACKET BMF56-RE with **rear tabs positioned as shown**.

**FIGURE I** Install REAR MOUNTING BRACKET BMF56-RE against wheel liner using original TORX mounting screws into 1 & 2.



**FIGURE J** Position the rear flap against the corresponding INSERT 7 INS7 mounts. Pair WASHERS WASH and SCREWS .75SS then fasten all 4 x INSERT 7 points. Use caution not to overtighten.

**FIGURE K** Reinstall TORX screw with WASHER into mounting point 3.

**FIGURE L** Align flaps by observing the rear then make slight adjustments. Hand-tighten all mounting screws until washers are seated. To create a flush fitment, contour the flap to the fender liner by bending the mid-section of the bracket towards the rear bumper, away from the tire.

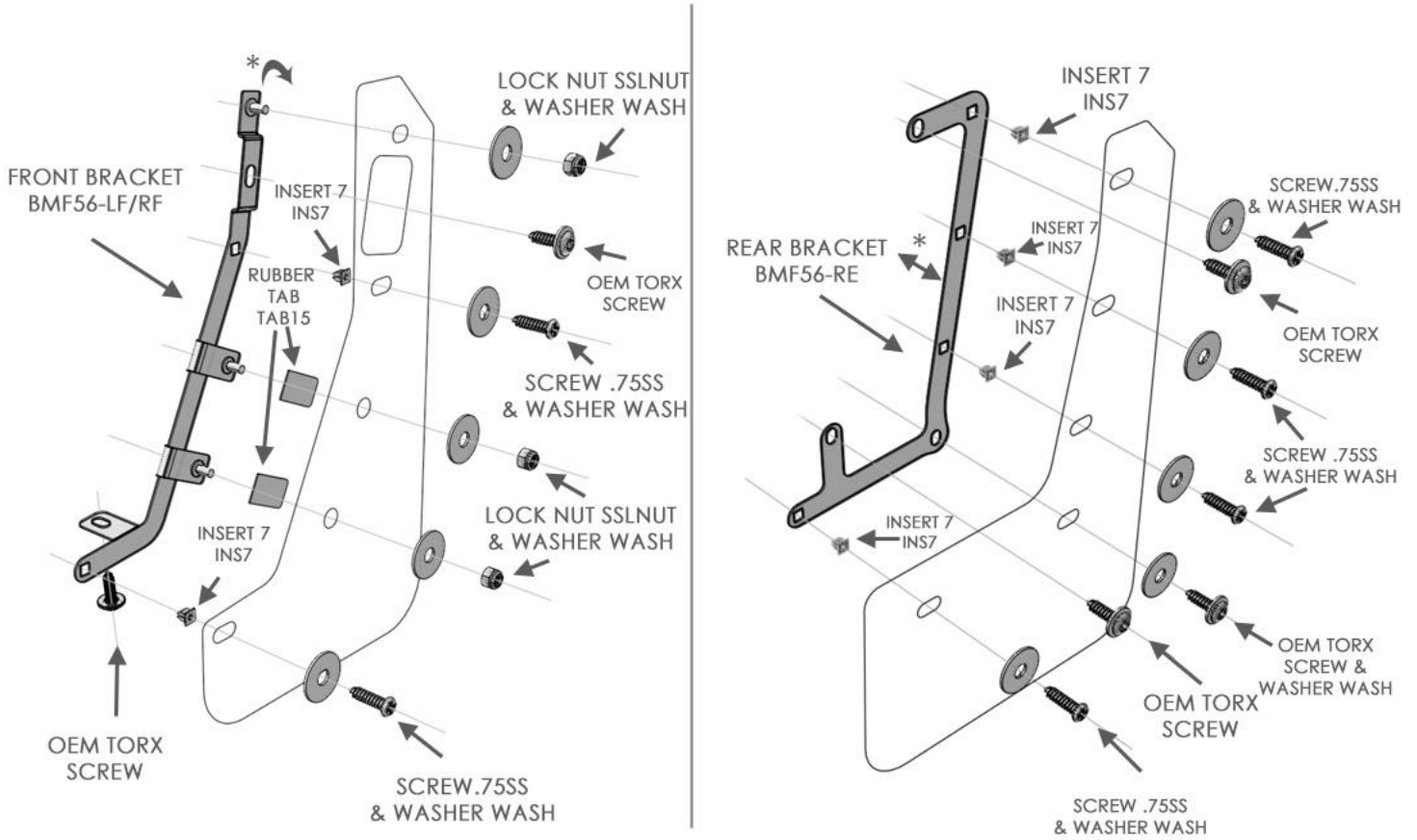


# IMF56



## 2009-11 MK2 Ford Focus RS Mud Flap Installation Instructions

### FRONT REAR MF56 MOUNTING DIAGRAM



\*BRACKETS CAN BE HAND BENT TO NEST FLUSH AGAINST FENDER LINERS

Content and images are copyright of Rally Armor® LLC