



INSTALLATION INSTRUCTIONS

300 W. Pontiac Way Clovis, CA 93612 toll free: 1-800-595-7016 web: www.stsuspensions.com

51105 REAR ANTI-SWAYBAR 91-94 NISSAN SENTRA, NX1600/ 2000

Thank you for being selective enough to choose our high quality SUSPENSION TECHNIQUES PRODUCT. We have spent many hours developing out line of products so that you will receive maximum performance with minimum difficulty during installation.

- Note: Confirm that all of the hardware listed in the parts list is in the kit. **Do not** begin installation if any part is missing. Read the instructions thoroughly before beginning this installation.
- Warning:** **DO NOT** work under a vehicle supported by only a jack. Place support stands securely under the vehicle in the manufacturer's specified locations unless otherwise instructed.
- Warning:** **DO NOT** drive vehicle until all work has been completed and checked. Torque all hardware to values specified.
- Reminder: Proper use of safety equipment and eye/face/hand protection is absolutely necessary when using these tools to perform procedures!
- Note: It is very helpful to have an assistant available during installation.

RECOMMENDED TOOLS:

- Properly rated floor jack, support stands, and wheel chocks
- Combination wrench set
- Ratcheting socket wrench and socket sets
- Safety Glasses

KIT INSTALLATION

1. Open the hardware kit and remove all of the contents. Refer to the part list (Page 3) to verify that all parts are present.
2. Park the vehicle on a smooth, level concrete or seasoned asphalt surface and activate the parking brake. Block the FRONT wheels of the vehicle with appropriate wheel chocks; making sure the vehicle's transmission is in 1st gear (manual) or "Park" (automatic).
3. Using a properly rated floor jack, lift the REAR wheels of the vehicle off the ground. Place support stands, rated for the vehicle's weight, and in the factory specified locations. Refer to the vehicle Owner's Manual. Prior to lowering the vehicle onto the stands, make sure the supports will securely contact the chassis.
4. It is very important that the vehicle is properly supported during this installation to prevent personal injury and chassis damage! Make sure that the supports stands are properly placed prior to performing the following procedures. We **DO NOT RECOMMEND** using wheel ramps while performing this installation.
5. Slowly lower the vehicle onto the stands and, before placing the vehicle's entire weight on them, again check that they properly and securely contact the chassis as described above. Check for possible interference with any lines, wires, cables, or other easily damaged components.

6. Remove the end links from the ends of the original equipment Anti-Sway Bar if so equipped. Remove the Anti-Sway Bar from the vehicle.
7. Remove the bolt; located directly under the bottom of the strut (fig 3), that holds the radius arm to the spindle. Place the bolt through the large hole in the short side of the angle bracket (fig 1). The short side of the angle bracket bolts up to the radius rod (fig 3). The end links will mount to the longer side (fig 3). Assemble the end links onto the Anti-Sway Bar and the angle bracket. Use the longer spacer tubes and bolts if your vehicle is remaining at ride height. The shorter spacer tubes and bolts are for lowered vehicles. Some applications may require the shorter spacer tubes and bolts for clearance regardless of their ride height. **Do not** tighten at this time.
8. Slide the end links and the ends of the Anti-Sway Bar over the lower control arm and under the bottom of the strut. Make sure the Anti-Sway Bar is towards the rear of the bracket on the passenger's side. On the driver's side of the vehicle the Anti-Sway Bar goes to the front of the bracket. Insert the original bolts, attached to the angle bracket, through the radius arm and the spindle and start the nut. **Do not** tighten at this time.
9. Thoroughly lubricate the **inside** of your new hyper thane bushings using a high-grade lithium or silicone-based wheel bearing grease. Suspension Techniques recommends the use of waterproof grease containing molybdenum disulfide.
10. Fasten the center portion of the Anti-Sway Bar to the brackets extending down from the chassis in the factory location. Use the original equipment bolts (on the passenger side) and the Suspension Techniques bushings, brackets, and hardware. You will need to raise each spindle with a floor jack at the same time to mount the bushing brackets to the factory brackets. Tighten the pivot bushings (Fig 3).
11. Tighten the end links until the grommets begin to bulge, but **do not** crush them. Install the wheels and lower the vehicle. Tighten the radius arm to the spindle to 72-87 ft/lbs of torque. Suspension Techniques recommends the use of a thread-locking compound on the nut.
12. Check that all components and fasteners have been properly installed, tightened and torqued.
13. Check brake hoses, steering and other components for any possible interference.
14. Lift vehicle and remove support stands. Carefully lower vehicle to ground.
15. Immediately test-drive the vehicle in a remote location so that you can become accustomed to the revised driving characteristics and handling. Be aware that the vehicle will handle substantially different now that it has been modified.
16. Installation is complete. Check all of the hardware and re-torque at intervals for the first 10, 100, 1000 miles.

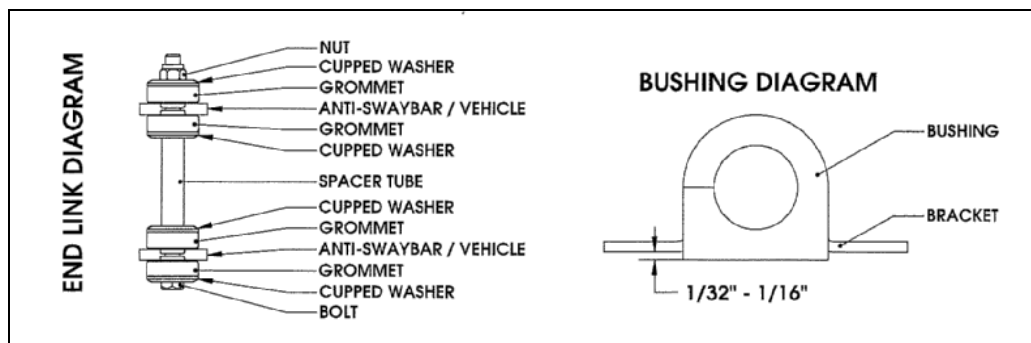
PARTS LIST FOR ANTI-SWAY BAR KIT

PART No.	DESCRIPTION	QTY.
51105-300	REAR ANTI-SWAYBAR	1
113030	PIVOT BUSHINGS 3/4"	2
113000	ENDLINK GROMMETS	8
114030	BUSHING BRACKET	2
51105-005	ENDLINK BRACKET	2
112130	3/8" - 16 x 5-1/2" HHCS	2
112086	3/8" - 16 x 1" HHCS	2
110255	3/8" - 16 NYLOCK NUTS	4
110625	3/8" SAE FLAT WASHER	4
112502	CUPPED WASHERS Large	8
112400	3/8" x 1" SPACER TUBE	2
112408	3/8" x 1-1/2" SPACER TUBE	2
112126	3/8" - 16 x 5" HHCS	2
55000-10	Grease Pack	1

! SUSPENSION TECHNIQUES INSTALLATION TIPS

LUBRICATION

Pre-lubricating the inside of the bushing before it's installed is important because the lubrication will greatly Reduce noise and it will increase bushing life. SUSPENSION TECHNIQUES recommends that you use Molybdenum disulfide. This will help protect the inside surface of the bushing and will last longer than most types of grease. Thoroughly lubricate the inside of the bushing with this grease.



BUSHING INSTALLATION

Make sure an amount of 1/32" to 1/16" of the bushing is showing when you install it onto the bracket. See the diagram above. If the bushing is showing more than 1/16", then use a sander or a sheet of coarse grit sand paper to shave it down to the proper height. In most cases applications when installing the new bushings on your SUSPENSION TECHNIQUES Anti-Sway Bar, you may refer to your original equipment Anti-Sway Bar to locate the proper location

END LINK INSTALLATION

It is not required that you use lubricant on the end links since there is not any rotational movement. The Suspension Techniques end links are comprise of grommets, cupped washers, a spacer tube, bolt, and lock nut, these assembled components create the end link. See END LINK DIAGRAM above.