

ROUGH COUNTRY

SUSPENSION SYSTEMS®



WARNING: This product contains a chemical known to the State of California to cause Cancer and Reproductive Harm. For more information, go to www.P65Warnings.ca.gov.

2022-UP TOYOTA TUNDRA SPORT STYLE FLARES

PRIOR TO INSTALLATION

- A) Install the flares according to these written instructions with the hardware provided. **WARNING:** Failure to install according to these instructions will invalidate the warranty. This includes, but is not limited to, using alternative installation methods, hardware, or materials. **DO NOT USE:** Loctite, Superglue, or similar products on the hardware or the flares. *Install flares on cleaned vehicle surfaces.*
- B) **Fit:** Verify the fit of the flares to vehicle prior to installation (some filing, sanding, or cutting may be necessary to ensure proper fit).
- C) **Painting:** (Optional) if paint is desired it must be done prior to installing flares on vehicle. Clean outer surface with a good grade degreaser. **DO NOT USE LACQUER THINNER OR ENAMEL REDUCER AS A DEGREASER.** Wipe outer surface thoroughly with a tack rag prior to paint. Application of plastic adhesion promoter for ABS plastic as per your paint system manufacturer's recommendations is required. Paint flares using a high-quality enamel, or polyurethane automotive paint. If painting edge trim (not recommended), use a flex additive.
- D) **Performance:** Using larger tires may increase the area required to turn the vehicle. Some tire/rim combinations may require lowering bump stops and or installing steering stops to prevent tire from contacting flare.
- E) **Exhaust System:** Modifications may be necessary to maintain a minimum 4" clearance between flares and exhaust pipes. (Exhaust gases should not vent directly onto flares)
- F) **Metal Protection:** All exposed fasteners and bare metal should be treated with rust resistant paint **BEFORE** installing flares. Spray inner fender wells with undercoating **AFTER** flare attachments have been completed.
- G) **Decals:** Flares may interfere with existing decals on vehicle. If you wish, remove decals prior to installation of flares.
- H) **Care & Cleaning:** Fender flares are built to last; any detergent you use to wash your vehicle is sufficient to clean the flare. Do not use any harsh abrasive detergents.

TOOLS FOR EASY INSTALLATION:

- Soft Cloth or Alcohol Wipe
- Socket Wrench
- 10mm socket
- Grease Pencil
- Philips Screwdriver

PLEASE READ: Dirt and debris can become lodged between the fender flares and the vehicle's fenders, causing scratching and paint wear from vibration. Manufacturer is not responsible for any damage, and the installation of our fender flares is done with the buyer's understanding that this scratching and paint wear may occur.

LIMITED LIFETIME WARRANTY AGAINST ANY MANUFACTURING DEFECTS: To claim warranty you must provide Proof of Purchase.

INCLUDED IN HARDWARE KIT:

1.



#10 "U" Clip
4 pcs

2.



#10 Truss Head
Screw
4 pcs

3.



Wiper Style Edge
Trim
375 inches



IF YOU PURCHASED GLOSSY BLACK FLARES (CODE "RCGB"):



Prior to beginning installation process, peel the protective liner from each plastic piece included in the flare kit – all flares and inner pieces.

NOTE: It will be difficult to remove liner once edge trim and hardware are installed.

Once liner is removed, take care not to scratch flare surfaces. If flare needs to be cleaned, wipe gently with a clean soft cloth.

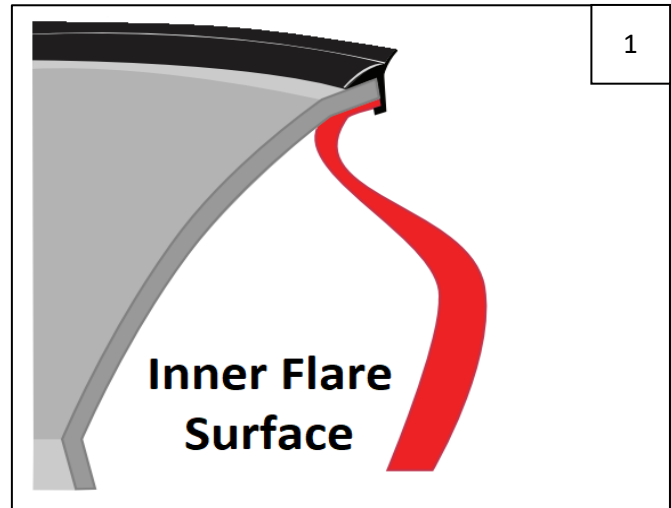


SECTION 1: EDGE TRIM INSTALLATION

Using a debris-free soft cloth or alcohol wipe, clean vehicle at areas of installation.

Peel 2-3 inches of red vinyl backing away from supplied edge trim tape. Applying the adhesive side of the edge trim to the inner side of the flare, affix the edge trim to the top edge of the flare (the portion that comes in contact with the side of the vehicle).

Press edge trim into place along the top edge of the flare in one-foot increments, pulling red vinyl backing free as you continue to work your way around the top edge of the flare. Trim edge trim flush with ends of flare.



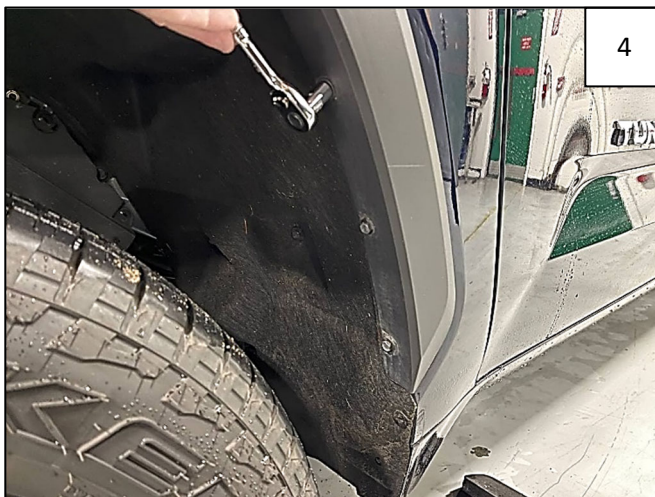
SECTION 3: FRONT FLARE INSTALLATION



Using a 10mm socket, remove 3 factory fasteners from mud guard. Retain all screws for future use. NOTE: Some screws will not be used.



Using a 10mm socket, remove 1 factory fastener from underside of mud guard.



Using a 10mm socket, remove top bolt on rear of rear wheel well as shown.



Using a 10mm socket, remove bottom and top bolt from front of wheel well as shown.



6

Hold flare firmly on fender and mark 2 top holes with a grease pencil.



7

Clip locations.



8

Place a supplied Clip over each mark made in Step 6 (2 places). Make sure hole in clip does not go past edge of fender lip.



9

Hold front flare firmly on vehicle and start 4 factory fasteners in through holes in flare and into factory holes as shown.



10

Using a Philips Screwdriver, start 2 supplied #10 Truss-Head Screws through top 2 holes in flare and into Clips installed in Step 8.



11

Apply pressure to flare towards vehicle body at each fastening point and tighten all fasteners.

SECTION 4: REAR FLARE INSTALLATION



Using a 10mm socket, remove 3 factory fasteners from mud guard. Retain all screws for future use. NOTE: Some screws will not be used.



Using a 10mm socket, remove 1 factory fastener from underside of mud guard.



Remove all 4 bolts from factory wheel well molding.



Hold flare firmly on fender and start factory screws through 5 holes in flare and into holes in fender.



Apply pressure to flare towards vehicle body at each fastening point and tighten all fasteners.