

# INSTALLATION INSTRUCTIONS

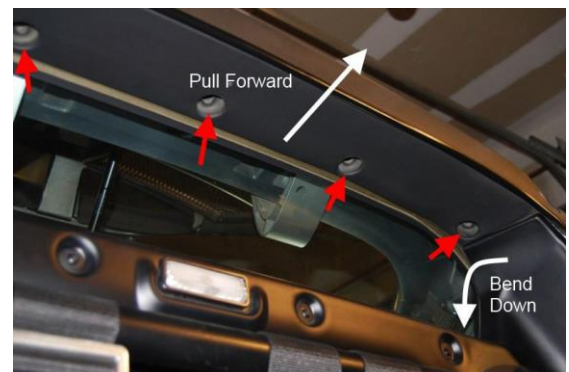
Document# 19-0039

## 2006+ Lotus Exige/Exige-S Rear Clam Shim Kit

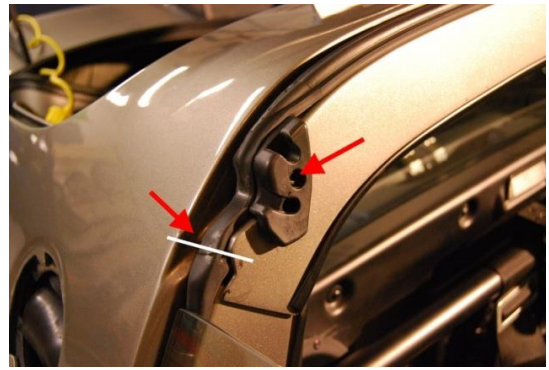


Safely support the vehicle. This is a two-person job. Allow 1 to 2 hours for initial disassembly. Have an area set aside to put the clamshell down when it is removed. Bag and tag everything that is removed. After the conversion is complete, it will take about 20 minutes to remove the rear clamshell.

1. Safely block the front wheels of the car.
2. Jack up the car and safely support it, remove rear wheels.
3. Remove the rear diffuser.
4. Remove side scoops.
5. Remove the plastic fender liners from the rear wheel wells. Save all fasteners.
6. Disconnect and remove the battery from the trunk.
7. Remove all of the carpeting from the trunk.
8. Locate the tail light harness pass-thru behind the battery as well as the alarm connector for the deck lid hinge lock near the center of the trunk on the wall. Unplug both of these harnesses and push towards the pass-thru hole and into the wheel well area.
9. Push the battery cables through the hole and into the wheel area as well. It may be necessary to remove the convoluted split-loom tubing from the cables in order to get them to pass through the hole.
10. Inside the trunk, on the floor, remove the four 10mm head M6 bolts. These will be reused.
11. From under the rear of the car, remove the two bolts holding the muffler heat shield to the rear license plate panel immediately behind the license plate.
12. Disconnect intercooler duct from body (may stay attached to intercooler shroud).
13. Remove the hard top roof.
14. Remove the two front seats from inside the car.
15. Remove the rear speakers. The speaker panel and harness bar (if equipped) may stay in place.
16. Remove the plastic clips from the headliner, shown with the red arrows at right. Then remove the piece. Its foam so you can bend it. You can bend the ends of the main rear panel to get the foam piece out. Once you bend the bottom panel enough you can pull the foam panel forwards and it will slide out. Be careful not to damage the foam part.



17. Shown in picture at right, remove the black plastic roof mounts from the roll bar (above each seat, 1 per side).
18. Cut the window rubber molding with a razor at the location shown in picture at right with white line.
19. Remove the shield from the rear hatch latch mechanism. Get some slack in the wire. Pull it out a little and use a 7mm socket to unscrew the cable-end bolt a few turns. Once it is loose you can slide it off the cable. Then just pull the cable out of the guides. **DO NOT LET TRUNK CLOSE WITH CABLE DISCONNECTED.**
20. From inside the car, reach into the speaker mounting holes and access the back side of the clamshell circled in the picture at right. Remove the 10mm head M6 bolt from this area. One per side. These will not be reinstalled.
21. Disconnect and cap the windshield washer motor outlet tube. Plug the hose. Remove windscreen washer fluid bottle by simply pulling up. It will slide off the bracket.
22. Remove the 6 Allen head bolts on the aluminum fuel filler cover. Remove cover. Peel off the bezel from the back of the clamshell.
23. From inside each wheel well, at the forward side, remove the 10mm head M6 bolts in the rocker panels, 2 per side shown in the picture at right (viewed from engine bay).
24. Position yourself near the rear wheel well. Have a helper stand at the opposite wheel well. Gently lift up on the wheel well lip and lift the clam up off of the car. Check to make sure there are no parts snagged or fasteners that are still installed.
25. Lift the clamshell up and then back. Carry clamshell to a safe spot and gently set down. Ensure each of the four corners that touch the ground sit on pads such as E-Z move furniture sliders to avoid damage.



A. Locate the factory clamshell shims that are taped to the rear chassis structure. Completely remove the tape and the shims at all four locations. These will not be reused.



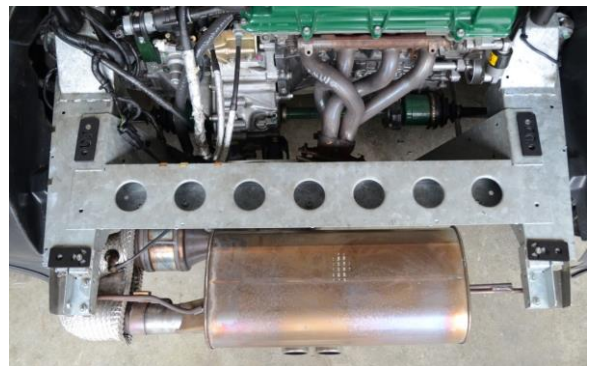
B. Remove the fuel filler bezel and hose from the fuel filler neck. Remove the three Phillips head screws from the back side.



C. Separate the bezel into two pieces. Using the smaller piece with the 6 threaded holes, reinstall the fuel filler aluminum cover back on to the rear clamshell. The large piece with the hose attached will not be reused.



D. Locate the four black aluminum shim plates in the kit. Lay them out in the locations of the previous taped-on factory shims.



E. Line up the larger hole in the shims with the threaded holes in frame. Make a mark on the frame at the smaller countersink shim holes with pen. Repeat this process at all four locations.



F. Use a 1/4" drill bit and drill holes at the locations marked with the pen.



G. Insert one of the included flat-head Allen bolts through the shim and into the hole drilled in the previous step. Ensure that the large hole in the shim lines up with the threaded hole in the frame.



H. Reach your hand, or use a long wrench or two wrenches taped together, into the frame rail and install one of the included lock nuts to the bolt inserted in the previous step. Tighten the bolt. This should now be done at all four locations. It may be necessary to lower the exhaust to access the LH side frame rail opening.



The clamshell is now ready to be put back on the car. Open the two doors to avoid scratching the paint. When placing the clamshell back on, make sure it does not sit on the tail light harness and battery cables. Have these ready to feed through the access holes and into the trunk as the clam is getting positioned in place. Gently lower the clam over the rear of the car being careful not to get it hung up on anything. Pay close attention to the lip of the clamshell that passes in front of the roll bar and do not let it get caught on the body.

Once the clamshell is sitting back in place perform the following to complete the installation:

1. Feed tail light harness and battery cables through access holes and into trunk. The battery cables go through the inboard hole, the tail light harness goes through the outboard hole.
2. Install the four bolts with washers into the trunk floor. Do not tighten at this time.
3. Install the roof mounts.
4. Install the side bolts in the front of the wheel well. To save steps and time, only install the rear-most bolt in each side.
5. Install the fender liners (see Additional Tips for details about trimming liners)
6. Install side scoops.
7. Install the rear diffuser (this remains on the car when clamshell is removed)
8. Install the battery and connect battery cables. Pay close attention to the battery terminal polarity.
9. Connect tail light harness in trunk.
10. Install foam headliner cover and its mounting clips. (This may also be left off the car if desired)
11. Install roof.
12. Hook up intercooler ducting.
13. Install wheels and drop the car back on ground. Don't forget to torque the wheels.
14. Hook up the trunk latch cable.

With all of the modifications in place, and car back to its fully assembled state. Follow this procedure for removing the clamshell:

1. Disconnect intercooler duct and remove the roof. Remove the roof mounts at the roll bar.
2. Remove battery and push cables through the pass-through hole.
3. Disconnect the tail light and deck lid alarm harness and push it through the pass through hole.
4. Remove the diffuser bolts along the back edge of the diffuser (11 in total).
5. Remove all four 10mm hex head bolts in trunk floor.
6. Remove plastic fasteners that hold the rear of the fender liners to the clamshell. Note: fender liners will stay on car when clam is removed.
7. Remove the side bolts at the front of each wheel well, 1 on each side.
8. Remove washer fluid bottle from bracket
9. Unbolt upper-most fastener from each side scoop.
10. Disconnect intercooler duct and hatch release cable.

Perform these steps in reverse to reinstall the clamshell.

## Additional tips to speed removal time

-Use a compact battery and relocate it to behind passenger seat (as shown), or to the frame rail near fuel filler pipe.

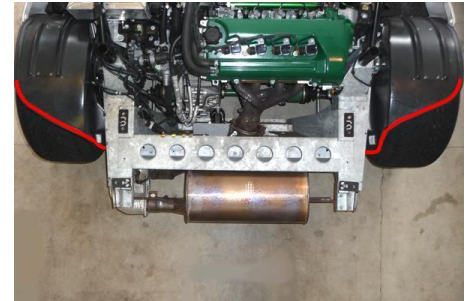


-Use fewer fasteners to hold the rear diffuser to the rear panel.

-Install quarter-turn fasteners in place of the M5 bolts holding the rear diffuser to the rear panel.

-Use less plastic push rivets in fender liners where they connect to the clamshell.

-Trim rear 1/3 section off of fender liners so that they no longer fastens to the rear clamshell.



-Enlarge tail light harness and battery cable access holes to allow the wires to pass through easier.

-Relocate or remove windscreen washer fluid bottle.



For Questions, Contact Radium Engineering at: [info@radiumauto.com](mailto:info@radiumauto.com)