



INSTALLATION INSTRUCTIONS

Universal Dual and Single Oil Catch Cans

SUPPORT: info@radiumauto.com

DOCUMENT: 19-0014

1. Find a suitable mounting location away from hot or moving engine parts. Keep the can(s) mounted vertically to allow oil to collect in the bottom section. A custom mounting bracket may need to be made to interface with the bracket on the catch can(s).

Reference the last page for bracket hole-pattern and dimensions.

Apply a thread locker (such as blue Loctite) to the included M5x.8mm screws and torque to 68 in-lbs.



2. The next step is to plumb the catch cans. A variety of adapter fittings are available from www.radiumauto.com. The ports are threaded for 10AN ORB fittings (7/8"-14 thread). Before installing the adapter fittings, make sure the O-rings are lubricated with engine oil.

Either port can be the inlet or outlet. Flow direction is not critical. If you have a choice, the top port would be the preferred inlet.

Always use fuel/oil compatible hose such as low-pressure fuel hose or PCV hose. Hose size (inside diameter) should match what your factory hoses are.



3. Using the oil dipstick, check the fluid level occasionally. If any oil registers, properly dispose by either unscrewing the bottom plug or unscrewing the bottom half of the cans. If the vehicle is regularly tracked, the dipstick should be checked more frequently. A 10mm deep socket can be used to remove the dip stick if it is tight.

The condensing media should also be inspected regularly for excessive debris which can cause a restriction in the crankcase ventilation system. The stainless steel media will not corrode and can easily be removed and cleaned with a degreaser spray.



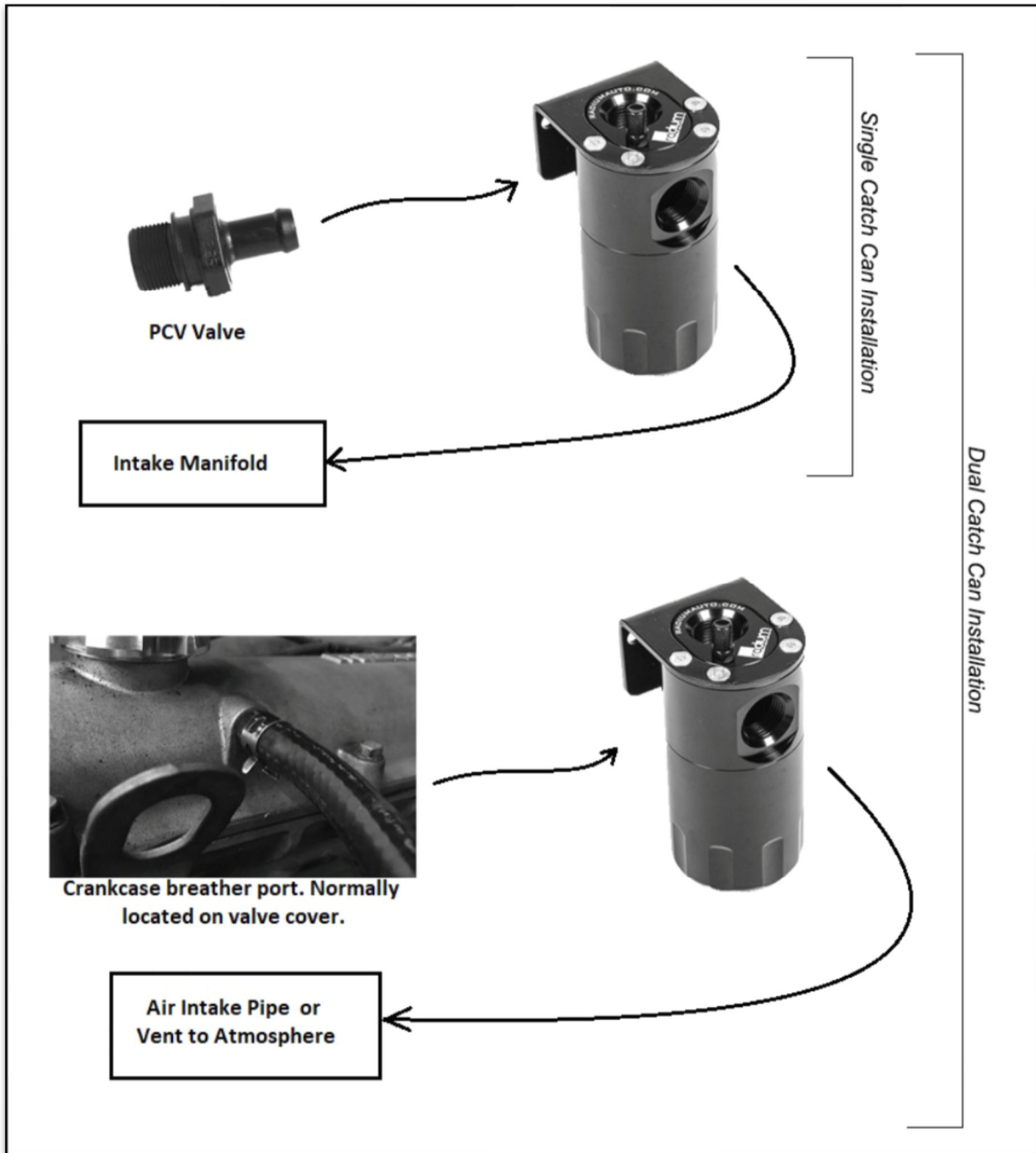
Optional Petcock Drain Kit Only (sold separately):

4. Replace bottom plug with included barb fitting and remotely mount the petcock valve(s). **KEEP TUBING AWAY FROM HOT PARTS!**

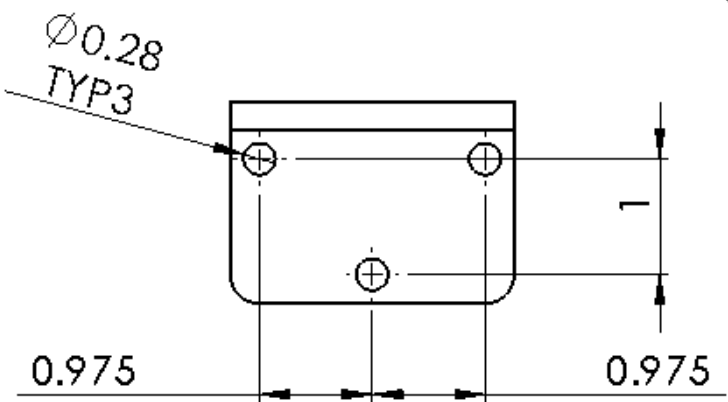
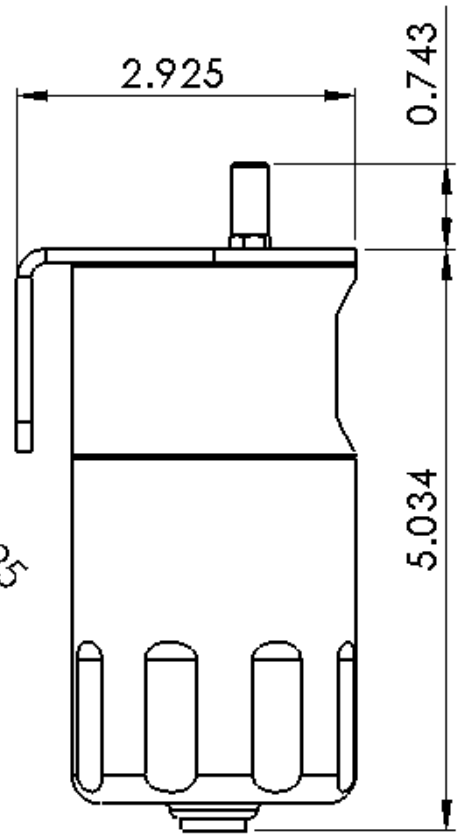
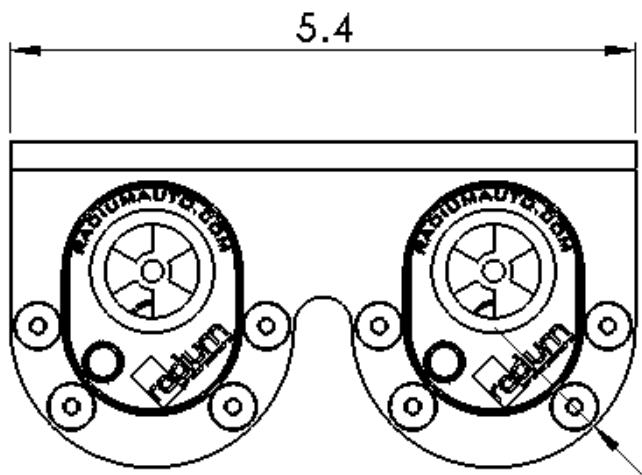
Dual Catch Can Only: Depending on the PCV system, there may be a dynamic pressure difference in each can. In this case, there should be one valve for every catch can, independently. However, the barbed outlet on the ball valves can be connected together using a 1/4" TEE (not supplied) and the internal fluid can be dumped using one tube for simplicity.



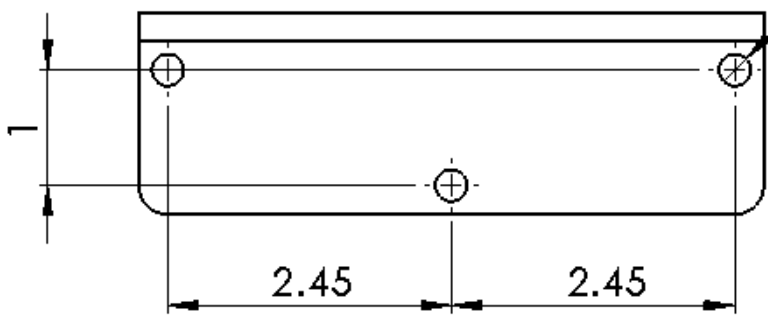
BASIC PLUMBING EXAMPLES:



Continued on next page.



R1.225
TYP



$\varnothing 0.28$
TYP3

