

# INSTALLATION INSTRUCTION



84100

Rev A

## FOR RANCHO RS64100 Jeep JK High Clearance Steering Stabilizer Bracket Kit

*READ ALL INSTRUCTIONS THOROUGHLY FROM START TO FINISH BEFORE BEGINNING INSTALLATION*

### RS97356 PARTS LIST

<u>PART No.</u>	<u>DESCRIPTION</u>	<u>QTY.</u>
RS176656	Axle Bracket	1
	3/8-24 x 1 Bolt	1
	3/8-24 Lock Nut	1
	3/8 Flat Washer	2
P00932	Parts Package	1
	Mounting Stud	1
	1/2-20 Nut	1
	7/16-20 Nut	1
	5/8 I.D Flat Washer	1
	1/2 Lock Washer	1
	7/16 Flat Washer	1
	7/16 Lock Washer	1
RS176511B	Tie Rod Bracket	1
RS74181	U-Bolt 5/16-18	2
	5/16-18 LockNut	4
	5/16 Washer	4
	M12-1.75 x 65 Bolt	1
	M12-1.75 Stover Nut	1
	M12 Washer	2
RS84100	Instruction	1

**NOTE:** The installation of this kit requires a Rancho RS5401 or RS7401MT steering stabilizer (not included). The vehicle will also need at least 2" tall front bump stop spacers (not included). This prevents the steering stabilizer from hitting the bottom of the frame at full jounce travel.

1. Park the vehicle on a level surface and set the parking brake. Place the wheels in a straight forward position.
2. Remove the OE steering stabilizer nut from the tie rod bracket. Remove the nut and bolt from the axle bracket. Remove the steering stabilizer. Remove the OE bracket from the tie rod.
3. Remove the axle end track bar bolt/nut. Note: it may be necessary to support the axle with adjustable jack stands or a floor jack to relieve tension on the bolt for removal.
4. Position axle bracket (RS176656) on the front face of the OEM track bar bracket. Loosely attach the axle bracket using the OEM track bar bolt/nut and supplied 3/8-24 x 1,

nut and washers (see illustration 1). Torque OEM track bar bolt/nut to 120 ft-lbs and 3/8 bolt/nut to 30 ft-lbs.

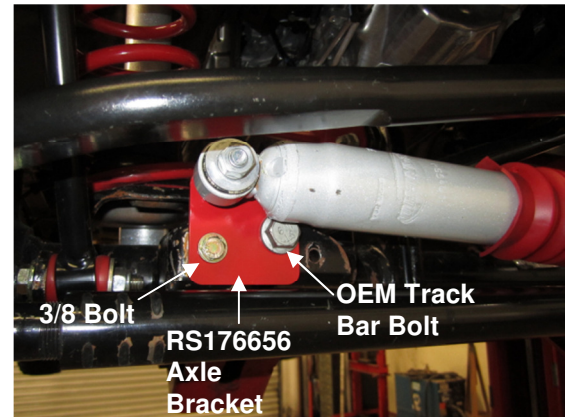


Illustration 1

5. Install supplied mounting stud through the top hole on the axle bracket using hardware from parts package P00932 (see illustration 2).

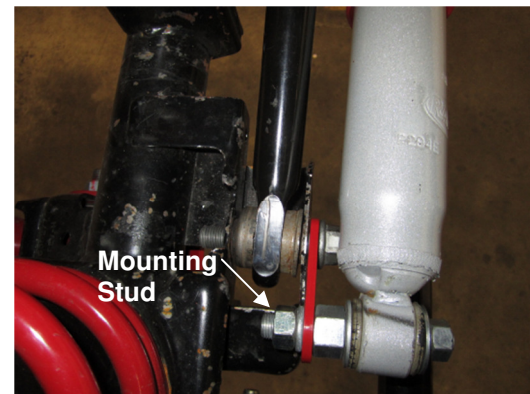


Illustration 2

6. Loosely attach the bottom end of the stabilizer shock to the axle bracket with supplied nut (see illustration 2).
7. Push supplied mounting sleeve through the stabilizer rod end bushing (see illustration 3).

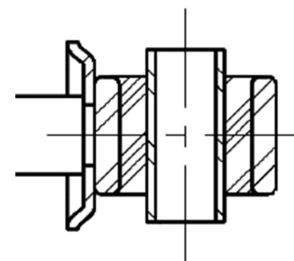


Illustration 3

8. Install dust boot included with the stabilizer, but don't tighten the zip tie until clearance is checked at the very end.

9. Attach tie rod bracket RS176511B to the new stabilizer shock with enclosed 12mm hardware (see illustration 4).

10. Extend new stabilizer shock halfway.

11. Attach tie rod bracket 176511B to the top of the tie rod tube. For a 2007-2010 MY JK you will use the OE U-

bolts. Use the supplied U-bolts for a 2011 and newer JK. Angle bracket slightly forward.

12. Tighten all nuts and bolts securely.

13. Turn wheels completely in both directions. Verify that the steering stops make contact and the stabilizer shock does not bottom out or over extend. Verify that the stabilizer shock does not bind or interfere with other components.

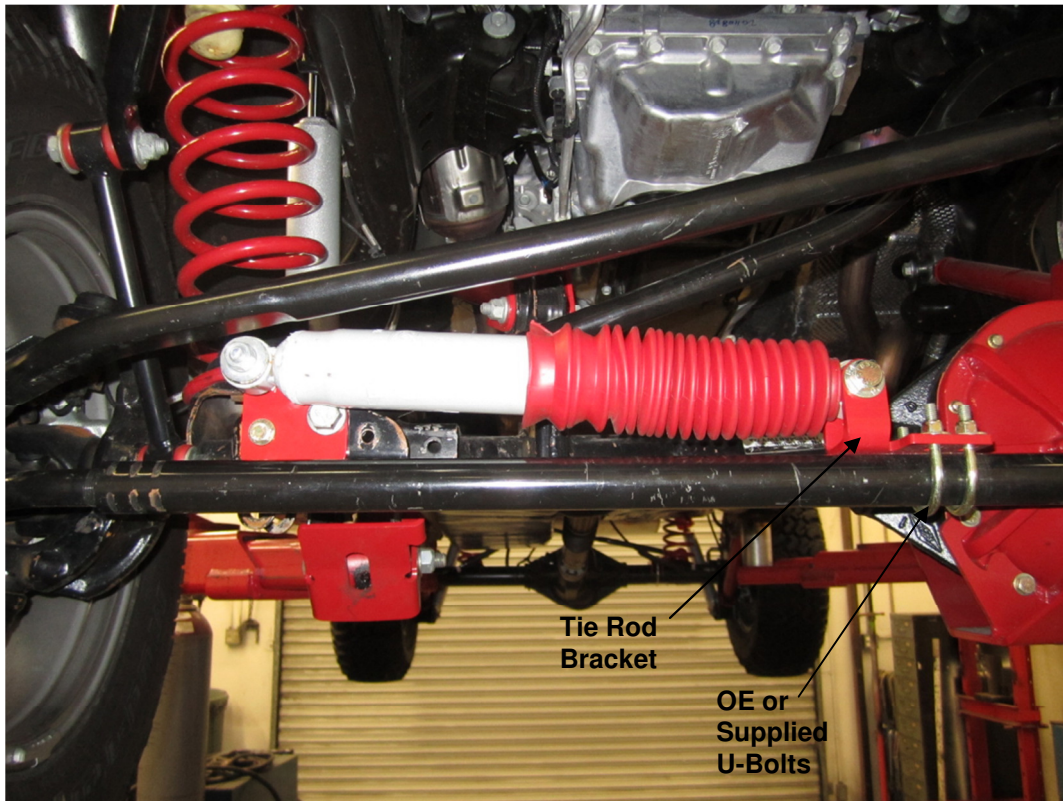


Illustration 4