

2014+ Chevy Silverado LD Light Bar Bumper Bracket Installation Instructions

Congratulations on your purchase of a high quality PUTCO product. Should you need any application or technical assistance, feel free to call us at: 1-800-357-9261
Monday-Friday 8:00 a.m. - 5:00 p.m. (Central Standard Time)

Contact your PUTCO dealer for other quality accessories.

Please read all instructions before installation and to check to see that all parts are included.

KIT CONTENTS:	
Description	Qty.
Bumper Light Bar Bracket	1
3/8"-16 x 2" Bolt	2
3/8" Washer	2
3/8"-16 Clip-on Nut	2

Tools Needed:

- 7/16" Wrench
- 7/32" Hex Wrench
- 1/2 " Drill Bit
- Drill

Light Bar Bracket Installation

1. Remove light bar bracket from packaging. Check to see if all parts from above table are included.



2. Cutout and tape paper template on front bumper. Line front of template up with top lip of bumper.

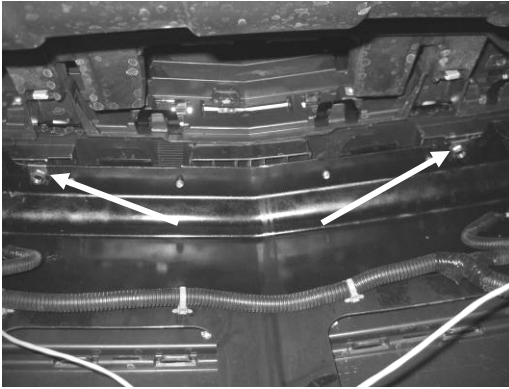


3. Lay bracket on bumper and line up hole on template with holes on bracket. Verify that bracket is straight on bumper. Once straight, drill two 1/2" holes (just through plastic) in locations marked on template.

LIMITED 90 DAY WARRANTY

Putco guarantees its Stainless Steel and Aluminum products against defects in workmanship and material for as long as you own your vehicle. All painted products have a 90 day warranty on the painted surface. Any defects resulting from faulty material or workmanship will be warranted by Putco and repaired or replaced at our discretion. Putco assumes no extra labor costs. Damages caused by freight carriers, improper installation, misuse, collision, or neglect will not be warranted by Putco.

02/17/2014



4. Go to back side of bumper. Place two clip-on nuts in holes on steel bumper (Nut facing down in locations shown above).



5. Install bracket with 3/8" bolts and washers. Tighten down with 7/32" hex wrench. Recommend using thread locking compound.



6. Place 40" curved light bar onto bracket; reinstall hardware as shown in **(Figure 1 of Light Installation Instructions)**. Tighten nut with 7/16" wrench. Route wiring through grill.

For light bar wiring instruction refer to Light Bar Installation Instructions

LIMITED 90 DAY WARRANTY

Putco guarantees its Stainless Steel and Aluminum products against defects in workmanship and material for as long as you own your vehicle. All painted products have a 90 day warranty on the painted surface. Any defects resulting from faulty material or workmanship will be warranted by Putco and repaired or replaced at our discretion. Putco assumes no extra labor costs. Damages caused by freight carriers, improper installation, misuse, collision, or neglect will not be warranted by Putco.

02/17/2014