



Genuine Parts

PRECAUTIONS:

- ❑ Read ALL instructions before installing instrument.
- ❑ Follow ALL safety precautions when working on vehicle-wear safety glasses!
- ❑ ALWAYS disconnect (-) negative battery cable before making electrical connections.

HELP?:

- ❑ If after reading these instructions you don't fully understand how to install your instrument(s), contact your local Stewart Warner distributor, or contact our Technical Support Team toll free at **1-800-676-1837**
- ❑ Additional applications information may be found at www.stewartwarner.com.

GENERAL APPLICATION:

- ❑ 12-volt DC negative (-) ground electrical systems (11-16 VDC for the Light bulb).

Installation Instructions

Mechanical Gauges 2-1/16" and 2-5/8"

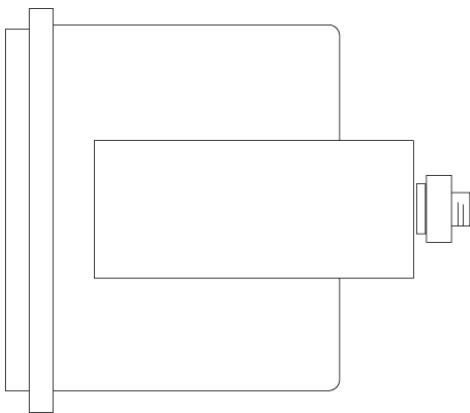
1

2

GAUGE MOUNTING (Figure 1):

- ❑ Recommended panel cut-out (hole size) for 2-1/16" instruments is 2-1/16" and 2-5/8" instruments is 2-5/8".
- ❑ Secure the gauge in the hole using the supplied bracket and nuts.

Figure 1

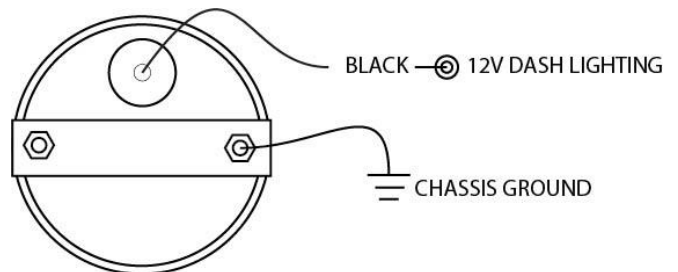


3

LIGHTING WIRING (Figure 2):

1. Disconnect negative (-) battery cable.
2. Connect the light wire to the dash lighting circuit or to a +12V switched circuit.
3. Connect either of the gauge mounting studs to chassis ground.
4. Double check all connections then reconnect the negative (-) battery cable & test instrument lighting to ensure that it is working.

Figure 2



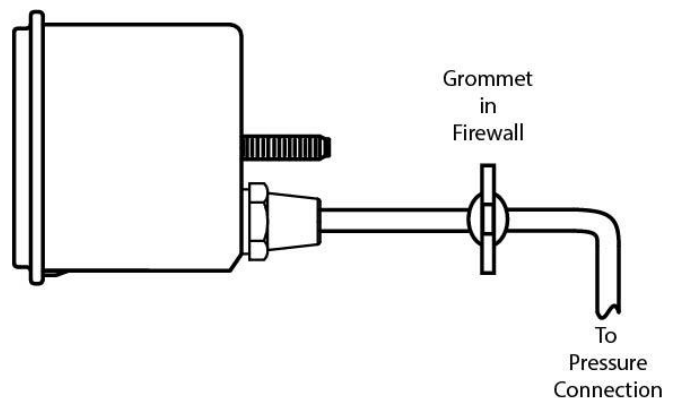
4

MECHANICAL PRESSURE GAUGE INSTALL (Figure 3):

There are several tubing options available. Stewart Warner offers mechanical gauge tubing kits in 72" (6ft) length P/N 82553-F and 192" (16ft) length P/N 366HM-F. If not using a Stewart Warner tubing kit, be sure to select a tubing kit rated for the pressure it will be receiving and with a 1/8" NPTF fitting to connect to the gauge.

1. Connect tubing to the back of the gauge.
2. Route tubing through the vehicle firewall.
3. Connect tubing to pressure point being monitored using proper fitting for pressure source.
4. Make sure tubing does not come into contact with sharp edges, moving parts or hot engine components.

Figure 3



5

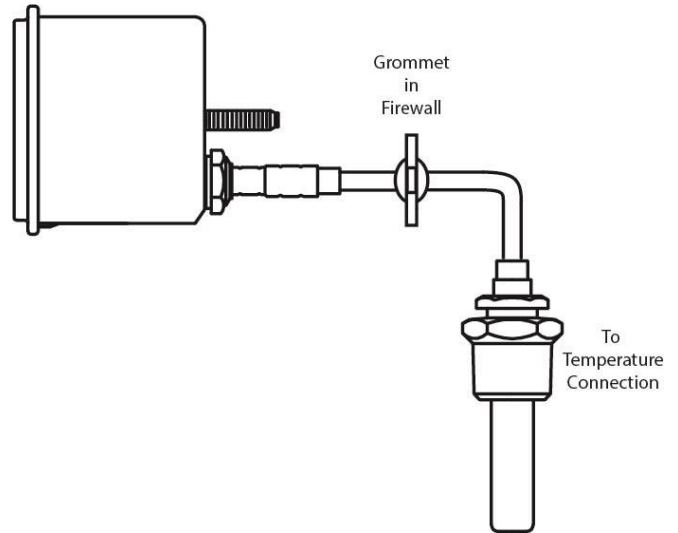
6

MECHANICAL TEMP GAUGE INSTALL (Figure 4):

1. Route capillary tube and temperature probe through the vehicle firewall.
2. Using proper thread adapter for temperature port, thread temperature probe into temperature port. Temperature probe comes with 1/2" NPTF fitting. Contact Stewart Warner distributor for additional adapter options.
3. Coil up and secure excess capillary tubing.
4. Make sure tubing does not come into contact with sharp edges, moving parts or hot engine components.

Note: Capillary tubing cannot be cut. Doing so will permanently damage the gauge and void warranty.

Figure 4



7

8

CLEANING DIRECTIONS:

For proper cleaning of instrumentation/accessories, use a glass cleaner or mild detergent with a spray on and wipe method.

WARRANTY INFORMATION:

TWO (2) YEAR LIMITED WARRANTY. Stewart Warner products are warranted against defects in workmanship and materials for a period of two (2) years from the date of purchase. Proof-of-purchase is required; otherwise, the warranty period shall default to two (2) years from date-of-manufacture (as indicated by the date code on the product). See detailed Warranty Policy for other Terms & Conditions.

STEWART WARNER
1-800-676-1837
www.stewartwarner.com

9