



## Parts List

- (1) TANK BODY
- (1) BILLET CLAMP
- (1) BILLET CLAMP SADDLE
- (1) STAINLESS STEEL MOUNTING BRACKET
- (1) 90 DEGREE 3/8" BARBED FITTINGS
- (1) 90 DEGREE 1/2" BARBED FITTINGS
- (1) LENGTH OF 1/2" HOSE
- (1) LENGTH OF 3/8" HOSE
- (4) 1/4 X 20 SHCS X 5/8
- (1) 5/16X18 NYLOCK NUT
- (1) 5/16X18X1 HHCS
- (1) 5/16 FLAT WASHER
- (1) HOSE CLAMP

For Technical Assistance, call Moroso's Tech Line  
(203)-458-0542, 8:30am-5:00pm Eastern Time  
MOROSO PERFORMANCE PRODUCTS, INC.

80 CARTER DRIVE  
GUILFORD, CT 06437

[www.moroso.com](http://www.moroso.com)

RevA  
71112

85650\_85651\_INST



Step 1: Remove engine cover.



Step 2: Locate PCV line.

For Technical Assistance, call Moroso's Tech Line  
(203)-458-0542, 8:30am-5:00pm Eastern Time  
MOROSO PERFORMANCE PRODUCTS, INC.

80 CARTER DRIVE  
GUILFORD, CT 06437

[www.moroso.com](http://www.moroso.com)



Step 3: Remove PCV line from vehicle.



For Technical Assistance, call Moroso's Tech Line  
(203)-458-0542, 8:30am-5:00pm Eastern Time  
MOROSO PERFORMANCE PRODUCTS, INC.

80 CARTER DRIVE  
GUILFORD, CT 06437

[www.moroso.com](http://www.moroso.com)



Step 4: Using 3/8" length of hose install over PCV valve.



Step 5: Using 1/2" length of hose and hose clamp install over intake nipple.

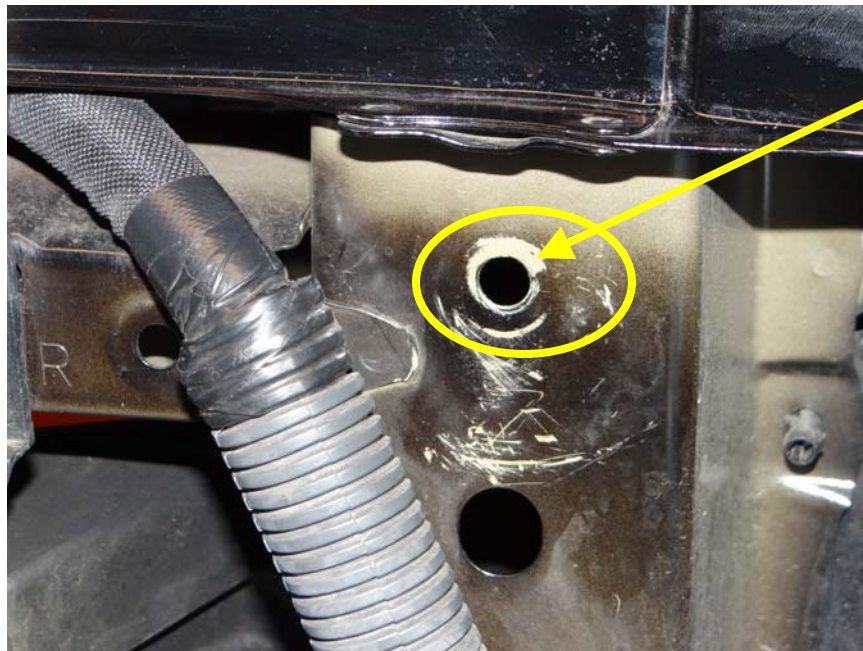
For Technical Assistance, call Moroso's Tech Line  
(203)-458-0542, 8:30am-5:00pm Eastern Time  
MOROSO PERFORMANCE PRODUCTS, INC.

80 CARTER DRIVE  
GUILFORD, CT 06437

[www.moroso.com](http://www.moroso.com)



Step 6: Route lines previously installed over to passengers side of vehicle as shown.



Step 7: Locate hole shown on passenger's side front of radiator support.

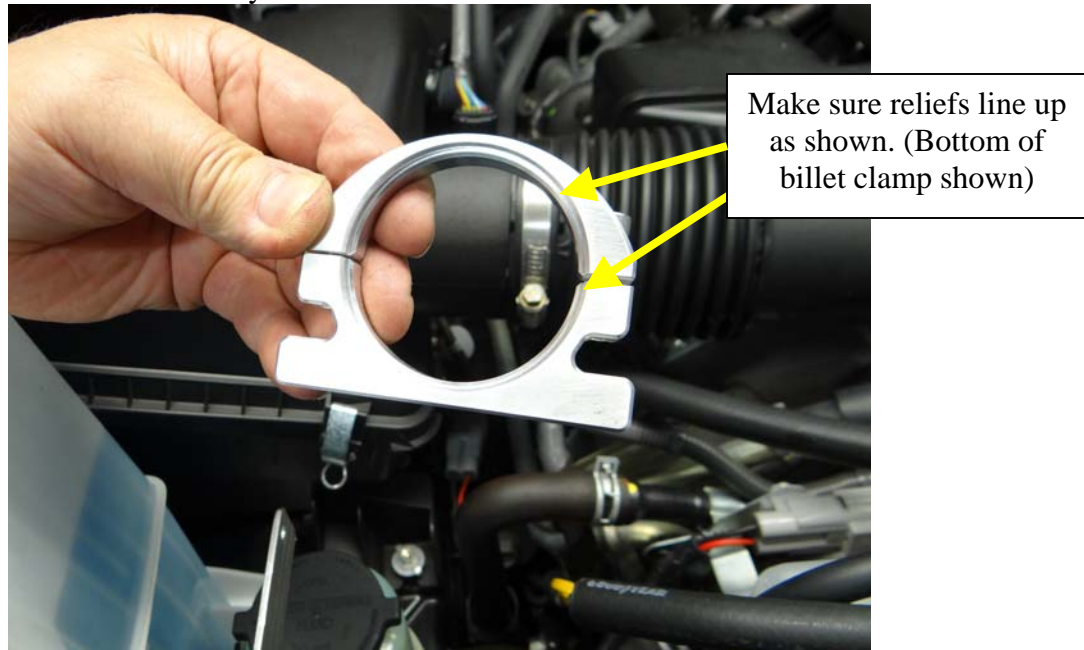
For Technical Assistance, call Moroso's Tech Line  
(203)-458-0542, 8:30am-5:00pm Eastern Time  
MOROSO PERFORMANCE PRODUCTS, INC.

80 CARTER DRIVE  
GUILFORD, CT 06437

[www.moroso.com](http://www.moroso.com)



Step 8: Install stainless steel mounting bracket as shown using 5/16-18x1 HHCS, 5/16-18 nylock nut and 5/16 flat washer.



Step 9: Assemble billet clamp and clamp saddle using (2) 1/4-20x5/8 SHCS (Do not tighten)

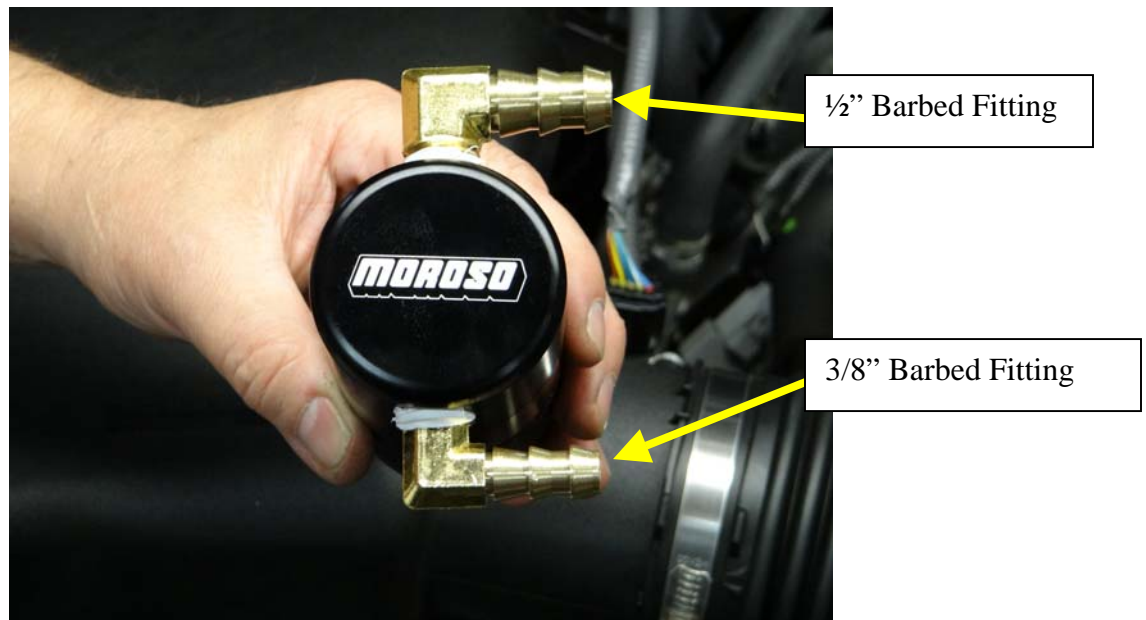
For Technical Assistance, call Moroso's Tech Line  
(203)-458-0542, 8:30am-5:00pm Eastern Time  
MOROSO PERFORMANCE PRODUCTS, INC.

80 CARTER DRIVE  
GUILFORD, CT 06437

[www.moroso.com](http://www.moroso.com)



Step 10: Assemble billet clamp assembly to stainless steel mounting bracket using (2) 1/4-20x5/8 SHCS, make sure relief's are facing down.



Step 11: Assemble Air Oil Separator as shown using Teflon tape on all fittings.

For Technical Assistance, call Moroso's Tech Line  
(203)-458-0542, 8:30am-5:00pm Eastern Time  
MOROSO PERFORMANCE PRODUCTS, INC.

80 CARTER DRIVE  
GUILFORD, CT 06437

[www.moroso.com](http://www.moroso.com)



Step 12: Insert Air Oil Separator into billet clamp.



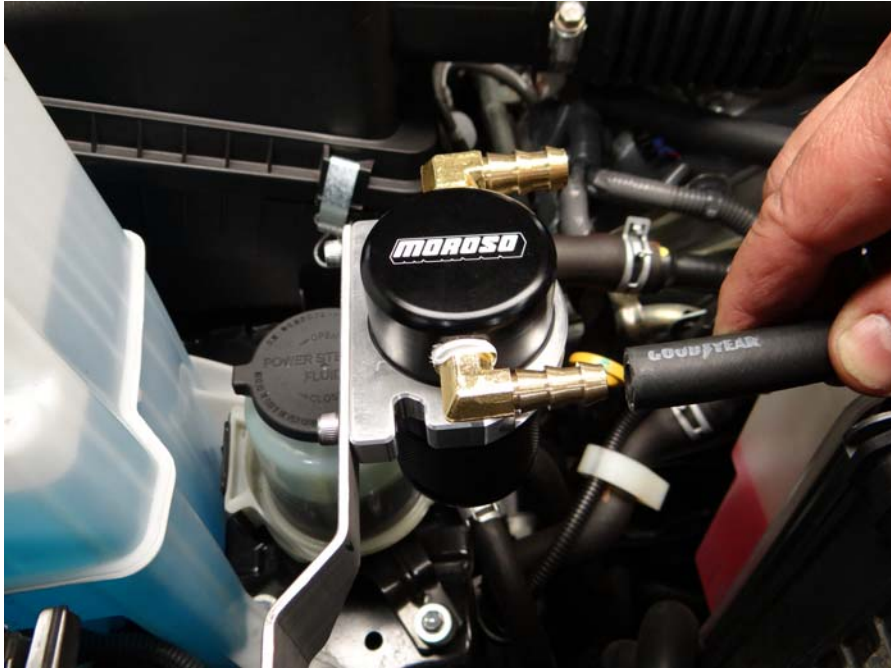
Step 13: Set height to 1 1/8" as shown and tighten clamp bolts with fittings facing engine.

For Technical Assistance, call Moroso's Tech Line  
(203)-458-0542, 8:30am-5:00pm Eastern Time  
MOROSO PERFORMANCE PRODUCTS, INC.

80 CARTER DRIVE  
GUILFORD, CT 06437

[www.moroso.com](http://www.moroso.com)





Step 14: Route 3/8" hose to Air Oil Separator, trim hose if needed and install.

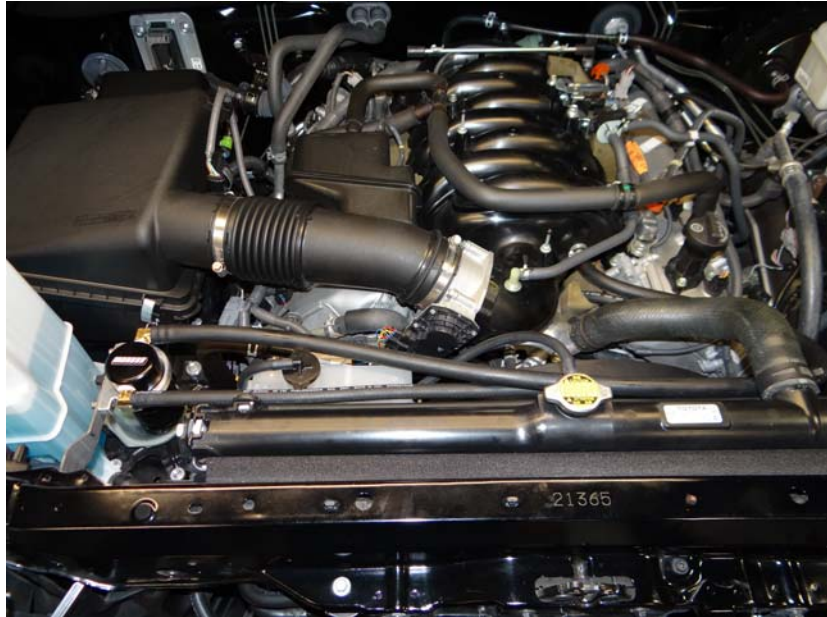


Step 15: Route 1/2" hose to Air Oil Separator, trim hose if needed and install.

For Technical Assistance, call Moroso's Tech Line  
(203)-458-0542, 8:30am-5:00pm Eastern Time  
MOROSO PERFORMANCE PRODUCTS, INC.

80 CARTER DRIVE  
GUILFORD, CT 06437

[www.moroso.com](http://www.moroso.com)



Step 16: Re-install engine cover.  
**Installation Complete**

For Technical Assistance, call Moroso's Tech Line  
(203)-458-0542, 8:30am-5:00pm Eastern Time  
MOROSO PERFORMANCE PRODUCTS, INC.

80 CARTER DRIVE  
GUILFORD, CT 06437

[www.moroso.com](http://www.moroso.com)



**Draining of Air Oil Separator is needed; this will depend on driving conditions (i.e.) normal day to day driving check every 1,000 miles until a baseline is established. A good baseline is to drain the Air Oil Separator when it is about HALF full. This will vary with temperatures (cold winters vs. hot summers). For track usage Air Oil Separator will need to be drained after every outing.**

For Technical Assistance, call Moroso's Tech Line  
(203)-458-0542, 8:30am-5:00pm Eastern Time  
MOROSO PERFORMANCE PRODUCTS, INC.

80 CARTER DRIVE  
GUILFORD, CT 06437

[www.moroso.com](http://www.moroso.com)