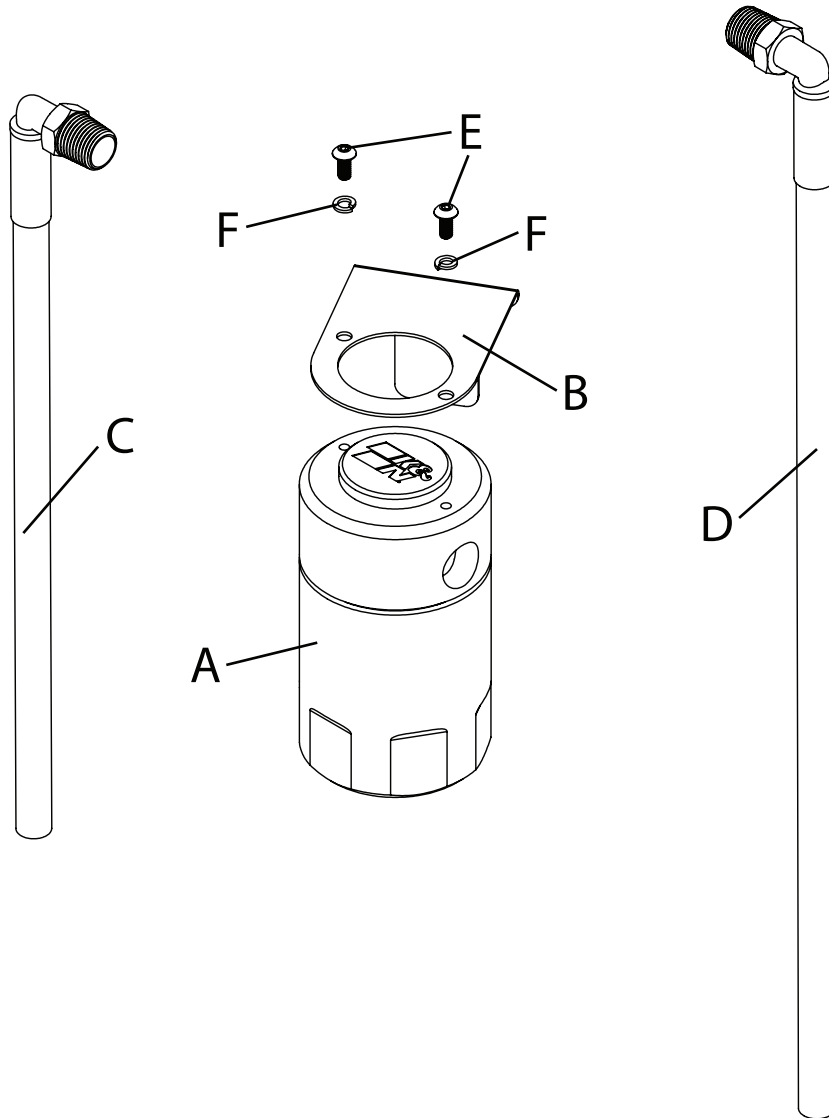




# Oil Separator INSTALLATION INSTRUCTIONS

81-0813  
TOYOTA  
2016-23 Tacoma 3.5L



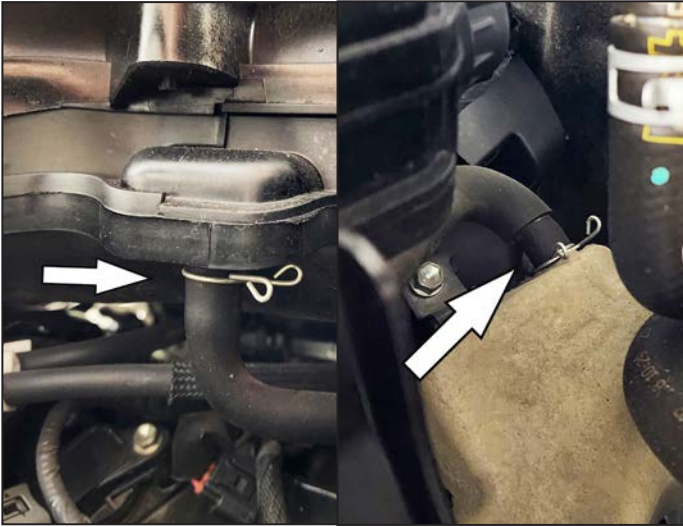
## TOOLS NEEDED:

2.5mm Allen key  
Ratchet  
12mm Socket  
13/16" Wrench

## PARTS LIST:

	Description	Qty.	Part #
A	CATCH CAN; 2.5"OD X 4.5"H	1	85-6860
B	BRACKET	1	010231
C	HOSE; 3/8"ID X 12"L	1	084162
D	HOSE; 3/8"ID X 17"L	1	084161
E	BUTTON HEAD CAP SCREW	2	91255A192
F	18-8 SPLIT LOCK WASHER	2	92146A618

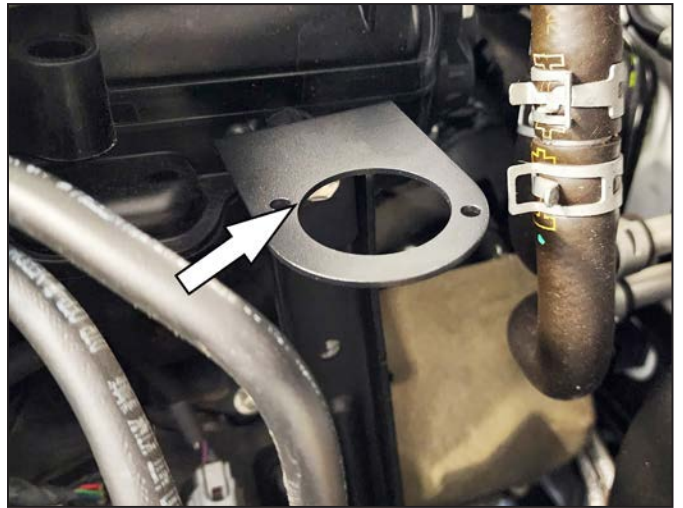
1. Verify you have all the parts included in the kit.



2. Remove factory PCV line at the manifold and rear of the engine by pinching clamp and moving away from end of the tubing.



3. Assemble the quick disconnect fittings to the top of the air/oil separator as shown. It is required to use Teflon tape on the fittings to ensure a proper seal. **NOTE: DO NOT over-tighten fittings in top of oil separator.**



4. Install mounting bracket intake manifold by using existing M8 bolt, as shown.



5. Mount the canister to the bracket using the two button head screws and lock washers. Mount the hose on passenger side to the rear of the engine using the stock hose clamp. Mount the hose on driver side to the intake manifold using the stock hose clamp. **NOTE: Lightly coat the O-Ring with oil to insert easily.**

6. We recommend to check the oil separator every 10,000 miles or 12 months (sooner if vehicle is driven in harsher conditions such as towing or off-road).