



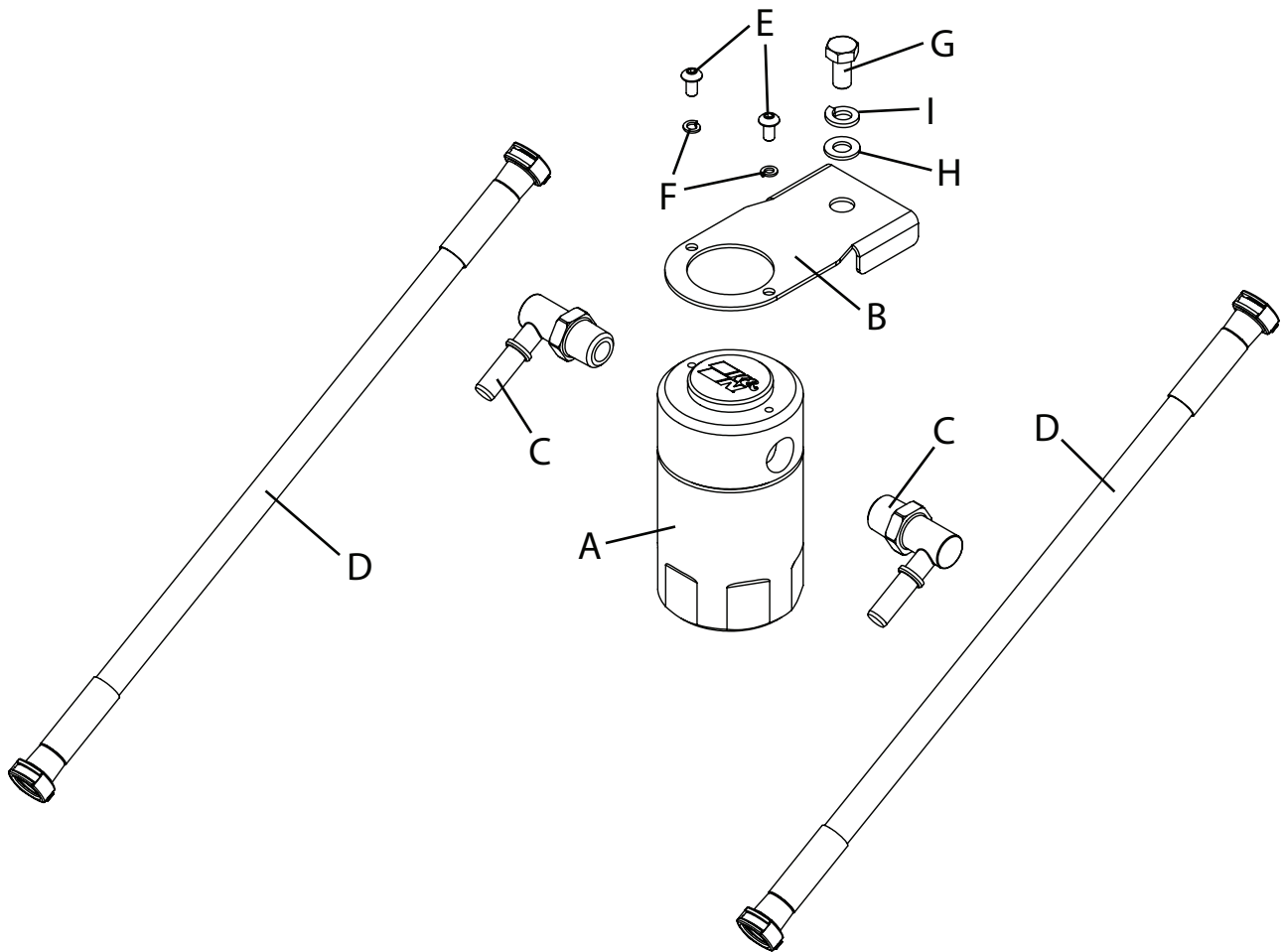
# INSTALLATION INSTRUCTIONS

81-0812

GM

2020-2023 Chevrolet Silverado, 2500/3500 6.6L Gas

2020-2023 GMC Sierra 2500/3500 6.6L Gas



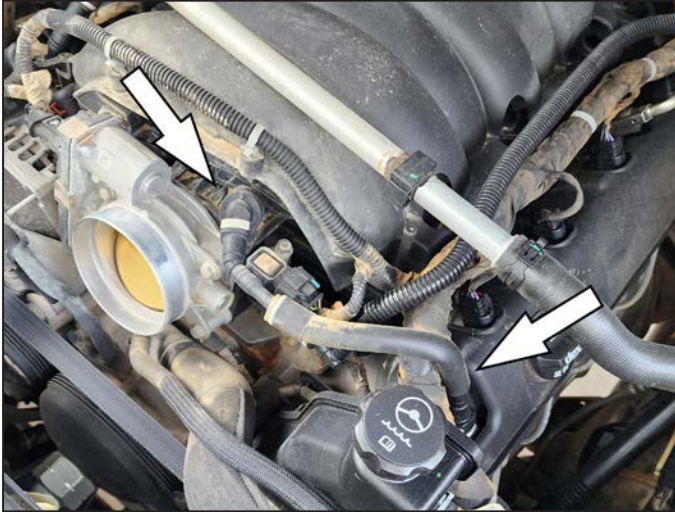
## PARTS LIST:

	Description	Qty.	Part #
A	CATCH CAN; 2.5"OD X 4.5"H	1	85-6860
B	BRACKET	1	010243
C	QUICK RELEASE; 3/8" NPT	2	082339
D	HOSE; 3/8"ID X 12.75"L	2	084182
E	BUTTON HEAD CAP SCREW	2	91255A192
F	18-8 SPLIT LOCK WASHER	2	92146A618
G	M8 X 1.25 WASHER	1	07844
H	M8 WASHER FLAT	1	08272
I	M8 WASHER LOCK	1	AEM-1-3036

## TOOLS NEEDED:

2.5mm Allen key  
Ratchet  
13mm Socket  
13/16" Wrench

1. Verify you have all the parts included in the kit.



2. Remove factory PCV line by depressing grey button and removing it from the PCV valve and intake manifold



3. Assemble the quick disconnect fittings to the top of the air/oil separator. It is required to use Teflon tape on the fittings to ensure a proper seal. **NOTE: DO NOT over-tighten fittings in top of oil separator**



4. Mount the bracket on auxiliary battery tray mount using supplied M8 nut, lock washer and flat washer (shown in Figure)



5. Mount the canister to the bracket using the two button head screws and lock washers



6. Looking at the K&N logo on top of the canister right-side up we can identify the inlet (dirty air from the PCV valve) install the hose from the valve cover to the inlet. The outlet (clean/filtered air going to the intake manifold) is on the right side. Route the outlet hose to the intake manifold. **NOTE: Lightly coat the O-Ring with oil to insert easily**

7. We recommend checking the oil separator every 10,000 miles or 1 year (sooner if vehicle is driven in harsher conditions such as towing or off-road).