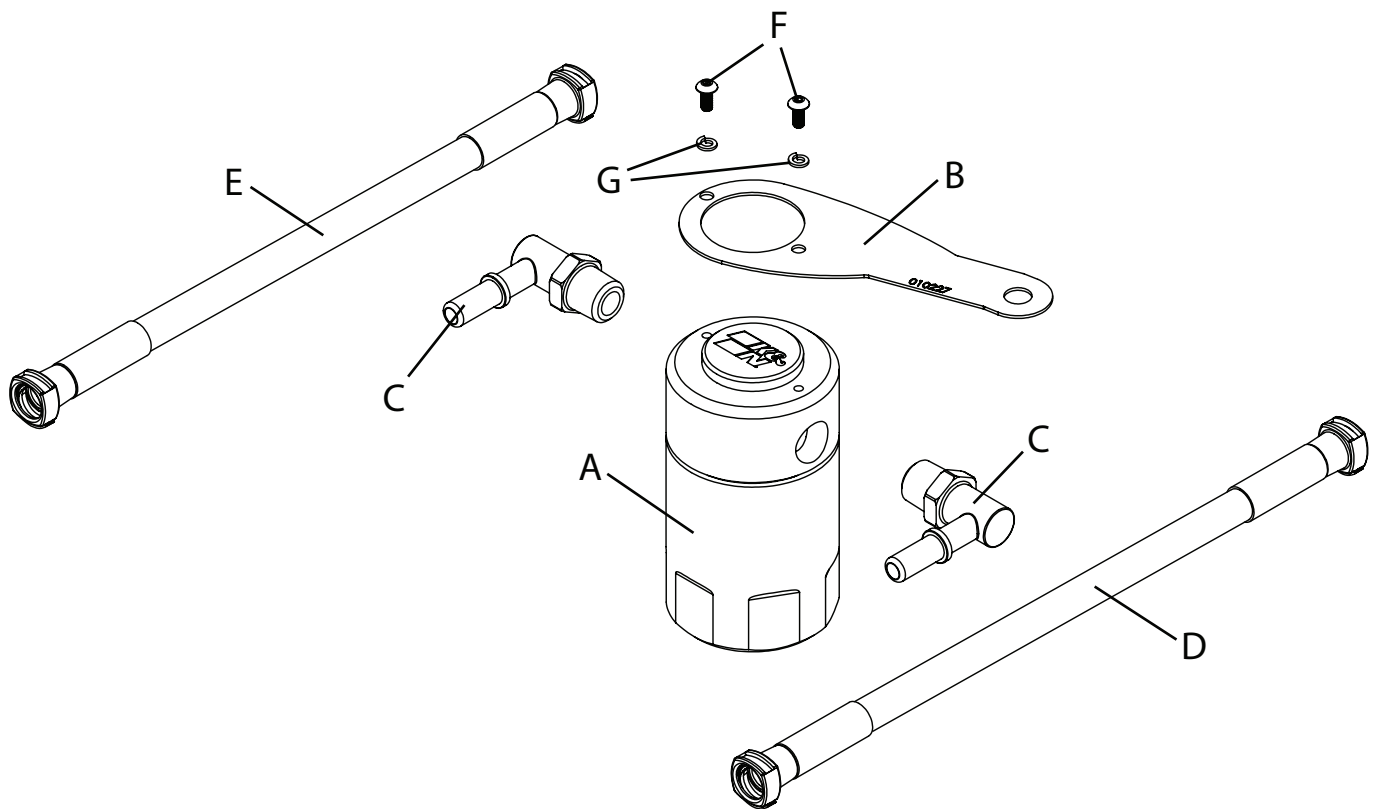




# Oil Separator INSTALLATION INSTRUCTIONS

**81-0807**  
**CHEVROLET**  
**2016-23 Camaro 6.2L**



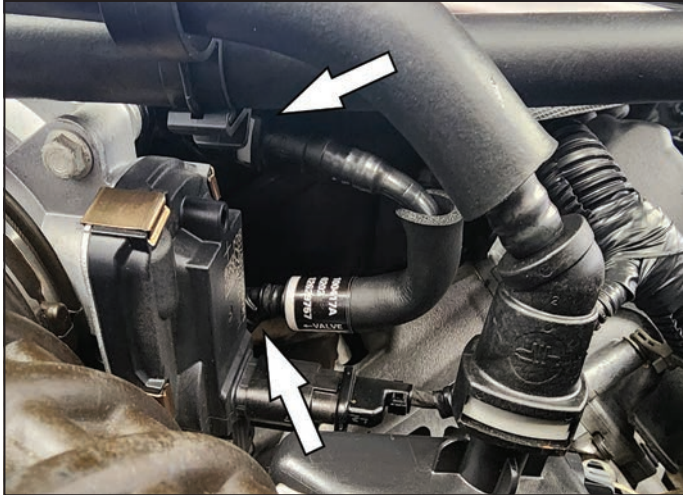
### **TOOLS NEEDED:**

2.5mm Allen key  
13mm Socket  
Ratchet  
13/16"

### **PARTS LIST:**

	Description	Qty.	Part #
A	CATCH CAN; 2.5"OD X 4.5"H	1	85-6860
B	BRACKET	1	010227
C	QUICK RELEASE; 3/8" NPT	2	082339
D	HOSE; 3/8"ID X 18.5"L	1	084153
E	HOSE; 3/8"ID X 17.5"L	1	084154
F	8-32 X 3/8; BTNHD HEX	2	91255A192
G	18-8 SPLIT LOCK WASHER	2	92146A618

1. Verify you have all the parts included in the kit.



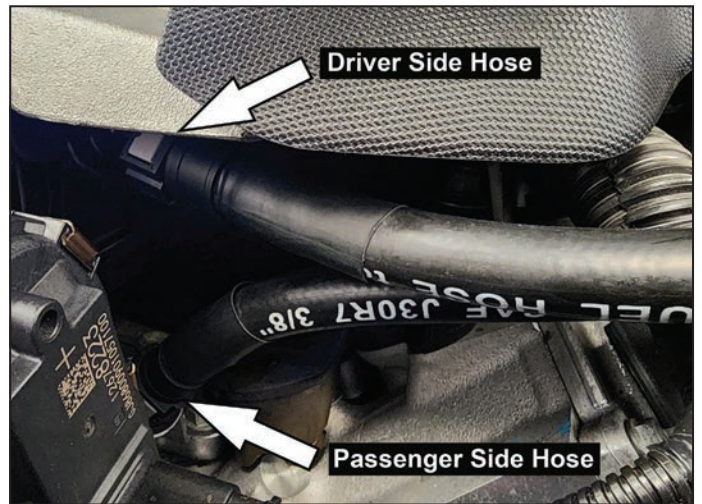
2. Remove factory PCV line by depressing grey button and removing it from the PCV valve and intake manifold.



3. Assemble the quick disconnect fittings to the top of the air/oil separator. It is required to use Teflon tape on the fittings to ensure a proper seal. **NOTE: DO NOT over-tighten fittings in top of oil separator.** Mount the canister to the bracket using the two button head screws and lock washers.



4. Mount the bracket by removing strut brace bolt closest to the firewall (shown in Figure), then mount the bracket using the existing bolt. **NOTE: Vehicles equipped with a strut bar will need to uninstall prior to mounting the oil separator.**



5. Install hose from passenger side of oil separator to the lower manifold connection. Install hose from driver's side of oil separator to the upper intake manifold connection. Mount the short hose to the intake manifold. **NOTE: Lightly coat the O-Ring with oil to insert easily.**



7. Reinstall strut bar if equipped.

8. We recommend checking the oil separator every 10,000 miles or 1 year (sooner if vehicle is driven in harsher conditions such as towing or off-road).