



Oil Separator INSTALLATION INSTRUCTIONS

81-0805

CADILLAC / CHEVROLET / GMC

2015-19 Escalade 6.2L

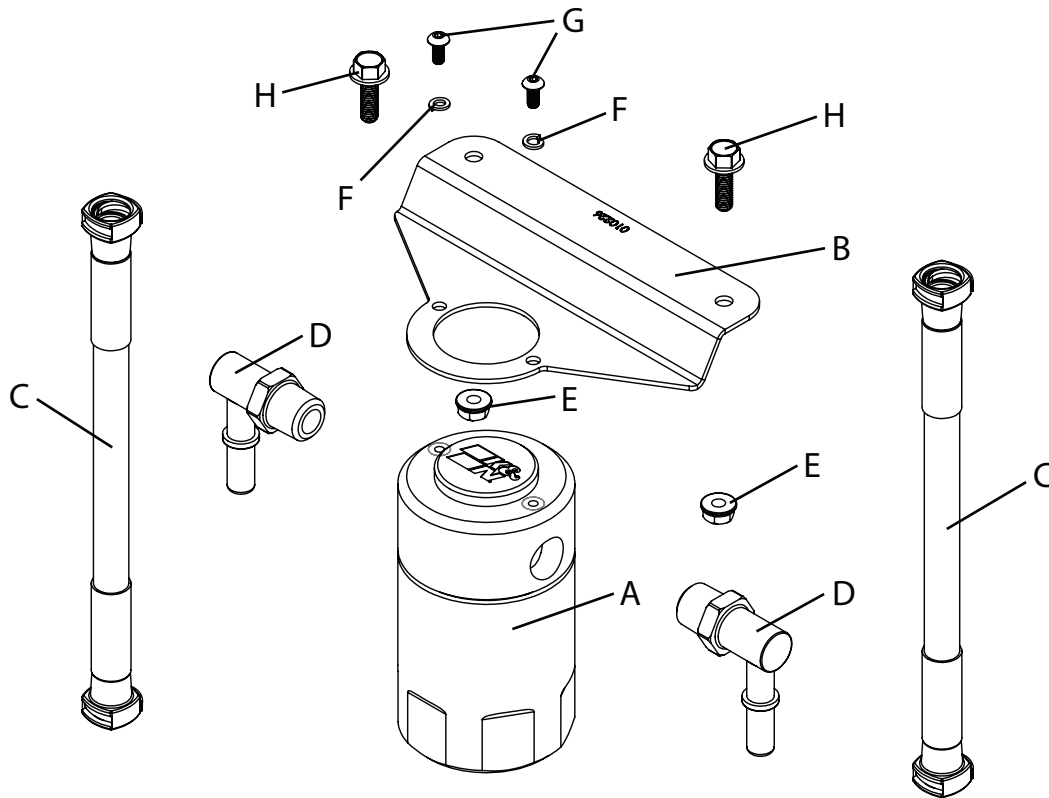
2014-18 Silverado 5.3L / 6.2L

2015-20 Tahoe 5.3L / 6.2L

2015-20 Suburban 5.3L / 6.2L

2014-18 Sierra 5.3L / 6.2L

2015-20 Yukon / Yukon XL 5.3L / 6.2L



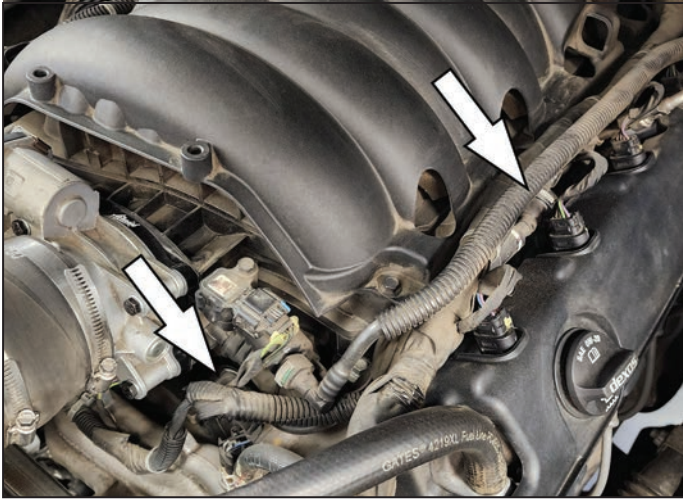
PARTS LIST:

Description	Qty.	Part #
A CATCH CAN; 2.5"OD X 4.5"H	1	85-6860
B BRACKET	1	010226
C HOSE; 3/8"ID X 16"L	2	084152
D QUICK RELEASE; 3/8" NPT	2	082339
E NUT; M6 HEX SERRATED	2	AEM-444.460.04
F 18-8 SPLIT LOCK WASHER	2	92146A618
G 8-32 X 3/8; BTNHD HEX	2	91255A192
H BOLT; HEX/FLANGE M6-1 X 20	2	98093A440

TOOLS NEEDED:

2.5mm Allen key
10mm Socket
Ratchet
10mm Wrench
13/16" Wrench

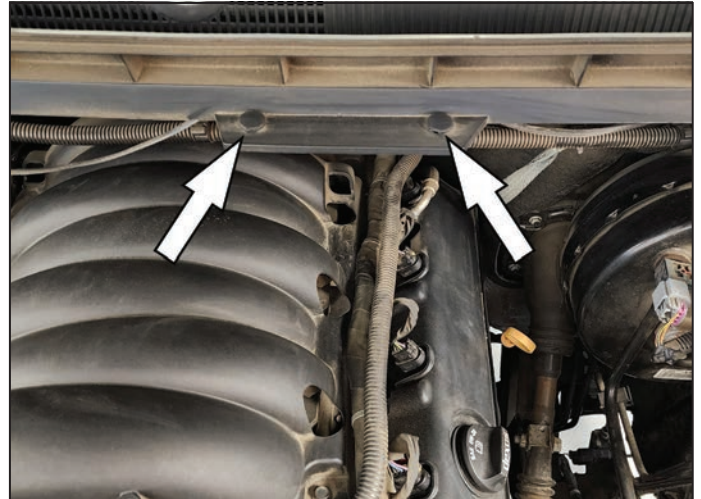
1. Verify you have all the parts included in the kit.



2a. **5.3L Models** Remove factory PCV line by depressing grey button and removing it from the PCV valve and intake manifold.



2b. **6.2L Models** Remove factory PCV line by depressing grey button and removing it from the PCV valve and intake manifold.



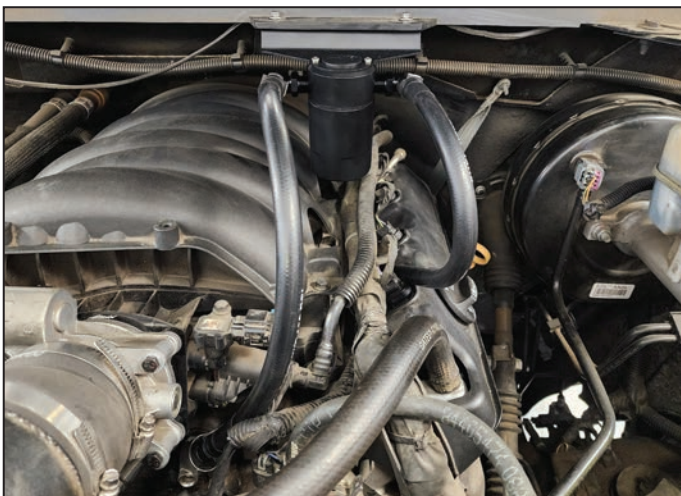
3. Remove plugs from the cowl holes.



4. Mount the bracket using the 2 holes on the cowl with M6 bolts and nuts.
NOTE: Some vehicles may have a tab underneath the mounting holes that will need to be removed so the bracket lines up.



5. Assemble the quick disconnect fittings to the top of the air/oil separator. It is required to use Teflon tape on the fittings to ensure a proper seal. **NOTE: DO NOT over-tighten fittings in top of oil separator.** Mount the canister to the bracket using the two button head screws and lock washers.



6a. **5.3L Models** Install hose from passenger side of oil separator (K&N Logo right side up) to connection under throttlebody. Then install the hose from driver's side of oil separator to the intake manifold connection at the rear. **NOTE: Lightly coat the O-Ring with oil to insert easily.**



6b. 6.2L Models Install hose from passenger side of oil separator (K&N Logo right side up) to connection under throttlebody. Then install hose from driver side of oil separator ON-TOP of the throttlebody connection. **NOTE: Lightly coat the O-Ring with oil to insert easily.**

7. We recommend checking the oil separator every 10,000 miles or 1 year (sooner if vehicle is driven in harsher conditions such as towing or off-road).