



TYPHOON INTAKE SYSTEMS



INSTALLATION INSTRUCTIONS

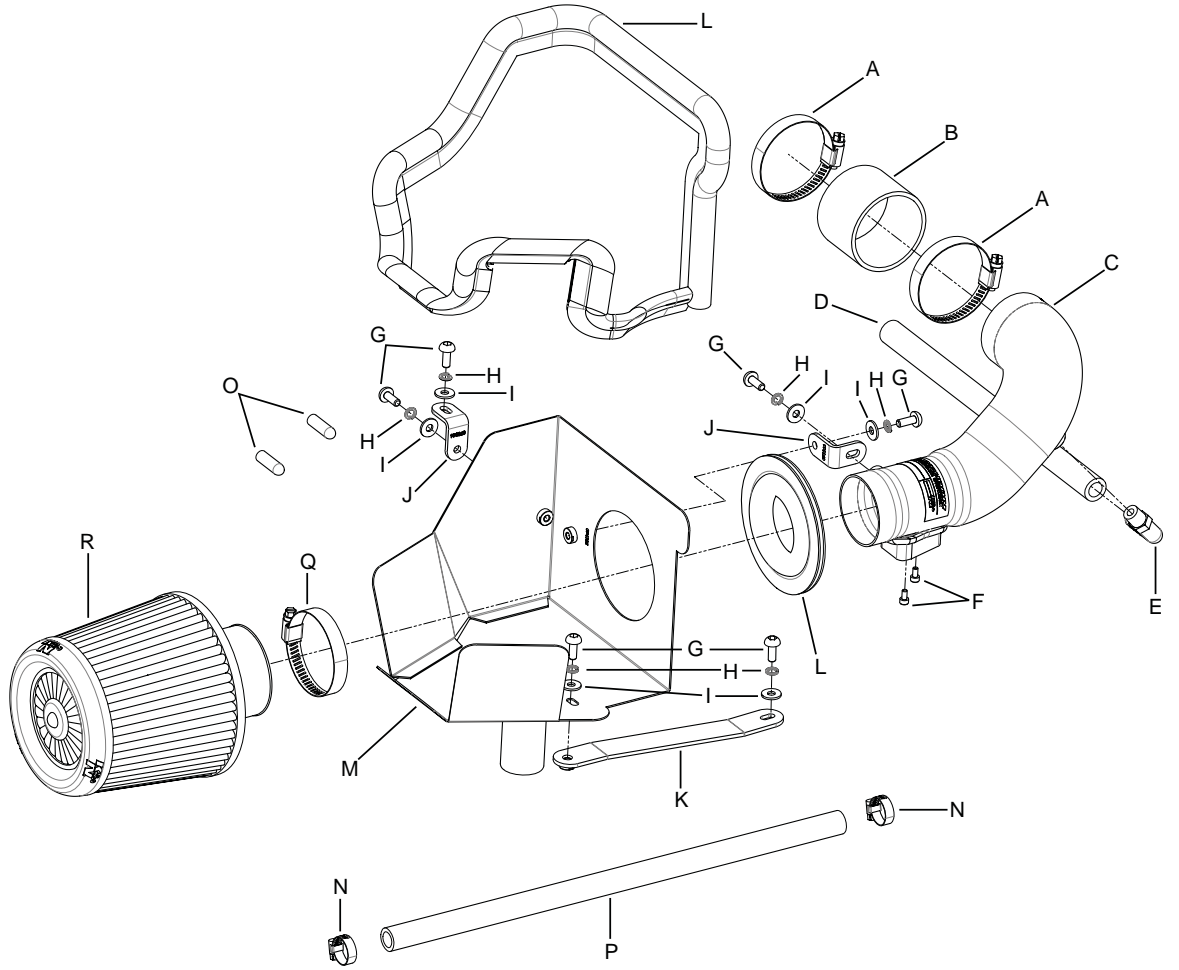
**69-1018
HONDA
2011 CRZ
L4-1.5L**

TOOLS NEEDED:

- Flat Blade Screwdriver
- Phillips Screw Driver
- Ratchet
- Extension
- 10mm Socket
- 4mm Allen Wrench
- 3mm Allen Wrench
- Pliers

PARTS LIST:

Description	Qty.	Part #
A	2	08530
B	1	08284
C	1	27487
D	1	087031
E	1	08110FK
F	2	07733
G	6	07730
H	6	1-3025
I	6	08269
J	2	070066
K	1	083148
L	1	102480
M	1	074085
N	2	21850
O	2	08215
P	1	5-2017
Q	1	08554
R	1	RX-4950



NOTE: FAILURE TO FOLLOW INSTALLATION INSTRUCTIONS AND NOT USING THE PROVIDED HARDWARE MAY DAMAGE THE INTAKE TUBE, THROTTLE BODY AND ENGINE.

TO START:

1. Turn off the ignition and disconnect the negative battery cable.

NOTE: Disconnecting the negative battery cable erases pre-programmed electronic memories. Write down all memory settings before disconnecting the negative battery cable. Some radios will require an anti-theft code to be entered after the battery is reconnected. The anti-theft code is typically supplied with your owner's manual. In the event your vehicles' anti-theft code cannot be recovered, contact an authorized dealership to obtain your vehicles anti-theft code.



2. Disconnect the mass air sensor electrical connection and unhook the wiring harness from the airbox.



3. Remove the two bolts securing the fresh air intake scoop to the core support.



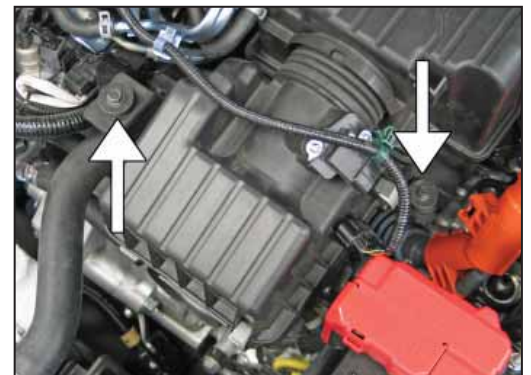
4. Loosen the hose clamp that secures the fresh air intake scoop to the airbox.



5. Remove the fresh air intake scoop from the vehicle.
NOTE: The lower fresh air duct will need to be disconnected as the fresh air intake scoop is removed.



6. Loosen the hose clamp securing the intake hose to the throttle body.



7. Remove the two bolts that secure the factory airbox.



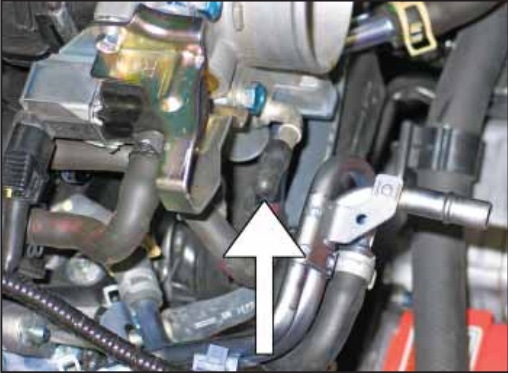
8. Remove the airbox assembly from the vehicle.
NOTE: It will be necessary to release the spring clamp securing the crankcase vent tube and hold the crankcase vent tube while removing the airbox.
NOTE: K&N Engineering, Inc., recommends that customers do not discard factory air intake.



9. Separate the lower intake duct from the fresh air intake scoop.



10. Reinstall the lower fresh air duct onto the factory plastic duct as shown.



11. **Be sure the engine is cool before performing this step. Be sure to capture any released coolant.** Release the spring clamps securing the coolant bypass hose to the throttle body and the crankcase vent hose to the valve cover. Remove the bypass hose from the throttle body fitting, quickly plugging the outlet with a cap plug to prevent coolant loss. Remove the crankcase vent hose from the valve cover.



12. Release the spring clamp securing the coolant bypass hose to the thermostat housing. Remove the bypass hose from the thermostat housing fitting, quickly plugging the outlet with the remaining cap plug to prevent coolant loss. Remove the bypass/crankcase vent hose assembly from the vehicle.

NOTE: Be sure to capture any released coolant.



13. Route the provided bypass hose through the factory retaining clip as shown.



14. Remove the cap plugs and install the bypass hose onto the coolant fittings and secure with the provided hose clamps.
NOTE: Be sure to replenish the captured coolant into the reservoir.



15. Install the provided silicone hose (08284) onto the throttle body and secure with the provided hose clamp.



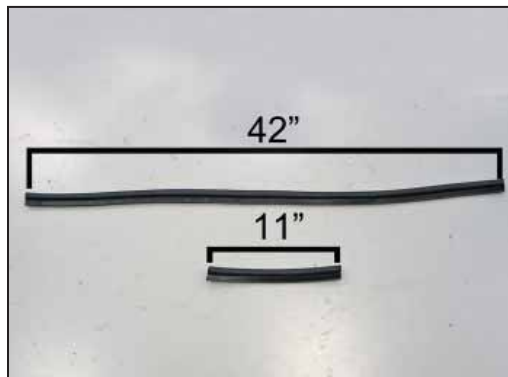
16. Remove the two screws securing the mass air sensor into the factory airbox, and then remove the mass air sensor.



17. Install the mass air sensor into the K&N® intake tube and secure with the provided hardware.



18. Install the provided 90° vent fitting into the K&N® intake tube as shown.



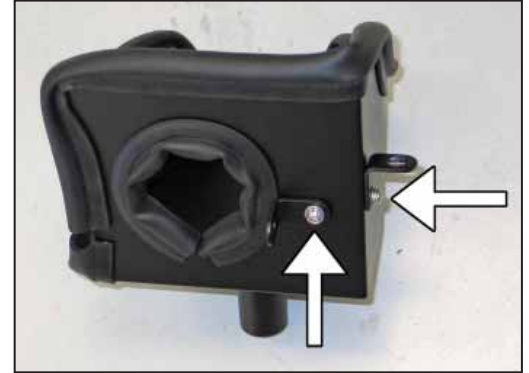
19. Cut the provided edge trim into two sections. One section will be 11" long; the other section will be cut to a length of 42".



20. Install the 42" long edge trim around the heat shield.



21. Install the 11" long edge trim into the hole of the heat shield.



22. Install the provided "L" brackets (070066) onto the heat shield as shown using the provided hardware.



23. Install the flat bracket (083148) onto the heat shield as shown using the provided hardware.



24. Install the K&N® intake tube into the heat shield and secure to the mounting bracket with the provided hardware.



25. Install the heat shield/tube assembly into position and install the lower air duct onto the tube on the heat shield. Secure the heat shield to the factory airbox mounting locations with the hardware provided. Then secure the intake tube to the throttle body hose with the provided hose clamp.



26. Attach the provided crankcase vent hose to the valve cover port, and then attach the open end to the 90° fitting in the intake tube.

NOTE: Some trimming of the crankcase vent hose will be necessary.



27. Install the K&N® air filter onto the intake tube and secure with the provided hose clamp.



28. Reconnect the mass air sensor electrical connection.



29. Reconnect the vehicle's negative battery cable. Double check to make sure everything is tight and properly positioned before starting the vehicle.

30. It will be necessary for all K&N® high flow intake systems to be checked periodically for realignment, clearance and tightening of all connections. Failure to follow the above instructions or proper maintenance may void warranty.

ROAD TESTING:

1. Start the engine with the transmission in neutral or park, and the parking brake engaged. Listen for air leaks or odd noises. For air leaks secure hoses and connections. For odd noises, find cause and repair before proceeding. This kit will function identically to the factory system except for being louder and much more responsive.

2. Test drive the vehicle. Listen for odd noises or rattles and fix as necessary.

3. If road test is fine, you can now enjoy the added power and performance from your kit.

4. K&N Engineering, Inc., suggests checking the air filter element periodically for excessive dirt build-up. When the element becomes covered in dirt (or once a year), service it according to the instructions on the Recharger® service kit, part number 99-5050 or 99-5000.

STREET LEGAL IN MOST STATES

**NOT LEGAL FOR USE IN CA & OTHER STATES
ADOPTING CA EMISSIONS STANDARDS**

See our catalog or knfilters.com for CARB status on each part for a specific vehicle

* FREE K&N® decal To register your warranty, please see us online at knfilters.com/register. FREE K&N® decal *

• 1455 CITRUS ST., P.O. BOX 1329, RIVERSIDE, CA., U.S.A. 92502 • TECH SERVICE 800-858-3333 • FAX 951-826-4001
• e-mail: tech@knfilters.com • WWW: <http://www.knfilters.com>