



AIRCHARGER[®]

HIGH-FLOW INTAKE KITS

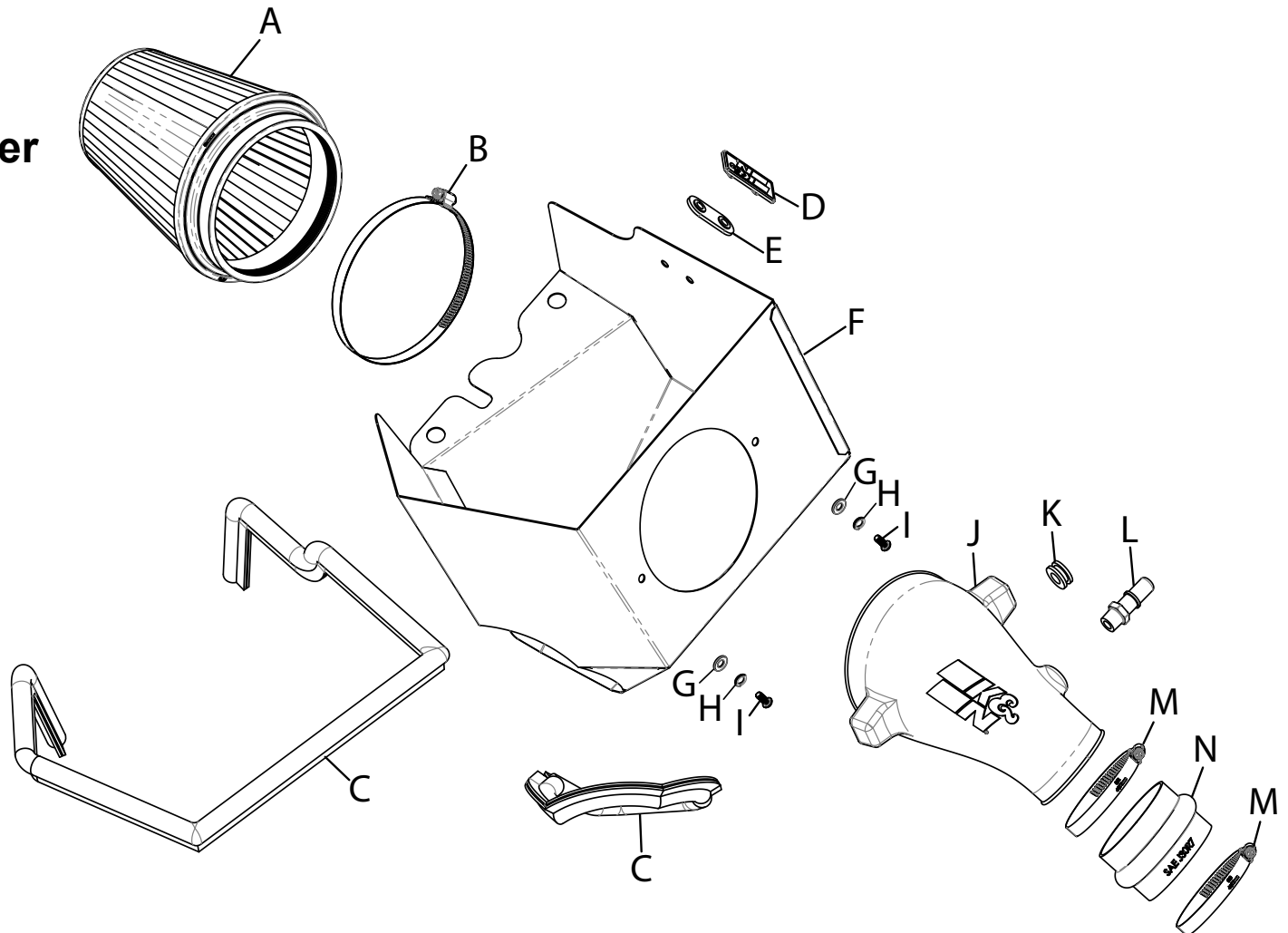
NOT LEGAL FOR SALE OR USE ON ANY POLLUTION CONTROLLED MOTOR VEHICLE IN CALIFORNIA OR STATES ADOPTING CALIFORNIA EMISSION PROCEDURES.
See knfilters.com for CARB status on each part for a specific vehicle

INSTALLATION INSTRUCTIONS

63-1590
JEEP
2022-23 Grand Wagoneer
V8-6.4L

TOOLS NEEDED:

- Flat blade screw driver
- side cutters
- 13/16" wrench



PARTS LIST:

Description	Qty.	Part #	Description	Qty.	Part #	Description	Qty.	Part #
A AIR FILTER	1	RU-1020	F HEAT SHIELD	1	074564	K GROMMET; 1/2"ID, .75GD	1	KITGRMT03
B HOSE CLAMP; #104	1	08697	G WASHER; 6MM FLAT	2	08269	L FITTING; 3/8"NPT TO .620"	1	82637
C EDGE TRIM; (70"L)	1	102454	H WASHER; M6 SPLIT LOCK	2	1-3025	M HOSE CLAMP; #56	2	08620
D BADGE; PLASTIC, SNAP-IN	1	088096	I BOLT; M6 X 1 X 16MM, BTNHD	2	07730	N HOSE; HUMP 3.5"ID X 2.5"L	1	08699
E PLATE; LOCKING K&N	1	010151	J TUBE; (QK)	1	087543			

If you need any assistance please call 1-800-858-3333 to speak with a representative in our Customer Service Center before returning the product.

NOTE: FAILURE TO FOLLOW INSTALLATION INSTRUCTIONS AND NOT USING THE PROVIDED HARDWARE MAY DAMAGE THE INTAKE TUBE, THROTTLE BODY AND ENGINE.

TO START:

1. Turn off the ignition and disconnect the negative battery cable.
NOTE: Disconnecting the negative battery cable erases pre-programmed electronic memories. Write down all memory settings before disconnecting the negative battery cable. Some radios will require an anti-theft code to be entered after the battery is reconnected. The anti-theft code is typically supplied with your owner's manual. In the event your vehicles anti-theft code cannot be recovered, contact an authorized dealership to obtain your vehicles anti-theft code.



2. Disconnect the IAT sensor electrical connection. Disconnect the CCV fitting from the intake tube.



3. Loosen the hose clamp that secures the intake hose to the throttle body.



4. Loosen the hose clamp that secures the intake tube to the air filter housing and then remove the intake hose from the vehicle.



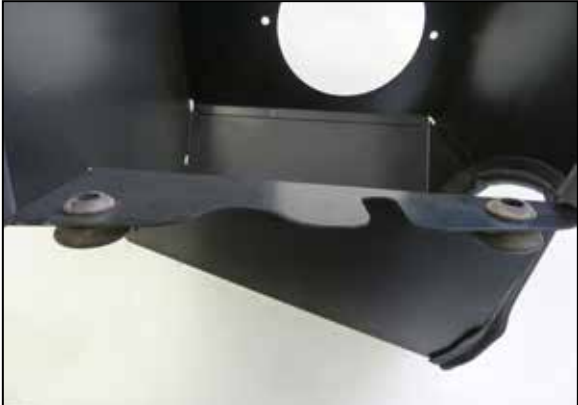
5. Pull the air filter housing up to disengage it from the mounting grommets and then remove it from the vehicle.



6. Cut the edge trim into one section of 45.5' length and one of 23.5" long. Install the edge trim onto the heat shield as shown.



7. Install the K&N badge onto the heat shield, with the locking plate.



8. Remove two mounting grommets from the stock air filter housing and install them into the K&N heat shield as shown.



9. Install the K&N heat shield into the vehicle so the mounting pins insert into the mounting grommets and the fresh air intake fits inside the opening.



10. Install the provided hump coupler onto the throttle body and secure with the provided hose clamp.



11. Remove the IAT sensor from the factory intake tube, remove the O-ring from the sensor and then install it into the K&N intake using the provided grommet. Apply thread sealer to the CCV fitting and then install the fitting into the K&N intake tube.



12. Install the K&N intake tube into the coupler and then into the heat shield, align the tube in the heat shield and secure with the provided hardware and hose clamp.



13. Reconnect the IAT sensor electrical connection and connect the CCV line to the fitting.



14. Install the Air filter onto the intake tube and secure with the provided hose clamp.



15. Reconnect the vehicle's negative battery cable. Double check to make sure everything is tight and properly positioned before starting the vehicle.

16. It will be necessary for all K&N® high flow intake systems to be checked periodically for realignment, clearance and tightening of all connections. Failure to follow the above instructions or proper maintenance may void warranty.

ROAD TESTING:

1. Start the engine with the transmission in neutral or park, and the parking brake engaged. Listen for air leaks or odd noises. For air leaks secure hoses and connections. For odd noises, find cause and repair before proceeding. This kit will function identically to the factory system except for being louder and much more responsive.

2. Test drive the vehicle. Listen for odd noises or rattles and fix as necessary.

3. If road test is fine, you can now enjoy the added power and performance from your kit.

4. K&N Engineering, Inc., requires cleaning the intake system's air filter element every 100,000 miles. When used in dusty or off-road environments, our filters will require cleaning more often. We recommend that you visually inspect your filter once every 25,000 miles to determine if the screen is still visible. When the screen is no longer visible some place on the filter element, it is time to clean it. To clean and re-oil, purchase our filter Recharger® service kit, part number 99-5050 or 99-5000 and follow the easy instructions.

NOT LEGAL FOR SALE OR USE ON ANY POLLUTION CONTROLLED MOTOR VEHICLE IN CALIFORNIA OR STATES ADOPTING CALIFORNIA EMISSION PROCEDURES.

See knfilters.com for CARB status on each part for a specific vehicle