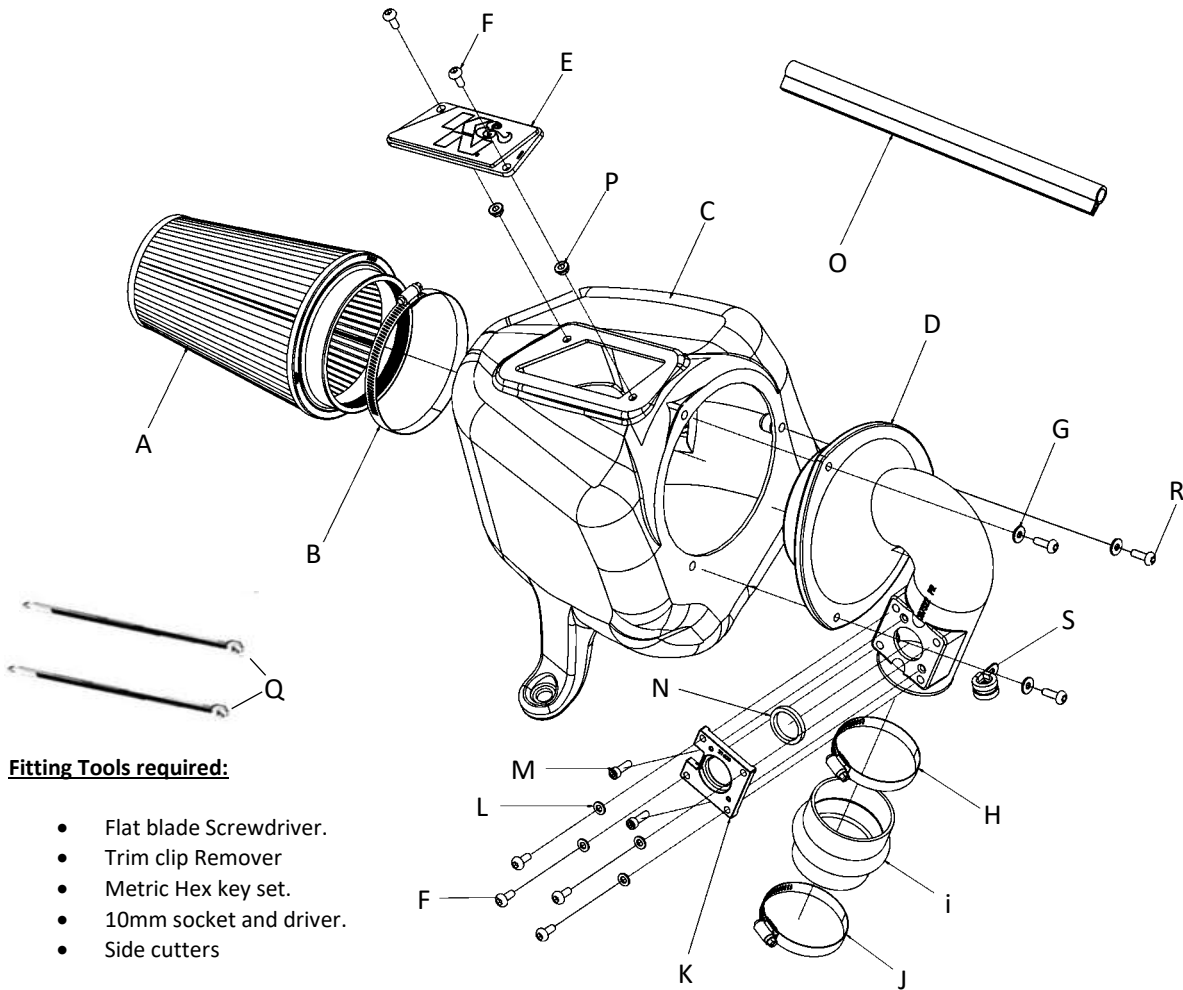


Toyota Hilux 2.8D

2015-2022

Toyota Fortuner 2.8D

2015-2022



Fitting Tools required:

- Flat blade Screwdriver.
- Trim clip Remover
- Metric Hex key set.
- 10mm socket and driver.
- Side cutters

No	Part Number	Description	QTY.
A	RU-2815	5"FLG, 6-1/2"B, 4-3/8"T, 8-3/4"H	1
B	AIR-KITHS88	HOSE CLAMP; #88	1
C	087521	AIRBOX; 57s-8750, PQ, XLHDPE	1
D	087522	TUBE; 57s-8750, PR, XLHDPE	1
E	08351	PLATE; K&N LOGO, CLEAR, 6.2" X 2.4" X .25"	1
F	07730	BOLT; M6 X 1 X 16MM , BUTTONHEAD, SS	6
G	08275	WASHER; 1/4"ID X 5/8"OD - SAE	3
H	08601	HOSE CLAMP; #48	1
I	5-575	HOSE; HUMP 2.75" TO 2.75" X 3"L REINFORCED	1
J	08577	HOSE CLAMP; #44	1
K	21603	ADAPTOR; MAF ADAPTER, NYLON 6/6 GF, BLACK	1
L	08269	WASHER; 6MM FLAT, SS	4
M	07733	BOLT; M4-.7 X 8MM, ALLEN HEAD CAP, SS	2
N	A2050-97	GASKET; 30MM ID, 38MM OD, 5MM THK, FOAM	1
O	102475	EDGE TRIM; 3/4" BULB, TOP LOC, 14"L	1
P	444.460.04	NUT; M6, HEX, SERRATED	2
Q	21590	CABLE TIE PLASTIC BLACK	2
R	AIR-KIT20BHC3060	Bolt: M6 x 20MM BUTTONHEAD, SS	3
S	A2100-44	P CLIP; 15MM I/D	1



57s-8750



Installation Instructions

1. Take the key from the ignition, disconnect the negative terminal from the battery.
2. Unclip the electrical harness plug from the Mass Air Sensor. (Fig. #1)
3. Completely unclip the MAS wiring loom from the airbox. (Fig. #2)
4. Loosen the 2 hose clamps and remove the intake pipe from the air box and turbo as shown. (Fig. #3)
5. Remove the three mounting screws and carefully lift and remove the complete airbox assembly from the vehicle (Fig. #4)
6. Remove the airbox rubber mountings from the airbox. (Fig. #5)
7. Fit the original rubber mountings to the new airbox as shown. (Fig. #6)
8. Remove the water drain from the original airbox and refit to the new airbox as shown. (Fig. #7)
9. Trim as appropriate & fit the edge trim supplied to the airbox intake as shown. (Fig. #8)
10. Fit the logo plate into the airbox using the M6 bolts and serrated nuts provided. (Fig. #9)
11. Fit the filter onto the intake pipe and secure using the hose clamp supplied. (Fig. #10)
12. Secure the air box and intake pipe assembly together using the 3x M6 x 20mm buttonhead bolts and washers supplied. (Fig. #11)
13. Fit the Mas adaptor plate to the intake pipe using the gasket, bolts and washers supplied. (Fig. #12)
14. Carefully remove the MAS from the original airbox assembly. (Fig. #13)
15. Install the MAS to the new intake pipe using the M4 screws supplied. (Fig. #14)
16. Fit the hump hose to the intake pipe using the hose clamp supplied. (Fig. #15)
17. Install the 57S airbox assembly to the vehicle using the 3 original mounting bolts. (Fig. #16)
18. Align and connect the hump hose to the engine intake, firmly tighten the hose clamps. (Fig. #17)
19. Reconnect the electrical harness plug to the MAS, secure the electrical harness to the bolt shown using the 'P' clip supplied (Fig. #18)
20. Secure the MAS electrical harness using the cable ties supplied. (Fig. #19)
21. Reconnect the negative battery terminal, carry out a final height/alignment check of the kit fitment, Installation is now complete. (Fig. #20)

WARNING: Before starting the engine carry out a final fitment check of the K&N performance kit. It will be necessary for kits to be checked periodically for realignment, clearance and tightening of all connections. Failure to follow the instructions or proper maintenance may void the warranty.

FILTER MAINTENANCE: K&N suggests checking the filter periodically for excessive dirt build-up. When the element becomes covered in dirt (or once a year), service it according to the instructions on the service kit available from your K&N dealer, part number 99-5050

For the cleaning instructions please visit our website: www.knfilters.com/cleaning

For technical support contact our European technical team: eindhoven.tech@knfilters.com

Installation Instructions



Fig.#1



Fig.#2



Fig.#3



Fig.#4



Fig.#5



Fig.#6



Fig.#7



Fig.#8



Fig.#9



Fig.#10



Fig.#11



Fig.#12

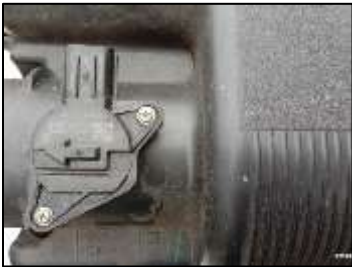


Fig.#13



Fig.#14



Fig.#15



Fig.#16



Fig.#17



Fig.#18



Fig.#19



Fig.#20