



Installation Instructions

**SIDE BARS PART#:9428\8628\8828
2007-10 JEEP WRANGLER 4 DOOR**

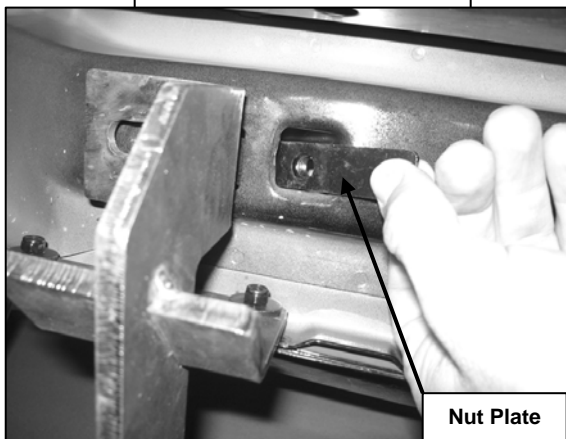
PARTS LIST

1 Driver Side Bar	4 10mm Fender Washers
1 Passenger Side Bar	2 8mm x 36mm Hex Bolts
1 Front Driver Side Bracket	12 8mm x 25 Hex Bolts
1 Rear Driver Side Bracket	14 8mm Lock Washers
1 Mid Driver Side Bracket	12 8mm Flat Washers
1 Front Passenger Side Bracket	2 8mm Big Fender Washers
1 Rear Passenger Side Bracket	12 6MM x 25MM Button Heads
1 Mid Passenger Side Bracket	12 6MM Nylock Nuts
4 10mm x 25mm Hex Head Bolts	24 6MM Fender Washers
4 10mm Nut Plates	1 4MM Allen Tool
4 10mm Lock Washers	

PROCEDURE:

- 1. REMOVE CONTENTS FROM BOX. VERIFY ALL PARTS ARE PRESENT. READ INSTRUCTIONS CAREFULLY.**
2. Insert a nut plate into the frame opening on the front passenger side with the nut facing up (Figure 1).
3. Locate two passenger side front factory holes on the pinch weld. Attach the Front Passenger Side Mounting Bracket to the pinch weld using the included (2) 6-1.00mm x 25mm Allen Bolt, (2) 6mm Nylock Nut, and (4) 6mm Fender Washers (Figure 2). Do not tighten at this time.
4. Attach the Front Passenger Side Mounting Bracket to the side panel by using the included (1) 10-1.50mm x 25mm Hex Head Bolt, (1) 10mm Lock Washer, and (1) Fender Washer (Figure 2). Do not tighten at this time.
5. Repeat steps 3 & 4 for Center Passenger Side, Front Driver Side, and Center Driver Side Mounting Brackets.
6. Locate the rear passenger side factory hole on the side panel. Attach Rear Passenger Side Mounting Bracket by using (1) 8-1.25mm x 35mm Hex Head Bolt, (1) 8mm Lock Washer, and (1) 8mm Fender Washer (Figure 3). Do not tighten at this time.
7. Attach the Rear Passenger Side Mounting Bracket to the pinch weld using the included (2) 6-1.00mm x 25mm Allen Bolt, (2) 6mm Nylock Nut, and (4) 6mm Fender Washers (Figure 3). Do not tighten at this time.
8. Repeat steps 6 & 7 for Rear Driver Side Mounting Bracket.
9. Position Passenger Side Bar onto brackets. Attach Side Bar to Mounting Brackets by using the included (6) 8-1.25mm x 25mm Hex Head Bolt, (6) 8mm Lock Washers, and (6) 8mm Fender Washers (Figure 4). Do not tighten at this time.
10. Level and adjust Side Bar and Brackets then tighten all hardware at this time.
11. Repeat steps 9 & 10 for Driver Side Bar.
12. Do periodic inspections to the installation to make sure that all hardware is secure and tight.

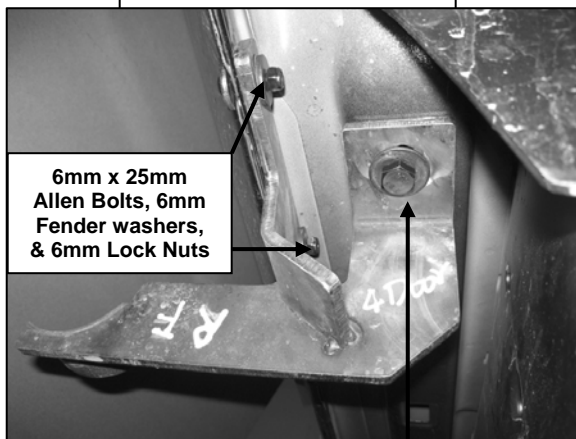
Front Passenger Side Shown



Nut Plate

Figure 1

Front Passenger Side Shown

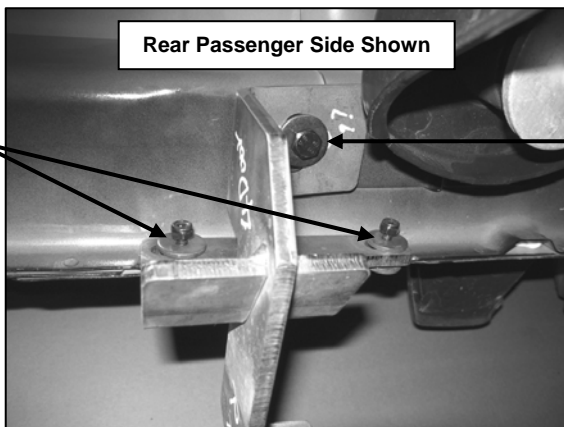


6mm x 25mm Allen Bolts, 6mm Fender washers, & 6mm Lock Nuts

Figure 2

10mm x 35mm Hex Head Bolt, 10mm Fender washer, & 10mm Lock Washer

Rear Passenger Side Shown

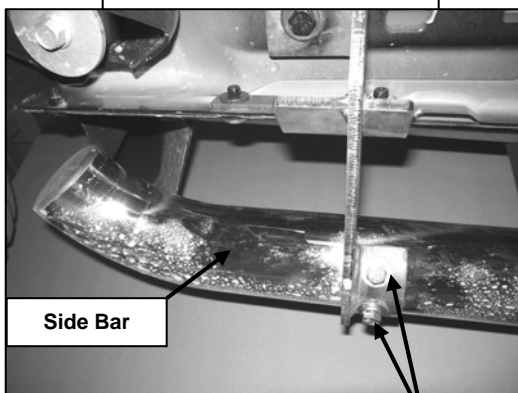


6mm x 25mm Allen Bolts, 6mm Fender washers, & 6mm Lock Nuts

Figure 3

8mmx 35mm Hex Head Bolt, 8mm Fender washer, & 8mm Lock Washer

Front Passenger Side Shown



Side Bar

Figure 4

8mmx 25mm Hex Head Bolts, 8mm Fender washers, & 8mm Lock Washers

Installation Complete



Figure 2