

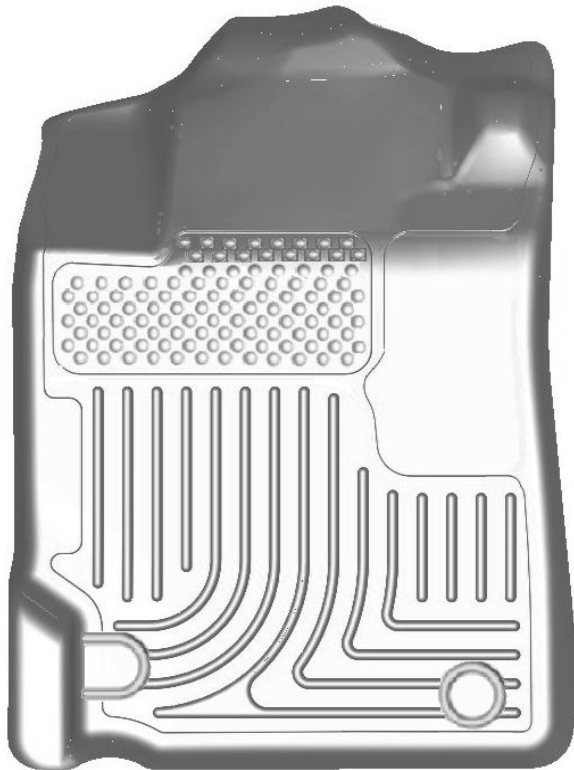
HUSKY **WeatherBEATER™** **Custom Vehicle Floor Protection**

CARE AND USE INSTRUCTIONS

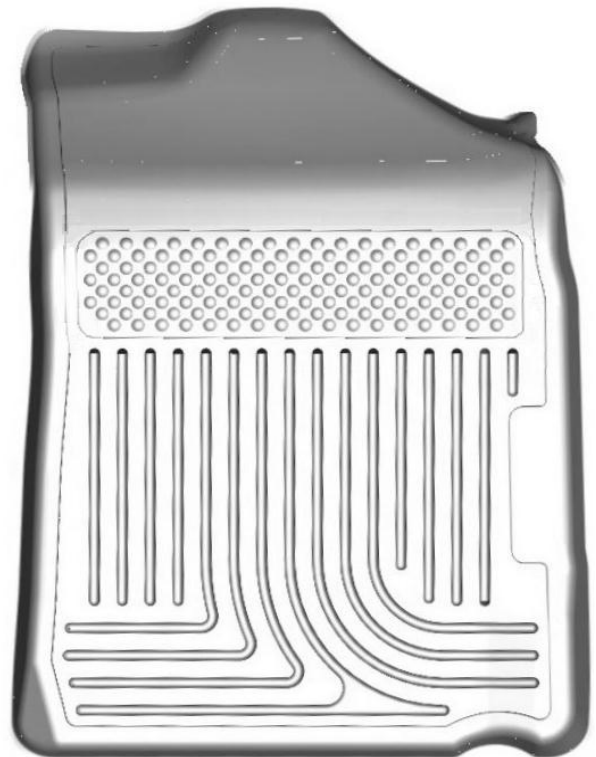
Thank you for selecting a WeatherBeater® Floor Liner from Winfield Consumer Products. Your new front floor liners are custom molded to fit your Toyota Camry. The liners are made to take the place of your factory floor mats. **For correct fit, it is necessary to remove the factory floor mats before installing your new floor liners.** However, do not remove the factory-installed carpeting.

Your liners are made from an engineering resin that is lightweight and extremely tough and durable. The easiest way to clean your liners is with a damp cloth or sponge. If using a cleaner, 409® or Glass Plus® work well. Use of Armor All®, Son-of-a-Gun® or similar items is discouraged as these products make the liners slick.

INSTALLATION INSTRUCTIONS FOR YOUR TOYOTA CAMRY FRONT WeatherBeater™ FLOOR LINERS



LEFT OR DRIVER'S SIDE



RIGHT OR PASSENGER'S SIDE

TO EASE INSTALLATION OF YOUR CAMRY FRONT LINERS, MOVE THE FRONT SEATS TO THEIR MOST REARWARD POSITION. WITH THIS DONE, THE FACTORY CARPET HOOKS LOCATED IN THE CARPET OF THE DRIVER'S SIDE FLOOR CAN BE EASILY REMOVED BY APPLYING FIRM AND EVEN PRESSURE WHILE LIFTING THE END OF THE HOOK ARM STRAIGHT UP. ONCE THE HOOKS ARE REMOVED, INSERT THE PROVIDED HUSKY LINER RETAINING CLIP IN THE FACTORY HOOK LOCATIONS AND INSTALL YOUR LINERS (SEE DETAILED INSTRUCTIONS OF CLIP INSTALLATION ON NEXT PAGE). LASTLY, REPOSITION SEATS AS DESIRED. TO ACCESS THE FUEL DOOR RELEASE LEVER IN YOUR VEHICLE, YOU CAN SIMPLY LIFT UP THE LINER OR YOU CAN TRIM AWAY THE MATERIAL LOCATED DIRECTLY ABOVE THE RELEASE. THE AREA TO BE REMOVED IS LOWERED TO GUIDE TRIMMING.

HUSKY **WeatherBEATER™** **Custom Vehicle Floor Protection**

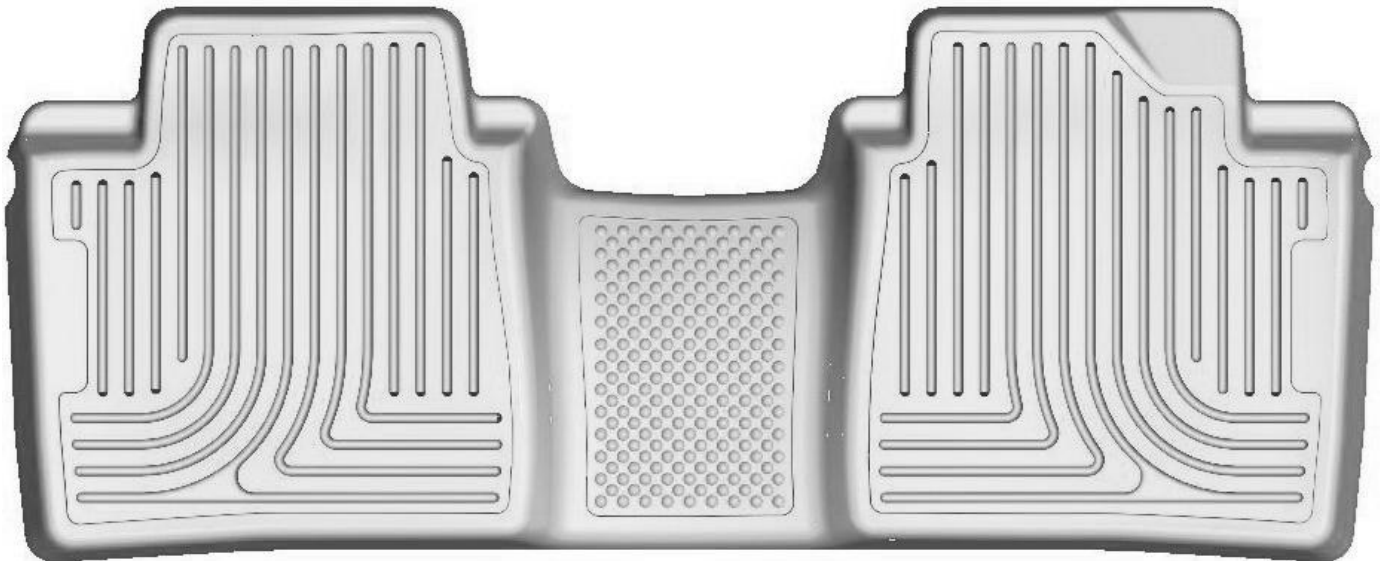
CARE AND USE INSTRUCTIONS

Thank you for selecting a WeatherBeater® Floor Liner from Winfield Consumer Products. Your new rear floor liner is custom molded to fit your Toyota Camry. The liner is made to take the place of your factory floor mats. **For correct fit, it is necessary to remove the factory floor mats before installing your new floor liners.** However, do not remove the factory-installed carpeting.

Your liner is made from an engineering resin that is lightweight and extremely tough and durable. The easiest way to clean your liner is with a damp cloth or sponge. If using a cleaner, 409® or Glass Plus® work well. Use of Armor All®, Son-of-a-Gun® or similar items is discouraged as these products make the liner slick.

INSTALLATION INSTRUCTIONS FOR YOUR TOYOTA CAMRY REAR SEAT WeatherBeater™ FLOOR LINERS

FRONT OF VEHICLE

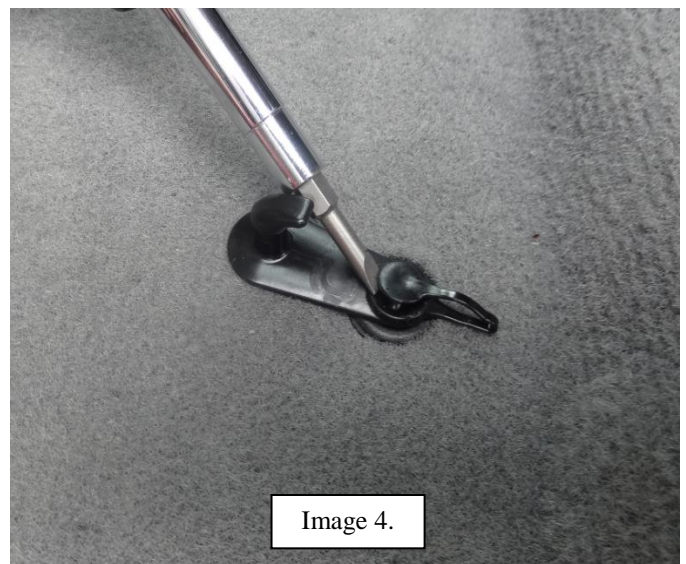
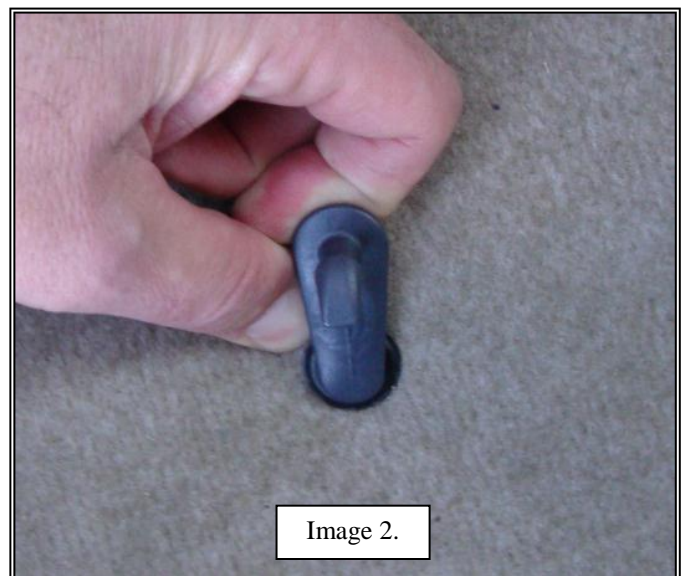


TO EASE INSTALLATION OF YOUR CAMRY SECOND SEAT LINER, MOVE THE FRONT SEATS TO THEIR MOST FORWARD POSITIONS. WITH THIS DONE, INSERT LINER IN VEHICLE ANGLING IT SO THAT THE BACK EDGE OF THE LINER IS SEATED INTO PLACE FIRST, THEN LOWER FRONT PORTION. ONCE LINER IS INSTALLED, REPOSITION THE FRONT SEATS AS DESIRED.

HUSKY FLOOR LINER RETAINING CLIP #1112 INSTALLATION INSTRUCTIONS FOR USE IN VEHICLES WITH REMOVABLE FACTORY MAT HOOKS

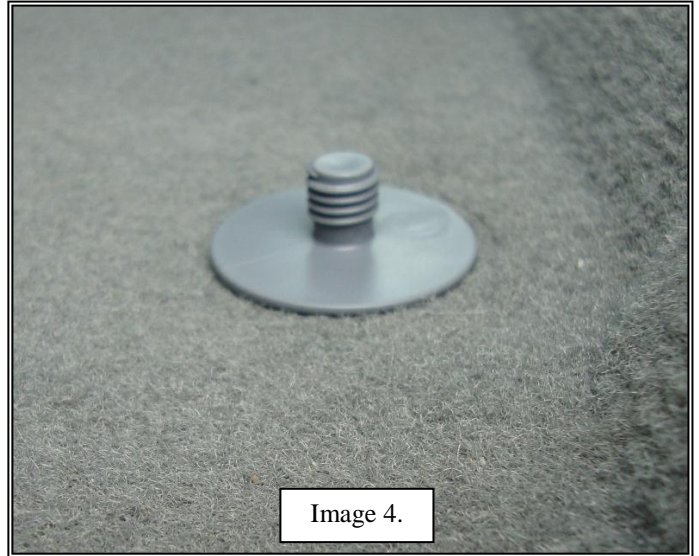
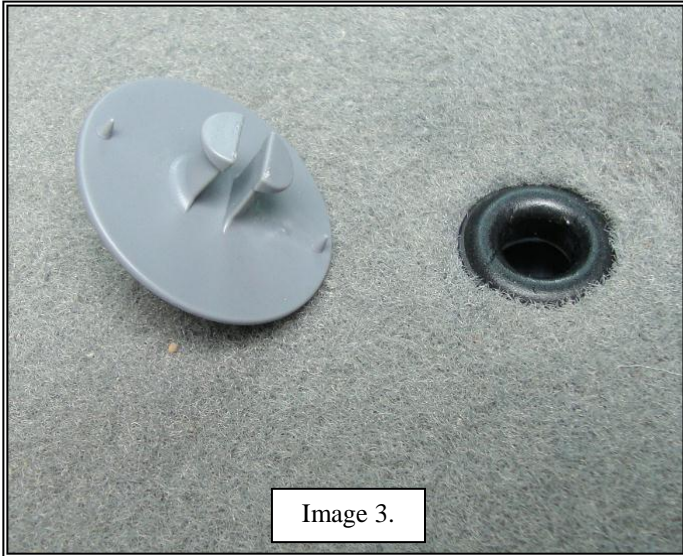
YOUR NEW HUSKY® FLOOR LINER SET INCLUDES OUR NEW PATENT PENDING FLOOR LINER RETAINING CLIP SYSTEM. THIS RETAINING CLIP GIVES THE EXTRA SECURITY PROVIDED BY AN OEM STYLE FASTENER WHILE KEEPING SPILLS AND DEBRIS TRAPPED INSIDE THE LINERS. TO INSTALL THE HUSKY® LINER RETAINING CLIPS, SIMPLY FOLLOW THE INSTRUCTIONS BELOW:

- 1) REMOVE THE EXISTING FACTORY MAT HOOK AS SHOWN IN IMAGE 1 AND IMAGE 2 BELOW. MODERATE EFFORT IS REQUIRED TO POP THE FACTORY HOOKS OUT. NEWER GENERATIONS OF THE FACTORY HOOK HAVE A CENTER SPREADER THAT MUST FIRST BE REMOVED BEFORE THE HOOK WILL RELEASE. SEE IMAGES 3 AND 4 BELOW. ONCE THE SPREADER IS REMOVED, THE HOOK WILL POP OUT JUST AS WITH THE OLDER STYLE HOOKS. YOU CAN WATCH A YOUTUBE VIDEO OF THE HOOK REMOVAL BY ACCESSING THIS LINK-- http://www.youtube.com/watch?v=5P-d_BkQ6Uc.

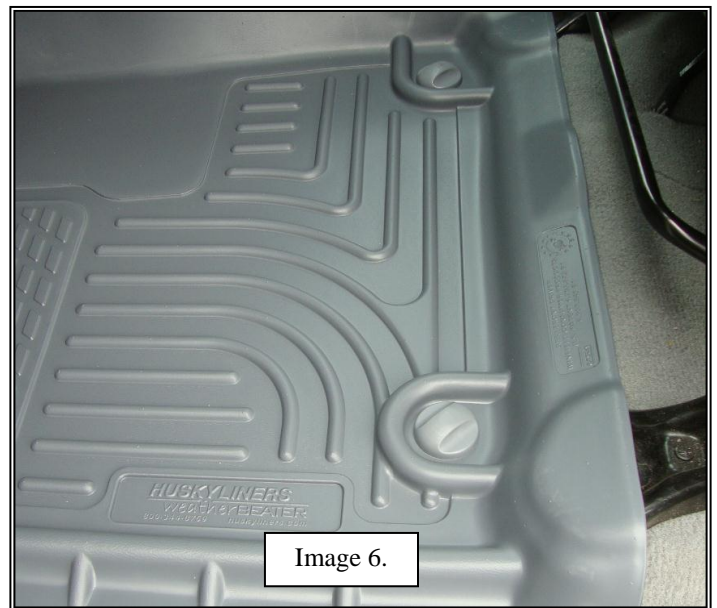


- 2) WITH THE FACTORY CLIPS REMOVED, UNSCREW THE TWO HALVES OF THE HUSKY® RETAINING CLIP AND INSERT THE BOTTOM HALF INTO THE EXISTING FACTORY GROMMETS LOCATION AS SHOWN

BELOW IN IMAGE 4 AND IMAGE 5. THE BOTTOM PORTION WILL “SNAP” SECURELY INTO THE FACTORY GROMMET LOCATION. RETAIN THE TOP HALF OF THE CLIP FOR LATER INSTALLATION.



3) NOW THAT YOU HAVE THE BOTTOM PORTION OF THE RETAINING CLIPS INSTALLED, PLACE THE LINER IN THE VEHICLE TAKING CARE TO ALIGN THE HOLES IN THE LINER WITH THE THREADED PORTION OF THE BOTTOM RETAINING CLIPS AS SHOWN IN IMAGE 5 BELOW. LASTLY, SCREW THE TOP HALF OF THE RETAINING CLIPS ONTO THE TREADED POST OF THE BOTTOM PORTION, SECURING THE LINER IN PLACE AS SHOWN IN IMAGE 6.



IF YOU HAVE ANY QUESTIONS REGARDING THE INSTALLATION OF YOUR HUSKY® LINER RETAINING CLIPS, JUST GIVE US A CALL MONDAY THROUGH FRIDAY FROM 8:00 AM – 5:00 PM CENTRAL TIME AT 800-344-8759 OR E-MAIL US AT: contactus@huskyliners.com.