

# **HUSKY** **Weather** **BEATER**<sup>™</sup> **Custom Vehicle Floor Protection**

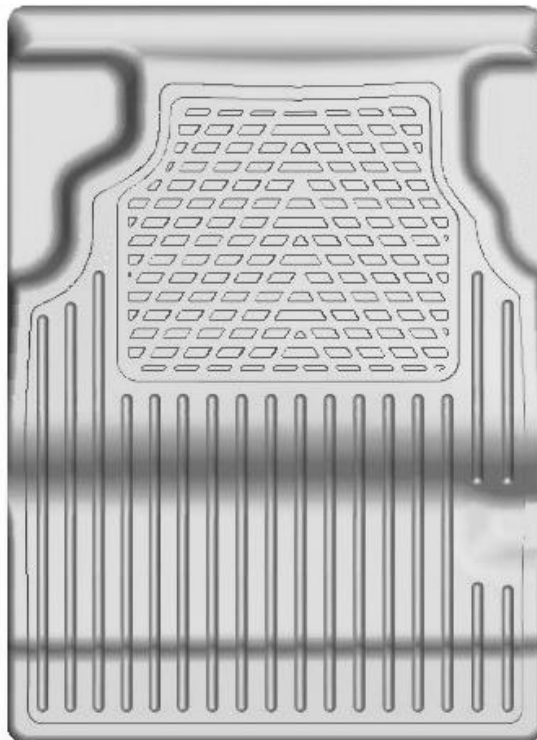
## CARE AND USE INSTRUCTIONS

Thank you for selecting a WeatherBeater® Floor Liner from Winfield Consumer Products. Your new front floor liners are custom molded to fit you're your vehicle. The liner is made to take the place of your factory floor mat (where applicable). **For correct fit, it is necessary to remove any factory floor mat in the mounting location before installing your new floor liners.** However, do not remove the factory-installed carpeting.

Your liner is made from an engineering resin that is lightweight and extremely tough and durable. The easiest way to clean your liner is with a damp cloth or sponge. If using a cleaner, 409® or Glass Plus® work well. Use of Armor All®, Son-of-a-Gun® or similar items is discouraged as these products make the liner slick.

### **INSTALLATION INSTRUCTIONS FOR YOUR ESCALADE / TAHOE YUKON / DENALI CENTER WALKWAY LINER FITS BETWEEN SECOND ROW BUCKET SEATS**

FRONT OF VEHICLE



TO EASE INSTALLATION OF YOUR WALKWAY LINER, FIRST FOLD UP BOTH OF THE 2<sup>ND</sup> ROW SEATS. WITH THIS DONE, YOU CAN EASILY INSTALL LINER POSITIONING IT AS SHOWN ABOVE. ONCE THE LINER IS IN PLACE, THE 2<sup>ND</sup> ROW SEATS CAN BE FOLDED FLAT. NOTE THAT THE LEADING EDGE OF THIS LINER TUCKS BEHIND THE REAR WALL OF THE 2<sup>ND</sup> SEAT LINER.