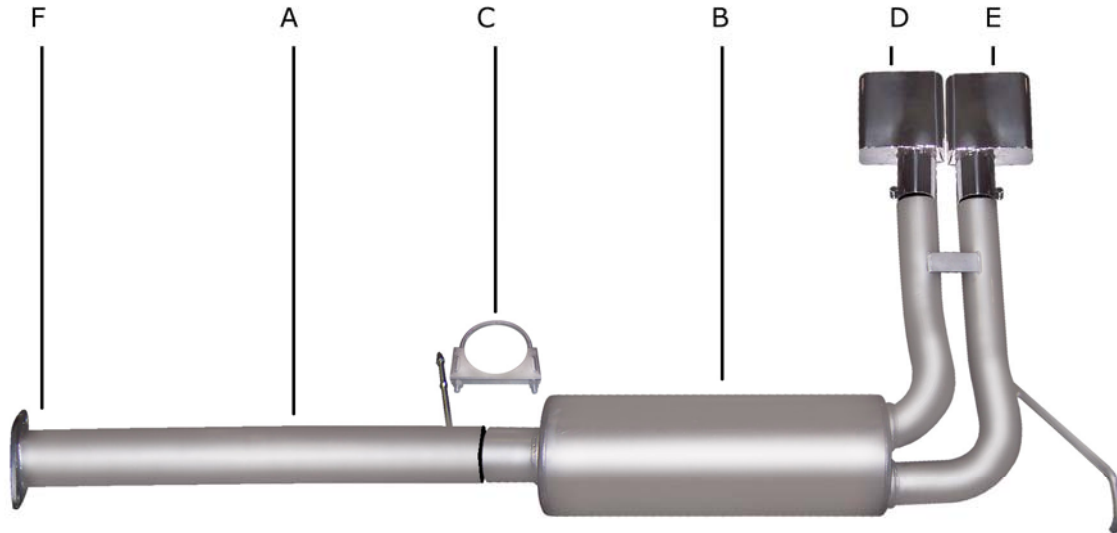




PERFORMANCE EXHAUST SYSTEMS

INSTRUCTION MANUAL
SUPER TRUCK STAINLESS EXHAUST SYSTEM
96-99 CHEVY/GMC 1500 TRUCK 4.3L, 5.0L 2/4WD
EXTENDED CAB, SHORT BED
PART # 65514



ITEM	PART #	QUANTITY	DESCRIPTION
A	806-700333S	1	3" STAINLESS HEADPIPE W/FLANGE GP-305
B	804-700111S	1	STAINLESS MUFFLER ASSEMBLY
C	OHD300	1	3" CLAMP
D	500365	1	SPORT TRUCK STAINLESS TIP
E	500366	1	SPORT TRUCK STAINLESS TIP
F	9688	1	HEADPIPE GASKET

Thank you very much for purchasing our GIBSON PERFORMANCE EXHAUST SYSTEM for your vehicle. If you need further assistance, please do not hesitate to call our Technical Department at (800) 528-3044, Monday through Friday, 8:00 am to 5:00 pm.0806

INSTALLATION INSTRUCTIONS #65514

WHEN INSTALLING THIS EXHAUST SYSTEM, MAKE SURE TO USE PROPER SAFETY PRECAUTIONS. USE JACK STANDS WHEN UNDER THE TRUCK, SET PARKING BRAKE, BLOCK TIRES, AND USE SAFETY GLASSES AND GLOVES. **DO NOT WORK WITH HOT PIPES!**

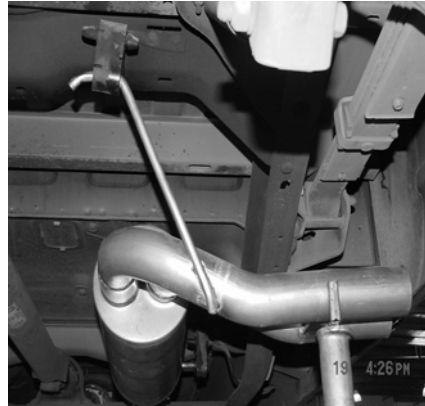
SUGGESTED TOOLS:

HACKSAW, 9/16" SOCKET, 1/2" SOCKET, 1/2" WRENCH, JACKSTAND, WD-40

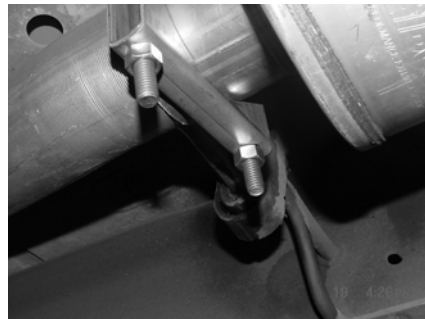
LAYOUT THE EXHAUST AND COMPARE PART NUMBERS WITH THE MANUAL.



TO REMOVE EXHAUST- UNBOLT THE FLANGE LOCATED BEHIND THE CATALYTIC CONVERTER. **SAVE STOCK NUTS AND BOLTS FOR YOU WILL REUSE THEM.** NOW CUT OFF YOUR STOCK TAILPIPE JUST BEHIND THE MUFFLER AND REMOVE. LEAVE ALL RUBBER GROMMETS ON THE HANGER. USE WD-40 TO AID IN THE REMOVAL OF THE EXHAUST AND HANGERS



SLIDE MUFFLER ASSEMBLY #B ONTO HEADPIPE 1-1/2" TO 2". INSERT WELDED HANGER INTO RUBBER GROMMET ON DRIVERSIDE USING CLAMP #C TO SECURE MUFFLER TO HEADPIPE. DO NOT TIGHTEN. USE A JACK STAND TO SUPPORT MUFFLER.



ADJUST MUFFLER ASSEMBLY FOR TAILPIPE EXITS.



BOLT HEADPIPE #A TO STOCK FLANGE USING GASKET # F AND RE-USING STOCK NUTS AND BOLTS. INSERT WELDED HANGER INTO RUBBER GROMMETS.



INSTALL STAINLESS TIPS. TO CLEAN TIPS, USE SCOTCH BRITE PAD AND ANY STAINLESS OR ALUMINUM CLEANER. NOW TIGHTEN ALL BOLTS AND CLAMPS

MAKE SURE YOU HAVE A 1" CLEARANCE ON ALL PIPES FROM ALL BRAKE, FUEL LINES, SHOCKS, TIRES, ETC...