

TOP PLATE  
LOGO PLATE

54491  
54493

2013 HYUNDAI  
SANTA FE SPORT



TOP PLATE  
LOGO PLATE

54491  
54493

2013 HYUNDAI  
SANTA FE SPORT

## 2013 HYUNDAI SANTA FE SPORT

**Main Grille**  
Install time: 45 Mins.

**TOOLS REQUIRED:**

- Flat Screwdriver
- Screwdriver
- 1/16 Drillbit+Drill
- Razor Blade
- Socket Wrench

**PARTS LIST:**

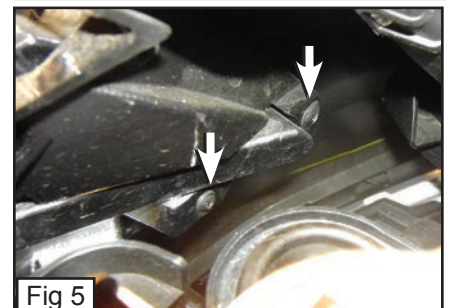
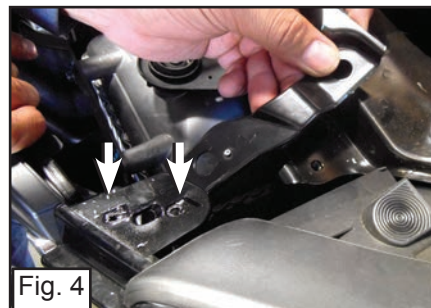
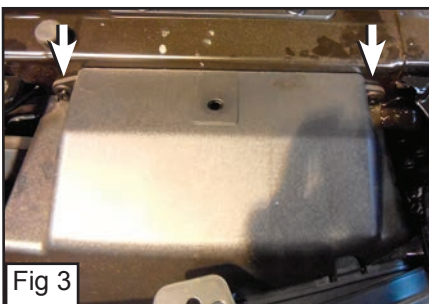
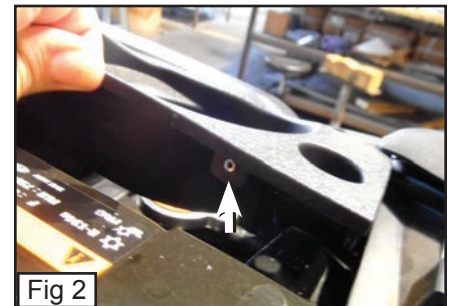
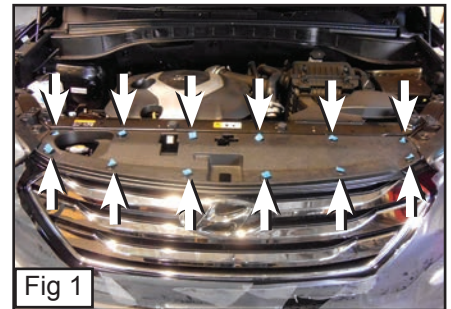
- (1) Main Grille
- (4) L-Brackets
- (7) 6/32 Washers
- (11) 6/32 Nylon Lock Nuts
- (1) Top Plate
- (1) Logo Plate
- (2) 6/32 x 1/2 M-Screws



**PLEASE READ AND UNDERSTAND ALL INSTRUCTIONS BEFORE ATTEMPTING INSTALLATION.**

**Step 1 Factory Grille Removal**

- Remove 12 Clips and Bolts across the top of the Plastic Cover and remove. (Fig. 1)
- With a 1/16 Drillbit, Drill out the Rivets behind the top Corners of the Factory Grille. (Fig. 2)
- Remove the Two Screws that are on the Plastic Box Cover and Remove. (Fig. 3)
- Remove two Rivets that are on the Top Corner of the Factory Grille Shell (Repeat for other side). (Fig. 4)
- Behind the Grille, There will be 4 Screws along the Top of the Factory Grille and 2 Screws along the Bottom of the Grille, Remove these Screws. (Fig. 5)
- There will be Clips along the Bottom of the Grille, Depress these clips and Carefully Remove the Factory Grille. (Fig. 6)
- With a Razor Blade Remove the Long Tab for the Hyundai Logo. (Don't cut too short to the Factory Shell but just enough so that you wont be able to see it when you Install the Mesh Grille.) (Fig. 7+8)



**54491**  
**54493**



**54491**  
**54493**  
**2013 HYUNDAI**  
**SANTA FE SPORT**

## **2013 HYUNDAI SANTA FE SPORT**

### **Main Grille**

**Install time: 45 Mins.**

- Place the Logo Plate onto the Factory Logo. (Fig. 9)
  - Insert the M-Screws through the holes that are on the Logo Plate to Attach the Factory Logo in Place. (Fig. 10)
  - Place the Logo onto the Mesh Grille. (Fig. 11)
  - From behind the Grille, Insert a Washer and Nylon Lock Nut onto the Threaded Studs that's on the Logo Plate. (Fig. 12)
  - Place the Top Plate on the Mesh Grille and Insert a Washer and Nylon Lock Nut onto each Stud. (Fig. 13)
  - Place the Mesh Grille through the Factory Grille Opening. (Fig. 14)
  - Place L-Brackets on the Studs along the Bottom of the Mesh Grille and Place a Nylon Lock Nut. (Fig. 15)
- Place back the Factory Top Cover and Clips. (The Factory Clips will go through the Top Plate to hold the Grille in Place.)

### **INSTALLATION COMPLETE**

