

T-REX

Billet Grilles

20759

07-08 NISSAN
SENTRA

20759

07-08 NISSAN
SENTRA

BILLET INSERT

Tools Required:

Slotted Screwdriver
Phillips Screwdriver
5/16" Wrench

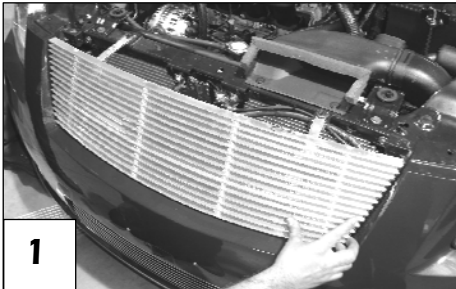
Part List:

1 Billet Insert	2 6-32 x 1.5" Machine Screws
2 #8 x 1 Screws (#6 Head)	2 6-32 Nylon Lock Nuts
2 #8 U-Nuts	1 Extension Bracket (Short)
2 ½ x ½ L Brackets	1 Extension Brackets (Long)

Read and understand instructions before attempting installation

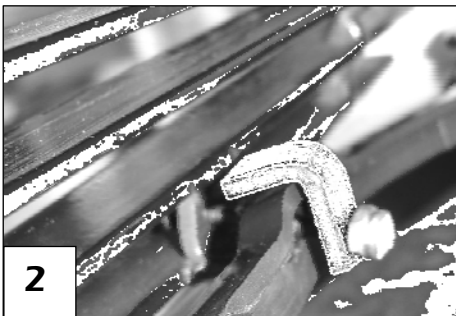
Step 1.

Remove the factory grille shell; use a screwdriver to unscrew the plastic fasteners along the top of the grille. Next, lightly pull the top of the grille assembly forward; use a slotted screwdriver to depress the clips on each end of the grille. Use your fingers to depress the molded clips along the bottom of the grille; remove the grille. If a bumper grille has been purchased, install at this time.



Step 2.

Slide the u-nuts over the small hole in the extension brackets. These brackets attach the top of the grille to the factory mounting holes in the core support (1). Attach the longer extension bracket on the passenger side. Use the #8 x 1 screw to attach the u-nut side of the bracket. Now attach the shorter bracket on the other side.



Step 3.

Center the billet into the opening (1). The lower tabs welded to the grille align to factory mounting holes. Insert a machine screw into each tab. From the back; slide a short L bracket on each screw (2); secure the brackets with the lock nuts provided (2).

Step 4.

Attach the upper mounting brackets to the core support using the factory grille fasteners. Close the hood and check the alignment of the billet insert. If necessary, remove the insert and adjust the brackets. ***Thank you for purchasing a T-Rex Billet Grille. 2/2/07***

