

T-REX

Billet Grilles

20649

2008 FORD
ESCAPE

20649

2008 FORD
ESCAPE

BILLET INSERT

Tools Required:

Phillip Screw Driver
8mm, 10mm Socket or wrench

Hardware / Parts List:

2 Billet Inserts
4 1.5" Screw
4 2" Flange Brackets
4 U Nuts

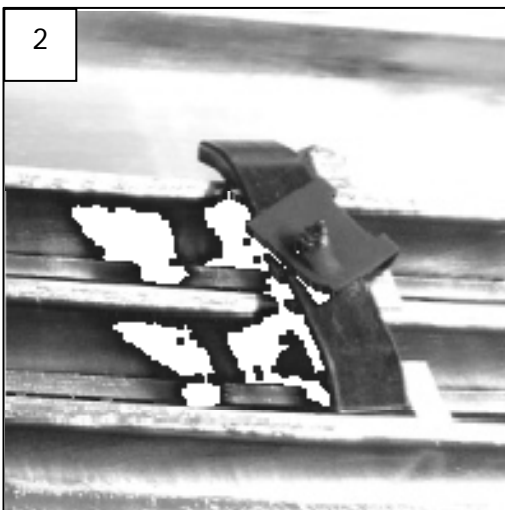
Read and understand instructions before attempting installation



Step 1

Remove the two 10mm bolts on top of the grille shell. On the bottom of the grille there are 2 more 10mm nuts which need to be removed. On each side of the grille there is an 8mm bolt. These bolts need to be removed also. Unclip the 4 clips on the bottom of the grille and remove the grille shell [1].

If you purchased the lower bumper grille, install now.



Step 2

Install the top billet into the grille shell. From the front side of grille, place a screw through the bracket in the grille. Place a u clip on the flange bracket. From the back side of the grille, place the flange bracket onto the screw [2]. Repeat the on the other side. Center the grille and tighten. Proceed to repeat this on the lower grille.

Thank you for purchasing your T-Rex billet grille
11/19/07