



EZ - Ride Suspension

Installation manual

Dual stabilizer kit

2008 - 2011 Dodge Ram 2500/3500

Part # 66397

sj10052011rev.02

Part # 66397

2008 - 2011 Dodge Ram 2500/3500

Dual stabilizer kit

| <u>Part #</u> | <u>Description</u> | <u>Qty.</u> |
|---------------|-------------------------------------|-------------|
| 66397-01 | Center bracket | 1 |
| 66397-02 | Driver side outer bracket | 1 |
| 66397-03 | Passenger side outer bracket | 1 |
| 66397NB | Hardware bag | 1 |
| 5U-123785R | 1/2" x 3 7/8" x 5" round u-bolt | 2 |
| 66395-04 | Cylinder | 2 |
| SX5000 | Stabilizer sticker | 2 |
| 66397INST | Instruction manual (customer copy) | 1 |
| 66397INST | Instruction manual (installer copy) | 1 |
| MIRRORHANGER | Rear view mirror hanger | 1 |
| WARNINGDECAL | Warning decal | 1 |

Congratulations on your selection to purchase a Tuff Country EZ-Ride Suspension System. We at Tuff Country EZ-Ride Suspension are proud to offer a high quality product at the industries most competitive pricing. Thank you for your confidence in us and our product.

If you desire to return your vehicle to stock, it is the customers responsibility to save all stock hardware.

The Tuff Country EZ-Ride Suspension product safety label that is included in your kit box must be installed inside the cab in plain view of all occupants.

Important customer information:

Tuff Country EZ-Ride Suspension highly recommends that a qualified or a certified mechanic performs this installation.

It is the responsibility of the customer/installer to wear safety glasses at all times when performing this installation.

It is the customers/installers responsibility to read and understand all steps before installation begins. If you have any questions or concerns, please contact our technical department @ (801) 280-2777. Also, the OEM manual should be used as a reference guide.

This vehicles reaction and handling characteristics may differ from standard cars and/or trucks. Modifications to improve and/or enhance off road performance may raise the intended center of gravity. Extreme caution must be utilized when encountering driving conditions which may cause vehicle imbalance or loss of control. DRIVE SAFELY! Avoid abrupt maneuvers: such as sudden sharp turns which could cause a roll over, resulting in serious injury or death.

It is the customers responsibility to make sure that a re-torque is performed on all hardware associated with this suspension system after the first 100 miles of installation. It is also the customers responsibility to do a complete re-torque after every 3000 miles or after every off road use.

After the original installation, Tuff Country EZ-Ride Suspension also recommends having the alignment checked every 6 months to ensure proper tracking, proper wear on tires and front end components. Tuff Country EZ-Ride Suspension takes no responsibility for abuse, improper installation or improper suspension maintenance.

Limited lifetime warranty

Notice to all Tuff Country EZ-Ride Suspension customers: It is your responsibility to keep your original sales receipt! If failure should occur on any Tuff Country EZ-Ride Suspension component, your original sales receipt must accompany the warranted unit to receive warranty. Warranty will be void if the customer can not provide the original sales receipt. Do not install a body lift in conjunction with a suspension system. If a body lift is used in conjunction with any Tuff Country EZ-Ride Suspension product, your Tuff Country EZ-Ride Suspension WARRANTY WILL BE VOID. Tuff Country Inc. ("Tuff Country") suspension products are warranted to be free from defects in material and workmanship for life if purchased, installed and maintained on a non-commercial vehicle; otherwise, for a period of twelve (12) months, from the date of purchase and installation on a commercial vehicle, or twelve thousand (12,000) miles (which ever occurs first). Tuff Country does not warrant or make any representations concerning Tuff Country Products when not installed and used strictly in accordance with the manufacturer's instructions for such installation and operation and accordance with good installation and maintenance practices of the automotive industry. This warranty does not apply to the cosmetic finish of Tuff Country products nor to Tuff Country products which have been altered, improperly installed, maintained, used or repaired, or damaged by accident, negligence, misuse or racing. ("Racing is used in its broadest sense, and, for example, without regards to formalities in relation to prizes, competition, etc.) This warranty is void if the product is removed from the original vehicle and re-installed on that or any other vehicle. This warranty is exclusive and is in lieu of any implied warranty of merchantability, fitness for a particular purpose or other warranty of quality, whether express or implied, except the warranty of title. All implied warranties are limited to the duration of this warranty. The remedies set forth in this warranty are exclusive. This warranty excludes all labor charges or other incidental of consequential damages. Any part or product returned for warranty claim must be returned through the dealer of the distributor from whom it was purchased. Tuff Country reserves the right to examine all parts returned to it for warranty claim to determine whether or not any such part has failed because of defect in material or workmanship. The obligation of Tuff Country under this warranty shall be limited to repairing, replacing or crediting, at its option, any part or product found to be so defective. Regardless of whether any part is repaired, replaced or credited under this warranty, shipping and/or transportation charges on the return of such product must be prepaid by the customer under this warranty.

Important information that needs to be read before installation begins:

This dual in-line stabilizer kit will only work on vehicles that have a 4.5" - 6" suspension lift installed on it. If the vehicle that you are working on does not have a 4.5" - 6" suspension lift on it, STOP and do not install on your vehicle. Please contact the company and return the kit who you purchased it from. If installed, damage will occur to the stabilizers and your warranty will be VOID.

Tuff Country EZ-Ride Suspension packages (2) sets of instruction sheets with this box kit. (1) is for the installer and (1) is for the customer. The (1) for the customer has some post installation procedure literature and it is the installers responsibility to make sure that the customer receives a copy of the installation manual along with the literature.

Before installation begins, Tuff Country EZ-Ride Suspension highly recommends that the installer performs a test drive on the vehicle. During the test drive, check to see if there are any uncommon sounds or vibrations. If uncommon sounds or vibrations occur on the test drive, uncommon sounds or vibrations will be enhanced once the suspension system has been installed. Tuff Country EZ-Ride Suspension highly recommends notifying the customer prior to installation to inform the customer of these issues if they exist.

Make sure to use thread locker or loctite on all new and stock hardware associated with the installation of this suspension system.

Special note: Before installation begins, it is the customers/installers responsibility to make sure that all parts are on hand. If any parts are missing, please feel free to call one of our customer service representatives @ (801) 280-2777.

Hardware bag 66397NB includes:

| <u>Description</u> | <u>Quantity</u> |
|---|-----------------|
| P19(universal shock bolt) | 4 |
| 5U-5161122316R | |
| (5/16" x 1 1/2" x 2 3/16" round u-bolt) | 4 |
| 516FLN (5/16" flange lock nut) | 8 |
| 12HN (1/2" u-bolt high nut) | 4 |
| SUW-12 (1/2" harden u-bolt washer) | 4 |

Recommended tools selection:

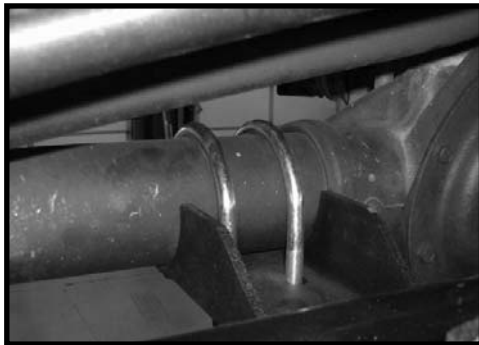
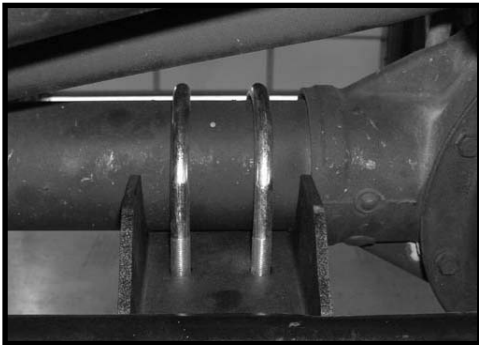
Torque wrench
Standard socket set
Standard wrench set
Metric socket set
Metric wrench set
Tape measure

Please follow instructions carefully:

Place the vehicle on a flat surface and make sure that the steering wheel is centered. Block the front and rear tires so the vehicle is stable and can not roll forward or backward.

Stabilizer installation:

1. Locate the new center bracket and (2) 1/2" x 3 7/8" x 5" round u-bolts. Also, locate (4) 1/2" u-bolt high nuts and (4) 1/2" harden u-bolt washers from hardware bag 66397NB. Install the new center stabilizer bracket to the front axle and secure using the new u-bolts and hardware. **Special note: Push the bracket towards the driver side until it sits flush with the flange on the front differential. Make sure to use thread locker or loctite and torque to 65 ft lbs. Also, make sure that there is clearance between the new bracket and the tie rod. If clearance is an issue, loosen up the u-bolts and lower the front portion of the bracket until there is clearance then tighten the u-bolts to 65 ft lbs.**



2. Locate the new driver side outer bracket. Also, locate (2) 5/16" x 1 1/2" x 2 3/16" round u-bolts and (4) 5/16" flange lock nuts from hardware bag 66397NB. Install the new driver side outer bracket to the bottom side of the tie rod and secure using the new u-bolts and hardware. The legs of the new u-bolts will be going downward. **Make sure to use thread locker or loctite and torque to 12 ft lbs. Special note: Make sure to slide the new bracket to the driver side until it sits flush with the adjuster sleeve.**

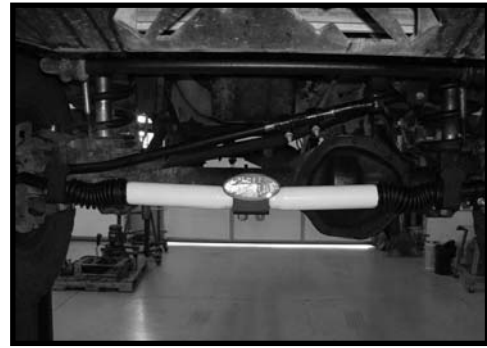
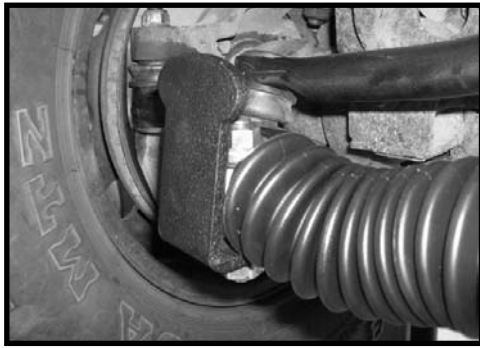
3. Locate the new passenger side outer bracket. Also, locate (2) 5/16" x 1 1/2" x 2 3/16" round u-bolts and (4) 5/16" flange lock nuts from hardware bag 66397NB. Install the new passenger side outer bracket to the bottom side of the tie rod and secure using the u-bolts and hardware. The legs of the new u-bolts will be going downward. **Make sure to use thread locker or loctite and torque to 12 ft lbs. Special**

note: Measure from the center of the center stabilizer bracket to the center of the driver side outer bracket and make sure that you have the same measurement on the passenger side. If needed, move the bracket so that the driver and passenger side brackets have the same measurement.

4. Locate (4) P19 universal shock bolts from hardware bag 66397NB. Install (2) universal shock bolts to the center stabilizer bracket and secure using the new hardware. Make sure to use thread locker or loctite and torque to **65 ft lbs.** Install (1) universal shock bolt to the driver side outer bracket and secure using the new hardware. Make sure to use thread locker or loctite and torque to **65 ft lbs.** Now install (1) universal shock bolt to the passenger side outer bracket and secure using the new hardware. Make sure to use thread locker or loctite and torque to **65 ft lbs. Special note: Set the extra hardware that was packaged in the P19 kits aside. They will be used to attach the stabilizers to the newly installed P19's.**

5. Locate the new cylinders. Install the new shock boots onto the new cylinders. **Special note: shocks boots are not included with the dual stabilizer kit and need to be ordered as a separate part number. If you have not already ordered your new shock boots, please contact Tuff Country or your local Tuff Country dealer and order your new shock boots.** Using the left over hardware that was packaged in the P19 kits, secure the new stabilizers to the center bracket and the driver and passenger side outer brackets. Make sure to use thread locker or loctite and torque to **50 ft lbs. Special note: Tuff Country recommends that the body of the cylinders are installed to the center bracket.**





6. Once the cylinders have been installed, turn the steering wheel all the way to the driver and passenger side to make sure that there is no binding and also make sure that there is the same amount of turning radius on the driver and passenger side.

Congratulations, installation complete!

Special note: After the completion of the installation, Tuff Country EZ-Ride Suspension recommends taking the vehicle to an alignment shop and having a proper front end alignment performed.

Tuff Country EZ-Ride Suspension recommends that a complete re-torque is done on all bolts associated with this suspension system. It is the customers responsibility to make sure that a re-torque is performed on all hardware associated with this suspension system after the first 100 miles of installation. It is also the customers responsibility to do a complete re-torque after every 3000 miles or after every off road use. Neglect of following these steps could cause brackets to come loose and cause serious damage to the suspension system and to the vehicle.

Tuff Country EZ-Ride Suspension packages (2) sets of instruction sheets with this box kit. (1) is for the installer and (1) is for the customer. The (1) for the customer has some post installation procedure literature and it is the installers responsibility to make sure that the customer receives a copy of the installation manual along with the literature.

If you have any questions or concerns, please feel free to contact Tuff Country or your local Tuff Country dealer.