



**Installation Manual
2" Lift Kit
2014 - Current Jeep Cherokee (KL)
Part # 42103**
SS04222019

Part # 42103
2014 - Current
Jeep Cherokee (KL)
*Does NOT fit 2019 Trailhawk models

Part #	Description	Qty.
42103-01	Driver side outer strut bracket	1
42103-02	Driver side inner strut bracket	1
42103-03	Passenger side outer strut bracket	1
42103-04	Passenger side inner strut bracket	1
42103-05	Rear coil spring spacer	2
42103NB	Hardware bag	1
42103INST	Instruction manual	1

Congratulations on your selection to purchase a Tuff Country EZ-Ride Suspension System. We at Tuff Country EZ-Ride Suspension are proud to offer a high quality product at the industries most competitive pricing. Thank you for your confidence in us and our product.

The Tuff Country EZ-Ride Suspension product safety label that is included in your kit box must be installed inside the cab in plain view of all occupants.

For a list of parts, please refer to the back of the installation manual for photos of parts that are included in this suspension system.

Make sure to use thread locker or loctite on all new and stock hardware associated with the installation of this suspension system.

After the completion of this installation a professional alignment is required.

Important customer information:

Tuff Country EZ-Ride Suspension highly recommends that a qualified or a certified mechanic performs this installation.

It is the responsibility of the customer/installer to wear safety glasses at all times when performing this installation.

It is the customers/installers responsibility to read and understand all steps before installation begins. If you have any questions or concerns, please contact our technical department @ (801) 280-2777. Also, the OEM manual should be used as a reference guide.

This vehicles reaction and handling characteristics may differ from standard cars and/or trucks. Modifications to improve and/or enhance off road performance may raise the intended center of gravity. Extreme caution must be utilized when encountering driving conditions which may cause vehicle imbalance or loss of control. **DRIVE SAFELY!** Avoid abrupt maneuvers: such as sudden sharp turns which could cause a roll over, resulting in serious injury or death.

It is the customers responsibility to make sure that a re-torque is performed on all hardware associated with this suspension system after the first 100 miles of installation. It is also the customers responsibility to do a complete re-torque after every 3000 miles or after every off road use.

After the original installation, Tuff Country EZ-Ride Suspension also recommends having the alignment checked every 6 months to ensure proper tracking, proper wear on tires and front end components. Tuff Country EZ-Ride Suspension takes no responsibility for abuse, improper installation or improper suspension maintenance.

Limited lifetime warranty

Notice to all Tuff Country EZ-Ride Suspension customers: It is your responsibility to keep your original sales receipt! If failure should occur on any Tuff Country EZ-Ride Suspension component, your original sales receipt must accompany the warranted unit to receive warranty. Warranty will be void if the customer can not provide the original sales receipt. Do not install a body lift in conjunction with a suspension system. If a body lift is used in conjunction with any Tuff Country EZ-Ride Suspension product, your Tuff Country EZ-Ride Suspension WARRANTY WILL BE VOID. Tuff Country Inc. ("Tuff Country") suspension products are warranted to be free from defects in material and workmanship for life if purchased, installed and maintained on a non-commercial vehicle; otherwise, for a period of twelve (12) months, from the date of purchase and installation on a commercial vehicle, or twelve thousand (12,000) miles (which ever occurs first). Tuff Country does not warrant or make any representations concerning Tuff Country Products when not installed and used strictly in accordance with the manufacturer's instructions for such installation and operation and accordance with good installation and maintenance practices of the automotive industry. This warranty does not apply to the cosmetic finish of Tuff Country products nor to Tuff Country products which have been altered, improperly installed, maintained, used or repaired, or damaged by accident, negligence, misuse or racing. ("Racing is used in its broadest sense, and, for example, without regards to formalities in relation to prizes, competition, etc.) This warranty is void if the product is removed from the original vehicle and re-installed on that or any other vehicle. This warranty is exclusive and is in lieu of any implied warranty of merchantability, fitness for a particular purpose or other warranty of quality, whether express or implied, except the warranty of title. All implied warranties are limited to the duration of this warranty. The remedies set forth in this warranty are exclusive. This warranty excludes all labor charges or other incidental or consequential damages. Any part or product returned for warranty claim must be returned through the dealer of the distributor from whom it was purchased. Tuff Country reserves the right to examine all parts returned to it for warranty claim to determine whether or not any such part has failed because of defect in material or workmanship. The obligation of Tuff Country under this warranty shall be limited to repairing, replacing or crediting, at its option, any part or product found to be so defective. Regardless of whether any part is repaired, replaced or credited under this warranty, shipping and/or transportation charges on the return of such product must be prepaid by the customer under this warranty.

Important information that needs to be read before installation begins:

Tuff Country developed this suspension system using a 245/70R17 on OE 17" wheels for all AD1 models. If wider tires are used, trimming WILL be required.

Trailhawk and/or AD2 models have factory wheels with less offset and can run a 255/70R17 tire on OE 17" wheels. Can run up to 32" tall tires when the fenders are trimmed.

Before installation begins, Tuff Country EZ-Ride Suspension highly recommends that the installer performs a test drive on the vehicle. During the test drive, check to see if there are any uncommon sounds or vibrations. If uncommon sounds or vibrations occur on the test drive, uncommon sounds or vibrations will be enhanced once the suspension system has been installed. Tuff Country EZ-Ride Suspension highly recommends notifying the customer prior to installation to inform the customer of these issues if they exist.

This Suspension kit comes with (1) installation manual and some post installation procedure literature and it is the installers responsibility to make sure that the customer receives the post installation procedure literature. If a customer would like a copy of the installation manual, please have them visit our website at www.tuffcountry.com. Have them go to the customer care section to download these instructions. If you have any questions, please feel free to call us at (801) 280-2777.

Hardware bag 42103NB includes:

<i>Part #</i>	<i>Description</i>	<i>Qty.</i>
7163B	7/16" x 3" bolt	2
38WA	3/8" uss flat washer	4
716UN	7/16" unitorque nut	2
916112B	9/16" x 1 1/2" bolt	4
12WASAE	1/2" SAE washer	8
916UN	9/16" unitorque nut	4
N101116SHB	#10-24 x 11/16" hex head bolt	2

Recommended tools selection:

Drill
15/32" drill bit
E14 socket (external Torx socket)
Torque wrench
Standard socket set
Standard wrench set
Metric socket set
Metric wrench set
Tape measure
Hydraulic floor jacks

Please follow instructions carefully:

Before installation begins, measure from the center of the hub, to the bottom of the fender well, and record measurements below.

Pre-installation measurements:

Driver side front: _____
Passenger side front: _____
Driver side rear: _____
Passenger side rear: _____

At the end of the installation take the same measurements and compare to the pre-installation measurements.

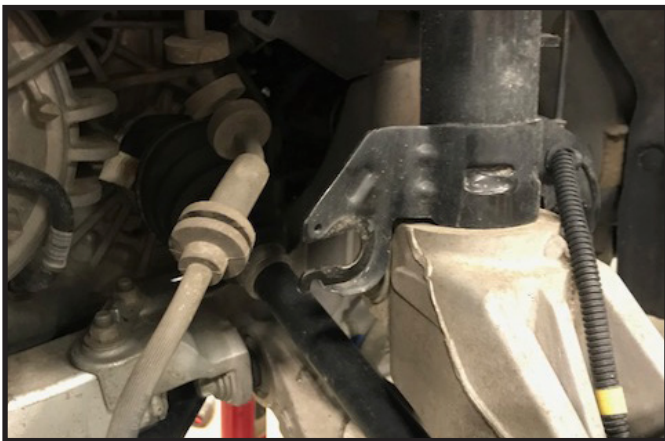
Post installation measurements:

Driver side front: _____
Passenger side front: _____
Driver side rear: _____
Passenger side rear: _____

Front end installation:

1. To begin installation, block the rear tires of the vehicle so that the vehicle is stable and can't roll backwards. Safely lift the front of the vehicle and support the frame with a pair of jack stands. Place a jack stand on both the driver and passenger side. Next, remove the wheels and tires from both sides.

2. Working on the driver side, remove the brake line from the strut mount.



3. Remove the sway bar endlink from the strut mount. Use a 5mm Allen wrench to hold the stud from turning.



4. Using an E14 socket and an 18mm wrench, remove the knuckle pinch bolt that clamps the knuckle to the strut. An 11mm 12 point socket can also be used if you are careful.



5. Remove the ABS wire from the strut mount and carefully move the ABS wire out to the side.



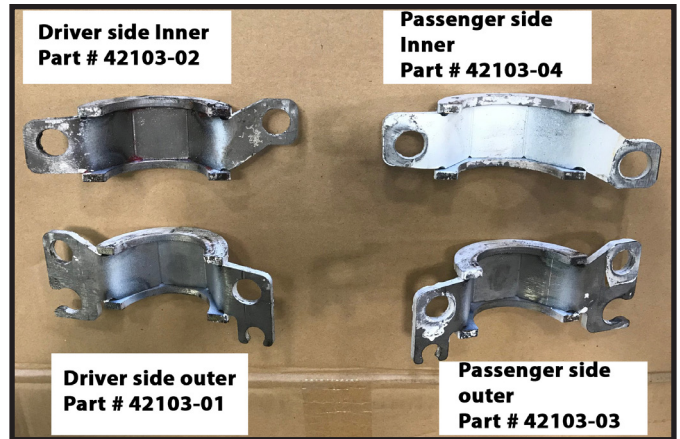
6. Using a dead blow hammer, carefully hit the top of the knuckle until it has slipped down approximately 1 5/8".



7. Apply grease to the exposed strut body above the knuckle to help with the installation of the new spacers.



8. Locate the correct strut spacer halves according to the photo below. **Special note: The install photos we have used here, are of the passenger side.**



9. Install the inner most spacer first by installing it from the back of the strut, be sure that the spacer aligns with the factory bracket that previously held the brake line and ABS wire



10. Install the outer spacer and ensure all holes align with the inner spacer and factory bracket. The upper and lower "C" shaped pieces should contract each other after wrapping around the body of the strut.



11. Locate (2) 9/16" x 1 1/2" bolts, (4) 1/2" SAE washers, and (2) 9/16" unitorque nuts from hardware bag 42103NB. Install the new hardware into the new strut spacers and torque to 125 ft lbs.



12. Install the OE brake line and ABS wire into the slots of the new strut spacer pieces.



13. Place a jack under the lower control arm and lift the lower control arm up to ensure the strut has completely seated into the steering knuckle. Make sure there is no gap between the factory bracket and the supplied strut spacers.

14. Using a drill with a 15/32" drill bit, carefully drill the knuckle pinch hole out all the way through.



15. Locate and install the new 7/16" x 3" bolt, (2) 3/8" washers, and 7/16" unitorque nut. Torque to 55 ft lbs.



16. Re-install the swaybar end link using the OE hardware.

17. Remove the jack from the lower control arm.

Repeat Steps 2 - 17 on the passenger side of the vehicle.

18. Install the tires and wheels and lower the vehicle back down to the ground. Follow the vehicle manufacturer or wheel manufacturer torque specs for the lug nuts.

Front Installation Complete.

Rear Installation:

19. To begin installation, block the front tires of the vehicle so that the vehicle is stable and can't roll. Safely lift the rear of the vehicle and support the frame with a pair of jack stands. Place a jack stand on both the driver and passenger side. Next, remove the wheels and tires from both sides.

20. Remove the sway bar end link from the sway bar. Use a 5mm Allen wrench with a 15mm wrench.

21. Working on the driver side, re-attach the new upper control arm to the steering knuckle using the new castle nut and cotter pin. torque to **90 ft lbs**. Repeat procedure on passenger side.



22. Place a jack under the lower control arm, raise the jack up until there is light pressure on the lower control arm but not raising the vehicle. Remove the lower control arm bolt that attaches to the knuckle.

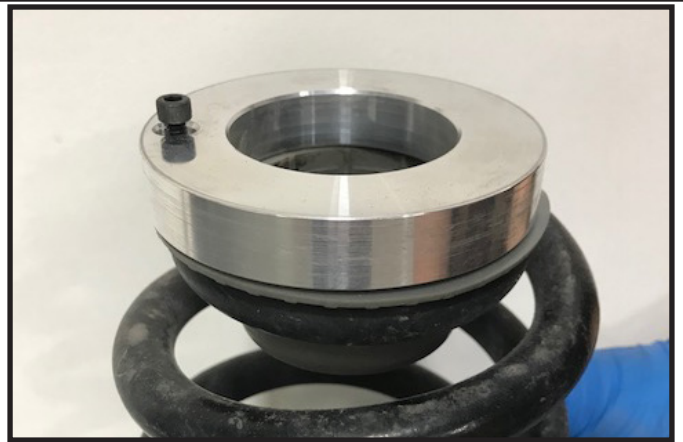


23. Slowly and carefully lower the jack so that the lower control arm drops down enough to remove the rear coil spring.

24. Locate the new #10 bolt from hardware bag 42103NB. Install this bolt into the OE lower coil spring isolator locating dowel. **This #10 bolt is just a “push in by hand” install.**



25. Install the new rear coil spacer by placing it over the locating dowel on the lower coil spring isolator so that the #10 bolt peeks through.



26. Locate the small locating hole in the lower control arm, and install the new coil spring spacer/OE isolator/coil spring assembly so that the #10 bolt falls into the locating hole on the lower control arm.



27. Once all the components are properly aligned, use a jack to raise the lower control arm up and re-install the lower control arm hardware to the knuckle.

28. Re-attach the sway bar endlink to the sway bar using OE hardware.

Repeat steps 20 - 28 on the passenger side of the vehicle.

29. Install the tires and wheels, and carefully lower the vehicle back to the ground. Torque the lug nuts according to the vehicle/wheel manufacturer specs.

30. If your vehicle requires trimming on the front fenders to clear your tire and wheel choice, please refer to the photos at the end of this manual as a reference guide. **Special note: this is only a guide, some vehicles and tire/wheel combos may need additional trimming.**

Installation Complete!

Check and double check to make sure that all steps were performed properly. After the completion of this install, Tuff Country Recommends taking the vehicle in

for a complete vehicle alignment.

Tuff Country EZ-Ride Suspension recommends that a complete re-torque is done on all bolts associated with this suspension system. It is the customers responsibility to make sure that a re-torque is performed on all hardware associated with the system after the first 100 miles of installion. It is also the Customers responsibility to do a complete re-torque after every 3,000 miles or after every off road use. Neglect of following these steps could cause brackets to come loose and cause serious damage to the suspension system and to the vehicle.

