



Installation Manual

2019 Ram 1500 4wd

2" front leveling kit

Part # 32105

SS09062018

Part # 32105
2019 Ram 1500 4wd (will not fit Air ride models)
2" front leveling kit

Part #	Description	Qty.
32105-01	Aluminum Strut spacer	2
32105INST	Instruction Manual	1

Congratulations on your selection to purchase a Tuff Country EZ-Ride Suspension System. We at Tuff Country EZ-Ride Suspension are proud to offer a high quality product at the industries most competitive pricing. Thank you for your confidence in us and our product.

The Tuff Country EZ-Ride Suspension product safety label that is included in your kit box must be installed inside the cab in plain view of all occupants.

Make sure to use thread locker or loctite on all new and stock hardware associated with the installation of this suspension system.

After the completion of the installation, a front end alignment is required.

Please be aware that some Dodge Ram owners may experience a vibration in the front end or a violent shaking vibration of the front wheels when going over a bump at certain speeds. This is due to the front differential and suspension when Dodge Ram trucks are in 4x4 mode. These two symptoms are often lumped together and called a "steering oscillation" however it is actually two different problems with the Ram Truck. The 4HI mode vibration is a vibration or shudder that occurs when accelerating in 4x4 high mode. This symptom appears isolated to 1500 non-Mega Cab model trucks and only when in 4-hi mode. Dodge could not discover why their stock trucks would do this for some customers and not others, so the final official statement from Dodge was that there is no problem and that all of the new Rams will shudder or shake when in 4x4 high.

Therefore, after installing this kit on your Dodge Ram truck, if you experience either of the two symptoms mentioned above, Tuff Country recommends two

options. 1). Remove the kit from the vehicle and send it back to the company you purchased it from for a full refund or 2). Install High angle CV joints that will stabilize the factory vehicles issues. Important customer information:

Important customer information:

Tuff Country EZ-Ride Suspension highly recommends that a qualified or a certified mechanic performs this installation.

It is the responsibility of the customer/installer to wear safety glasses at all times when performing this installation.

It is the customers/installers responsibility to read and understand all steps before installation begins. If you have any questions or concerns, please contact our technical department @ (801) 280-2777. Also, the OEM manual should be used as a reference guide.

This vehicles reaction and handling characteristics may differ from standard cars and/or trucks. Modifications to improve and/or enhance off road performance may raise the intended center of gravity. Extreme caution must be utilized when encountering driving conditions which may cause vehicle imbalance or loss of control. DRIVE SAFELY! Avoid abrupt maneuvers: such as sudden sharp turns which could cause a roll over, resulting in serious injury or death.

It is the customers responsibility to make sure that a re-torque is performed on all hardware associated with this suspension system after the first 100 miles of installation. It is also the customers responsibility to do a complete re-torque after every 3000 miles or after every off road use.

After the original installation, Tuff Country EZ-Ride Suspension also recommends having the alignment checked every 6 months to ensure proper tracking, proper wear on tires and front end components. Tuff Country EZ-Ride Suspension takes no responsibility for abuse, improper installation or improper suspension maintenance.

IMPORTANT!

This kit will NOT work on vehicles equipped with Air

Suspension. If your vehicle is equipped with this type of suspension, please contact the company you purchased the lift kit from and arrange for returning the parts. Limited lifetime warranty

Notice to all Tuff Country EZ-Ride Suspension customers: It is your responsibility to keep your original sales receipt! If failure should occur on any Tuff Country EZ-Ride Suspension component, your original sales receipt must accompany the warranted unit to receive warranty. Warranty will be void if the customer can not provide the original sales receipt. Do not install a body lift in conjunction with a suspension system. If a body lift is used in conjunction with any Tuff Country EZ-Ride Suspension product, your Tuff Country EZ-Ride Suspension WARRANTY WILL BE VOID. Tuff Country Inc. ("Tuff Country") suspension products are warranted to be free from defects in material and workmanship for life if purchased, installed and maintained on a non-commercial vehicle; otherwise, for a period of twelve (12) months, from the date of purchase and installation on a commercial vehicle, or twelve thousand (12,000) miles (which ever occurs first). Tuff Country does not warrant or make any representations concerning Tuff Country Products when not installed and used strictly in accordance with the manufacturer's instructions for such installation and operation and accordance with good installation and maintenance practices of the automotive industry. This warranty does not apply to the cosmetic finish of Tuff Country products nor to Tuff Country products which have been altered, improperly installed, maintained, used or repaired, or damaged by accident, negligence, misuse or racing. ("Racing is used in its broadest sense, and, for example, without regards to formalities in relation to prizes, competition, etc.) This warranty is void if the product is removed from the original vehicle and re-installed on that or any other vehicle. This warranty is exclusive and is in lieu of any implied warranty of merchantability, fitness for a particular purpose or other warranty of quality, whether express or implied, except the warranty of title. All implied warranties are limited to the duration of this warranty. The remedies set forth in this warranty are exclusive. This warranty excludes all labor charges or other incidental or consequential damages. Any part or product returned for warranty claim must be returned through the dealer of the distributor from whom it was purchased. Tuff Country reserves the right to examine all parts returned to it for warranty claim to determine whether or not any such part has failed because of defect in material or workmanship. The obligation of Tuff Country under this warranty shall be limited to repairing, replacing or crediting, at its option, any part or product found to be so defective. Regardless of whether any part is repaired, replaced or credited under this warranty, shipping and/or transportation charges on the return of such product must be prepaid by the customer under this warranty.

Before installation begins, Tuff Country EZ-Ride Suspension highly recommends that the installer performs a test drive on the vehicle. During the test drive, check to see if there are any uncommon sounds or vibrations. If uncommon sounds or vibrations occur on the test drive, uncommon sounds or vibrations will be enhanced once the suspension system has been installed. Tuff Country EZ-Ride Suspension highly recommends notifying the customer prior to installation to inform the customer of these issues if they exist.

This Suspension kit comes with (1) installation manual and some post installation procedure literature and it is the installers responsibility to make sure that the customer receives the post installation procedure literature. If a customer would like a copy of the installation manual, please have them visit our website at www.tuffcountry.com. Have them go to the customer care section to download these instructions. If you have any questions, please feel free to call us at (801) 280-2777.

Tuff Country Ez-Ride Suspension recommends using a 33" x 11.5" tire with 20" x 9" wheel and an offset of +18. If wider tires are used, offset wheels may be necessary and trimming may be required. OE wheels can be used but are not recommended with tires over 11.5" wide. **Our tire and wheel fitments are only a guideline. Different production times or tolerances will vary and this size should only be used as a starting point. Each vehicle is different and will need to be treated as such.**

Recommended tool selection:

Wall Mounted Strut Compressor
Torque wrench
Standard socket set
Standard wrench set
Metric socket set
Metric wrench set
Tape Measure

With the vehicle sitting on a level surface and under its own weight, record ride height measurements by measuring from the center of the wheel hub up to the leading edge of the front fender. Record measurements below.

Pre Installation Measurements:

Driver side front : _____

Passenger side front : _____

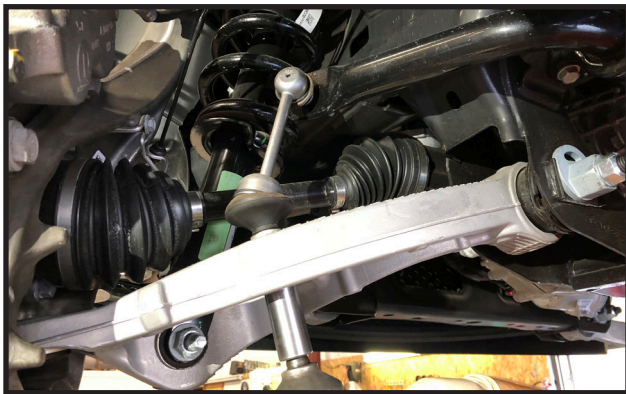
Post Installation Measurements:

Driver side front : _____

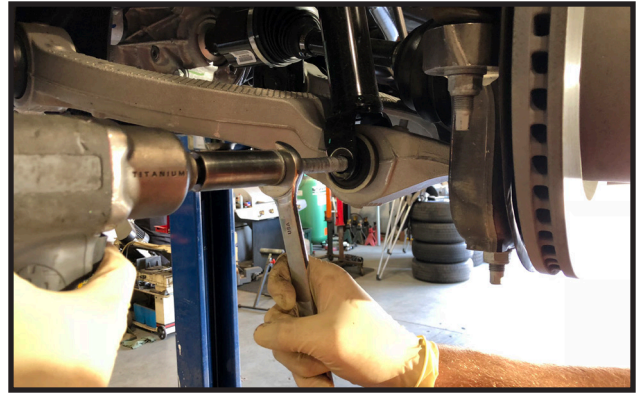
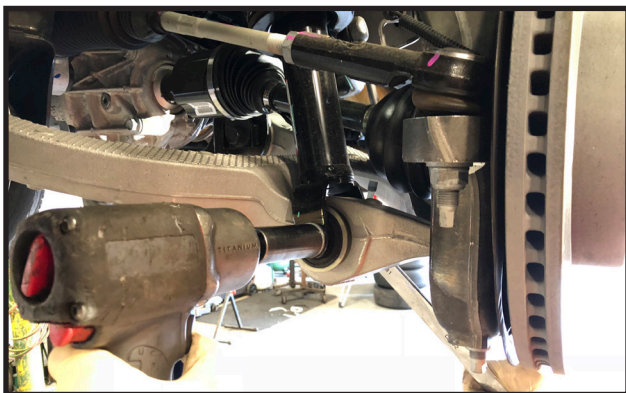
Passenger side front : _____

1. To begin installation, block the rear tires of the vehicle so that the vehicle is stable and can't roll backwards. Safely lift the front of the vehicle and support both the driver and passenger side frame rail with jack stands. Remove the tires and wheels from both sides.

2. Remove the lower swaybar endlink mounting hardware at the lower control arm and save the hardware.



3. Remove the lower strut mounting hardware at the lower control arm and save the hardware.



4. Carefully remove the lower control arm mounting/adjusting bolts so that the lower control arm can be dropped out of its frame pockets. **Special Note:** once these bolts are removed, the lower control arm and front suspension will be able to drop out quite a bit, be careful not to over extend any front brakelines or ABS wires.



6. Move to the upper strut mounting hardware and remove the 3 nuts. Carefully lower the strut assembly out of the vehicle.



7. Place the strut assembly into a wall mounted strut compressor, and make a reference mark on the top hat so that it can be re-installed in the same direction. **Special Note: If you do not have a wall mounted strut compressor, you will need to take the struts and new strut spacers to a certified technician to perform these steps.**

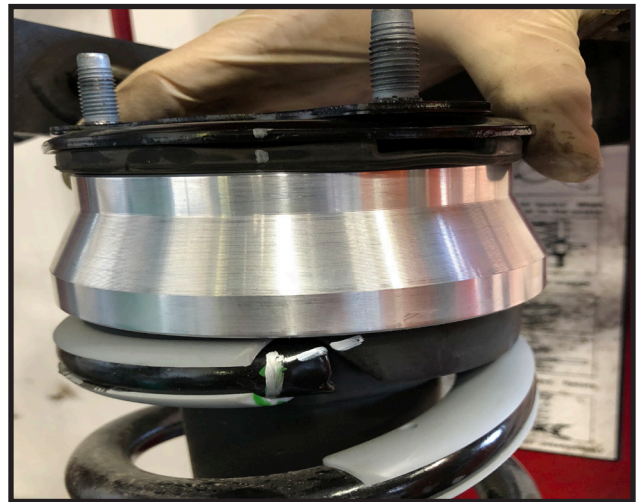


8. Carefully apply some pressure to the strut using the strut compressor, and remove the upper shock nut.

9. Lift the top hat off of the strut and set aside.



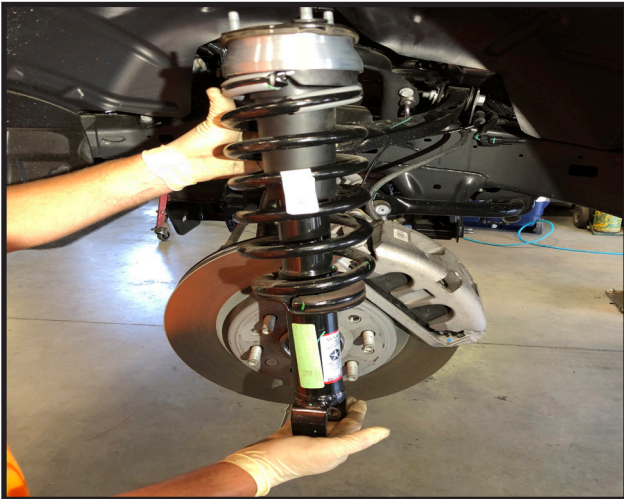
10. Install the new aluminum strut spacer on top of the coil spring. The order of pieces once installed are as follows: from the top down: OE top hat, OE rubber isolator, New factory strut spacer, OE dust shield, OE plastic spring lock.



11. Making sure to line up your reference marks from step #7, Carefully compress the strut assembly back together and re-install the OE nut. Torque to **30 ft lbs.**



12. Re-install the strut assembly into the vehicle and hold in place using the 3 OE nuts. **Do not tighten at this point.**



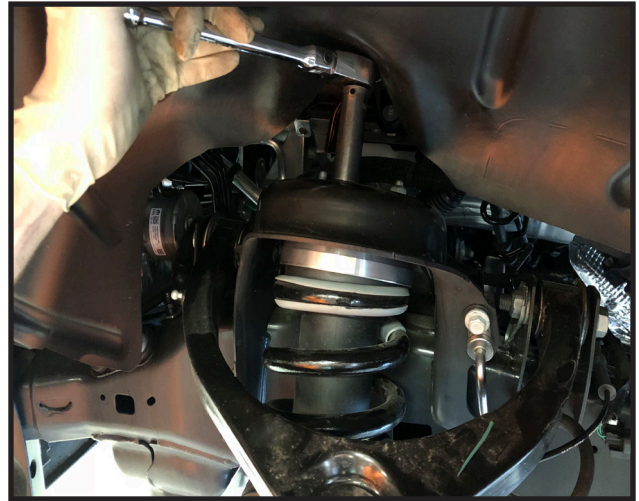
13. Raise the lower control arm up so that the lower strut mounting bolt can be re-installed but not tightened yet.

14. Re-install the lower control arm mounting/adjusting bolts and do not tighten yet.

15. Re-install the sway bar endlink lower mount and secure

using the OE hardware. Torque to **40 ft lbs.**

16. Move back to the 3 upper strut mounting hardware and torque to **30 ft lbs.**



17. Re-install the tires and wheels and carefully lower the vehicle back down to the ground.

18. Jounce the vehicle to get the suspension to settle at its new ride height.

19. Move back to the lower control arm mounting hardware and torque to **125 ft lbs. Set them in the center and they will be adjusted properly at the alignment shop.**

20. Move back to the lower strut mounting hardware and torque to **150 ft lbs.**

Congratulations, installation complete!

After the completion of this installation, Tuff Country EZ-Ride Suspension recommends taking the vehicle to an alignment shop and having the proper front end alignment performed.

Tuff Country Ez-Ride Suspension recommends that a complete re-torque is done on all the bolts associated with this suspension system. It is the customers responsibility to make sure that a re-torque is performed on all hardware associated with this suspension system after the first 100 miles of the installation. It is also the customers responsibility to do a complete re-torque after every 3000 miles or after every offroad use.