



# FORCE II™

## 409S Stainless Steel

Installation Instructions for:  
**SYSTEM #817704**  
2015-2017 CHEVROLET TAHOE / GMC YUKON  
5.3L · V8 ENGINE

11/28/16

1) Raise the vehicle up on a hoist or rack to working height. If you do not have access to a hoist or rack, raise the vehicle and support securely with jack stands.



2) Support the muffler with a stand. Using a hacksaw or sawsall, cut the stock tailpipe in front of the rear end behind the muffler hangers. Separate the wire hanger on the tailpipe from the rubber mount on the vehicle and remove the tailpipe from the vehicle.



3) Using a 15mm wrench, loosen the bolt on the clamped ball connection behind the catalytic converter. Separate the three wire hangers from the rubber mounts on the vehicle and lower the inlet pipe and muffler from the vehicle.



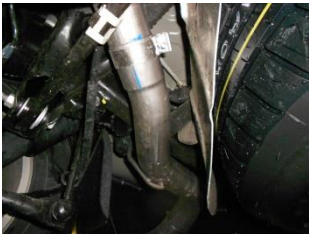
4) Place inlet pipe assembly **#26477S** into position onto the ball connection behind the catalytic converter. Connect the hanger on the pipe to the rubber mount on the vehicle, then reinstall the clamp onto the ball connection and tighten enough to hold but still allow for a small amount of adjustment.



5) Place the provided 3" clamp onto the inlet of muffler **#853057-Z**, then connect the inlet of the muffler to the inlet pipe and support with a stand. Tighten the clamp just enough to hold in position.



6) Place a provided 3" clamp onto the muffler outlet, place the over-axle pipe **#26478S** into position over the axle and slip into the muffler outlet. Connect the hangers on the pipe to the rubber mounts on the vehicle. Tighten the clamp just enough to hold in position.



7) Place a provided 3" clamp onto the expanded end of exit pipe **#26479S** and slide onto the back of the over-axle pipe. Be sure the two pipes slip completely together and connect the hanger on the pipe to the rubber mount on the vehicle. Tighten the clamp just enough to hold in position.

8) Place the **ST447** stainless tip onto the end of the exit pipe and rotate to the desired position. Tighten the pinch bolt on the tip enough to hold but still allow for adjustment.

9) Adjust the position of all pipes and muffler to provide a satisfactory fit. Be sure to maintain an adequate clearance around all parts of the system to avoid rattles or damage to heat sensitive components. Once you're happy with the fit, tighten all connections down securely. For a cleaner appearance and more secure installation, we highly recommend welding all slip-fit connections. After the system is secure, slide the 1/2" hanger keepers onto the end of the inlet pipe and tailpipe hangers of the vehicle. This will prevent the hangers from slipping out of the rubber mounts.

### PACKING LIST

<u>Qty</u>	<u>Description</u>	<u>Part#</u>	
1	Inlet Pipe Assy.	26477S	
1	Muffler	853057-Z	
1	Over-axle Pipe	26478S	
1	Exit Pipe	26479S	
1	Stainless Tip	ST447	
1	Parts Kit	PK780	
3	3" Clamp		MC300BS
4	1/2" Hanger Keeper		HW503



Installation diagram for:  
**SYSTEM #817704**  
2015-2017 CHEVROLET TAHOE / GMC YUKON  
5.3L · V8 ENGINE

# FORCE II™

**409S, Stainless Steel**

