



Installation Instructions
717931
2011-19 GM SILVERADO/SIERRA
2500/3500 HD
6.0L ENGINE
 Crew Cab with 6.5' Bed

OVERVIEW:

1. Take a moment to read and understand these instructions before installing your Flowmaster performance system.

NOTE: Please inventory all parts now before continuing and if necessary, report any missing items to our tech line. This will avoid potentially stranding your vehicle until any missing replacement parts arrive.

ITM #	PART #	DESCRIPTION	QTY.
N/A	PK1029	Hardware Package includes:	1
7	214HA	Rear Clamp Hanger	1
8	518HA	Extension Pipe Hanger	1
9	MC350BS	3½" Stainless Band Clamp	2
10	HW503	½" Hanger Keeper	5
11	HW211	¾"-16 x 2 HC Bolt	2
12	HW103	¾"-16 FH Nut	2
13	HW303	¾" Flat Washer	2
14	HW309	¾" Lock Washer	2

ITM #	PART #	DESCRIPTION	QTY.
1	36044M	Inlet Pipe Assembly	1
2	36071M	Extension Pipe	1
3	74151-Z	Muffler	1
4	36072M	Front Tailpipe	1
5	36073M	Rear Tailpipe	1
6	ST508B	Tip	1

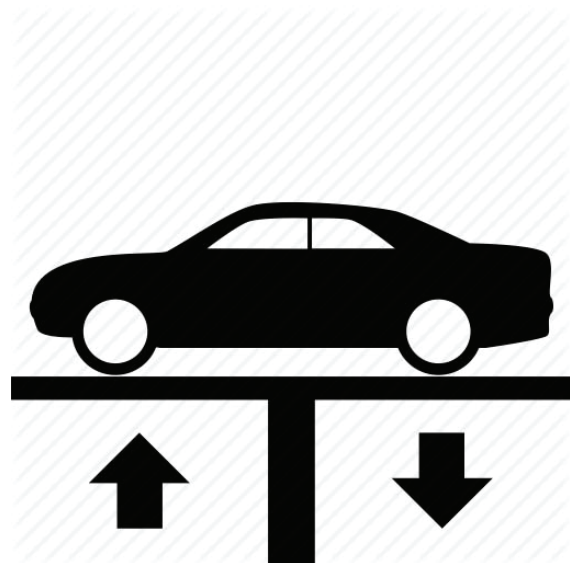
REMOVE STOCK EXHAUST SYSTEM:

2. Raise vehicle up on a hoist or rack to working height. If you don't have access to a hoist or rack, support vehicle with jack stands.

WARNING:
 Avoid serious burns! Allow your vehicle time to cool completely before touching any factory engine components.

To ease preparation and installation of your new kit:

- Apply penetrating lubricant to mounts, bolts and clamps before you remove them.
- Use stands as necessary to support parts as you detach them from your vehicle and again as you install new parts.



3. Remove nuts (x2) at catalytic converter flange. Separate hangers (x5) from isolators then carefully remove exhaust system from vehicle. You may also cut exhaust behind muffler to remove it in two pieces.



4. Remove studs (x2) from catalytic converter flange on factory exhaust. You will be using different fasteners to install your new Flowmaster exhaust system.



INSTALL FLOWMASTER EXHAUST SYSTEM

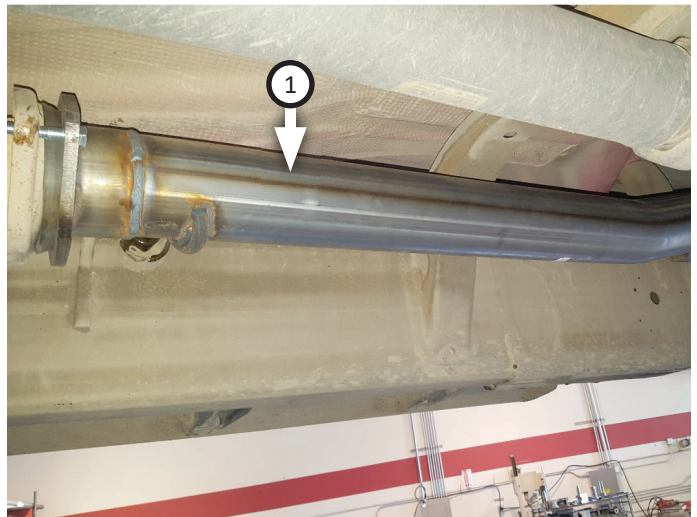
5. Remove nuts from stock and Flowmaster clamps, apply anti-seize compound to bolts and re-install nuts.

NOTE: The image in this step is intended for illustrative purposes only and may or may not accurately reflect components included in your kit.

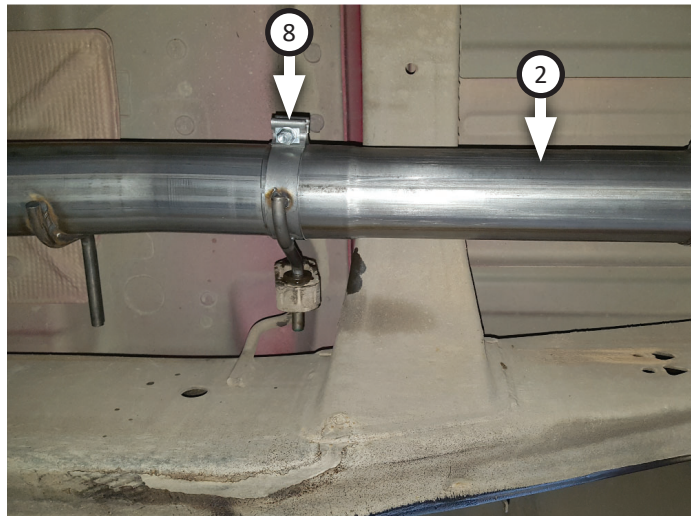
6. Every slip fit connection in this kit must seat 3" deep except for muffler connections which must seat 2" deep. Find all slip fit components in your kit and mark them accordingly so your Flowmaster exhaust system fits properly onto your vehicle.



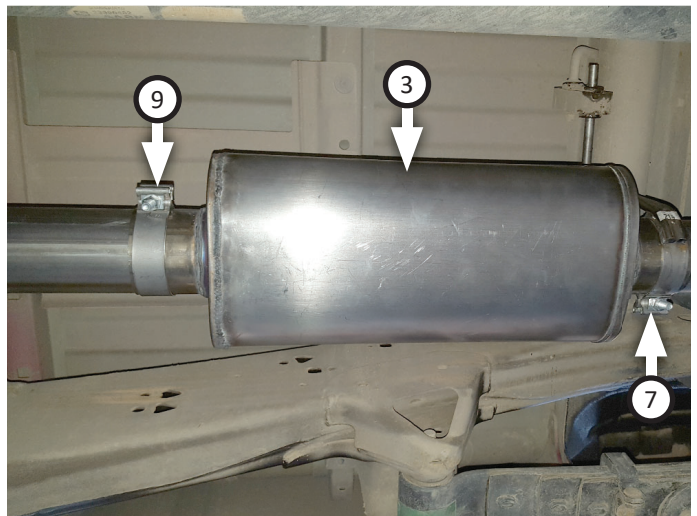
7. Connect **inlet pipe (1)** wire hanger to factory isolator near catalytic converter, then secure flanges using (x2 ea.) **bolts (11)**, **flat washers (13)**, **lock washers (14)** and **nuts (12)**.



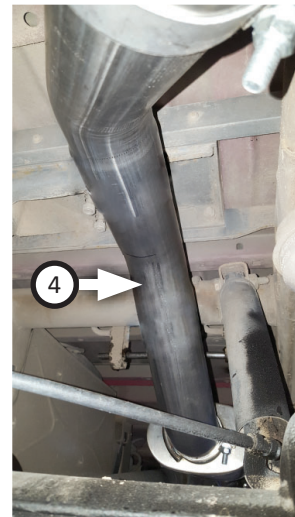
8. Place **extension pipe hanger (8)** onto **extension pipe (2)** then connect it to inlet pipe. Connect hanger to factory isolator then tighten clamp just enough to allow for adjustment.



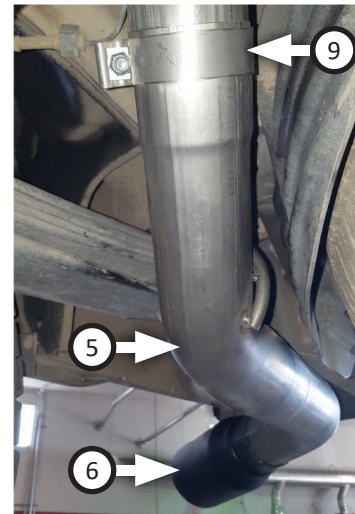
9. Place **clamp (9)** onto **muffler (3)** inlet then connect it to extension pipe. Tighten clamp enough to allow for adjustment. Place **rear clamp hanger (7)** onto muffler outlet then insert its hangers into isolators.



10. Route **front tailpipe (4)** over axle and connect it to muffler. Make sure its oriented properly then tighten front clamp just enough to allow for adjustment.



11. Place **clamp (9)** onto **rear tailpipe (5)** then connect it to left front tailpipe. Insert wire hanger into rubber hanger then tighten clamp just enough to allow for later adjustment.
12. Place **tip (6)** onto tailpipe and tighten inlet. Rotate pipes and tips to desired distance from body or bumper, so angle cut on tips are properly positioned.
13. Adjust exhaust components for fit; maintaining $\frac{1}{2}$ " clearance and compensating for suspension, travel and vibration then tighten all clamps. Finally, fit (x5) **hanger keepers (10)** onto each sideways hanger.
14. Recommended: Secure slip-fit connections with a 1-inch tack weld then spray high-temp paint over each weld to prevent rust and premature corrosion.



Congratulations, the installation of your FLOWMASTER performance exhaust system is now complete!





Installation Diagram
717931
2011-19 GM SILVERADO/SIERRA
2500/3500 HD
6.0L ENGINE
Crew Cab with 6.5' Bed

