

INSTRUCTION SHEET FOR SET #7.1116 NISSAN MAXIMA



1131 VIA CALLEJON, SAN CLEMENTE, CA 92673

It is recommended that if you are unfamiliar with this type of work that you refer to a qualified service center specializing in this type of work. It is also recommended that if you choose to do this work yourself that a factory service manual be obtained for the proper procedures pertaining to removal, replacement and proper torque specifications for your vehicle. This instruction set is intended as a guideline for the safe installation of Energy Suspension's Polyurethane. Wheel alignment is almost always disturbed when removing/replacing suspension components. It is recommended that you have the alignment checked on your vehicle at a qualified alignment shop.

© 2004 Energy Suspension. All rights reserved.
May not be reproduced, in any form, or by any means,
without the written consent of Energy Suspension.

Removal:

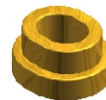
- Loosen front and rear motor mount through bolts.
- Remove bolts holding engine mounts to subframe.
- Remove four bolts holding subframe to car, remove subframe.
- Remove the OEM rubber bushings.



Installation:

- Install the #1199 and #1201 bushing into the top of the subframe.
- Install the subframe and now put on our #1200 and #1202 bushings.
- Install the OEM bolts and tighten. Now tighten all remaining bolts to factory specifications.

1199 Bushing x 2
(Front Position Top)



1200 Bushing x 2
(Front Position Bottom)



1201 Top Bushing x 2
(Rear Position Top)



1202 Bushing x 2
(Rear Position Bottom)



111104

17429

INSTRUCTION SHEET FOR SET #7.1116 NISSAN MAXIMA



1131 VIA CALLEJON, SAN CLEMENTE, CA 92673

It is recommended that if you are unfamiliar with this type of work that you refer to a qualified service center specializing in this type of work. It is also recommended that if you choose to do this work yourself that a factory service manual be obtained for the proper procedures pertaining to removal, replacement and proper torque specifications for your vehicle. This instruction set is intended as a guideline for the safe installation of Energy Suspension's Polyurethane. Wheel alignment is almost always disturbed when removing/replacing suspension components. It is recommended that you have the alignment checked on your vehicle at a qualified alignment shop.

© 2004 Energy Suspension. All rights reserved.
May not be reproduced, in any form, or by any means,
without the written consent of Energy Suspension.

Removal:

- Loosen front and rear motor mount through bolts.
- Remove bolts holding engine mounts to subframe.
- Remove four bolts holding subframe to car, remove subframe.
- Remove the OEM rubber bushings.



Installation:

- Install the #1199 and #1201 bushing into the top of the subframe.
- Install the subframe and now put on our #1200 and #1202 bushings.
- Install the OEM bolts and tighten. Now tighten all remaining bolts to factory specifications.

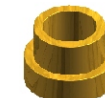
1199 Bushing x 2
(Front Position Top)



1200 Bushing x 2
(Front Position Bottom)



1201 Top Bushing x 2
(Rear Position Top)



1202 Bushing x 2
(Rear Position Bottom)



111104

17429