

## General Purpose Control Arm Bushing Instructions

(Diagram may not represent your exact bushing assembly)

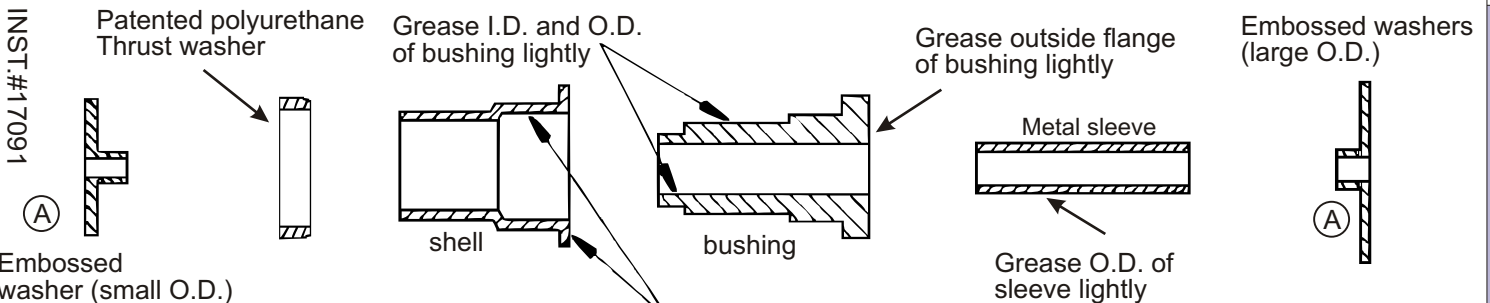
**If your new bushing kit does not have new shells and/or sleeves, you must reuse the original shells and /or sleeves.**

Embossed washers (when used) must be completely seated inside of sleeve before reinstalling the control arm. A vise can be used to compress embossed washers into the sleeve I.D. This will seat the washers properly.

It is recommended that if you are unfamiliar with this type of work that you refer to a qualified service center specializing in this type of work. It is also recommended that if you choose to do this work yourself that a factory service manual be obtained for the proper procedures pertaining to removal, replacement and proper torque specifications for your vehicle. This instruction set is intended as a guideline for the safe installation of Energy Suspension's polyurethane bushings, once you have removed the factory components from your vehicle.

For ease of installation of bushing and sleeve (or new shell when supplied) disassemble new bushing unit. (When supplied install shell first). Grease I.D. of shell. Grease bushing and install in shell. Grease sleeve and install in bushing.

**Note:** When a control arm cross shaft is used, it must be in position before installing bushings and/or new shells. All washers, or spacers on shaft must be reused, and installed in correct location before installing new bushings.



**IMPORTANT:** Coat urethane bushing, sleeve and shell I.D. lightly with supplied grease. (all surfaces of bushings that contact metal)

Grease flange and I.D. of shell lightly

**Note:** When reusing original shells, make sure inside surfaces are free of all old bushing material.

**ENERGY SUSPENSION**

1131 VIA CALLEJON, SAN CLEMENTE, CA 92673

© 2006 Energy Suspension. All rights reserved.  
May not be reproduced, in any form, or by any means, without the written consent of Energy Suspension.

## General Purpose Control Arm Bushing Instructions

(Diagram may not represent your exact bushing assembly)

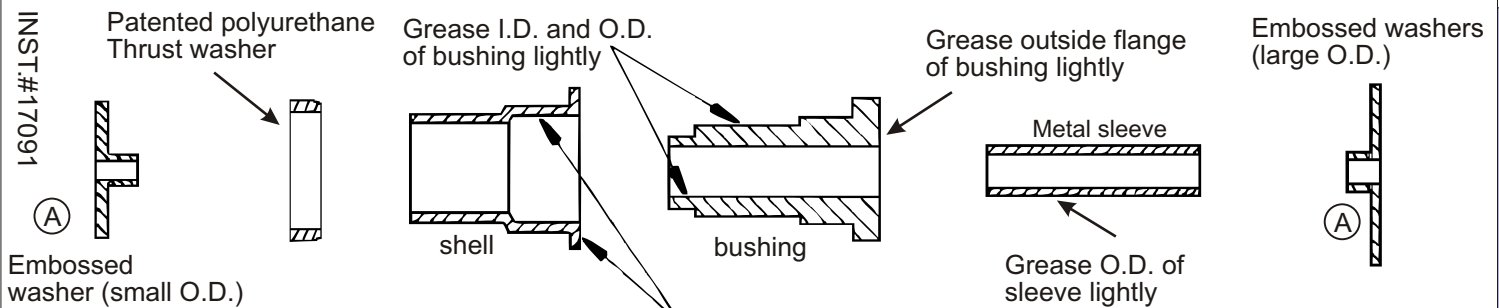
**If your new bushing kit does not have new shells and/or sleeves, you must reuse the original shells and /or sleeves.**

Embossed washers (when used) must be completely seated inside of sleeve before reinstalling the control arm. A vise can be used to compress embossed washers into the sleeve I.D. This will seat the washers properly.

It is recommended that if you are unfamiliar with this type of work that you refer to a qualified service center specializing in this type of work. It is also recommended that if you choose to do this work yourself that a factory service manual be obtained for the proper procedures pertaining to removal, replacement and proper torque specifications for your vehicle. This instruction set is intended as a guideline for the safe installation of Energy Suspension's polyurethane bushings, once you have removed the factory components from your vehicle.

For ease of installation of bushing and sleeve (or new shell when supplied) disassemble new bushing unit. (When supplied install shell first). Grease I.D. of shell. Grease bushing and install in shell. Grease sleeve and install in bushing.

**Note:** When a control arm cross shaft is used, it must be in position before installing bushings and/or new shells. All washers, or spacers on shaft must be reused, and installed in correct location before installing new bushings.



**IMPORTANT:** Coat urethane bushing, sleeve and shell I.D. lightly with supplied grease. (all surfaces of bushings that contact metal)

Grease flange and I.D. of shell lightly

**Note:** When reusing original shells, make sure inside surfaces are free of all old bushing material.

**ENERGY SUSPENSION**

1131 VIA CALLEJON, SAN CLEMENTE, CA 92673

© 2006 Energy Suspension. All rights reserved.  
May not be reproduced, in any form, or by any means, without the written consent of Energy Suspension.