

# INSTALL/REMOVAL INSTRUCTIONS: WINDOW REGULATOR

**ATTENTION:** Refer to the appropriate shop manual for your vehicle to obtain specific service procedures for this part. If you do not have a service manual or lack the skill to install this part, it is recommended that you seek the services of a qualified technician. Pay special attention to all cautions and warnings included in the shop manual. Read and follow all instructions carefully.

## REMOVAL/INSTALL OF WINDOW REGULATOR (748-569) Jeep Liberty 2002–2006

### General Tech Tips:

- Use painter's tape rather than duct tape to secure window. It will not damage paint or leave sticky residue.
- A plastic pry tool is useful. It will not easily damage delicate trim like a screwdriver or metal pry bar.
- The replacement regulator should have a liberal amount of grease on slide area. If there is not much grease present, white lithium grease works well to lubricate the slide area.
- Aftermarket window tinting can cause the window to travel slower and put additional strain on the window regulator assembly.
- Window run channels should be cleaned and lubricated before installation of a new window regulator assembly. Silicone spray works well.

**PLEASE WEAR SAFETY  
GLASSES!**

### Tools required for removal and installation of window regulator and motor assembly:

- **Silicone spray lubricant**
- **Trim panel removal tool**
- **Pick**
- **Saddle cup assembly, tape, or wedge to hold window in place**
- **Flat-blade screwdriver or plastic pry tool**
- **10mm socket or driver**
- **Phillips screwdriver**
- **Grease pencil or marker**



#### Disclaimer:

Even though every attempt is made to ensure this information is complete and accurate, it is impossible to account for all possible circumstances or situations. Please consult with a qualified auto technician before attempting to perform any work you are not qualified to do. Automobiles can be hazardous to work on; be sure to take all necessary safety precautions. Failure to do so may result in property damage or personal injury. Certain motor vehicle standards and performance requirements may apply to your motor vehicle (such as Federal Motor Vehicle Safety Standards by the National Highway Traffic Safety Administration). Be sure that your work is performed in accordance with such standards and that you do not disable any motor vehicle safety feature.

©2012 Dorman Products, Inc.

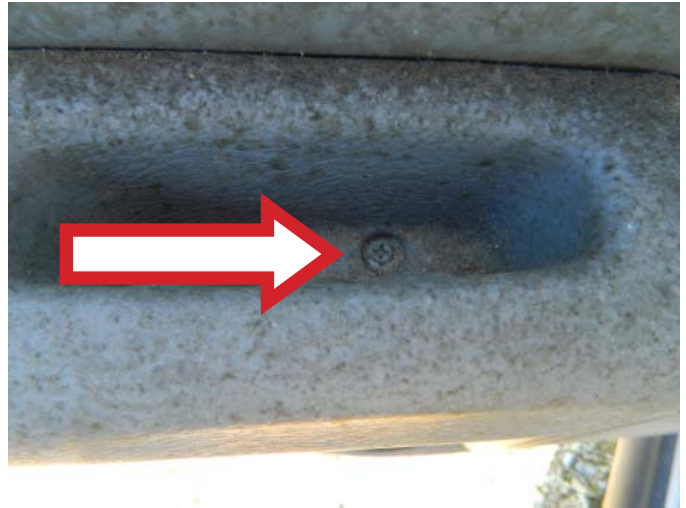
No reproductions in whole or in part without prior written approval.

# INSTALL/REMOVAL INSTRUCTIONS: WINDOW REGULATOR

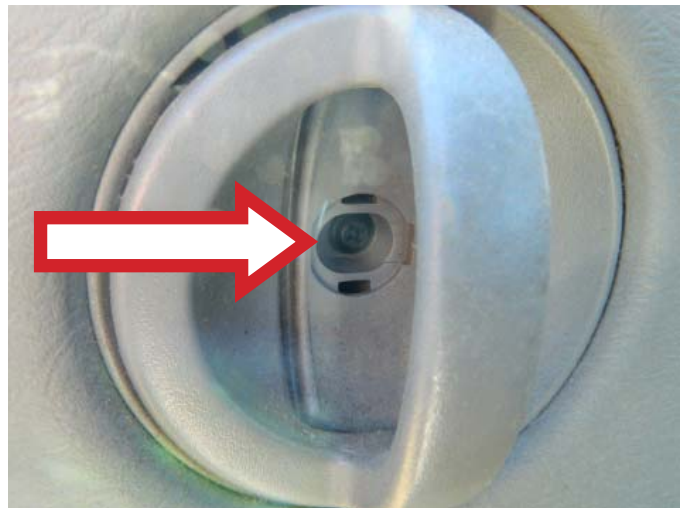
**ATTENTION:** Refer to the appropriate shop manual for your vehicle to obtain specific service procedures for this part. If you do not have a service manual or lack the skill to install this part, it is recommended that you seek the services of a qualified technician. Pay special attention to all cautions and warnings included in the shop manual. Read and follow all instructions carefully.

## Removal Instructions

**STEP 1:** Using a Phillips head screwdriver, remove the interior door trim panel retaining screw.



**STEP 2:** Using a pic or small flat-blade screwdriver, remove the cover exposing an interior door trim panel attaching screw. Once the cover has been removed, use a Phillips head screw driver to remove the interior door trim panel attaching screw.



**STEP 3:** Using a trim panel removal tool, release the interior door trim panel retainers.  
**NOTE:** The interior door trim panel retainers are about 8 inches apart from each other.

Disclaimer:

Even though every attempt is made to ensure this information is complete and accurate, it is impossible to account for all possible circumstances or situations. Please consult with a qualified auto technician before attempting to perform any work you are not qualified to do. Automobiles can be hazardous to work on; be sure to take all necessary safety precautions. Failure to do so may result in property damage or personal injury. Certain motor vehicle standards and performance requirements may apply to your motor vehicle (such as Federal Motor Vehicle Safety Standards by the National Highway Traffic Safety Administration). Be sure that your work is performed in accordance with such standards and that you do not disable any motor vehicle safety feature.

©2012 Dorman Products, Inc.

No reproductions in whole or in part without prior written approval.

# INSTALL/REMOVAL INSTRUCTIONS: WINDOW REGULATOR

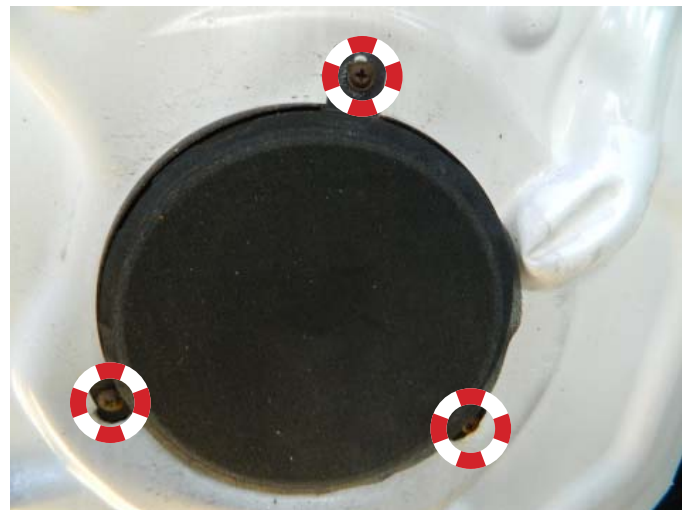
**ATTENTION:** Refer to the appropriate shop manual for your vehicle to obtain specific service procedures for this part. If you do not have a service manual or lack the skill to install this part, it is recommended that you seek the services of a qualified technician. Pay special attention to all cautions and warnings included in the shop manual. Read and follow all instructions carefully.

**STEP 4:** Once the interior door trim panel has been released, disconnect the interior door latch rod from the interior door handle.



**STEP 5:** Remove the interior door trim panel.

**STEP 6:** Using a Phillips head screw driver, remove the three (3) door speaker attaching screws.



Disclaimer:

Even though every attempt is made to ensure this information is complete and accurate, it is impossible to account for all possible circumstances or situations. Please consult with a qualified auto technician before attempting to perform any work you are not qualified to do. Automobiles can be hazardous to work on; be sure to take all necessary safety precautions. Failure to do so may result in property damage or personal injury. Certain motor vehicle standards and performance requirements may apply to your motor vehicle (such as Federal Motor Vehicle Safety Standards by the National Highway Traffic Safety Administration). Be sure that your work is performed in accordance with such standards and that you do not disable any motor vehicle safety feature.

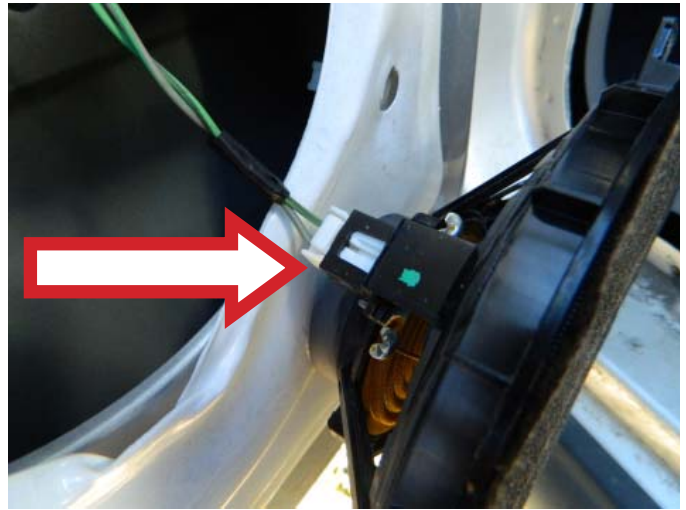
©2012 Dorman Products, Inc.

No reproductions in whole or in part without prior written approval.

# INSTALL/REMOVAL INSTRUCTIONS: WINDOW REGULATOR

**ATTENTION:** Refer to the appropriate shop manual for your vehicle to obtain specific service procedures for this part. If you do not have a service manual or lack the skill to install this part, it is recommended that you seek the services of a qualified technician. Pay special attention to all cautions and warnings included in the shop manual. Read and follow all instructions carefully.

**STEP 7:** Disconnect the door speaker.



**STEP 8:** Remove the interior water vapor barrier.



**STEP 9:** Operate the power window switch and lower the window glass to expose the two (2) window glass mounting bolts.

**STEP 10:** Remove the two (2) window glass mounting bolts and manually slide the window glass into the up position. Hold the window glass in place with either a saddle cup assembly, painter's tape, or a wedge.

Disclaimer:

Even though every attempt is made to ensure this information is complete and accurate, it is impossible to account for all possible circumstances or situations. Please consult with a qualified auto technician before attempting to perform any work you are not qualified to do. Automobiles can be hazardous to work on; be sure to take all necessary safety precautions. Failure to do so may result in property damage or personal injury. Certain motor vehicle standards and performance requirements may apply to your motor vehicle (such as Federal Motor Vehicle Safety Standards by the National Highway Traffic Safety Administration). Be sure that your work is performed in accordance with such standards and that you do not disable any motor vehicle safety feature.

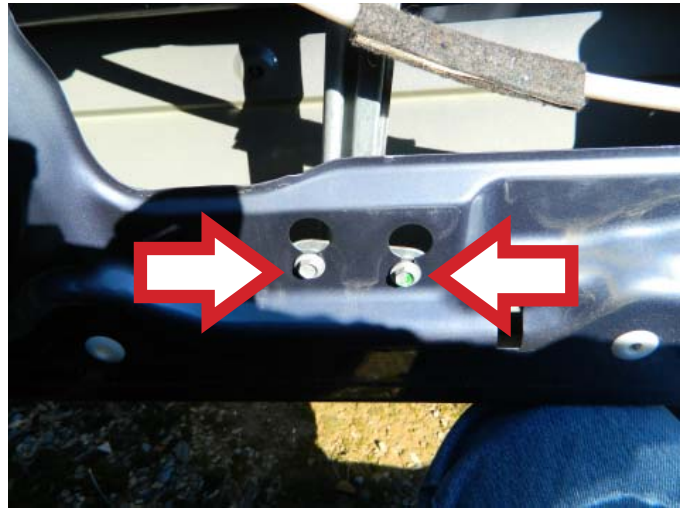
©2012 Dorman Products, Inc.

No reproductions in whole or in part without prior written approval.

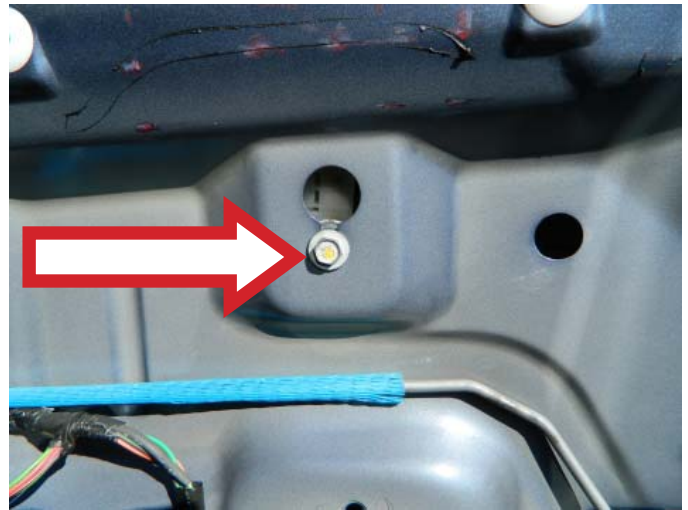
# INSTALL/REMOVAL INSTRUCTIONS: WINDOW REGULATOR

**ATTENTION:** Refer to the appropriate shop manual for your vehicle to obtain specific service procedures for this part. If you do not have a service manual or lack the skill to install this part, it is recommended that you seek the services of a qualified technician. Pay special attention to all cautions and warnings included in the shop manual. Read and follow all instructions carefully.

**STEP 11:** Remove the bottom two (2) regulator attaching bolts.



**STEP 12:** Remove the upper regulator attaching bolt.



**STEP 13:** Once the window regulator attaching hardware has been removed, remove the window regulator assembly through the access hole.

**Disclaimer:**

Even though every attempt is made to ensure this information is complete and accurate, it is impossible to account for all possible circumstances or situations. Please consult with a qualified auto technician before attempting to perform any work you are not qualified to do. Automobiles can be hazardous to work on; be sure to take all necessary safety precautions. Failure to do so may result in property damage or personal injury. Certain motor vehicle standards and performance requirements may apply to your motor vehicle (such as Federal Motor Vehicle Safety Standards by the National Highway Traffic Safety Administration). Be sure that your work is performed in accordance with such standards and that you do not disable any motor vehicle safety feature.

©2012 Dorman Products, Inc.

No reproductions in whole or in part without prior written approval.

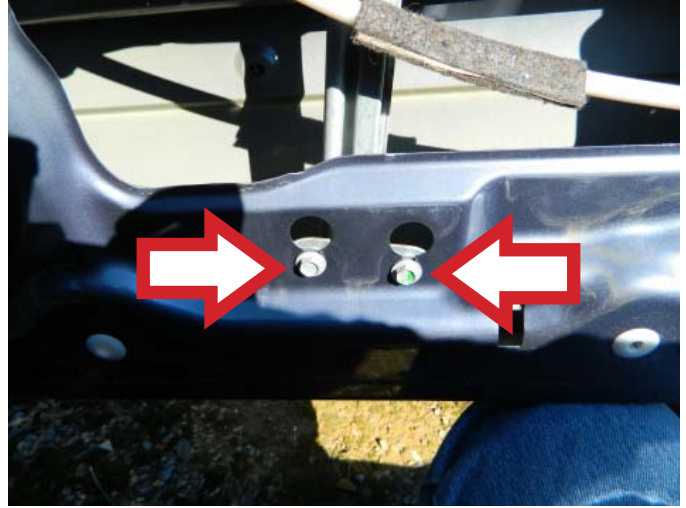
# INSTALL/REMOVAL INSTRUCTIONS: WINDOW REGULATOR

**ATTENTION:** Refer to the appropriate shop manual for your vehicle to obtain specific service procedures for this part. If you do not have a service manual or lack the skill to install this part, it is recommended that you seek the services of a qualified technician. Pay special attention to all cautions and warnings included in the shop manual. Read and follow all instructions carefully.

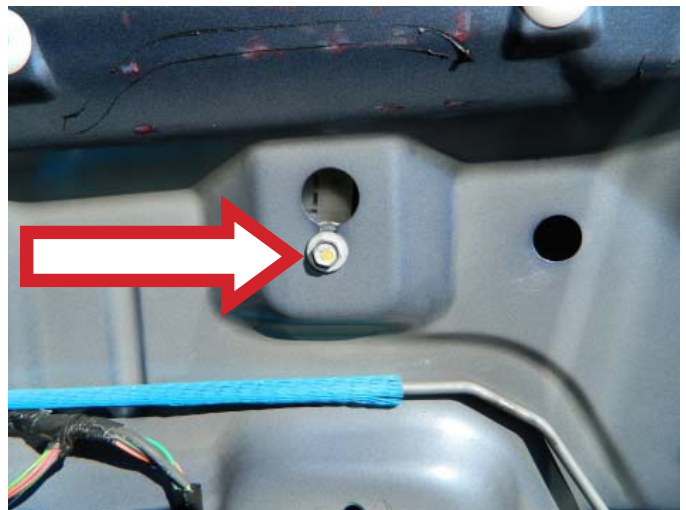
## Installation Instructions

**STEP 1:** Place the window regulator through the access hole.

**STEP 2:** Loosely mount the bottom of the window regulator into position.



**STEP 3:** Loosely mount the top of the window regulator into position.



**STEP 4:** Once the window regulator has been put into position, tighten the window regulator attaching bolts.

**STEP 4a:** Connect the window lift motor connector.

**STEP 5:** Manually slide the window glass down to attach to the window regulator.

**NOTE:** It may be necessary to temporarily connect the master power switch assembly to raise or lower the window regulator lift plate.

Disclaimer:

Even though every attempt is made to ensure this information is complete and accurate, it is impossible to account for all possible circumstances or situations. Please consult with a qualified auto technician before attempting to perform any work you are not qualified to do. Automobiles can be hazardous to work on; be sure to take all necessary safety precautions. Failure to do so may result in property damage or personal injury. Certain motor vehicle standards and performance requirements may apply to your motor vehicle (such as Federal Motor Vehicle Safety Standards by the National Highway Traffic Safety Administration). Be sure that your work is performed in accordance with such standards and that you do not disable any motor vehicle safety feature.

©2012 Dorman Products, Inc.

No reproductions in whole or in part without prior written approval.

# INSTALL/REMOVAL INSTRUCTIONS: WINDOW REGULATOR

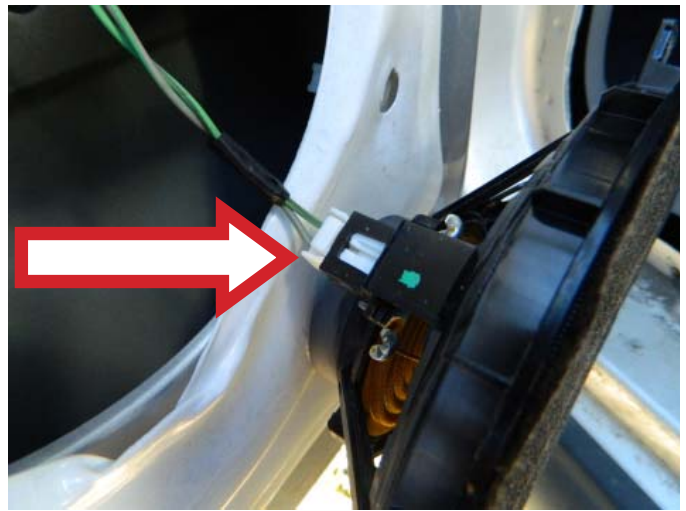
**ATTENTION:** Refer to the appropriate shop manual for your vehicle to obtain specific service procedures for this part. If you do not have a service manual or lack the skill to install this part, it is recommended that you seek the services of a qualified technician. Pay special attention to all cautions and warnings included in the shop manual. Read and follow all instructions carefully.

**STEP 6:** Install the water vapor barrier.

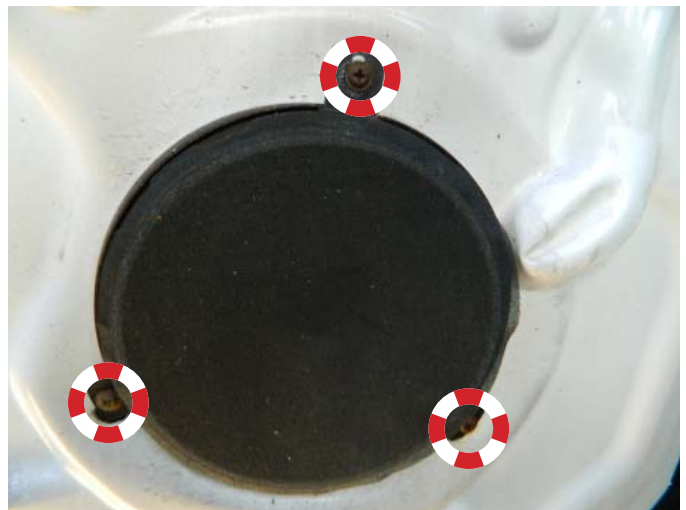
**NOTE:** Be sure to slide the interior door latch rod through the water vapor barrier.



**STEP 7:** Connect the door speaker.



**STEP 7a:** Attach the three (3) door speaker attaching screws.



Disclaimer:

Even though every attempt is made to ensure this information is complete and accurate, it is impossible to account for all possible circumstances or situations. Please consult with a qualified auto technician before attempting to perform any work you are not qualified to do. Automobiles can be hazardous to work on; be sure to take all necessary safety precautions. Failure to do so may result in property damage or personal injury. Certain motor vehicle standards and performance requirements may apply to your motor vehicle (such as Federal Motor Vehicle Safety Standards by the National Highway Traffic Safety Administration). Be sure that your work is performed in accordance with such standards and that you do not disable any motor vehicle safety feature.

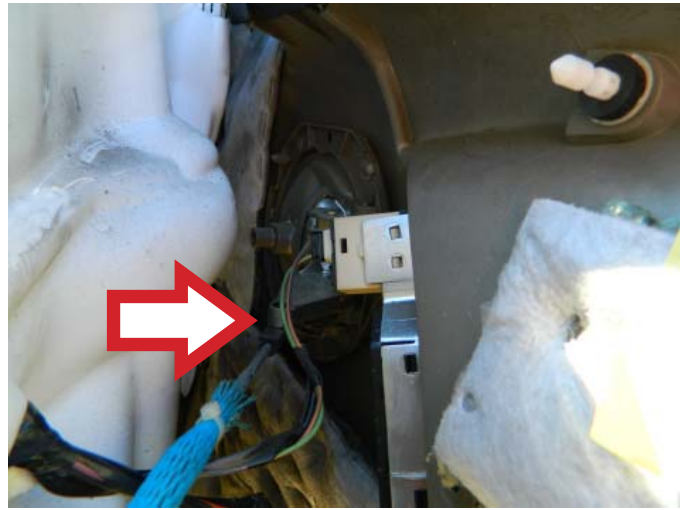
©2012 Dorman Products, Inc.

No reproductions in whole or in part without prior written approval.

# INSTALL/REMOVAL INSTRUCTIONS: WINDOW REGULATOR

**ATTENTION:** Refer to the appropriate shop manual for your vehicle to obtain specific service procedures for this part. If you do not have a service manual or lack the skill to install this part, it is recommended that you seek the services of a qualified technician. Pay special attention to all cautions and warnings included in the shop manual. Read and follow all instructions carefully.

**STEP 8:** Attach the interior door latch rod to the interior door handle.



**STEP 9:** Connect the power door lock switch.



**STEP 10:** Install the interior door trim panel. **NOTE:** Be sure to align all of the door trim panel retainers.

Disclaimer:

Even though every attempt is made to ensure this information is complete and accurate, it is impossible to account for all possible circumstances or situations. Please consult with a qualified auto technician before attempting to perform any work you are not qualified to do. Automobiles can be hazardous to work on; be sure to take all necessary safety precautions. Failure to do so may result in property damage or personal injury. Certain motor vehicle standards and performance requirements may apply to your motor vehicle (such as Federal Motor Vehicle Safety Standards by the National Highway Traffic Safety Administration). Be sure that your work is performed in accordance with such standards and that you do not disable any motor vehicle safety feature.

©2012 Dorman Products, Inc.

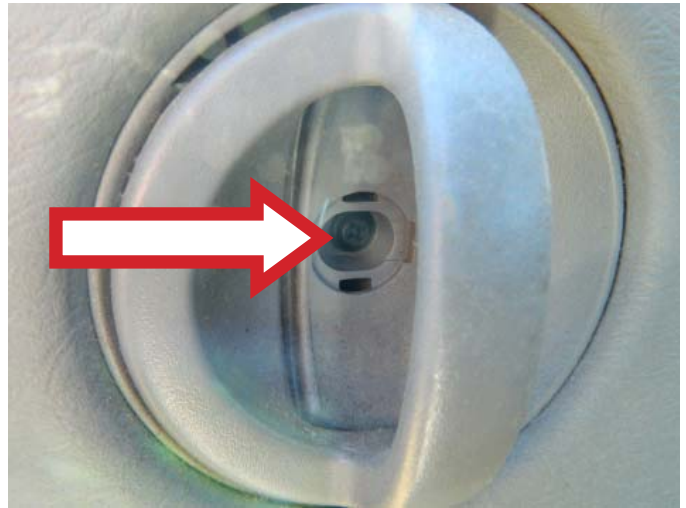
No reproductions in whole or in part without prior written approval.



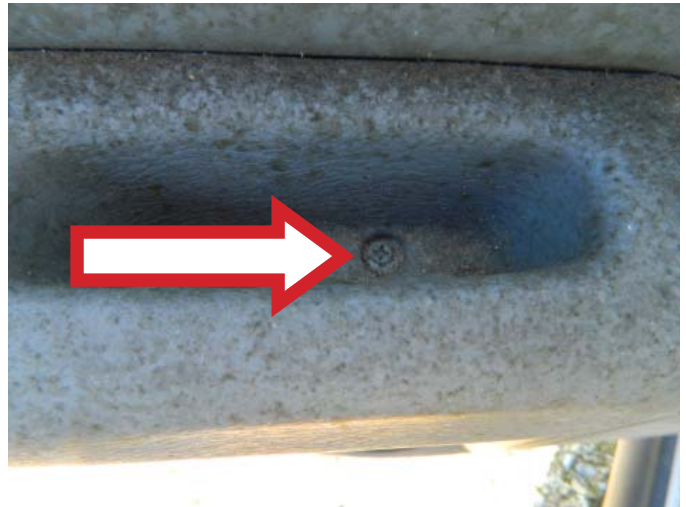
# INSTALL/REMOVAL INSTRUCTIONS: WINDOW REGULATOR

**ATTENTION:** Refer to the appropriate shop manual for your vehicle to obtain specific service procedures for this part. If you do not have a service manual or lack the skill to install this part, it is recommended that you seek the services of a qualified technician. Pay special attention to all cautions and warnings included in the shop manual. Read and follow all instructions carefully.

**STEP 11:** Install the interior door trim panel door handle bezel retaining screw.



**STEP 12:** Install the interior door trim panel door pull retaining screw.



**STEP 13:** Verify that the interior door trim panel is securely fastened and that the window regulator operates properly.

**We appreciate your opinions regarding this product!  
Please call our Technical Assistant with any challenges or suggestions  
regarding the installation or operation of this product.**

**1-800-523-2492**

**Disclaimer:**

Even though every attempt is made to ensure this information is complete and accurate, it is impossible to account for all possible circumstances or situations. Please consult with a qualified auto technician before attempting to perform any work you are not qualified to do. Automobiles can be hazardous to work on; be sure to take all necessary safety precautions. Failure to do so may result in property damage or personal injury. Certain motor vehicle standards and performance requirements may apply to your motor vehicle (such as Federal Motor Vehicle Safety Standards by the National Highway Traffic Safety Administration). Be sure that your work is performed in accordance with such standards and that you do not disable any motor vehicle safety feature.

©2012 Dorman Products, Inc.

No reproductions in whole or in part without prior written approval.