



PRINT THIS DOCUMENT AT 100% ORIGINAL SIZE. UNCHECK PRINTER AUTO SCALING FEATURES TO ENSURE ACCURACY OF TEMPLATE PAGES

# 2009 DODGE RAM

## Rear Sensing System

<b>A</b> 	<b>B</b> 	<b>C</b> 			
<b>D</b> 	<b>E</b> 	<b>F</b> 	<b>G</b> 	<b>H</b> 6X 	
<b>I</b>  5 AMP	<b>J</b> 	<b>K</b> 	<b>L</b> 	<b>M</b> 	<b>O</b> 
		 7mm 10mm		 T20 T25	
		 1/8" (3mm)	 30mm		 Ø 5mm

**GB**

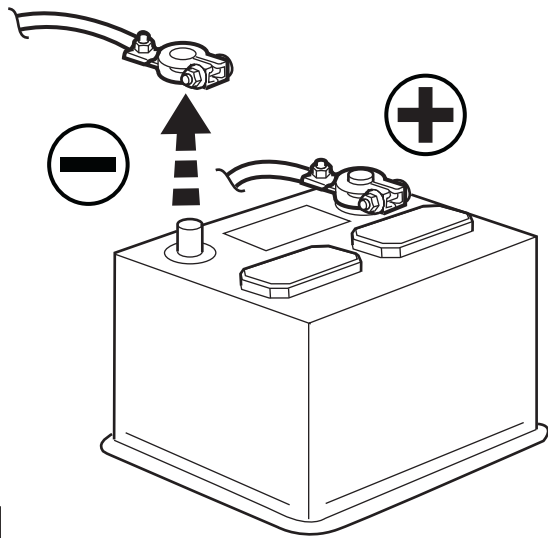
- Detach the left A-pillar trim panel.
- Install audio/visual display to the left A-pillar trim panel as shown.
- Carefully pull the sensor cable connectors one at a time into the vehicle. Keep cables away from sharp edges and ensure they are not pinched.
- Determine which vehicle wires have the ground and back-up lamp signals. Disconnect the negative battery cable and perform center splicing as shown.
- Use RTV sealant on any altered grommets to prevent water leaks.
- Connect audio/visual display cable to the extension cable.
- Make all connections to the controller. Install controller using hook and loop patches and screws.
- Loop up slack in cables and wires. Apply tie straps and stow away neatly. Do not kink or tightly coil the cables.
- Re-connect battery and check operation of the reverse sensing system.
- The audio/visual display can be set to NO AUDIO, LOW AUDIO, or HIGH AUDIO.

**E**

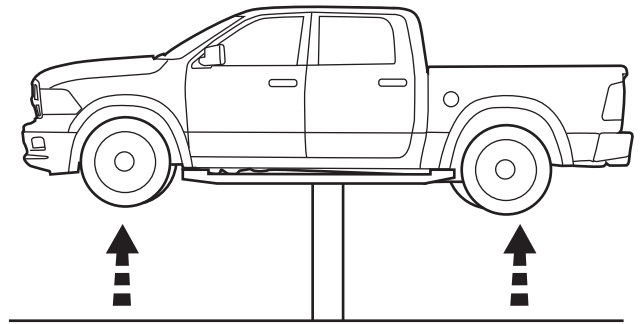
- Separe los panele de guarnición izquierdo del pilar A.
- Instale la pantalla de audio visual en el panel de guarnición del pilar A izquierdo, como se muestra.
- Mantenga los cables alejados de bordes filosos y asegúrese de que no queden apretados.
- Determine qué cables de la luz trasera tendrán una conexión a tierra y qué cables serán los de las luces de señales. Desconecte el cable negativo de la batería y centre un empalme como se muestra.
- Utilice sellador RTV en cualquier arandela modificada para evitar las filtraciones de agua.
- Conecte el cable de la pantalla de audio visual al cable de extensión.
- Realice todas las conexiones al controlador. Instale el controlador utilizando parches de cierre por adherencia y tornillos.
- Forme un lazo con la holgura de los cables y alambres. Coloque correas de sujeción y acomode bien. No retuerza ni enrolle los cables en forma ajustada.
- Vuelva a conectar la batería y verifique el funcionamiento del sistema de sensores de reversa.
- La pantalla de audio visual puede establecerse en NO AUDIO (sin volumen), LOW AUDIO (volumen bajo), o HIGH AUDIO (volumen alto).

**F**

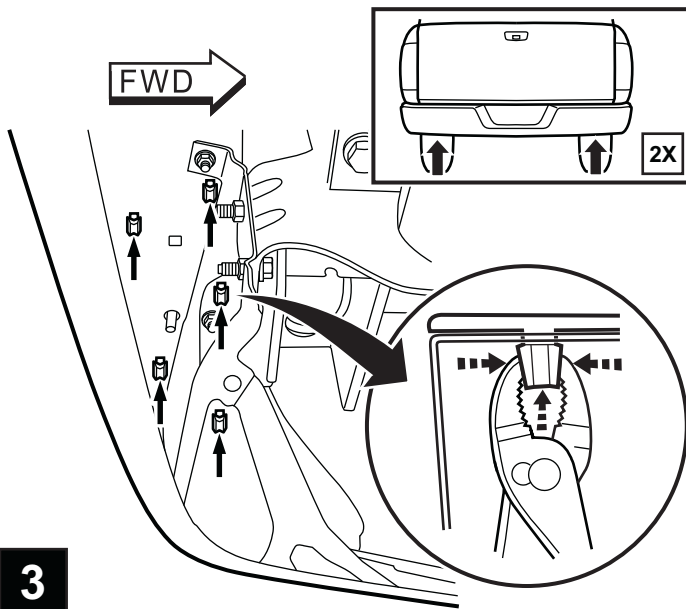
- Détacher l'habillage des montants A gauche.
- Installer l'affichage audiovisuel sur l'habillage du montant A de gauche, comme illustré.
- Installer les capteurs comme illustré et engager les clips à fond. Connecter les câbles des capteurs.
- Garder les câbles à l'écart des bords tranchants et s'assurer qu'ils ne sont pas pincés.
- Déterminer quel fil de feu arrière est celui de la masse et quel est le fil de tension. Débrancher le câble de batterie négatif et épisser, comme illustré.
- Appliquer du mastic silicone RTV sur les passe-câbles pour empêcher la pénétration d'eau.
- Raccorder le câble de l'affichage audiovisuel au câble prolongateur.
- Effectuer toutes les connexions sur le contrôleur. Installer le contrôleur au moyen des pastilles à boucles et crochets et des vis.
- Enrouler l'excédent de câbles et de fils. Les fixer avec des attaches en plastiques et les ranger bien nettement. Ne pas vriller les câble ou les enrouler trop serré.
- Rebrancher le fil de batterie et vérifier le fonctionnement du système d'alerte de recul.
- L'affichage audiovisuel peut être réglé sur NO AUDIO, LOW AUDIO, or HIGH AUDIO (pas de son, son minimum, son maximum).



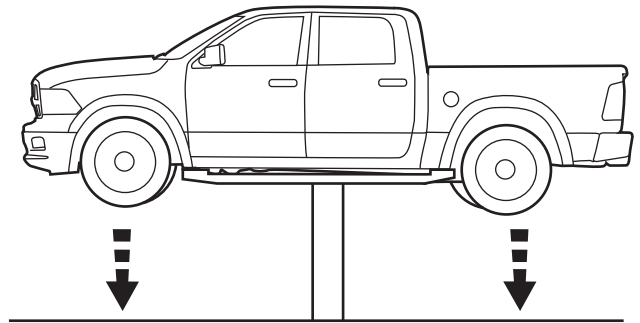
1



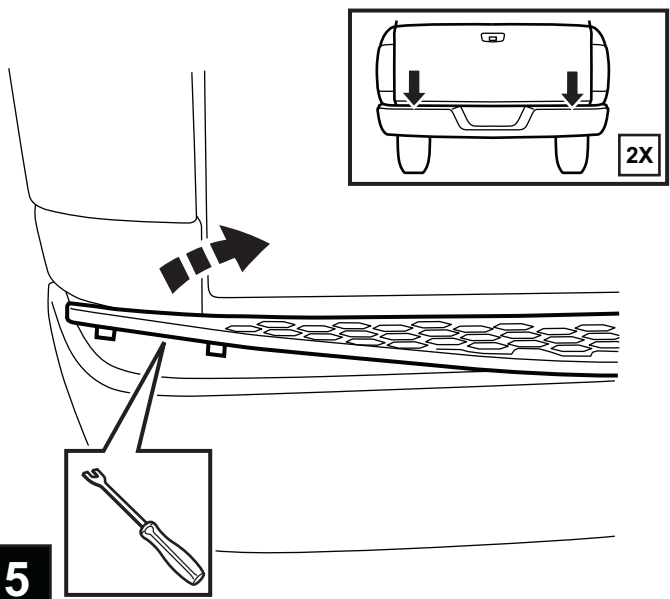
2



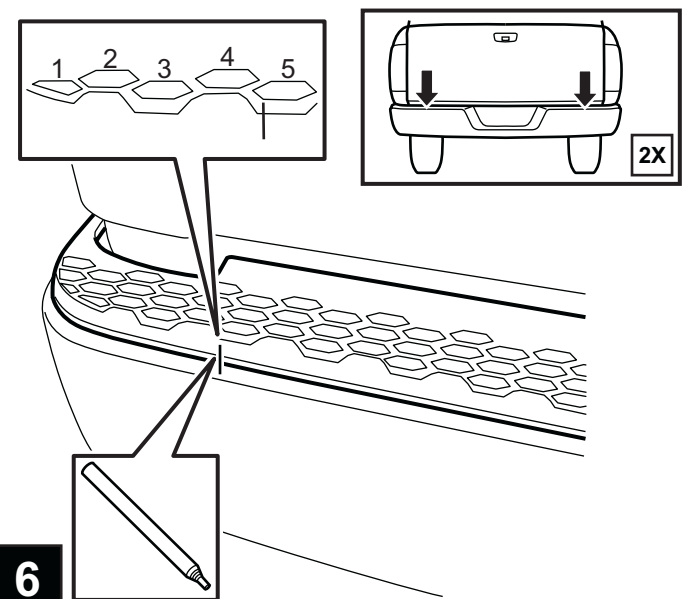
3



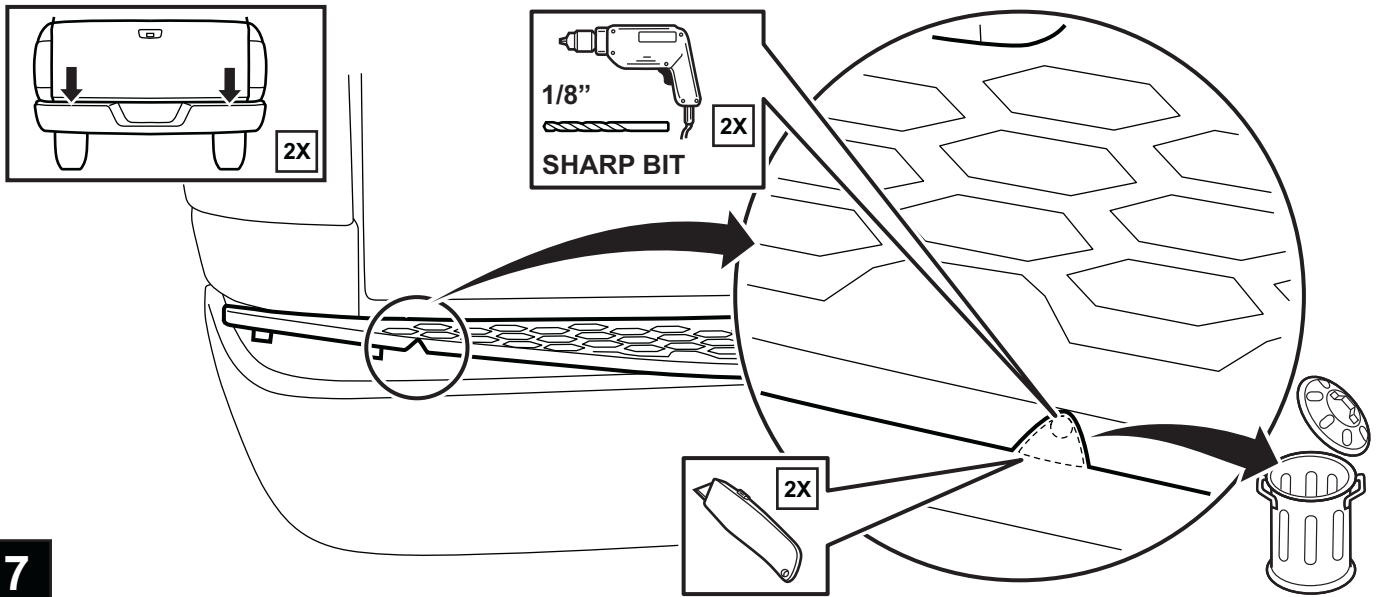
4



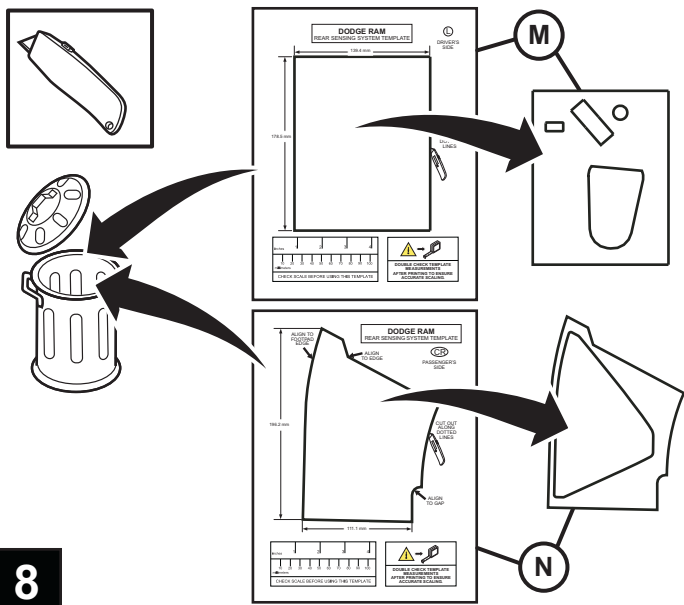
5



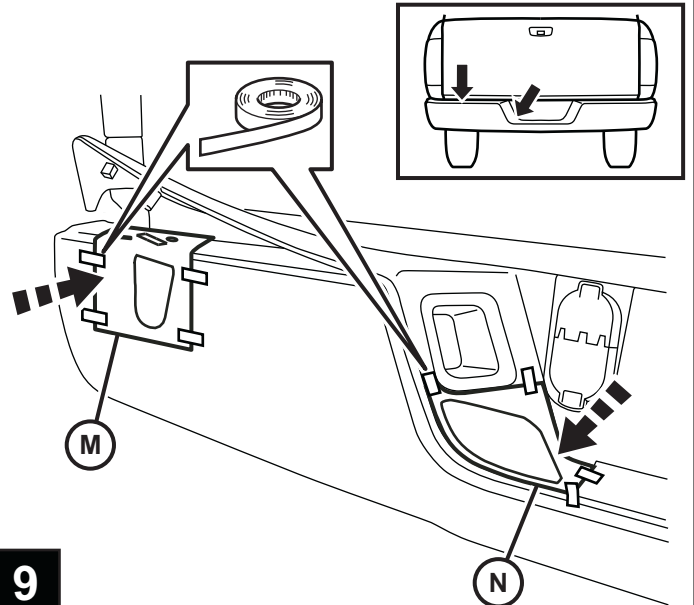
6



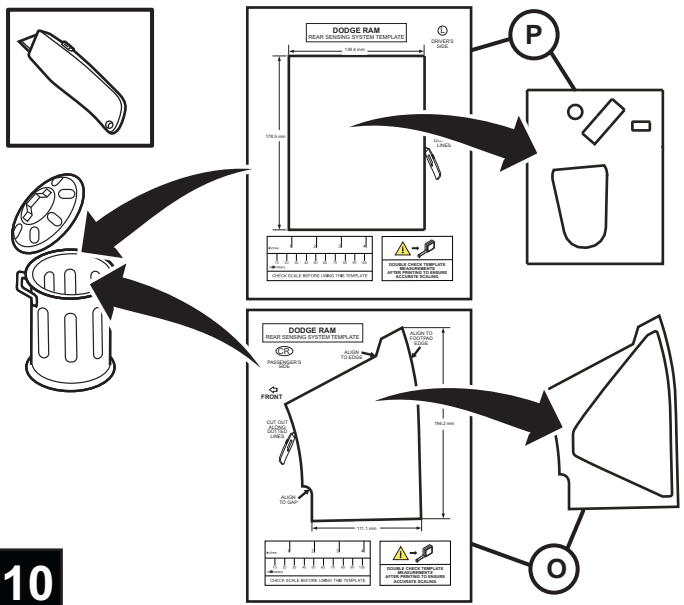
7



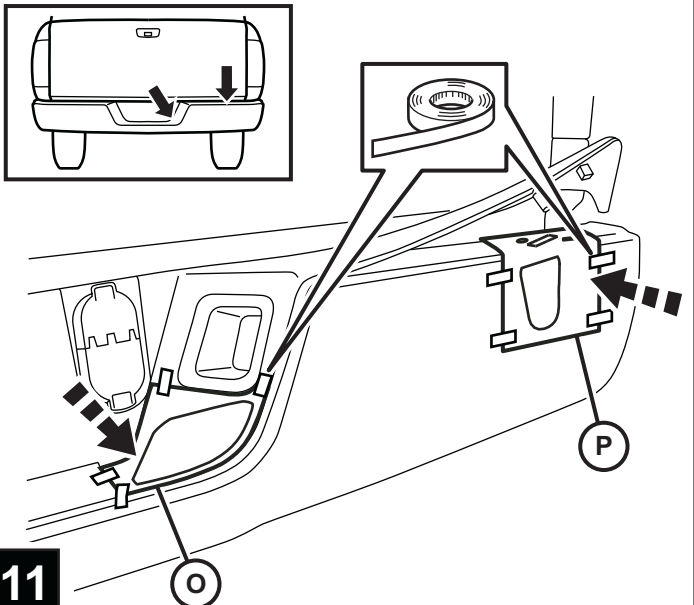
8



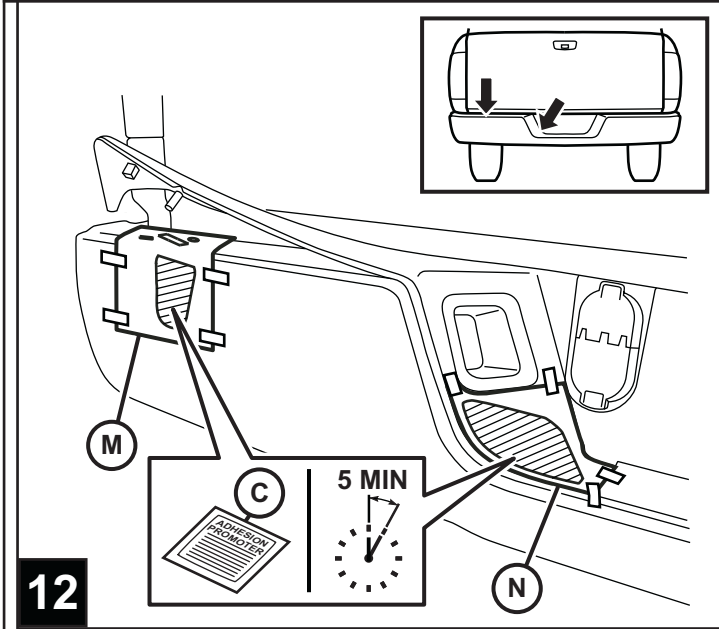
9



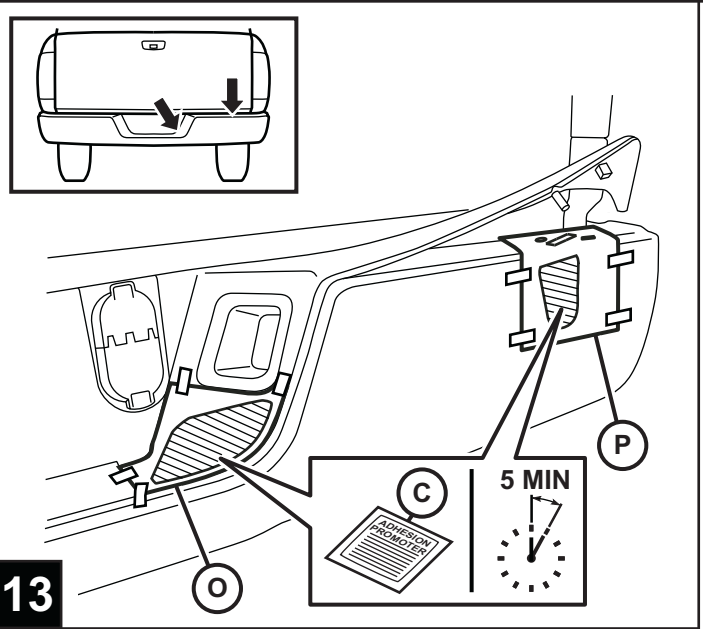
10



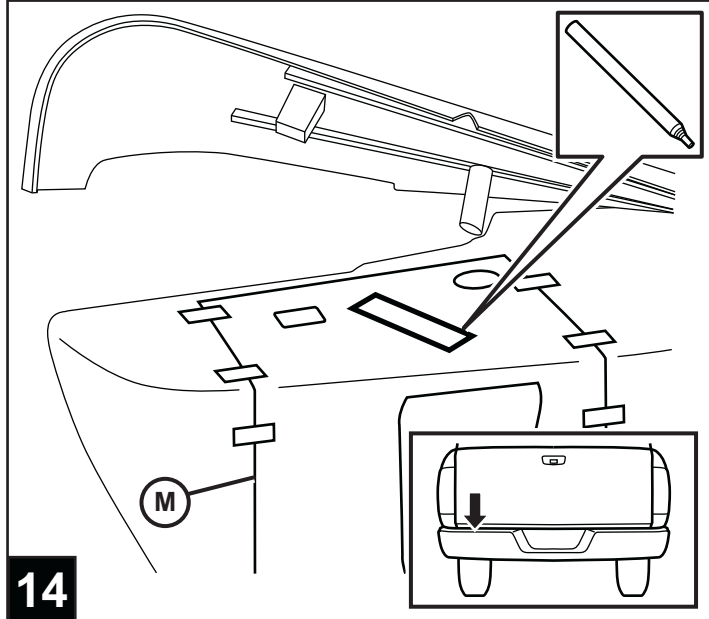
11



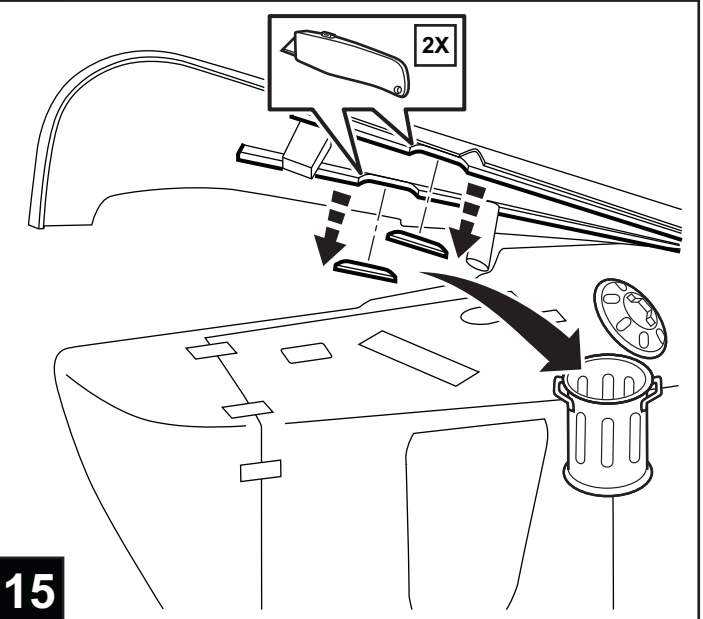
12



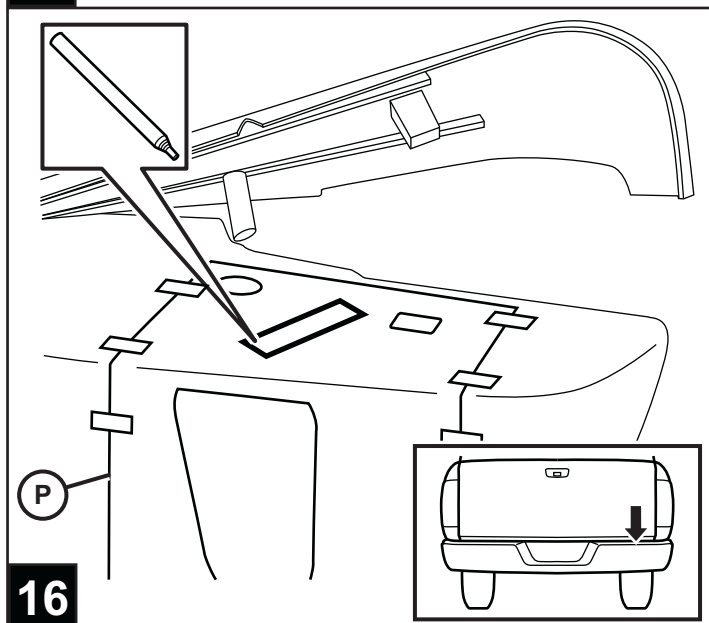
13



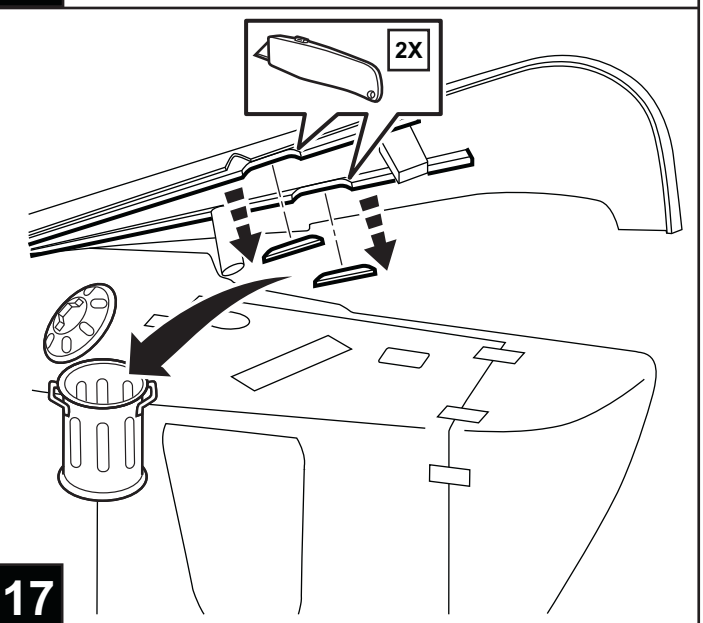
14



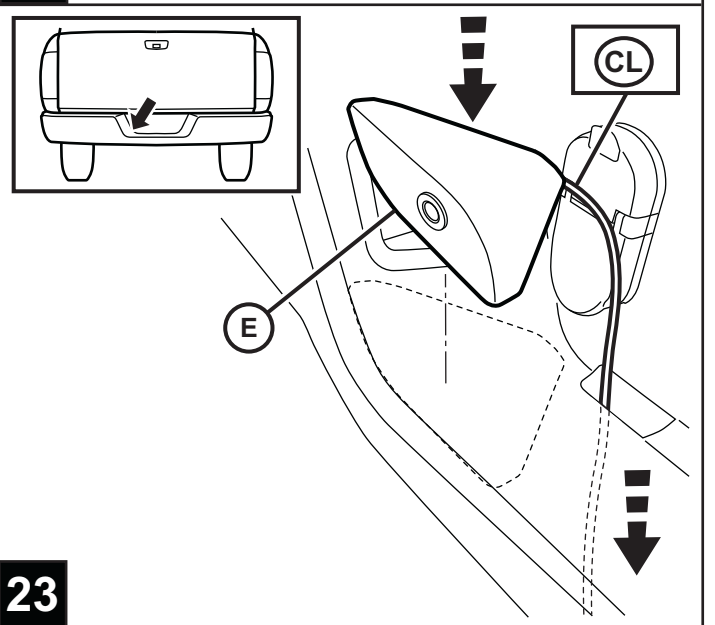
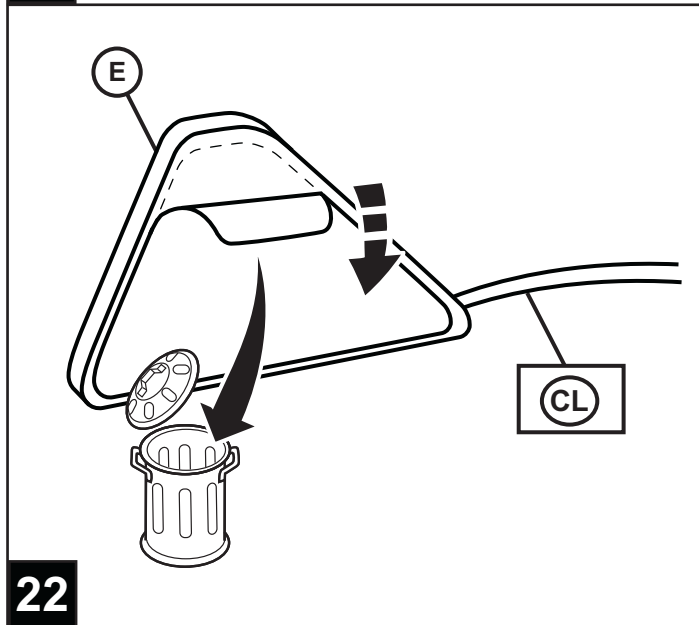
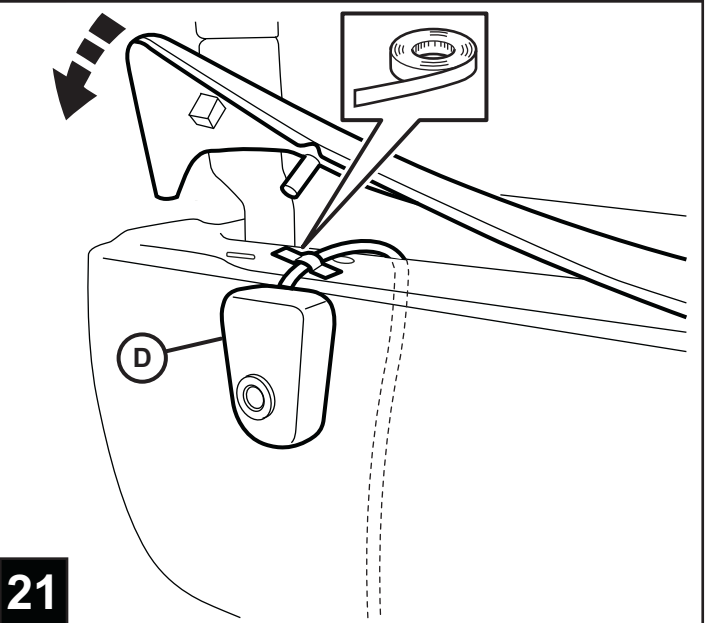
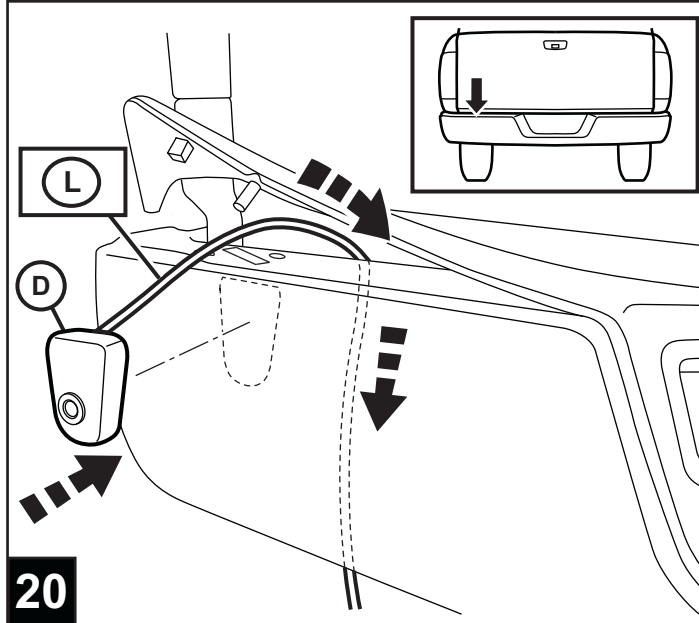
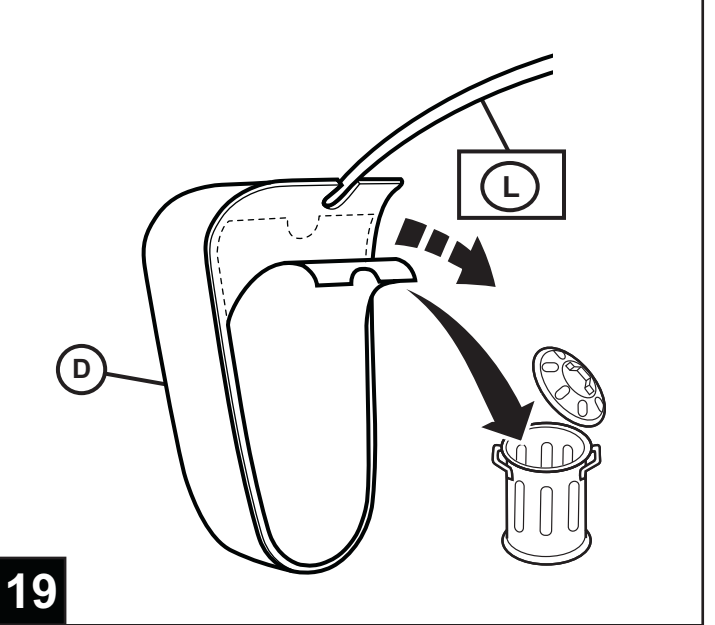
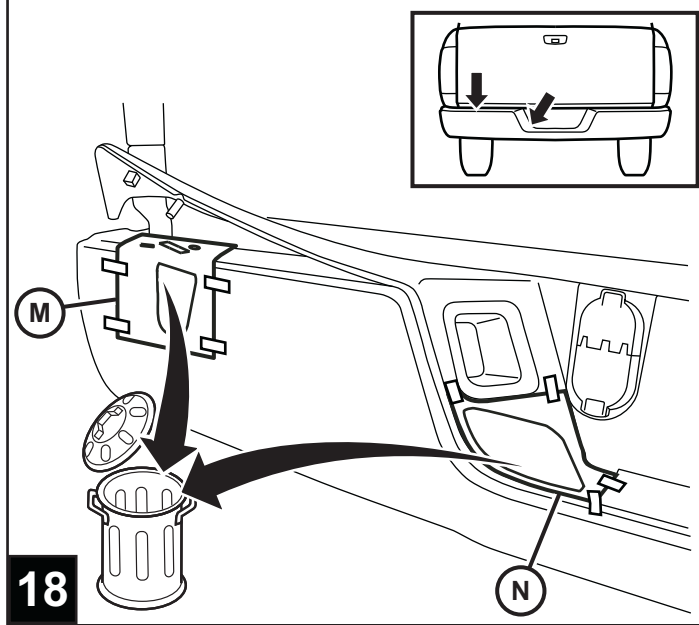
15

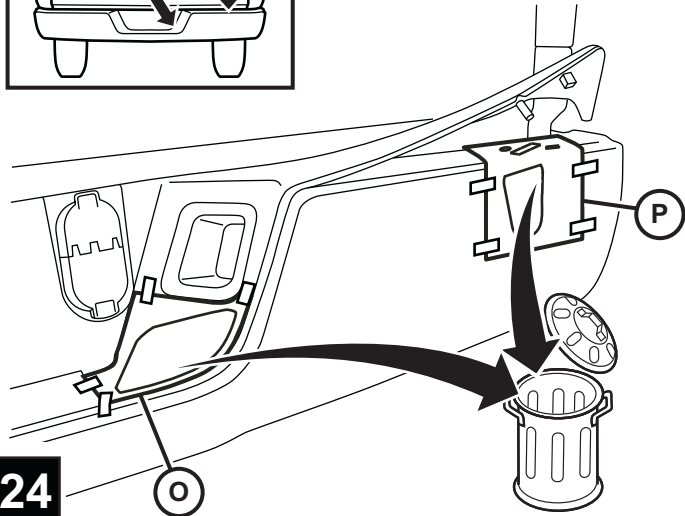
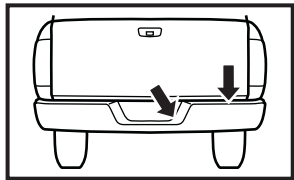


16



17



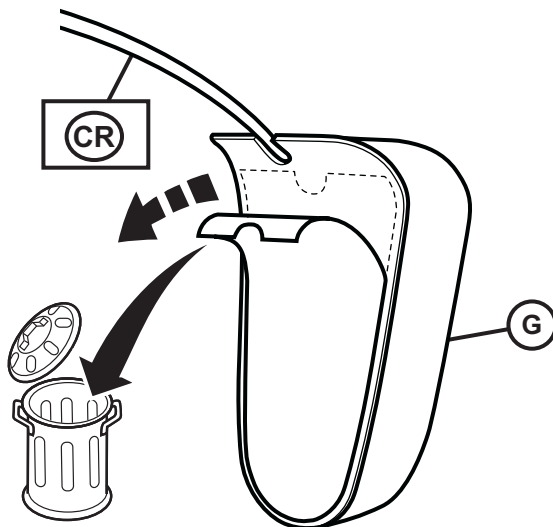


24

O

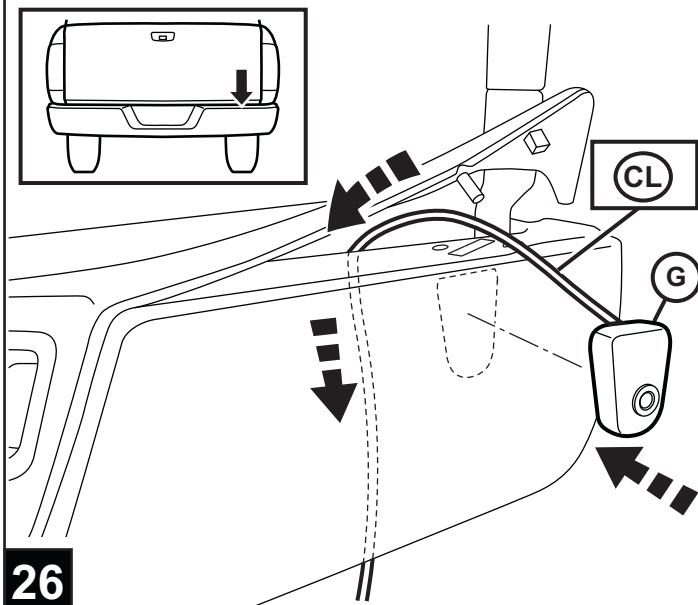
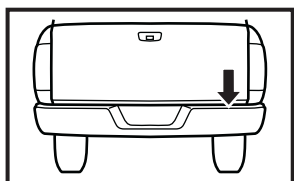
P

25



CR

G

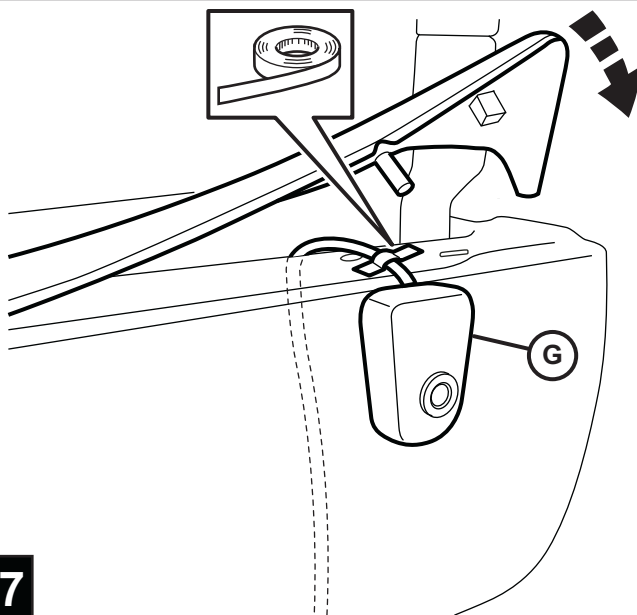


CL

G

26

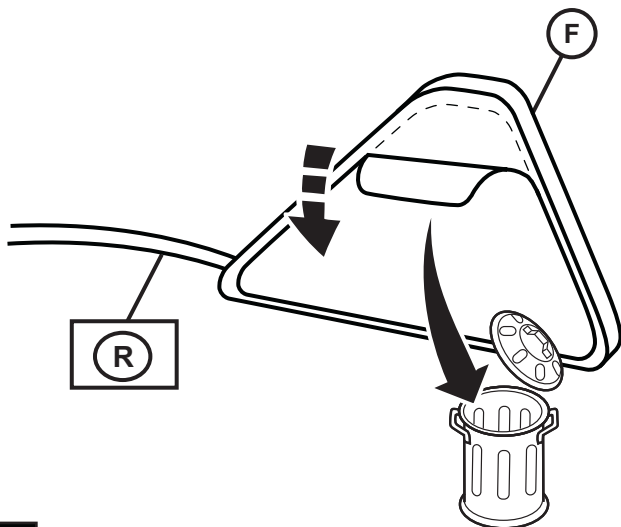
27



G

26

27

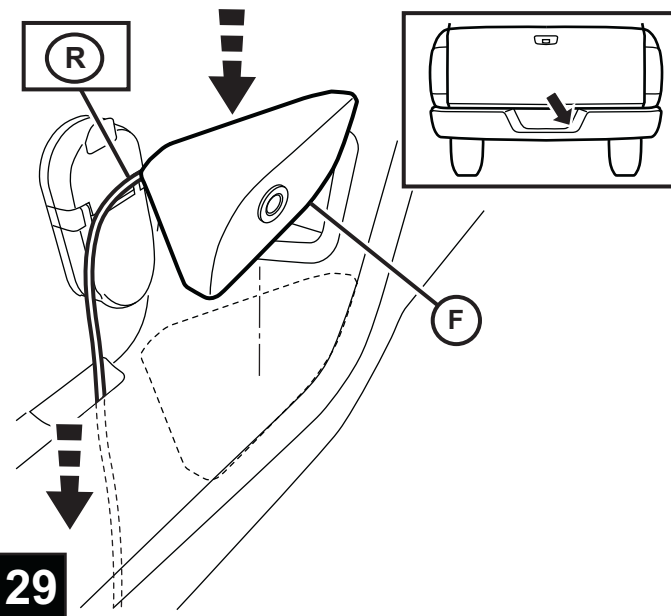


R

F

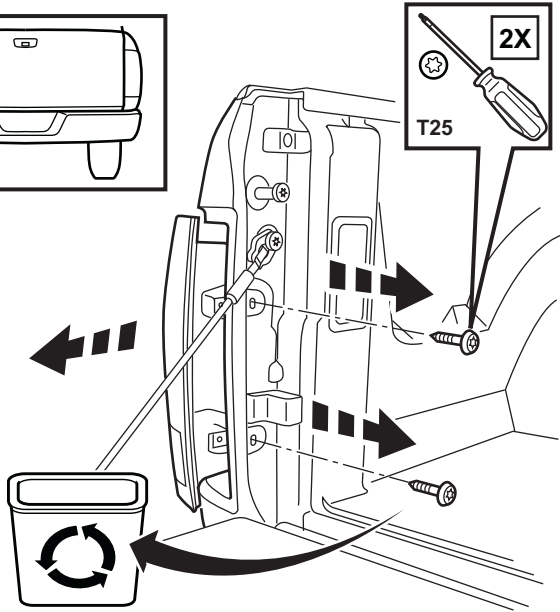
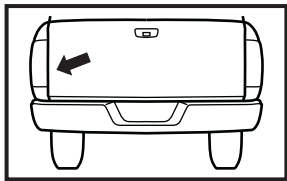
28

29

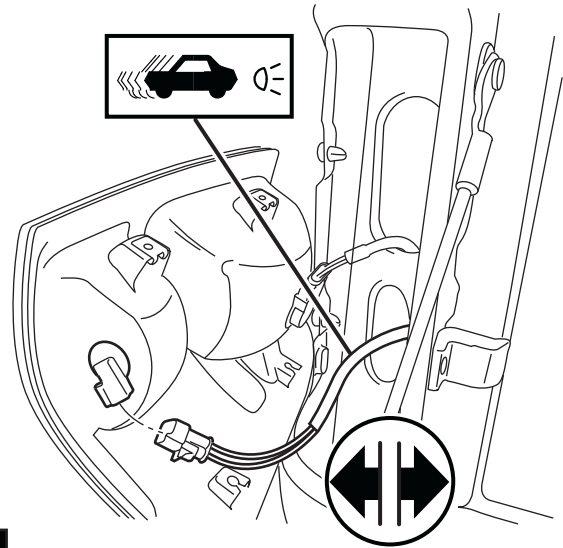


R

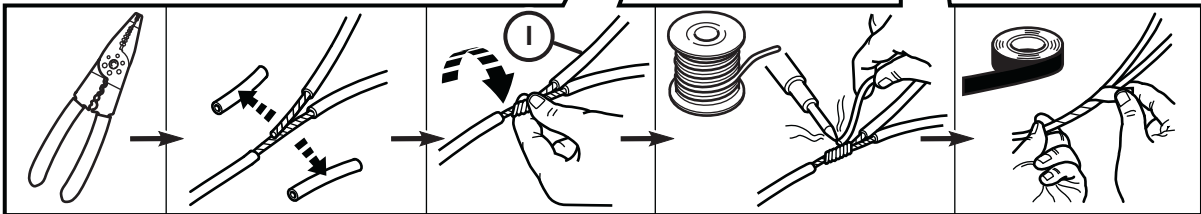
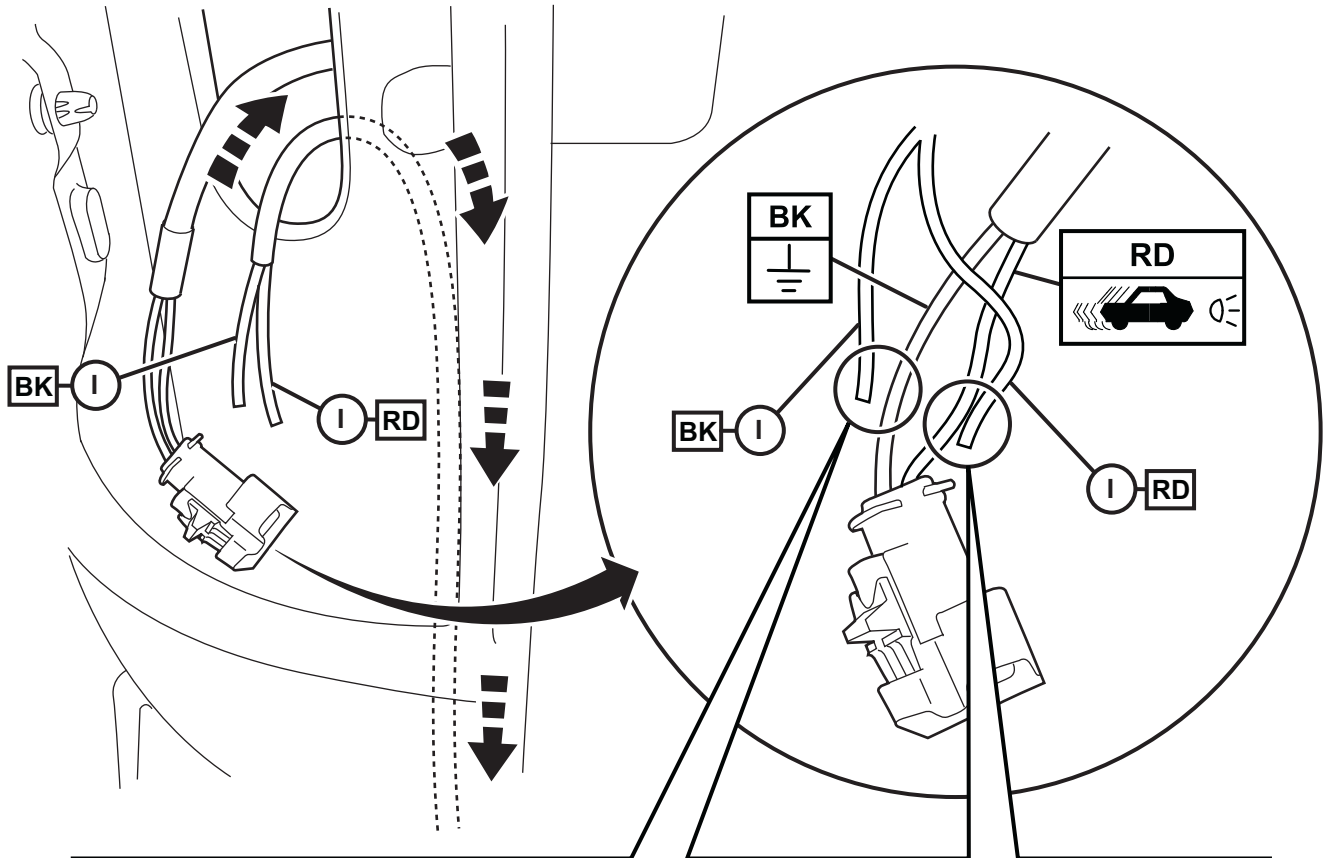
F



30

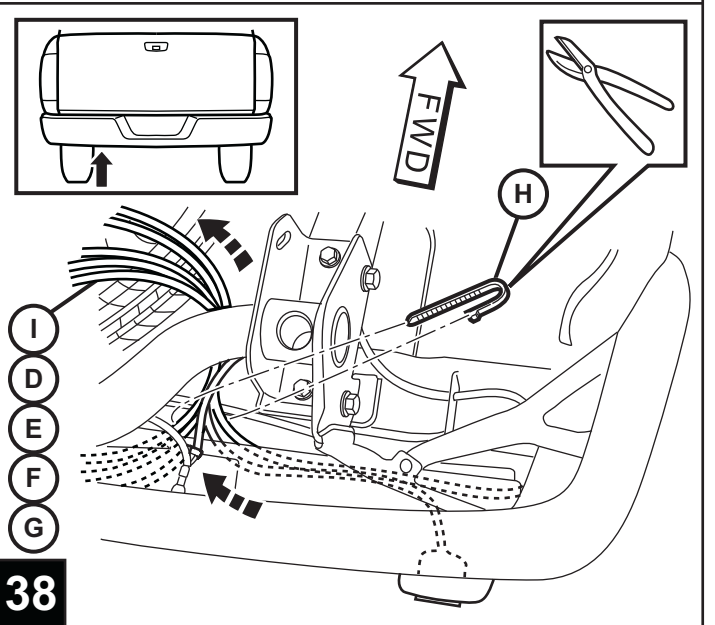
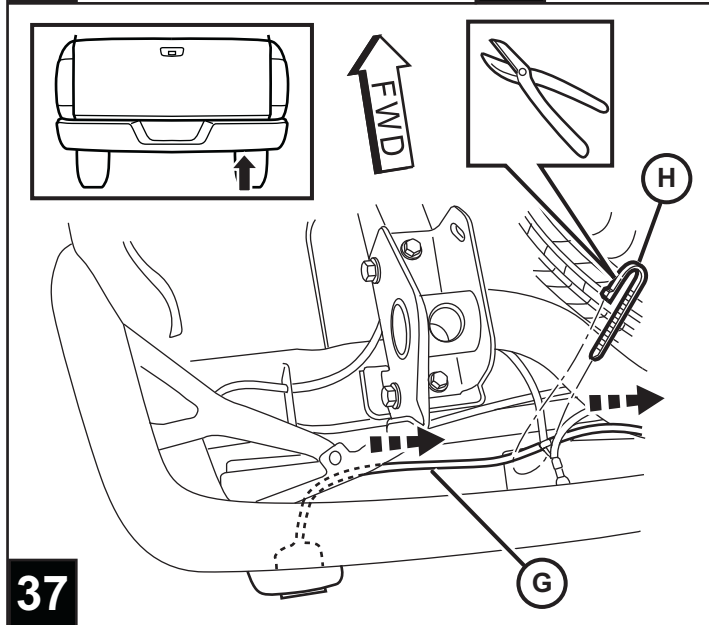
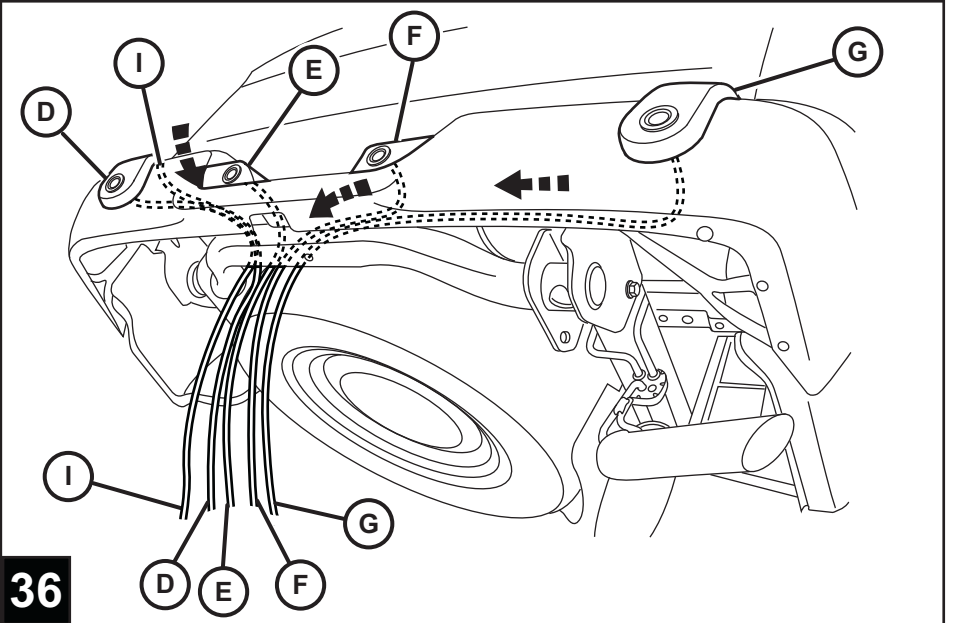
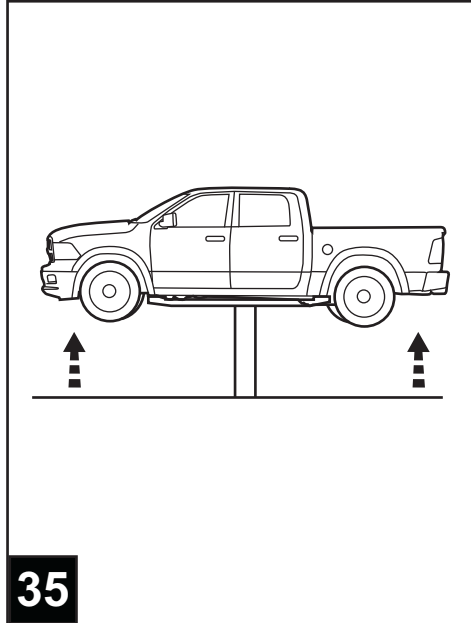
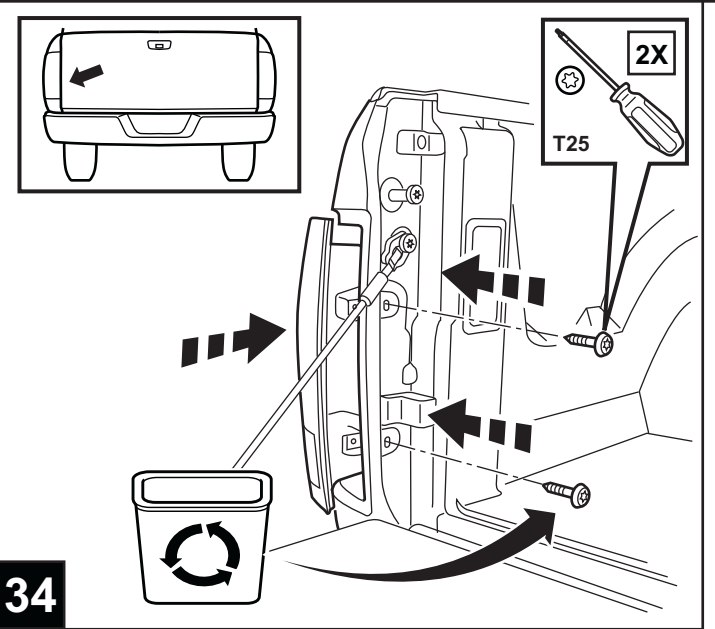
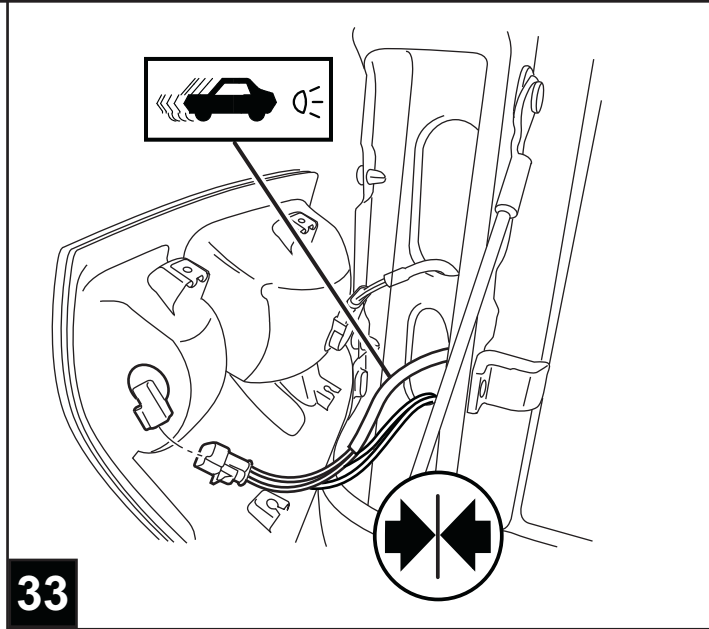


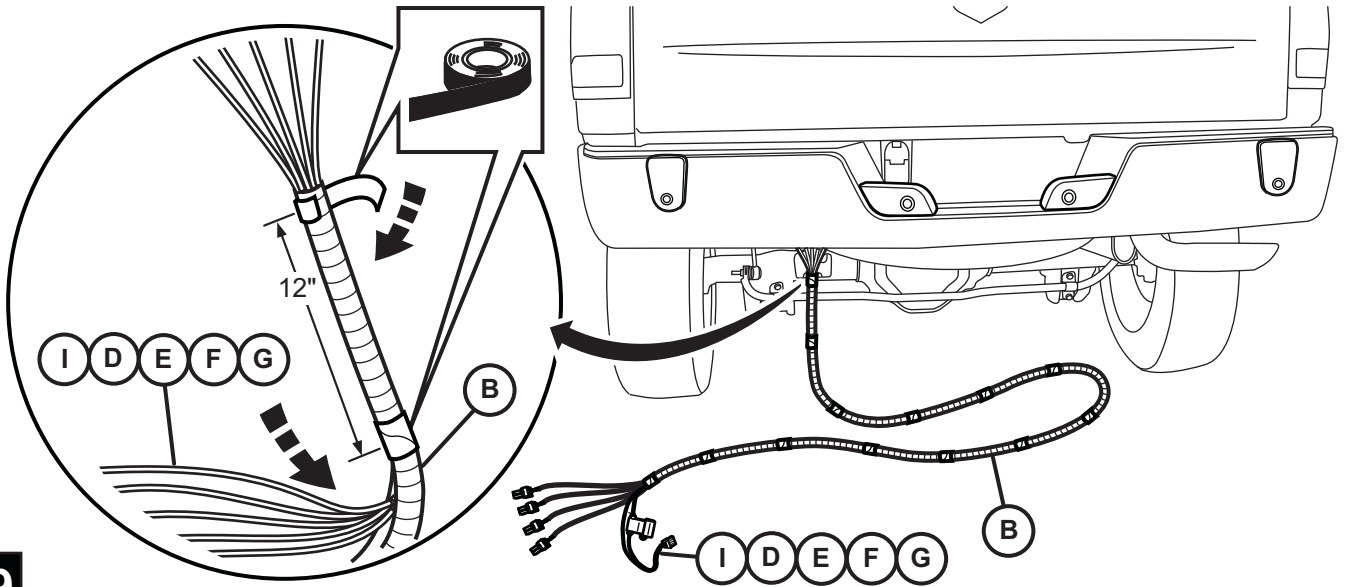
31



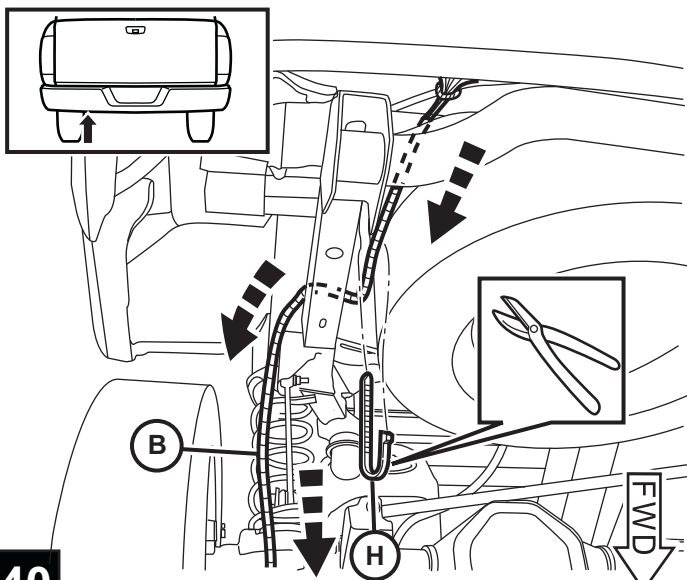
32



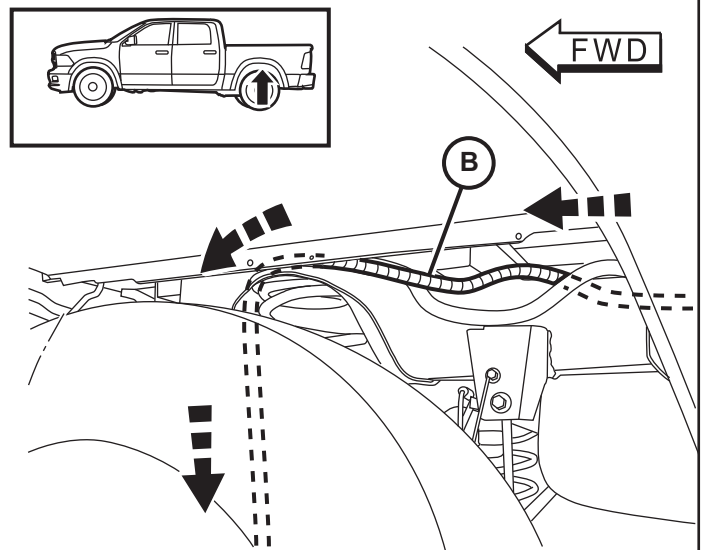




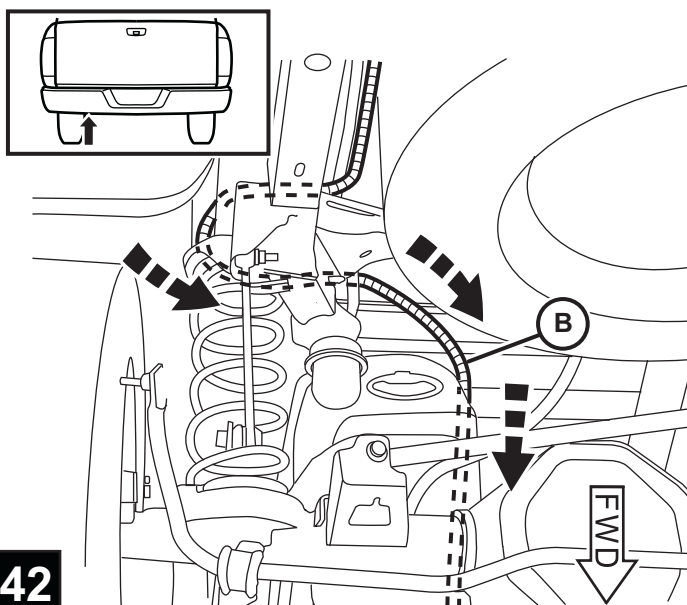
39



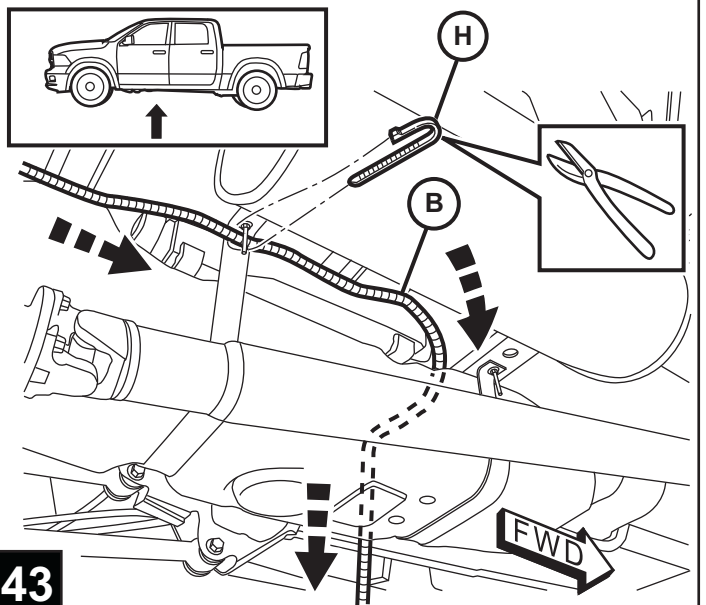
40



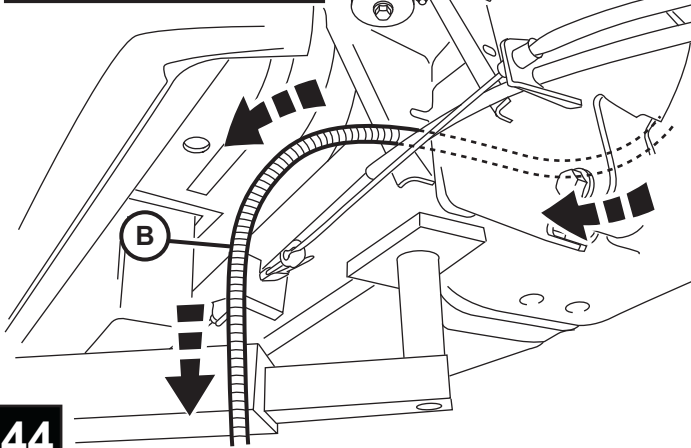
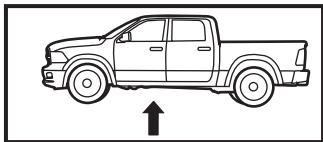
41



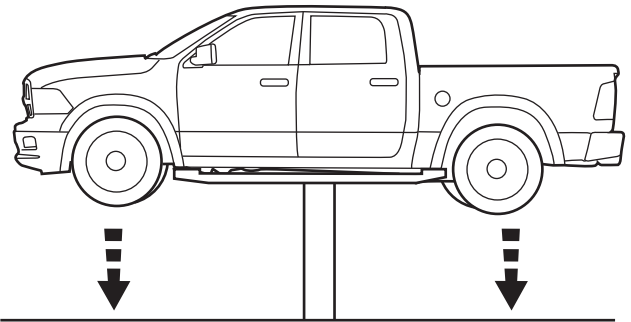
42



43

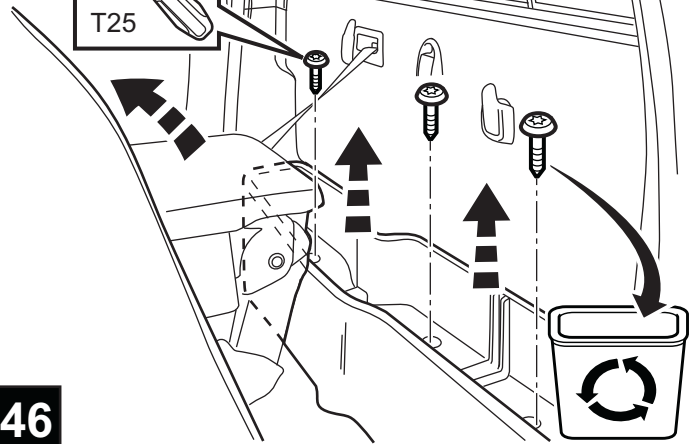
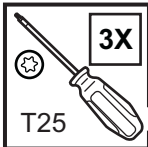
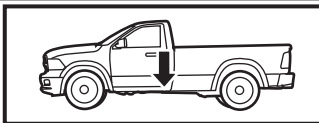


44



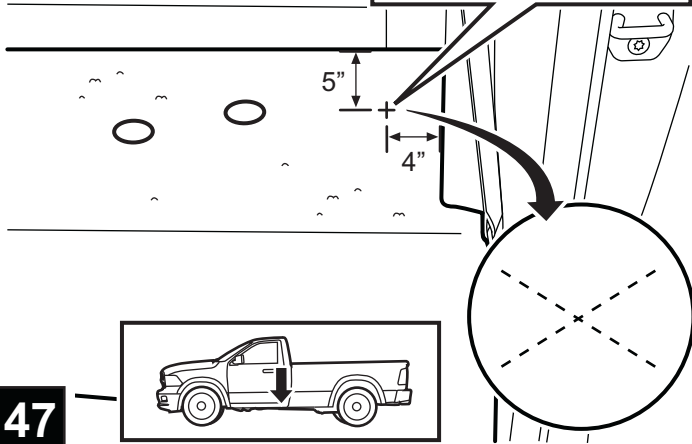
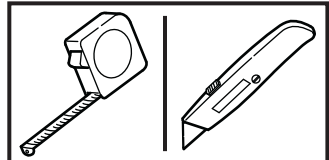
45

STANDARD CAB



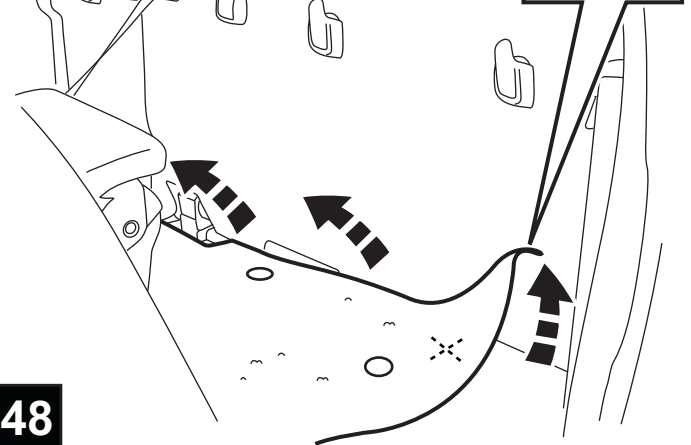
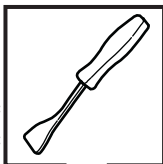
46

STANDARD CAB



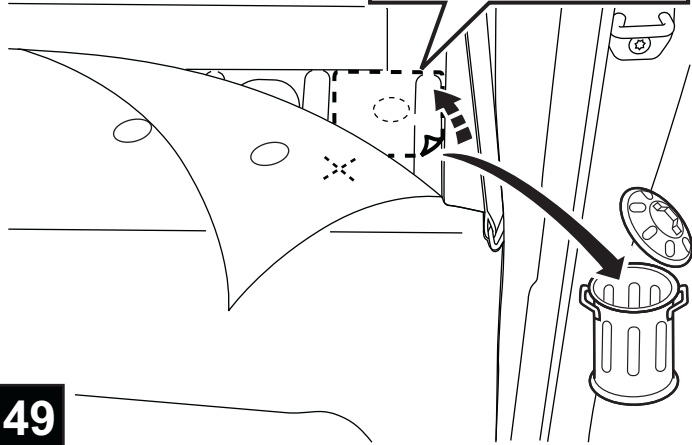
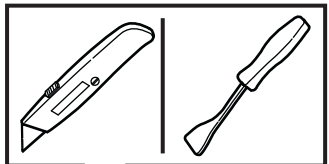
47

STANDARD CAB

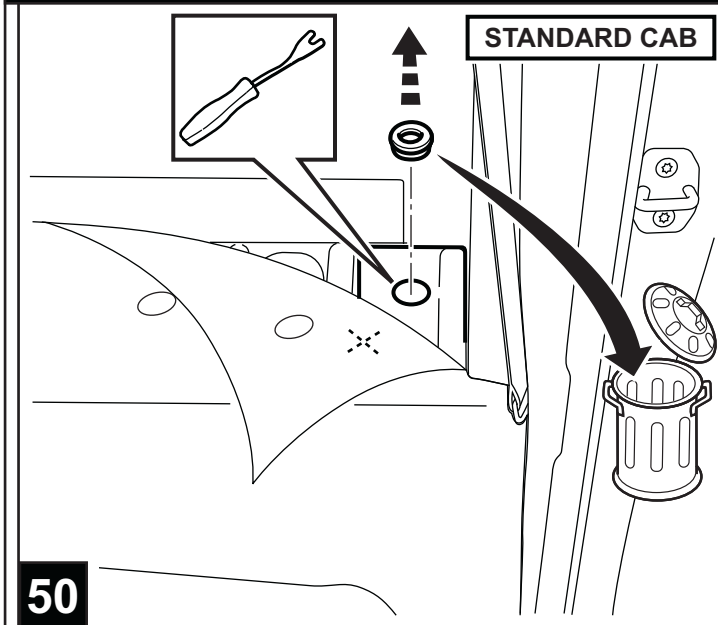


48

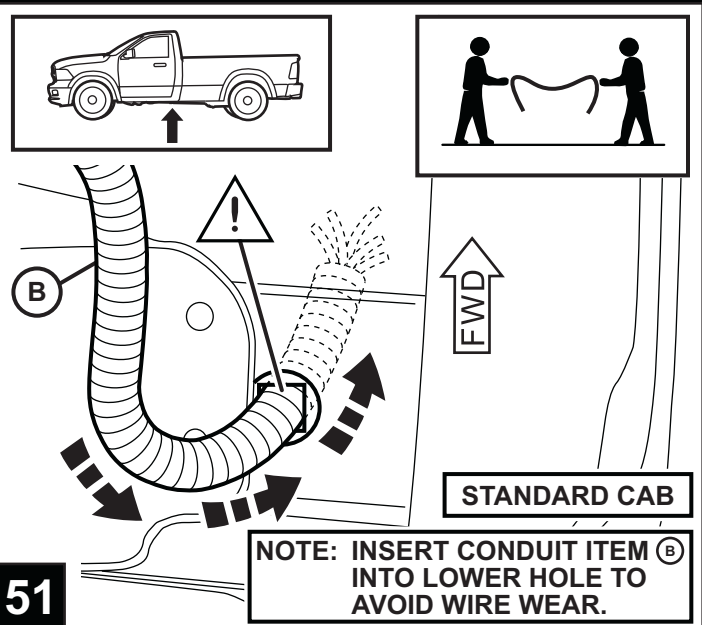
STANDARD CAB



49

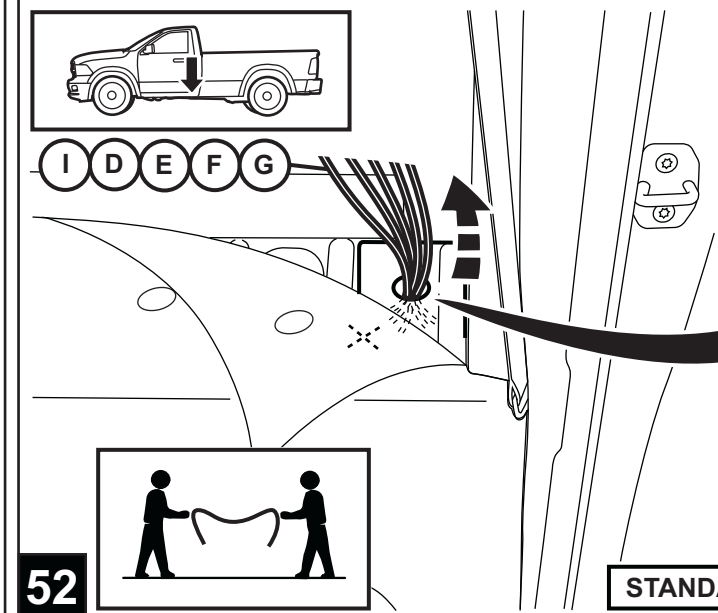


50

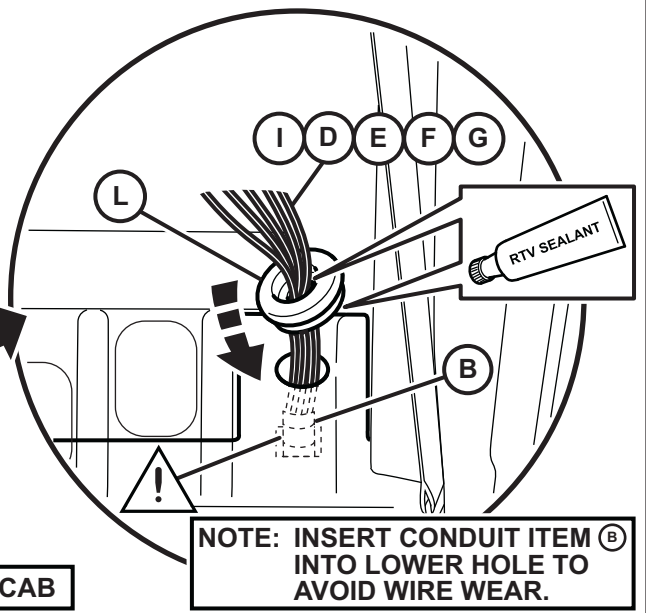


51

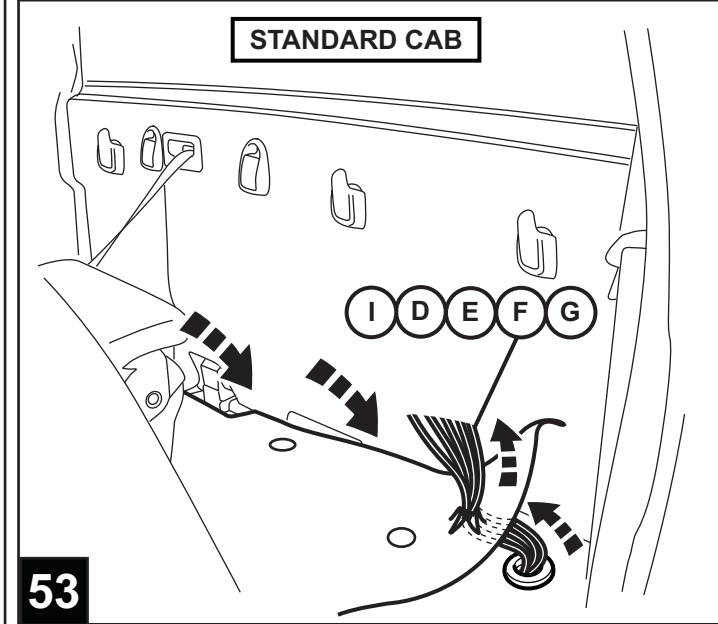
NOTE: INSERT CONDUIT ITEM (B) INTO LOWER HOLE TO AVOID WIRE WEAR.



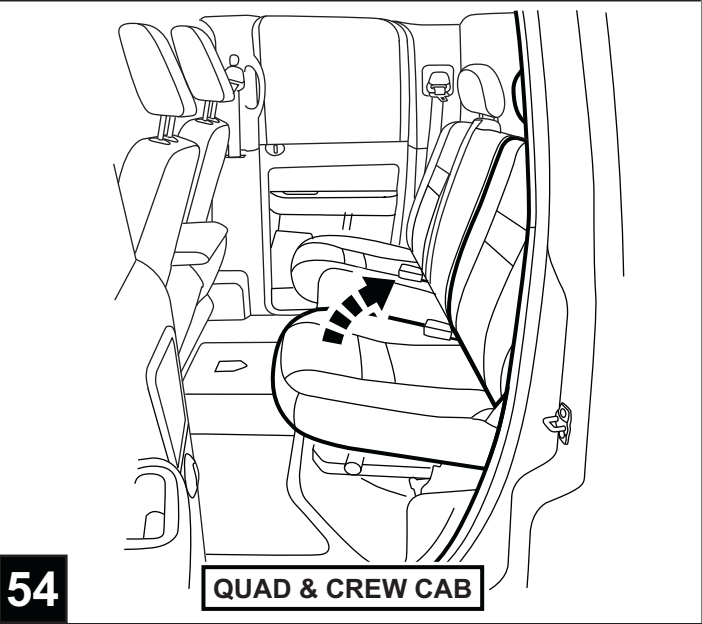
52



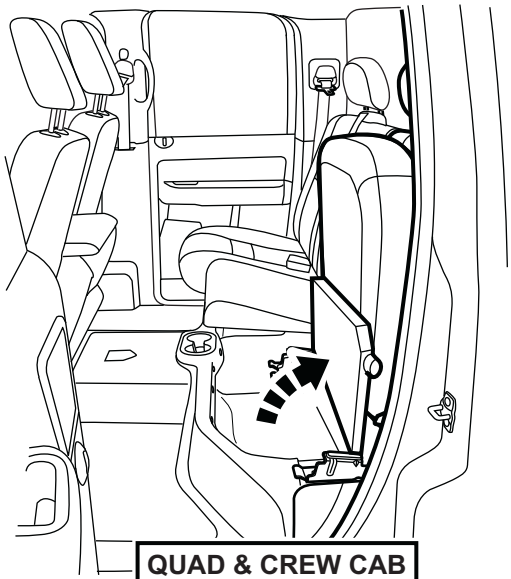
NOTE: INSERT CONDUIT ITEM (B) INTO LOWER HOLE TO AVOID WIRE WEAR.



53

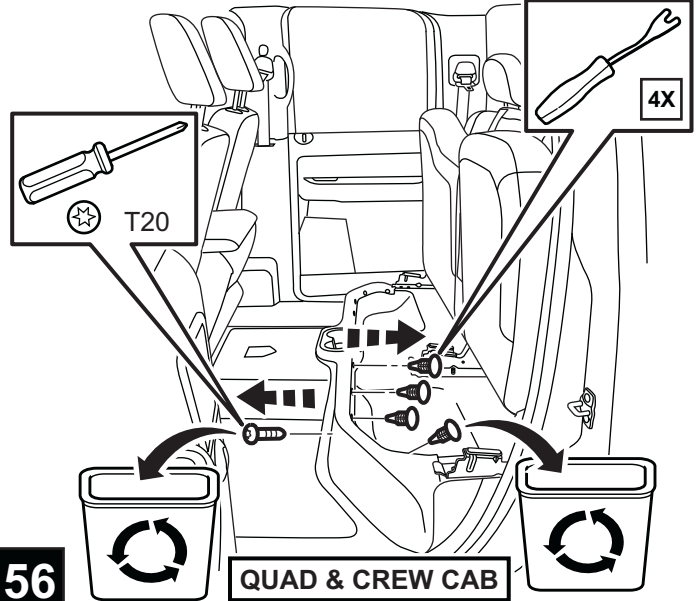


54



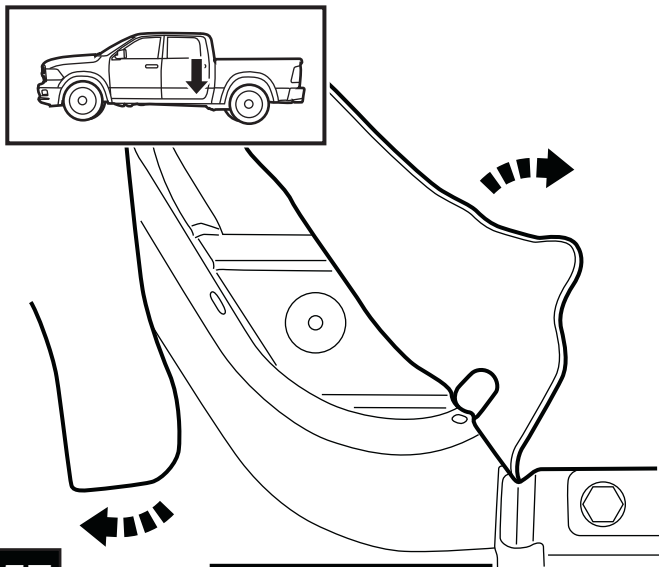
55

QUAD & CREW CAB



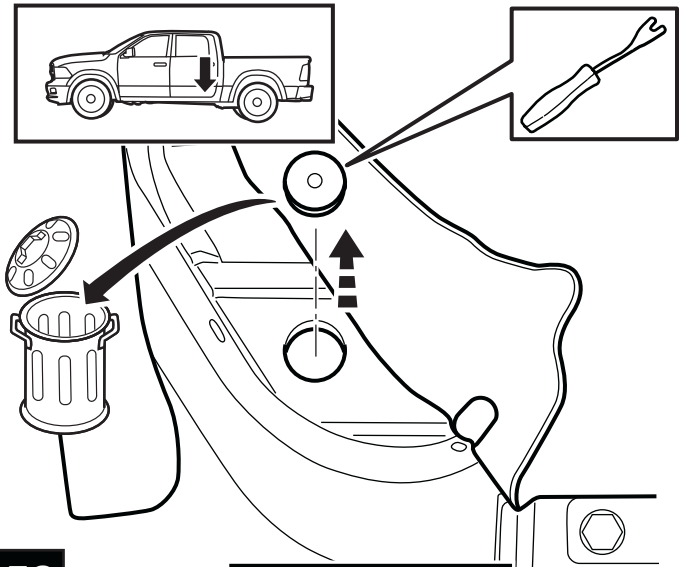
56

QUAD & CREW CAB



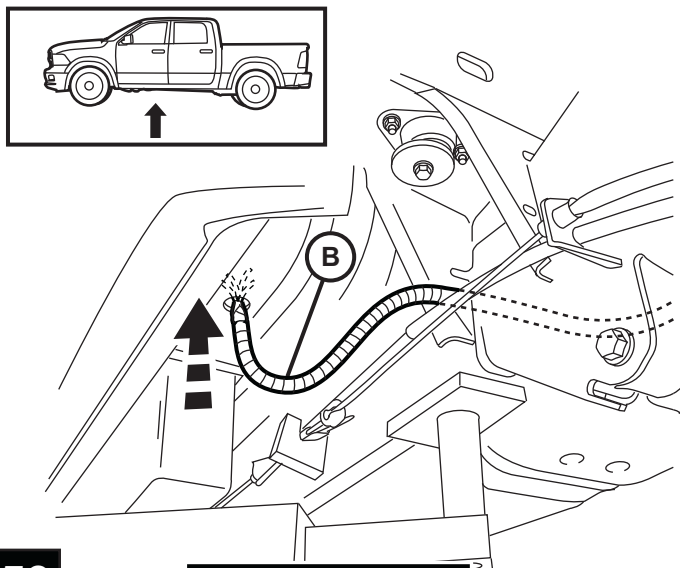
57

QUAD & CREW CAB



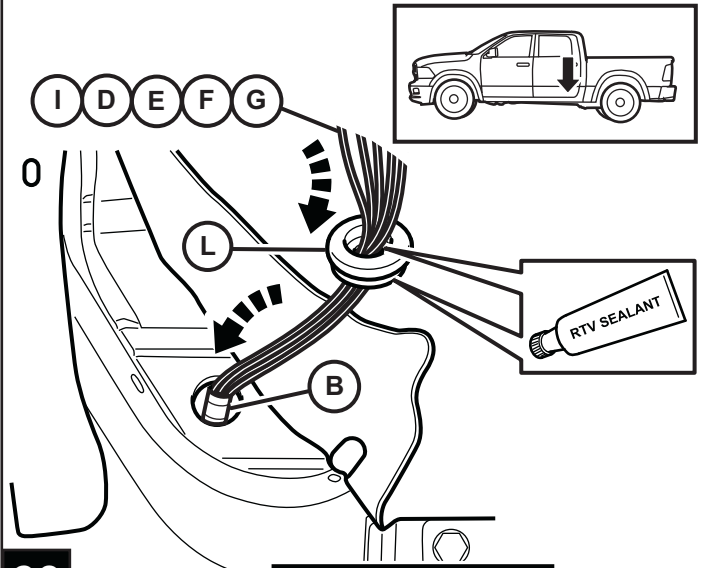
58

QUAD & CREW CAB



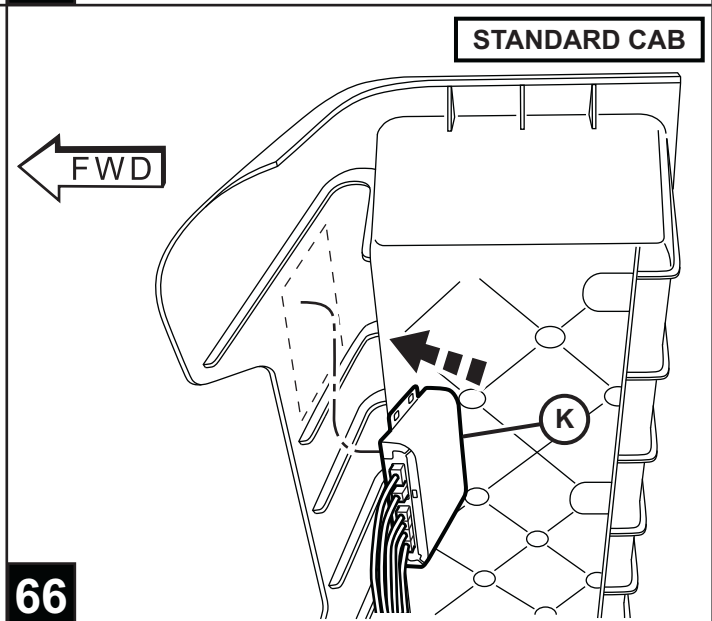
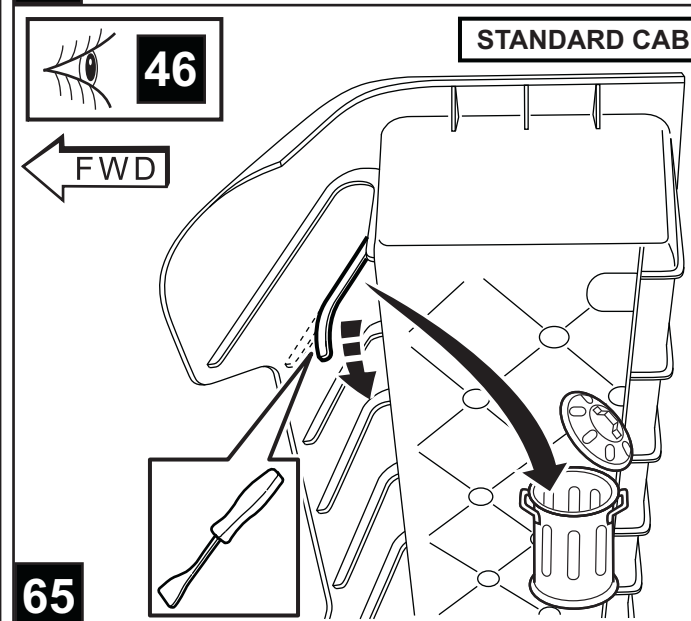
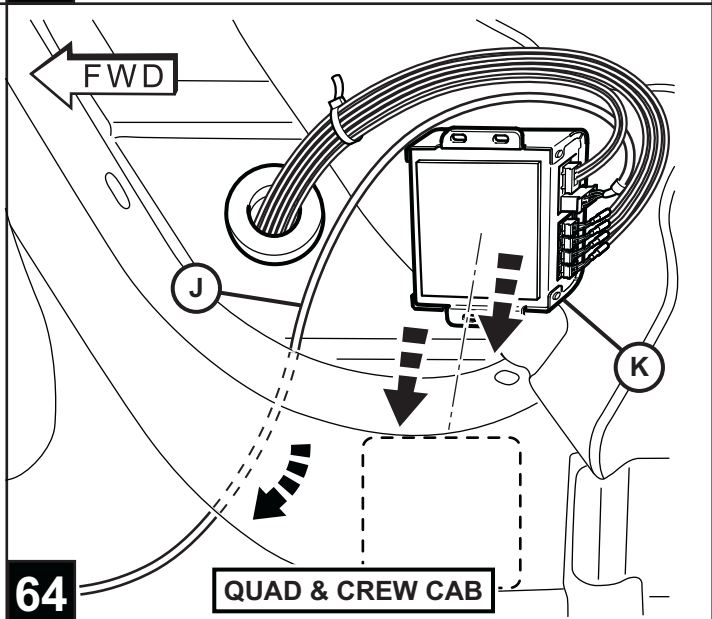
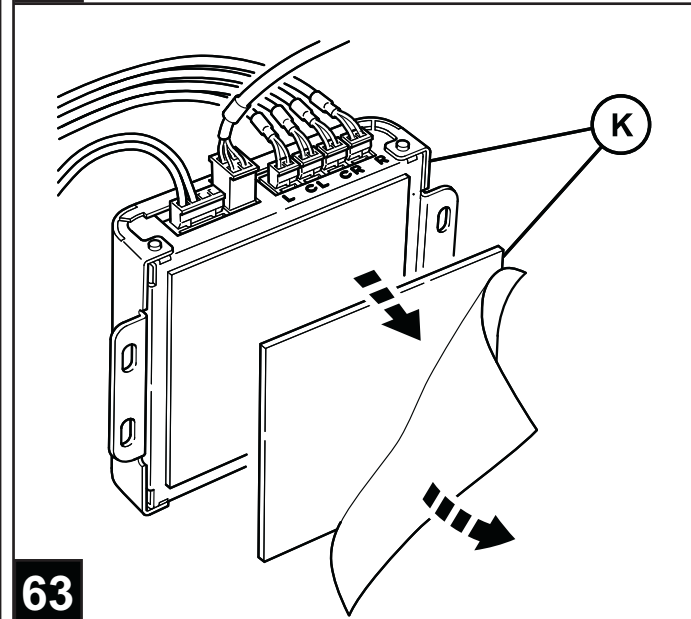
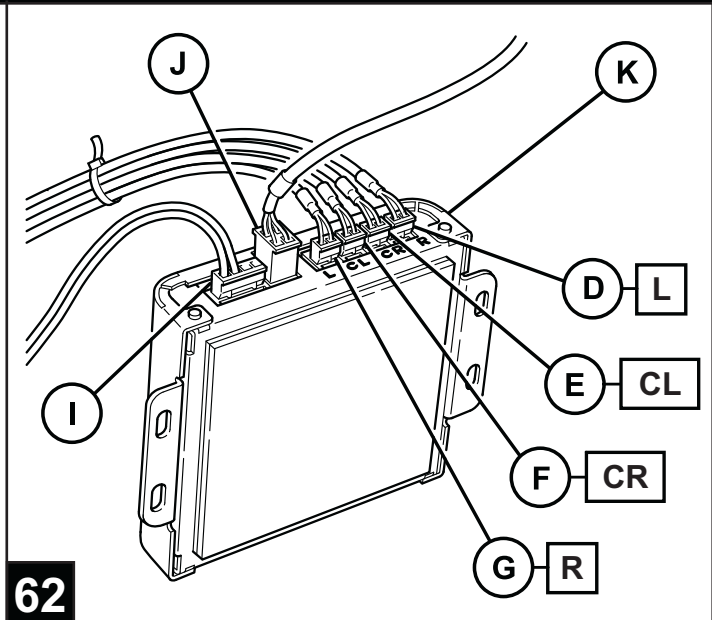
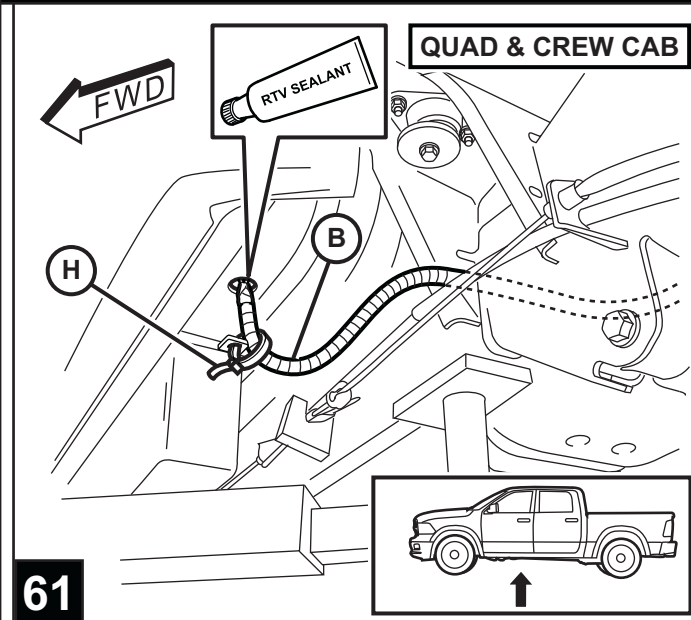
59

QUAD & CREW CAB

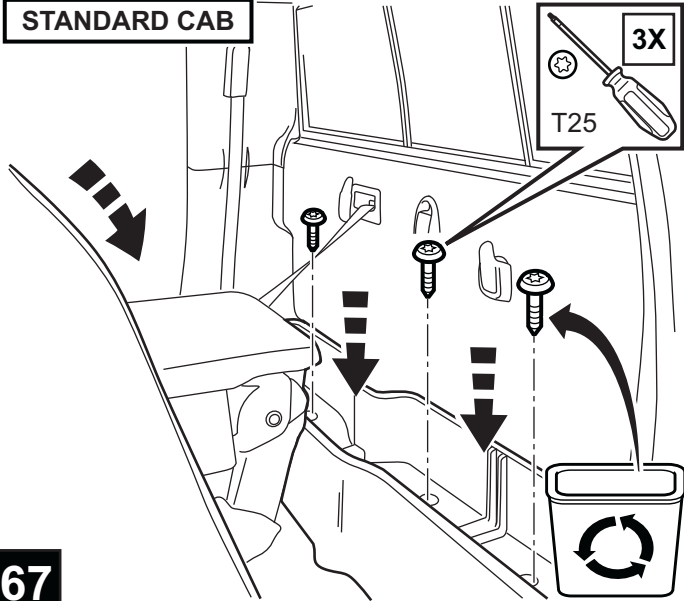


60

QUAD & CREW CAB

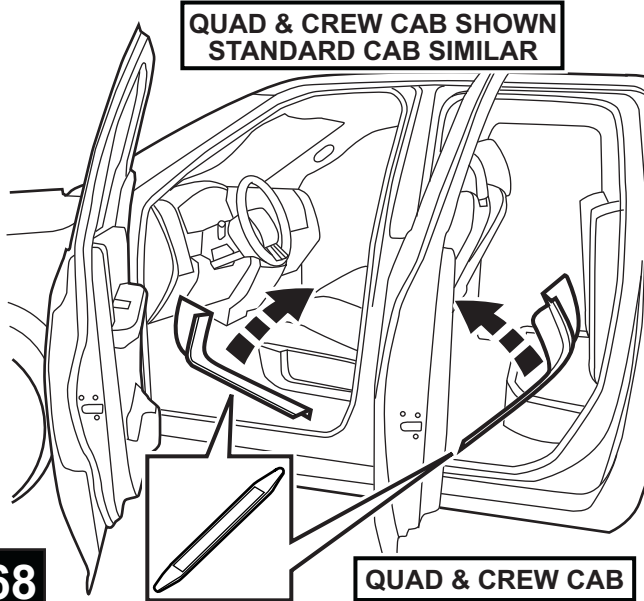


STANDARD CAB



67

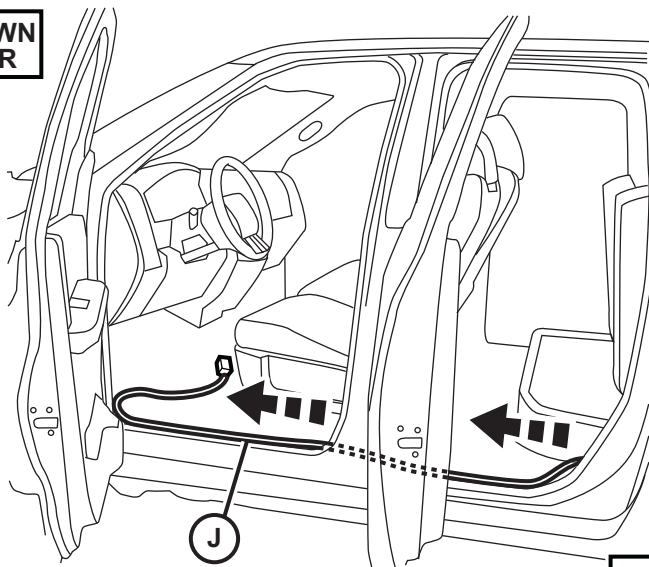
QUAD & CREW CAB SHOWN  
STANDARD CAB SIMILAR



68

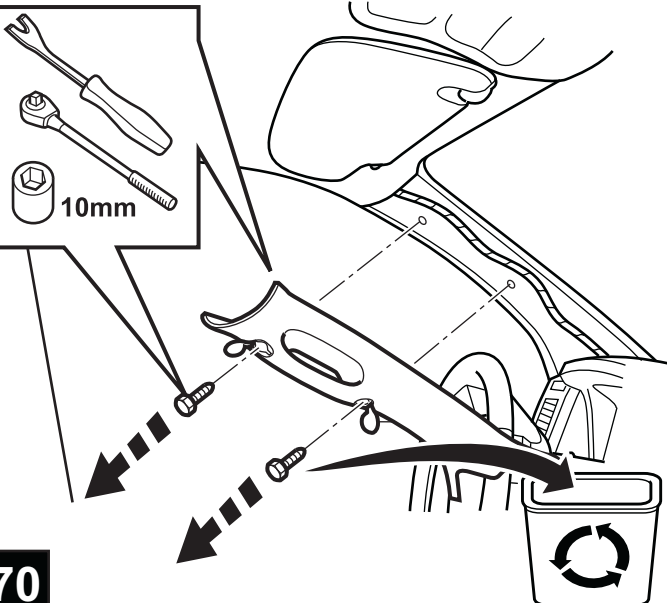
QUAD & CREW CAB

QUAD & CREW CAB SHOWN  
STANDARD CAB SIMILAR

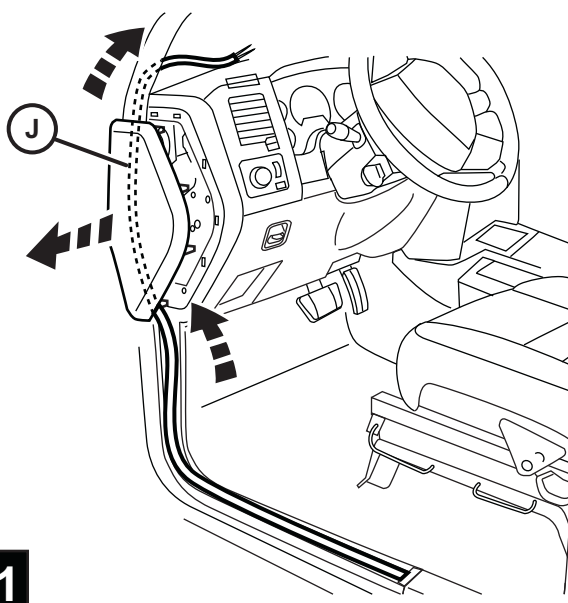


69

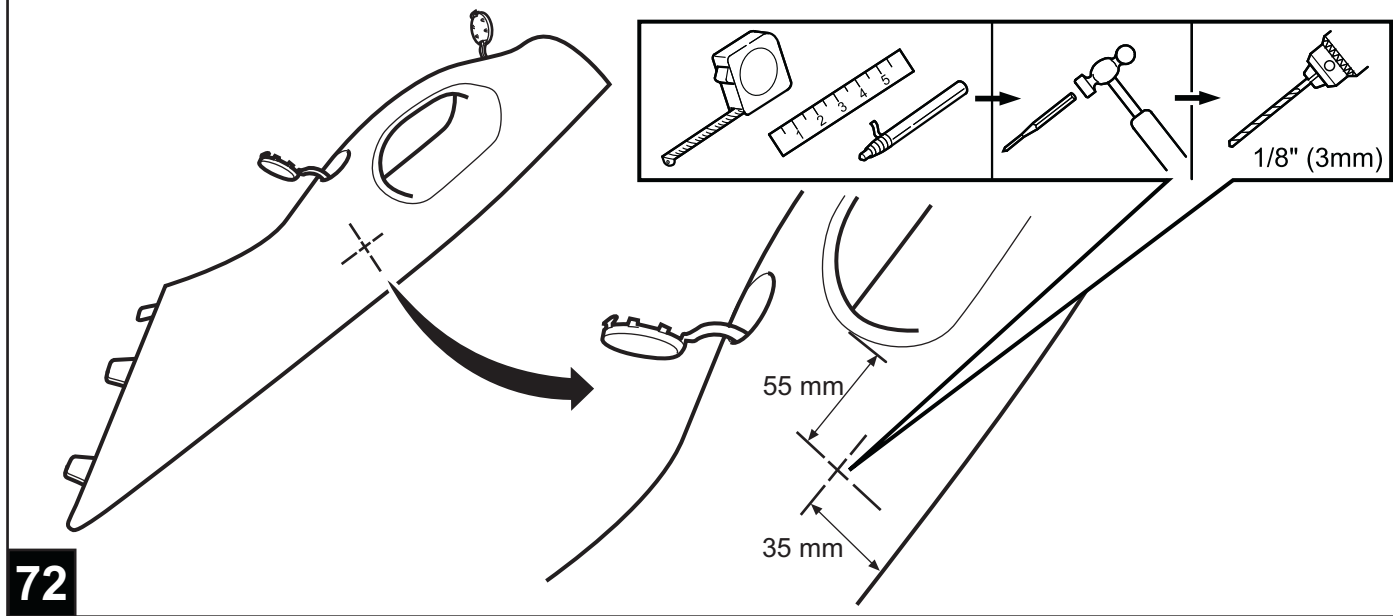
QUAD & CREW CAB



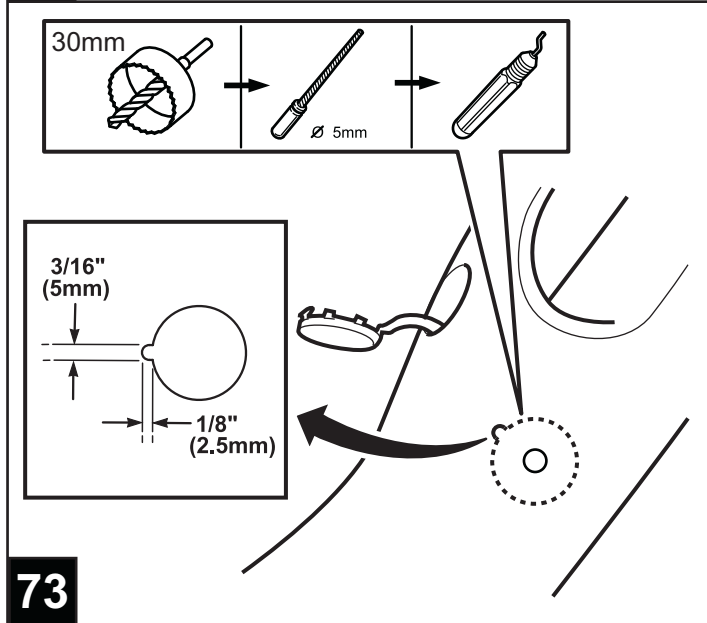
70



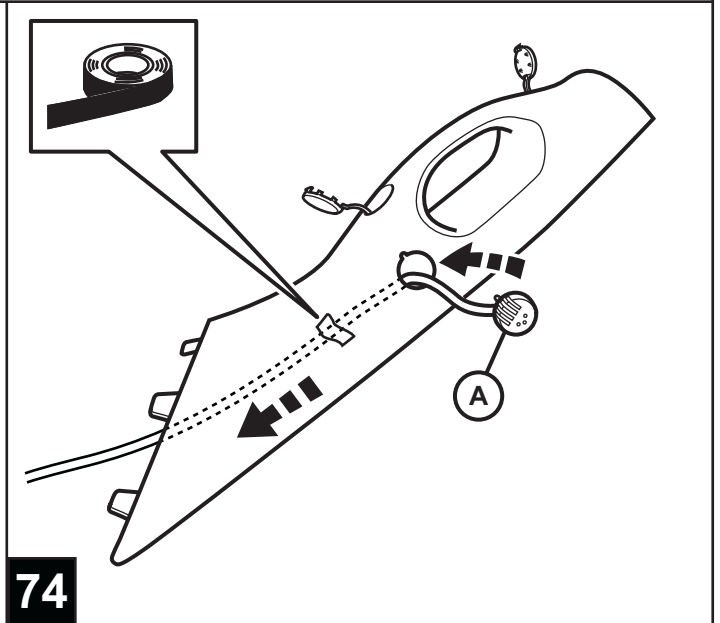
71



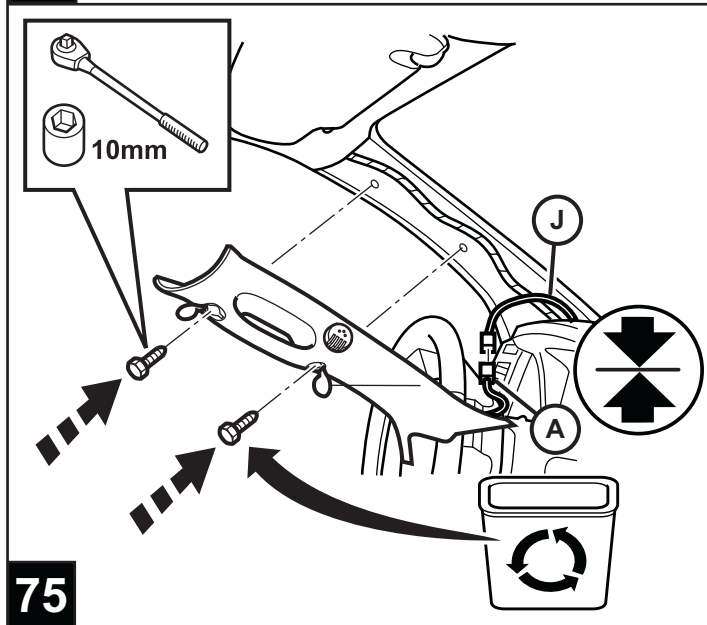
72



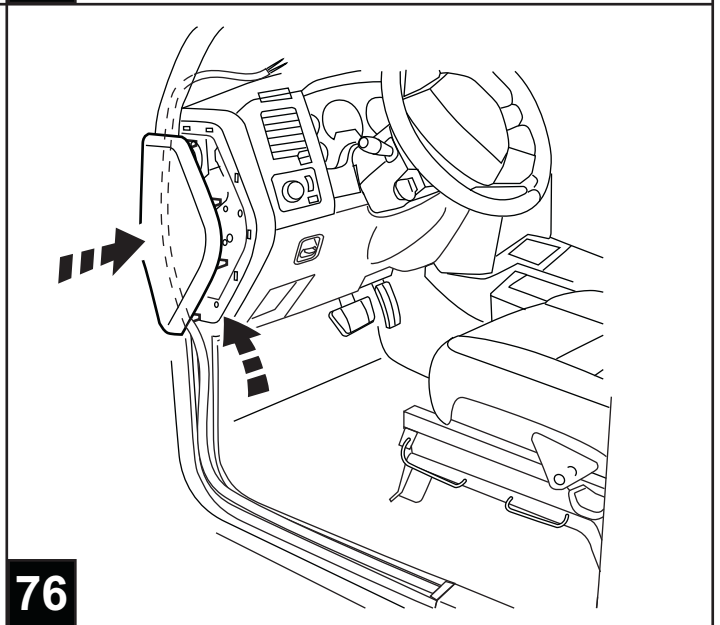
73



74



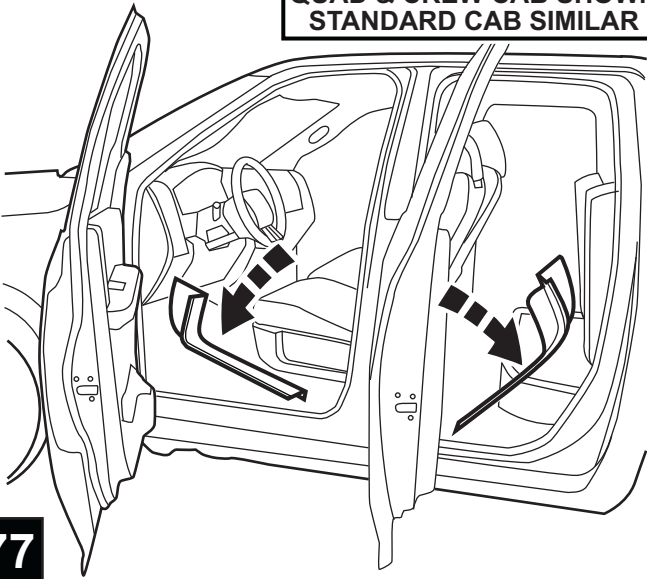
75



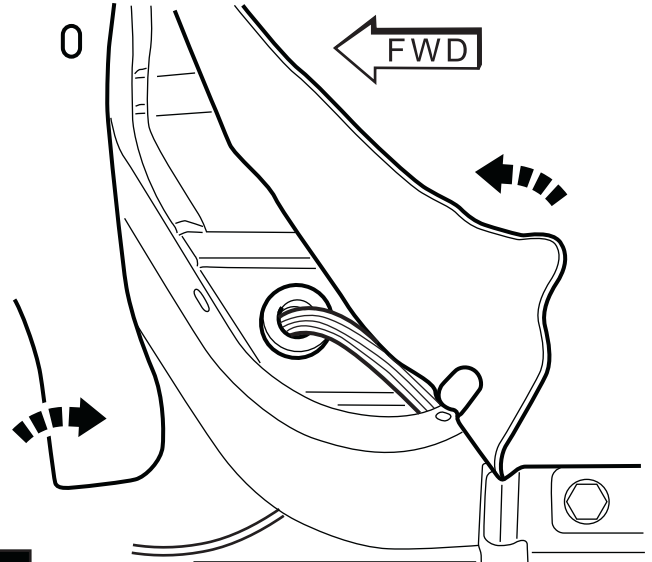
76



QUAD & CREW CAB SHOWN  
STANDARD CAB SIMILAR

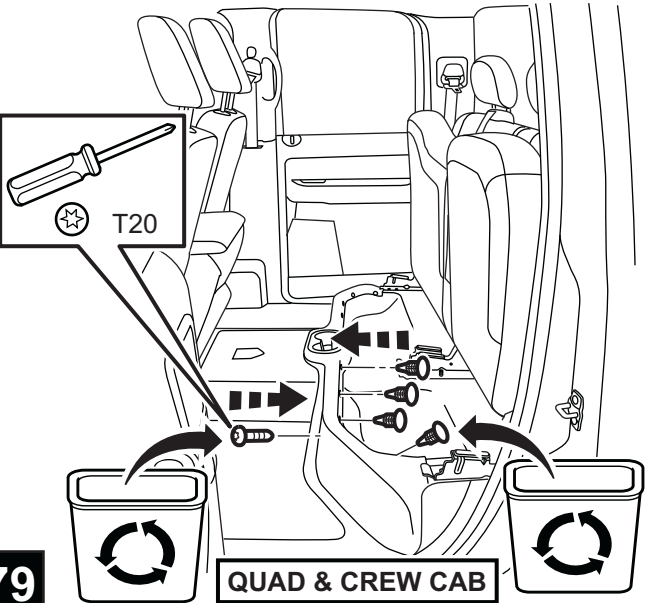


77



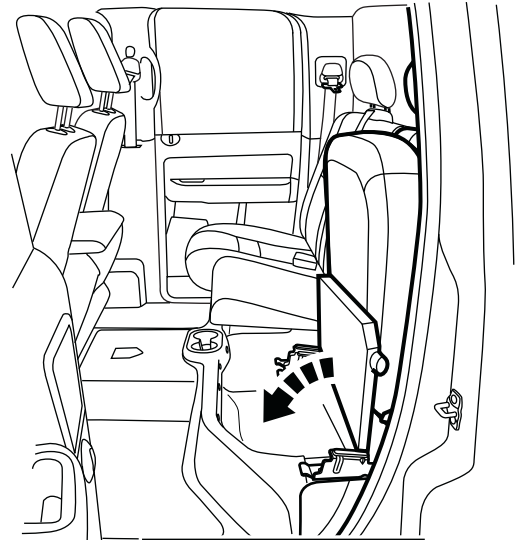
78

QUAD & CREW CAB



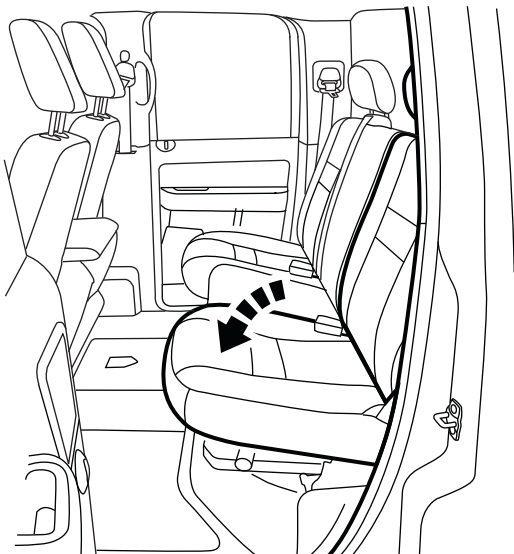
79

QUAD & CREW CAB



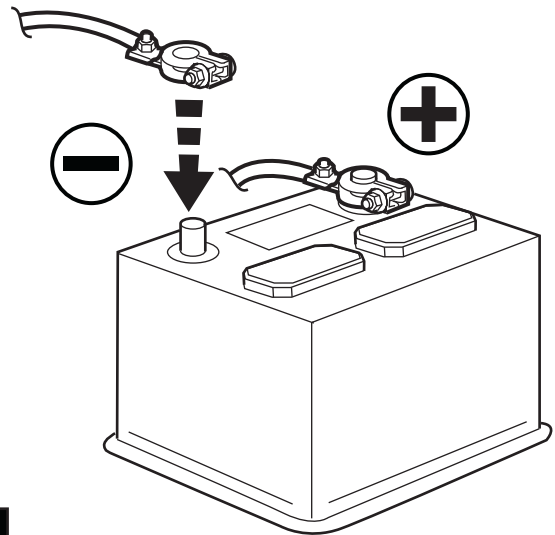
80

QUAD & CREW CAB



81

QUAD & CREW CAB



82

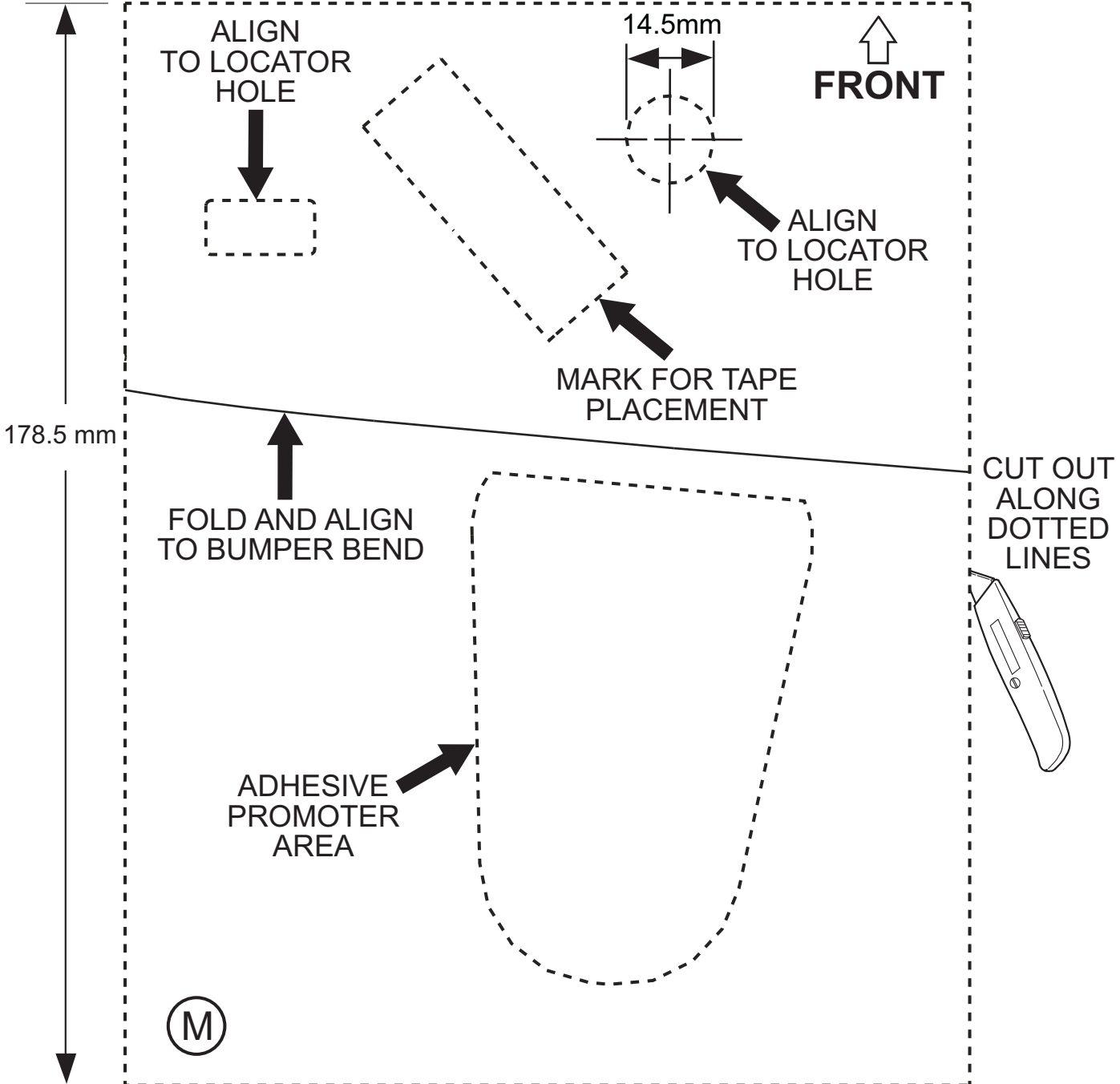
# DODGE RAM

## REAR SENSING SYSTEM TEMPLATE



DRIVER'S  
SIDE OUTBOARD

139.4 mm



178.5 mm



inches	1	2	3	4
	10	20	30	40
	50	60	70	80
	90	100		
millimeters				
CHECK SCALE BEFORE USING THIS TEMPLATE				

**DOUBLE CHECK TEMPLATE  
MEASUREMENTS  
AFTER PRINTING TO ENSURE  
ACCURATE SCALING.**

# DODGE RAM REAR SENSING SYSTEM TEMPLATE

CL

DRIVER'S  
SIDE INBOARD

ALIGN TO  
FOOTPAD  
EDGE

ALIGN  
TO EDGE

FRONT

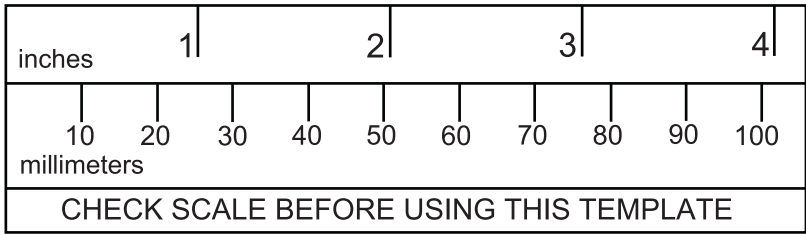
196.2 mm

CUT OUT  
ALONG  
DOTTED  
LINES

ALIGN  
TO GAP

N

111.1 mm



**DOUBLE CHECK TEMPLATE  
MEASUREMENTS  
AFTER PRINTING TO ENSURE  
ACCURATE SCALING.**

# DODGE RAM

## REAR SENSING SYSTEM TEMPLATE

CR

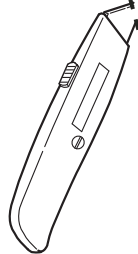
PASSENGER'S  
SIDE INBOARD

ALIGN  
TO EDGE

ALIGN TO  
FOOTPAD  
EDGE

FRONT

196.2 mm

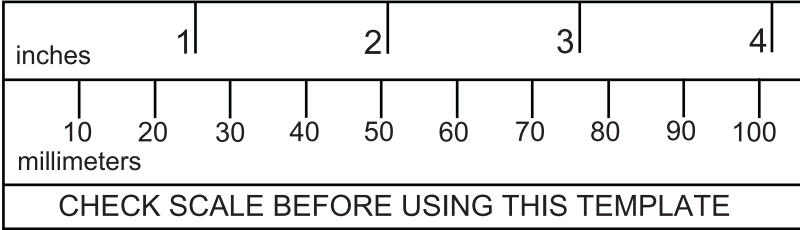


CUT OUT  
ALONG  
DOTTED  
LINES

ALIGN  
TO GAP



111.1 mm



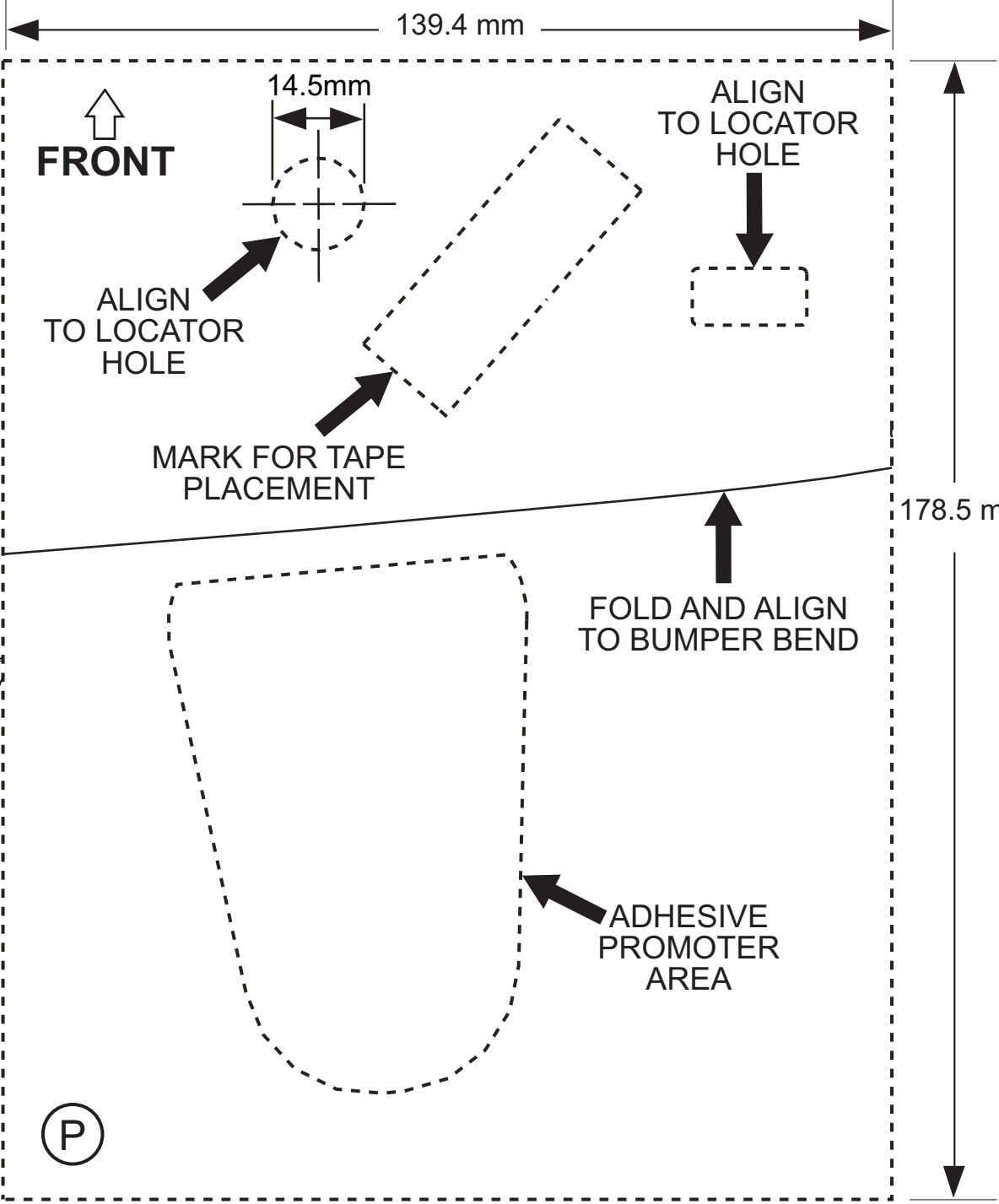
**DOUBLE CHECK TEMPLATE MEASUREMENTS AFTER PRINTING TO ENSURE ACCURATE SCALING.**

# DODGE RAM

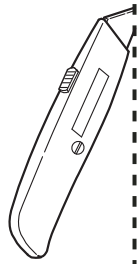
## REAR SENSING SYSTEM TEMPLATE

(R)

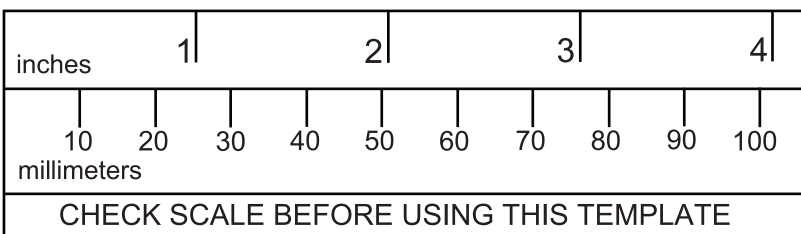
PASSENGER'S  
SIDE OUTBOARD



CUT OUT  
ALONG  
DOTTED  
LINES



(P)



**DOUBLE CHECK TEMPLATE  
MEASUREMENTS  
AFTER PRINTING TO ENSURE  
ACCURATE SCALING.**