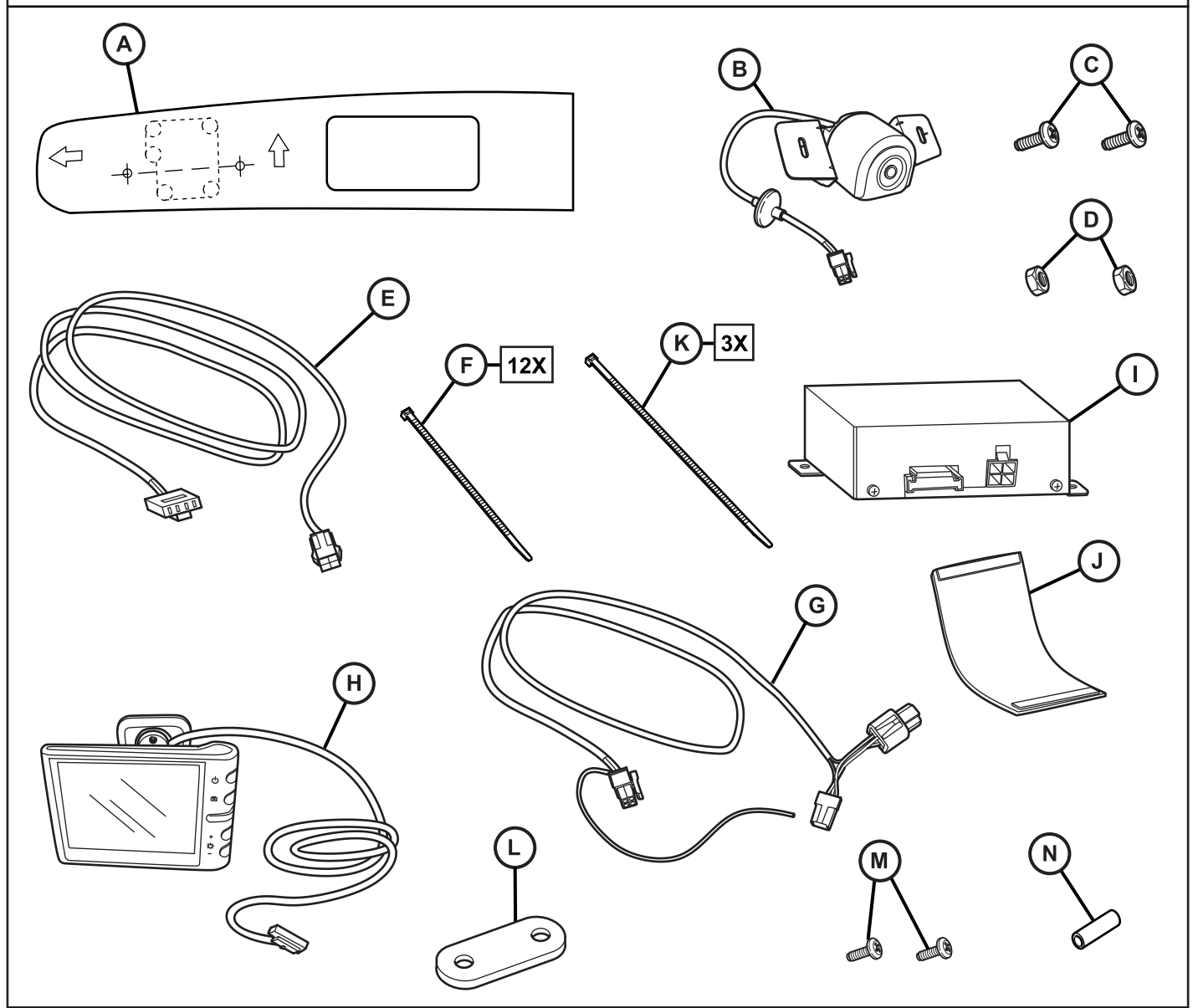


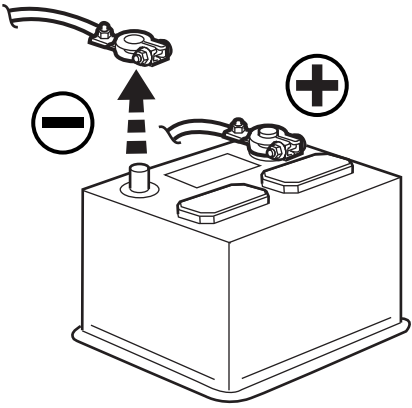


DODGE JOURNEY

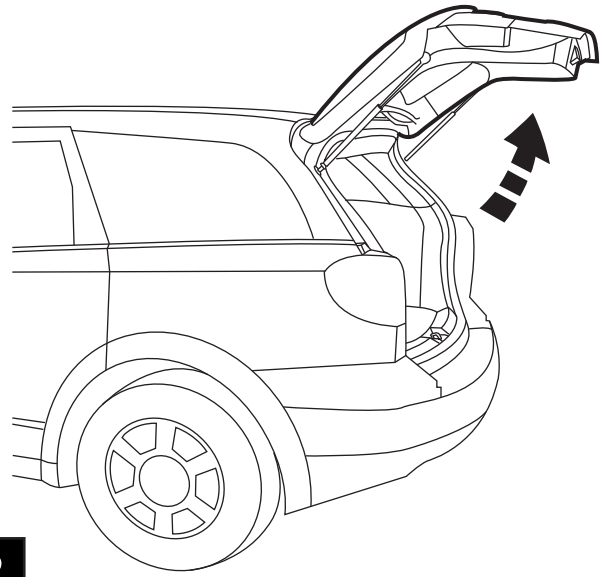
Rear Backup Camera Kit

<p>T-20 T-25 T-30</p>			<p>7mm 10mm 13/16"</p>				
							<p>PN 82300508</p>
					<p>5/8" (15mm)</p>	<p>1/8" (3mm) 3/8" (9mm)</p>	

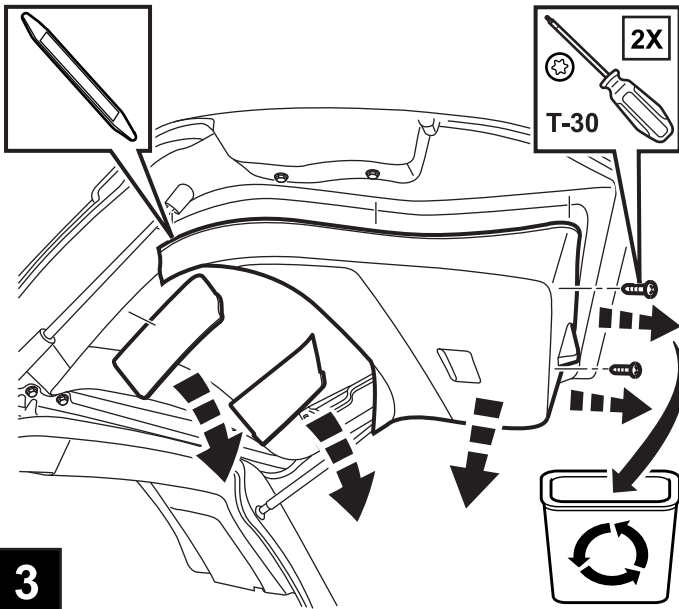




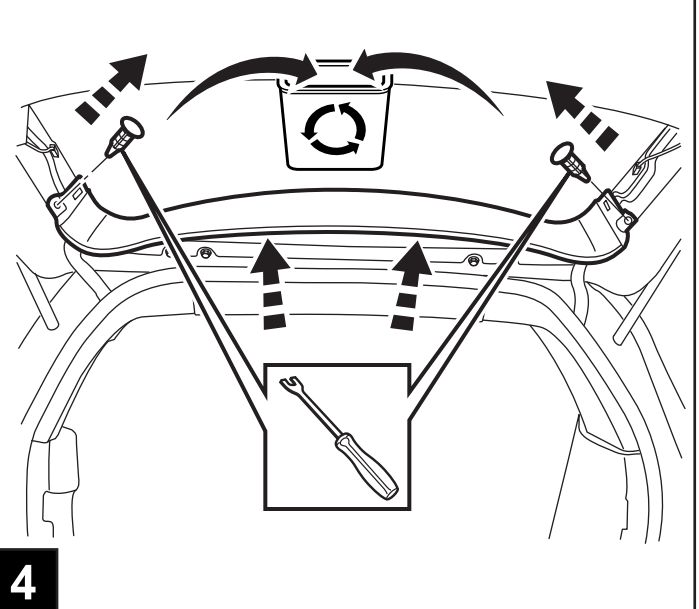
1



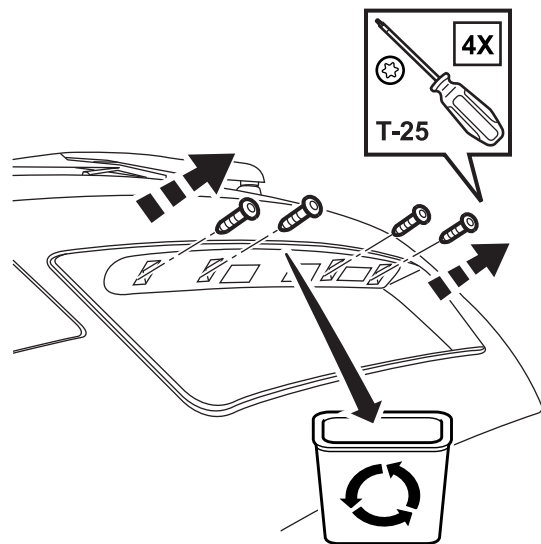
2



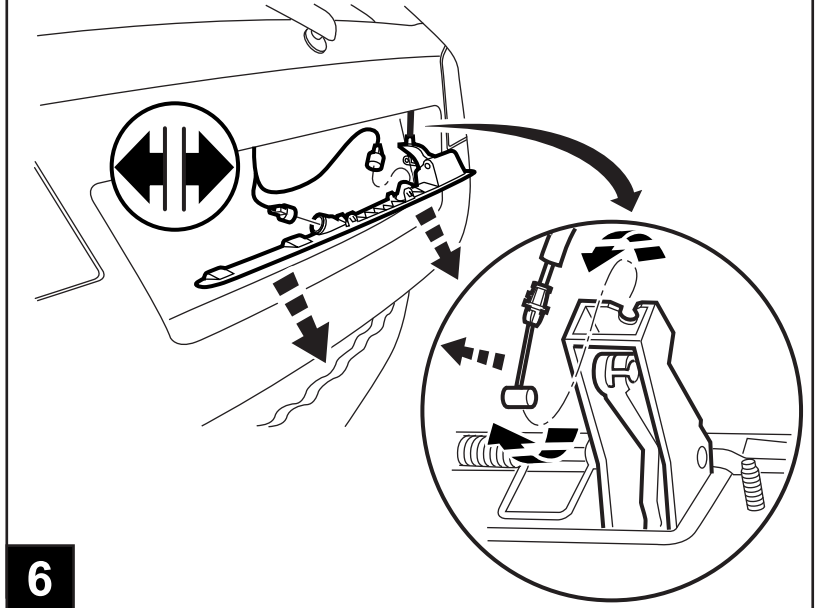
3



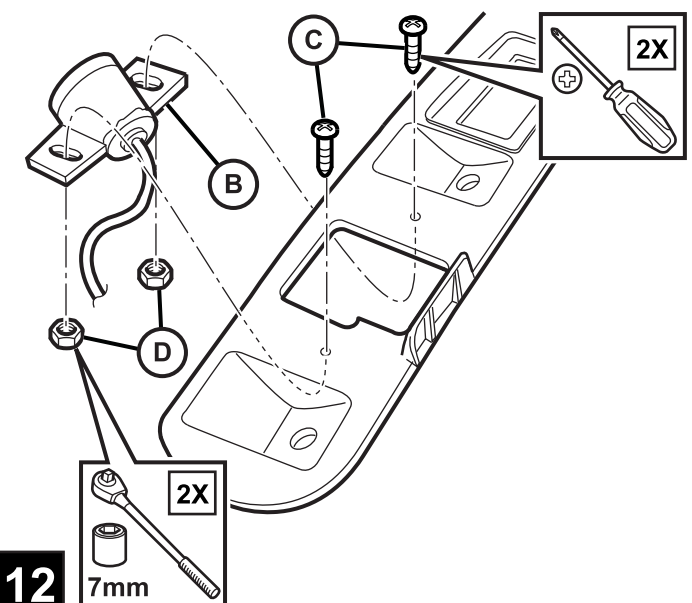
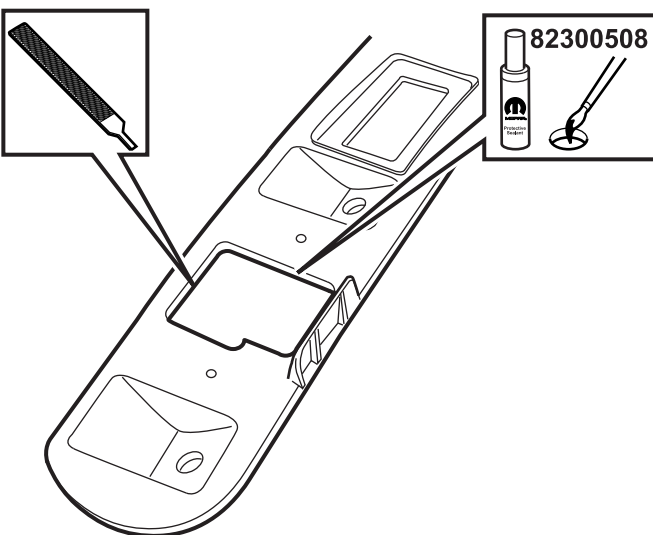
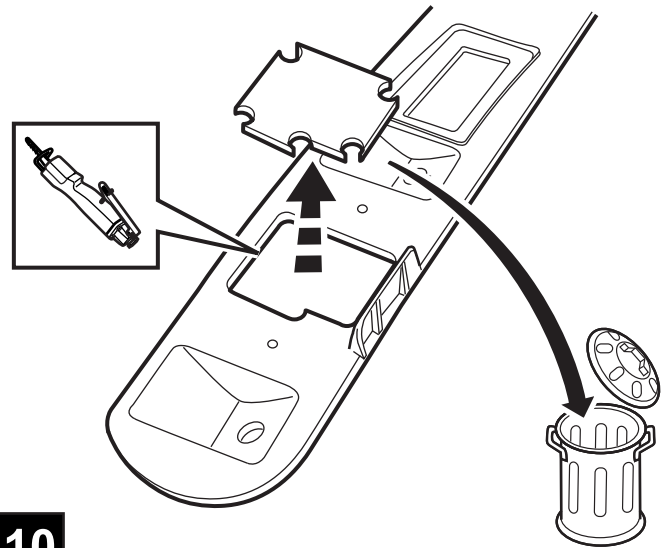
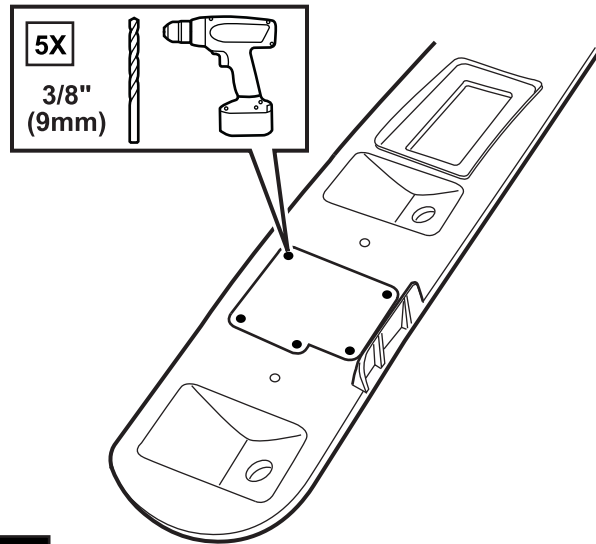
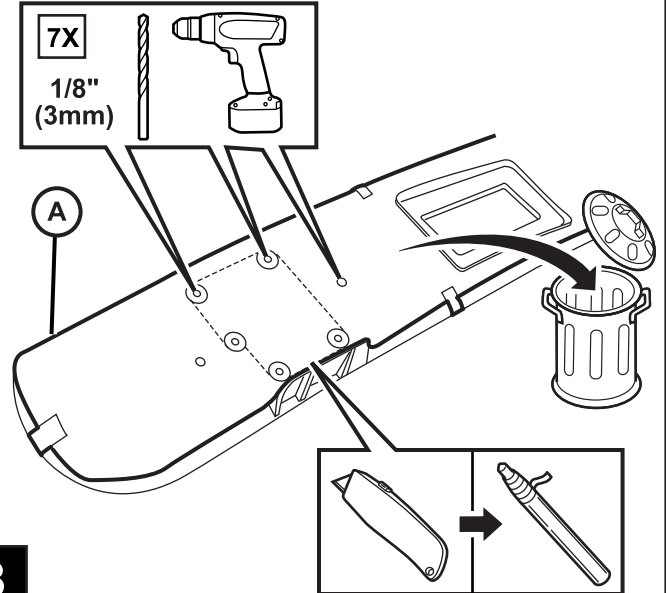
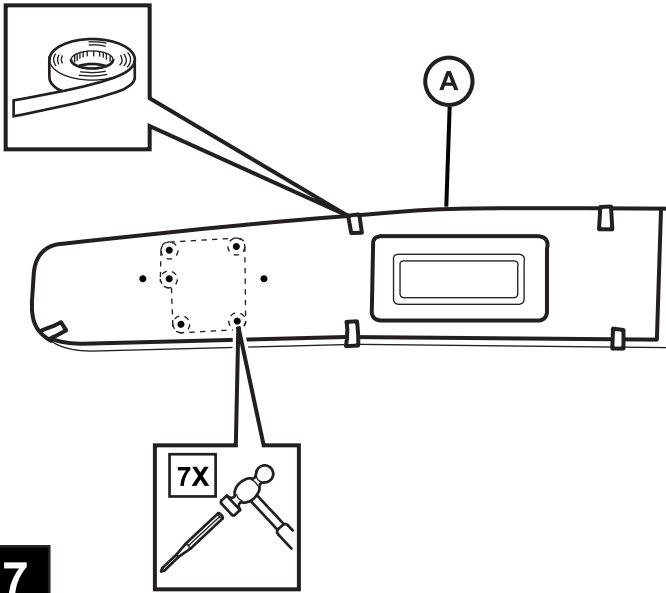
4

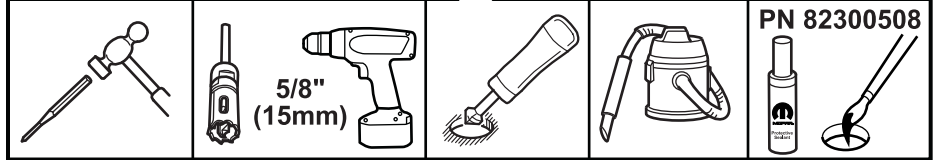
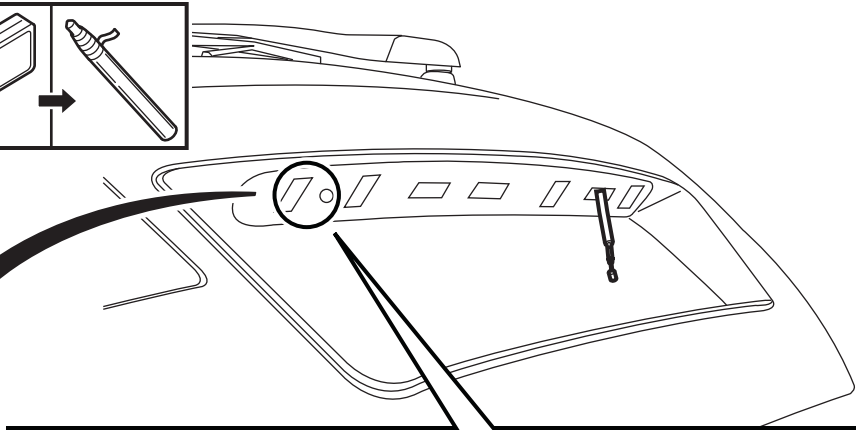
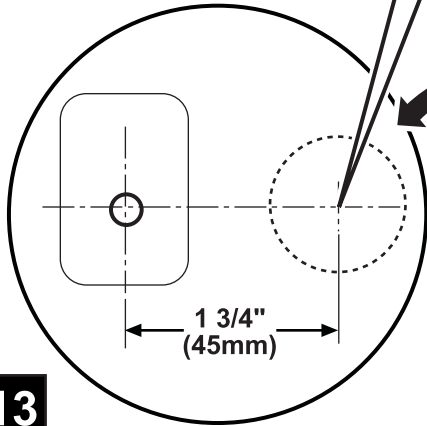
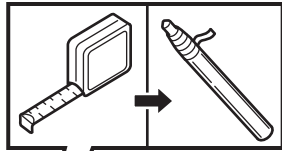
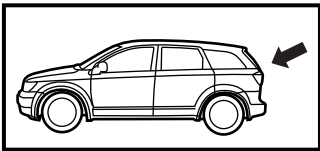


5

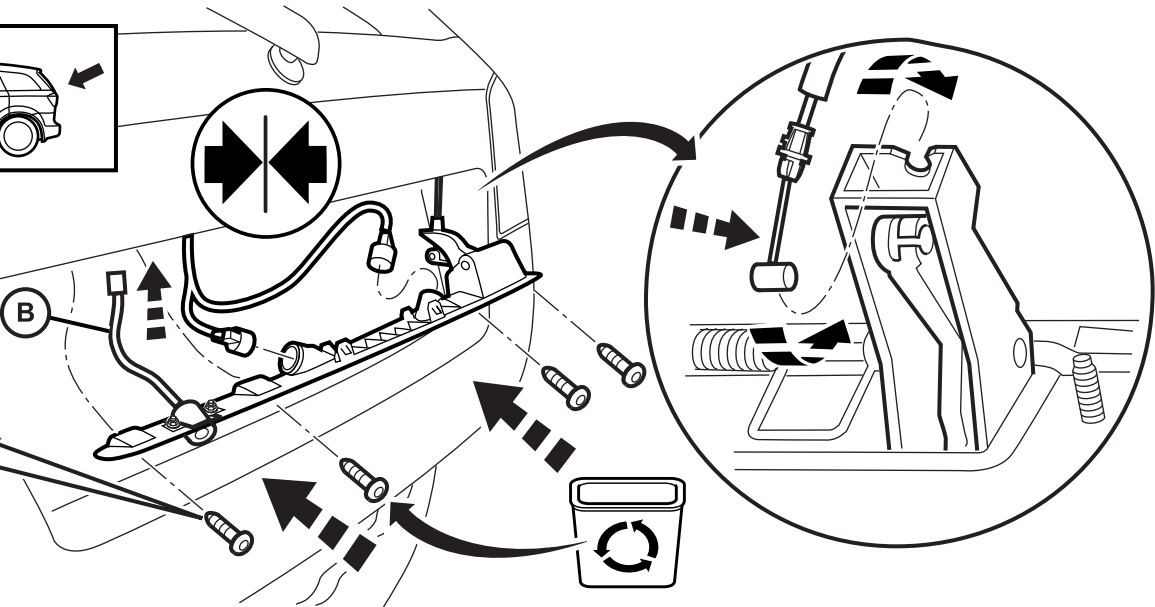
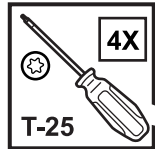
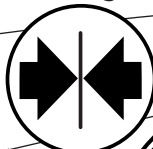
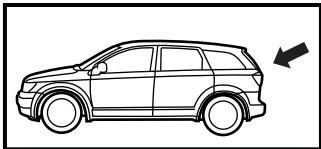


6

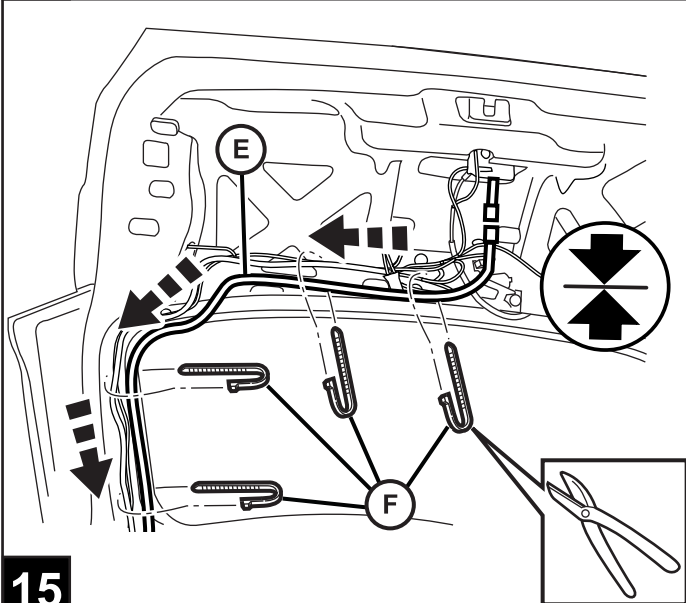




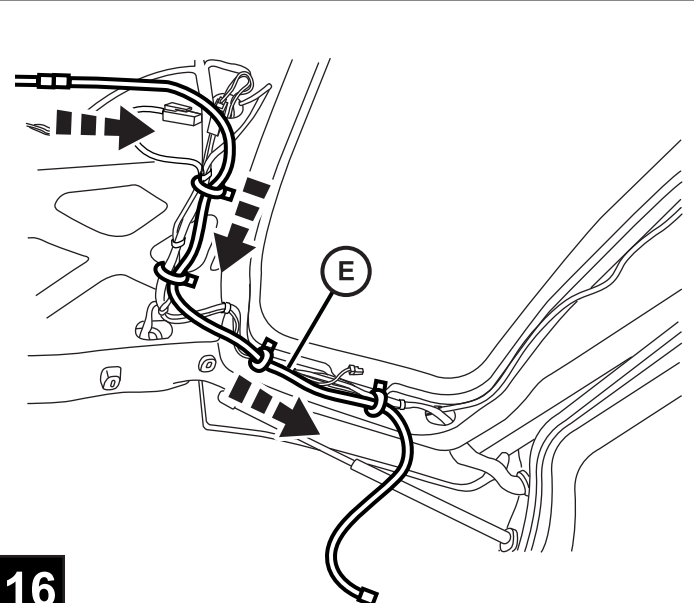
13



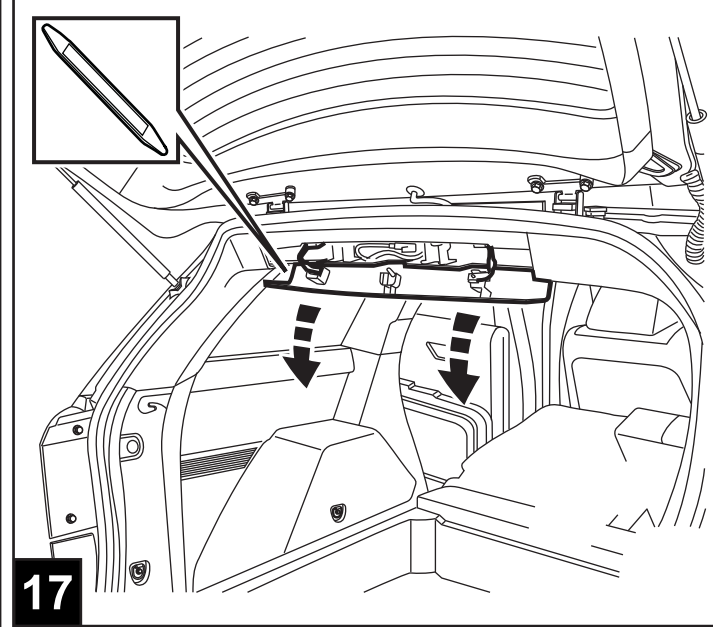
14



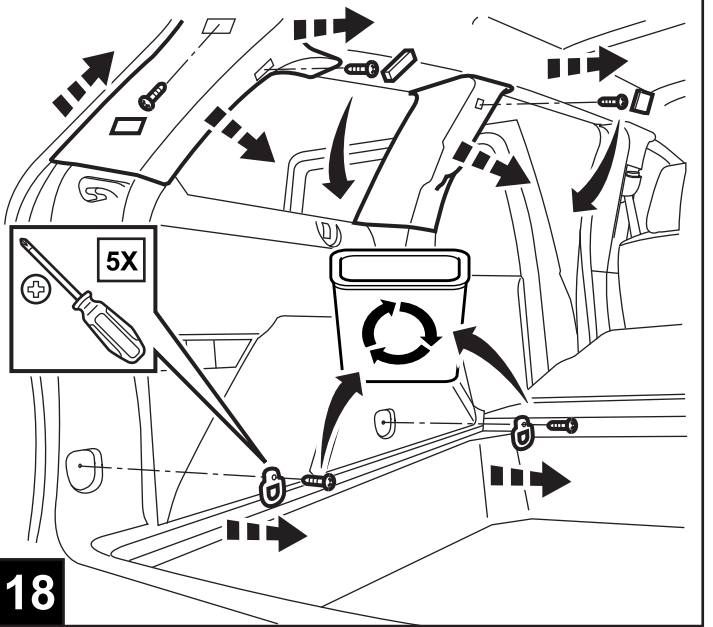
15



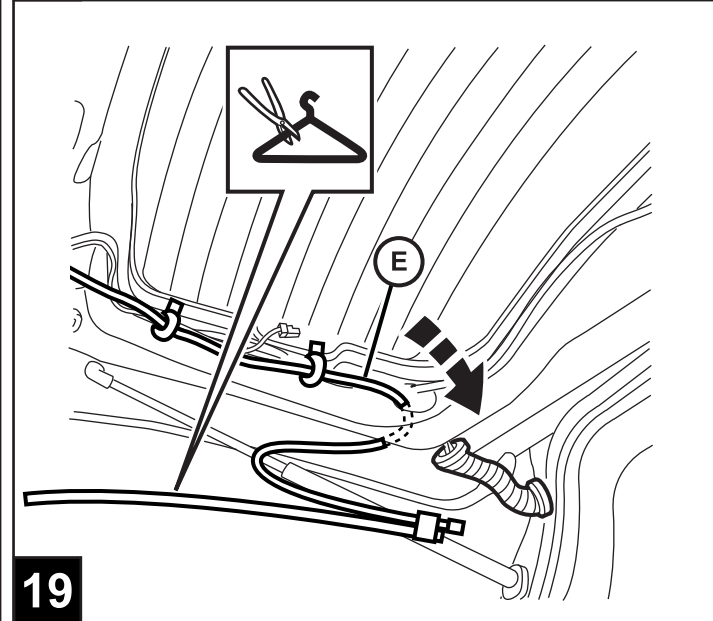
16



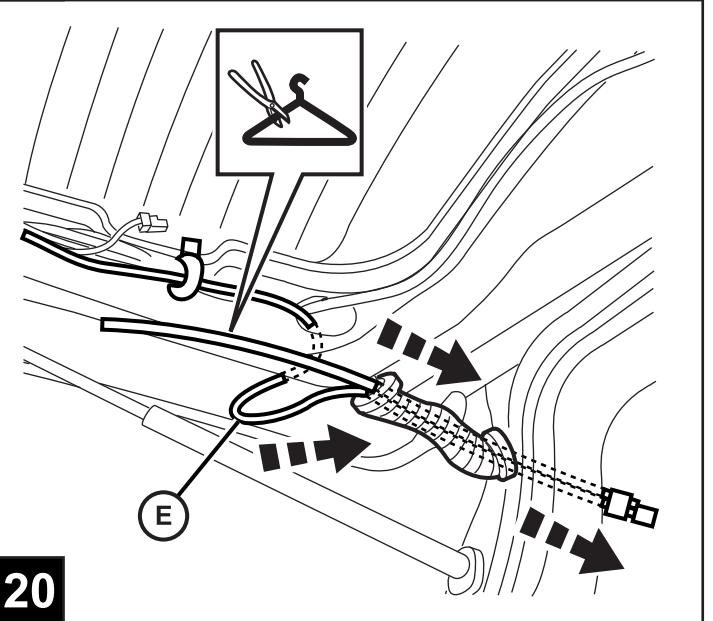
17



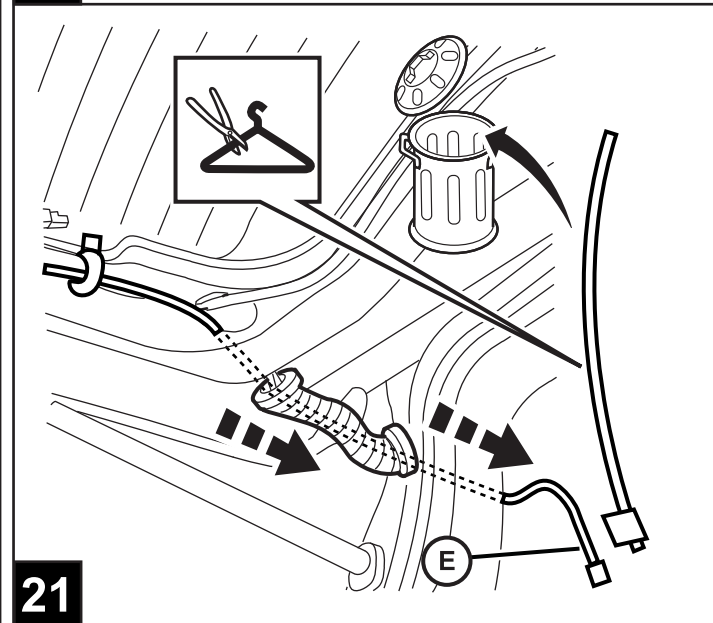
18



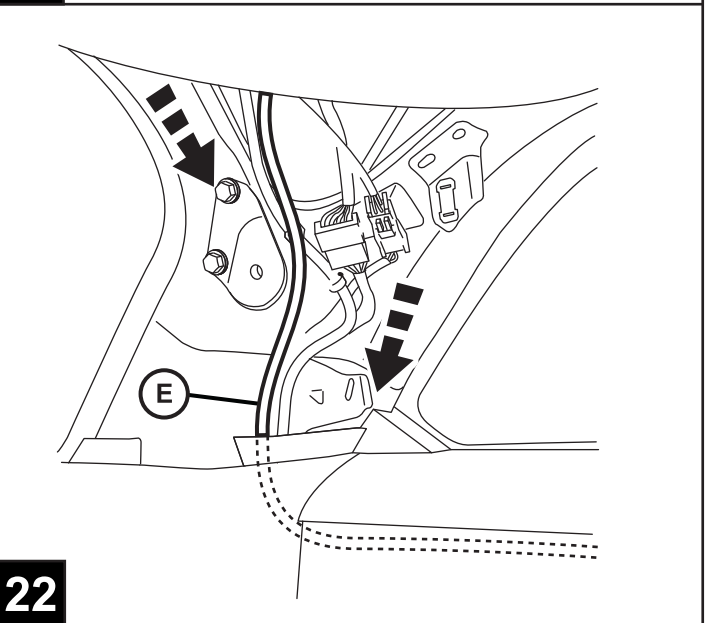
19



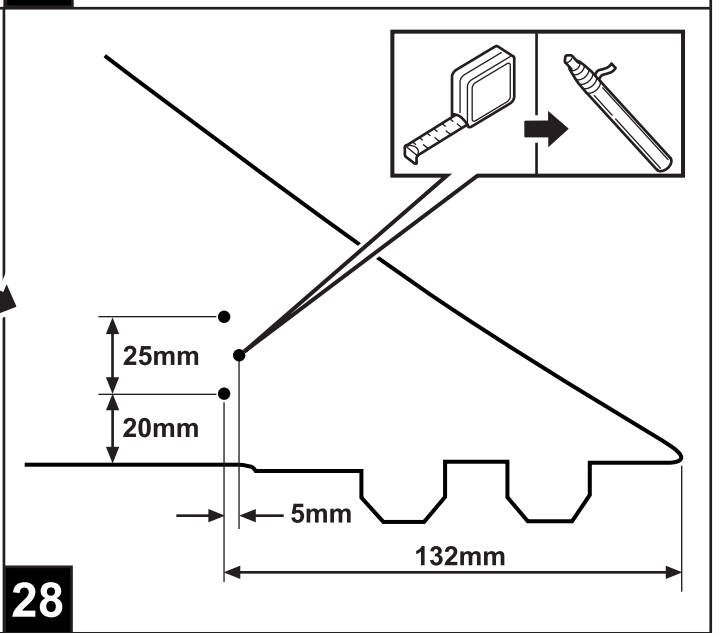
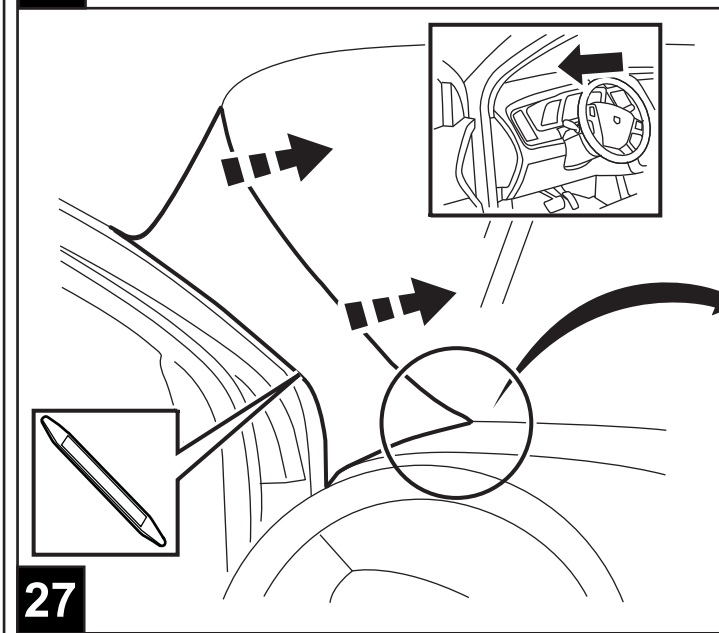
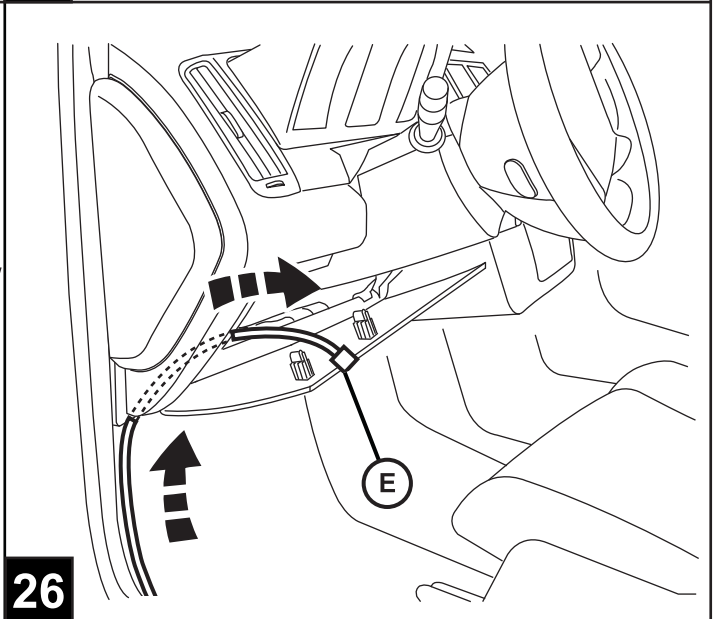
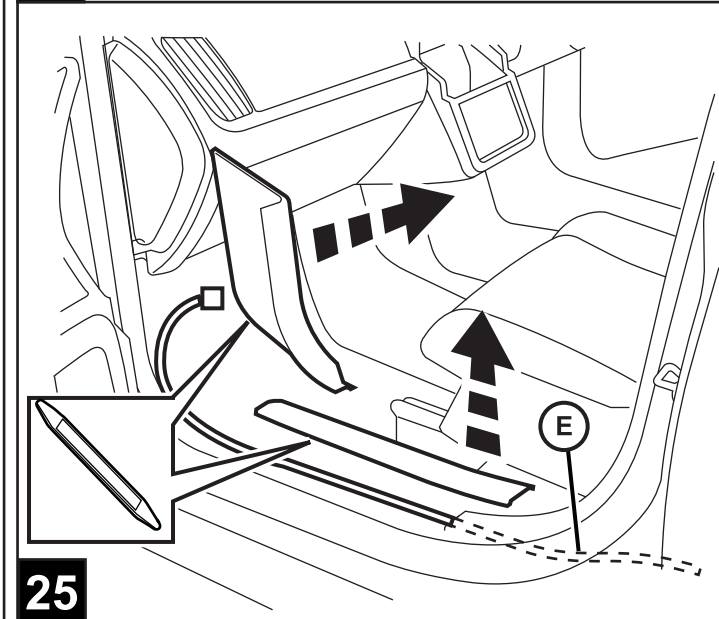
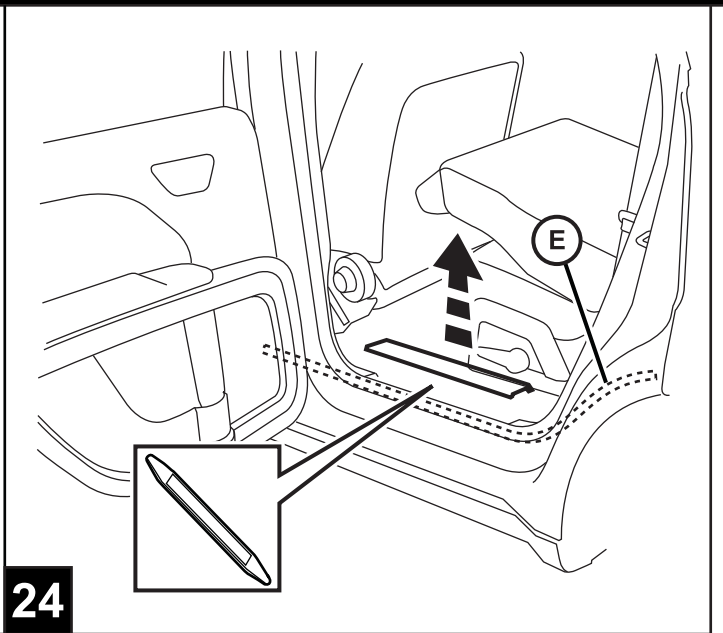
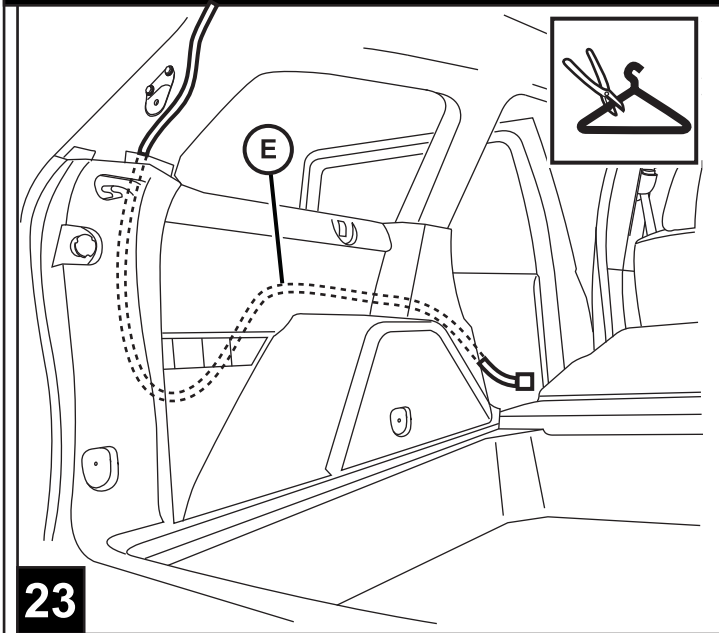
20

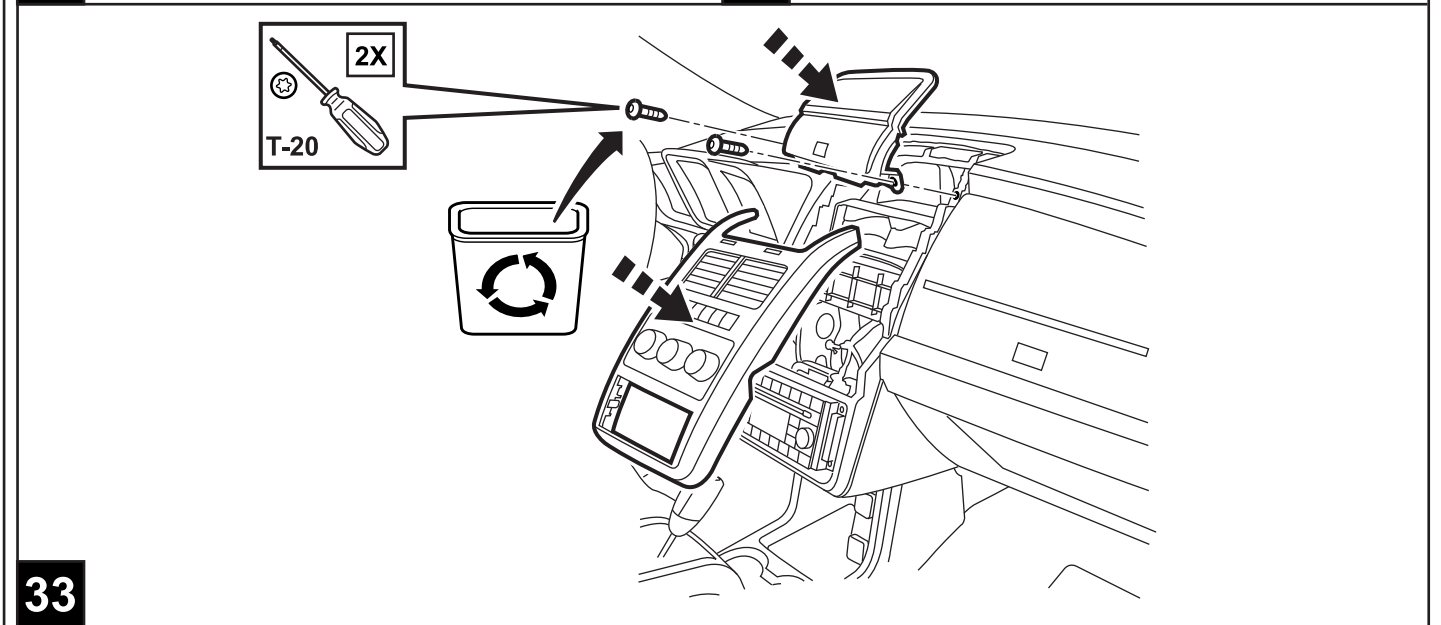
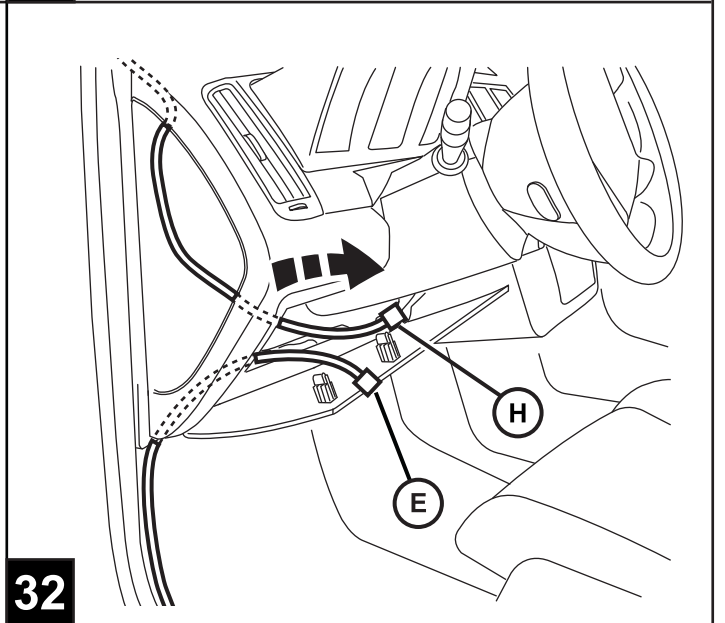
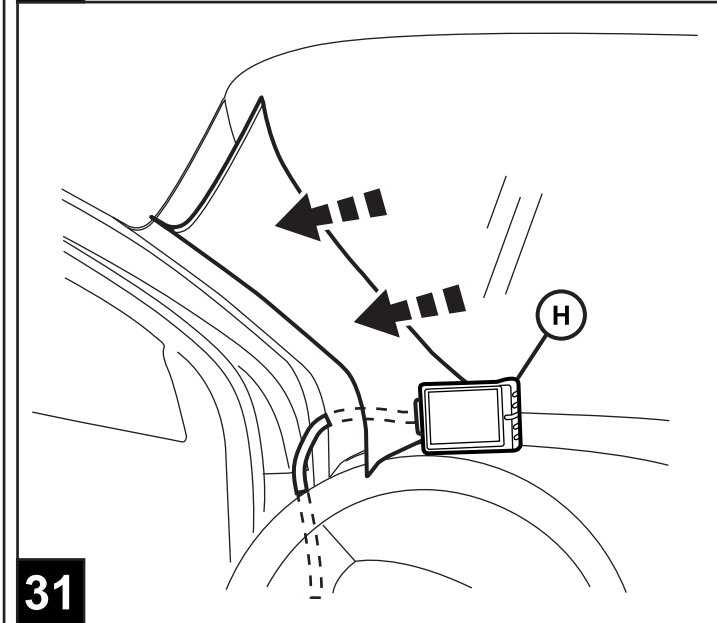
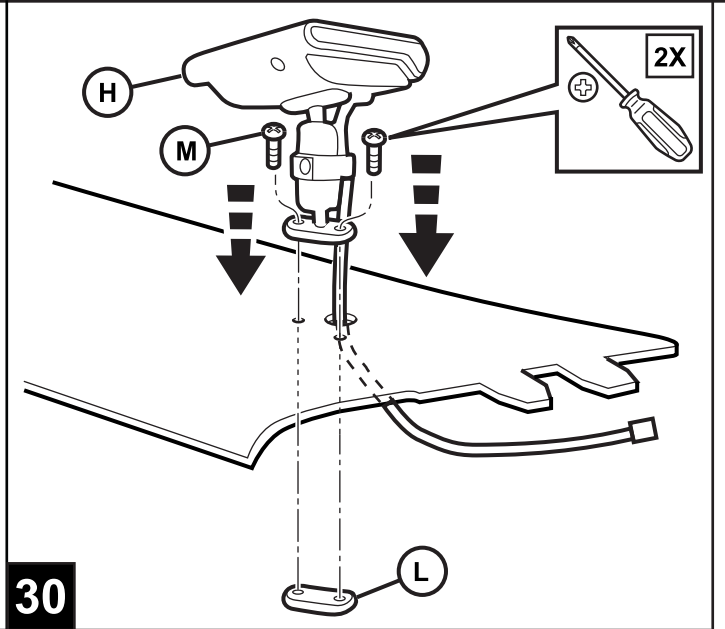
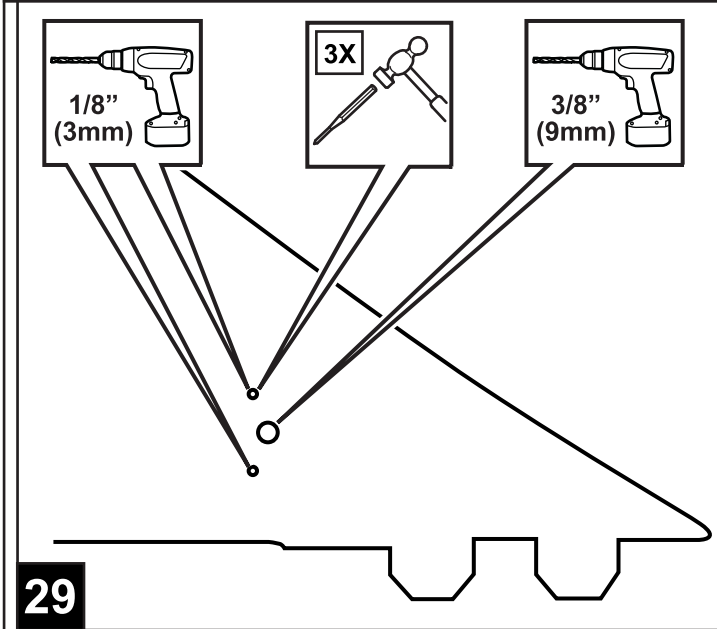


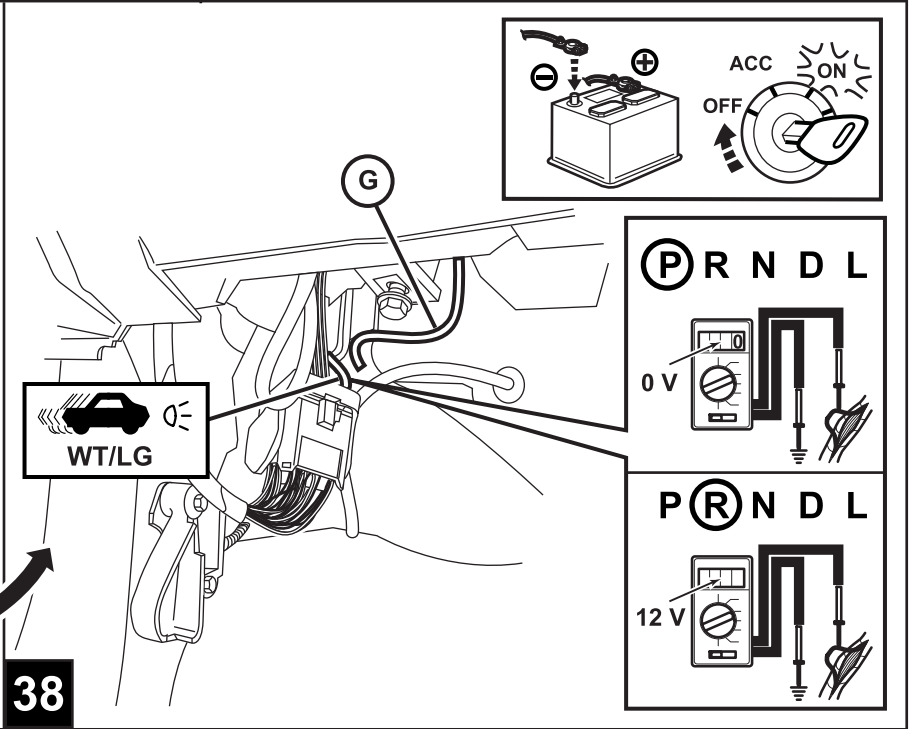
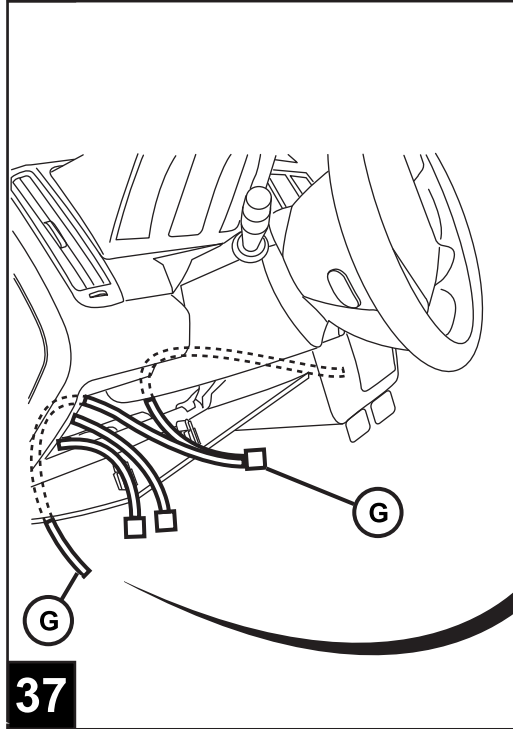
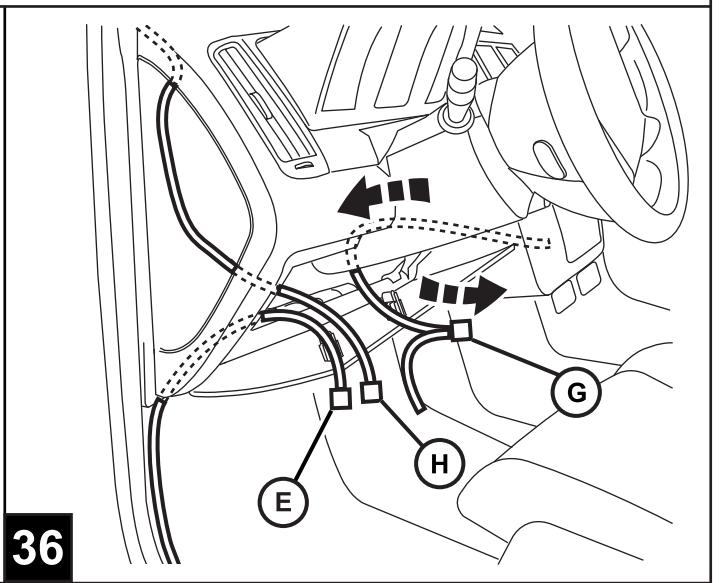
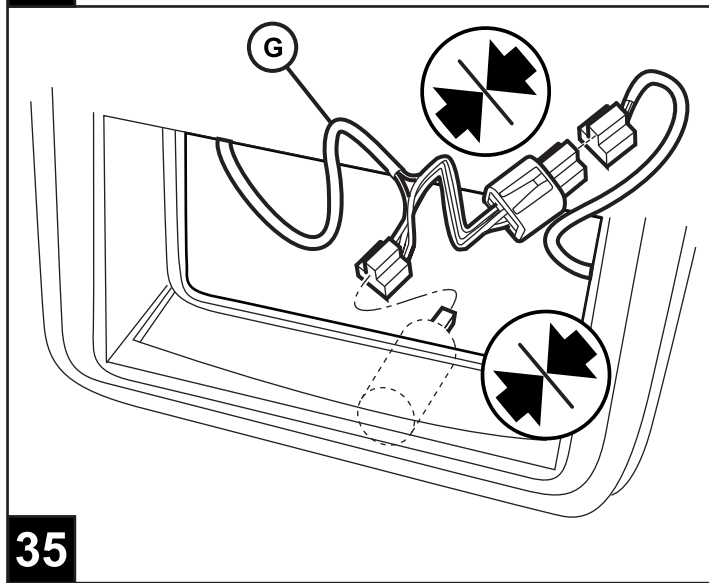
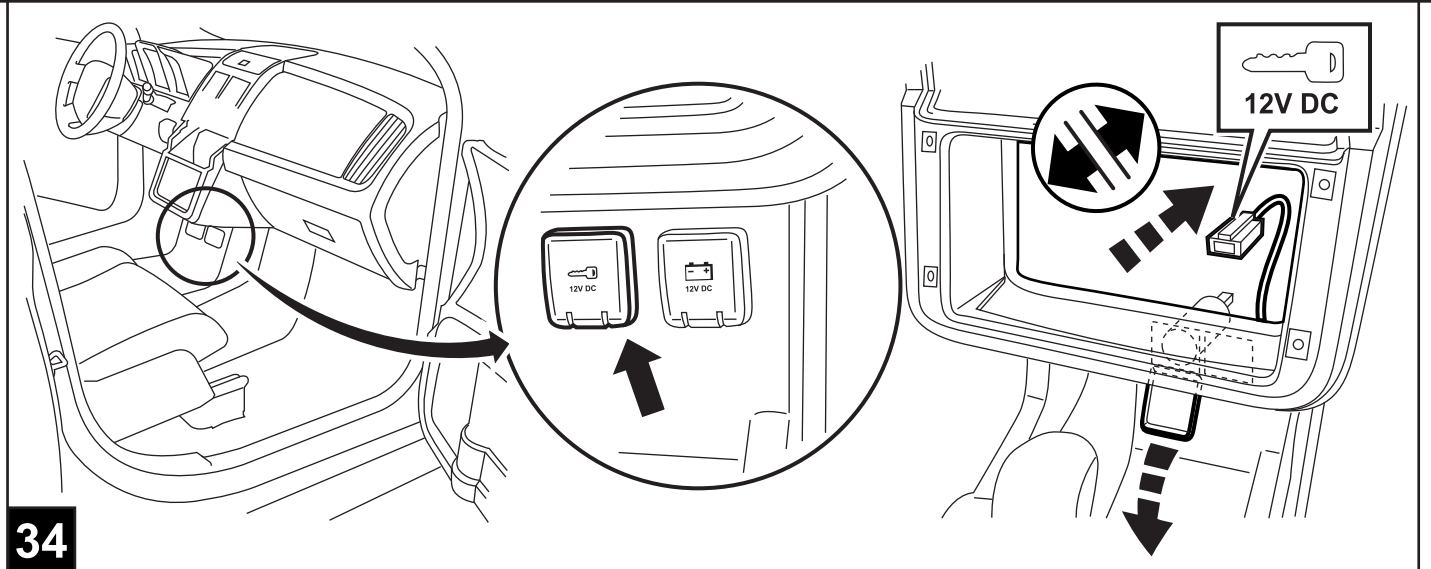
21

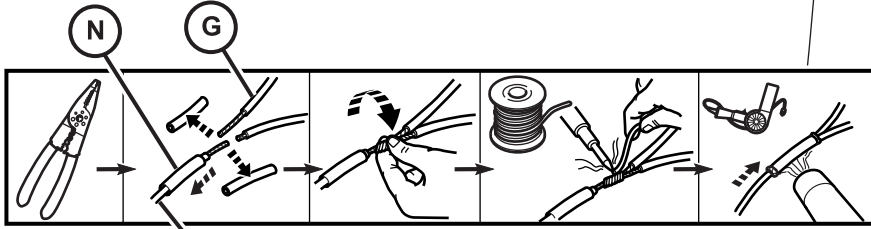
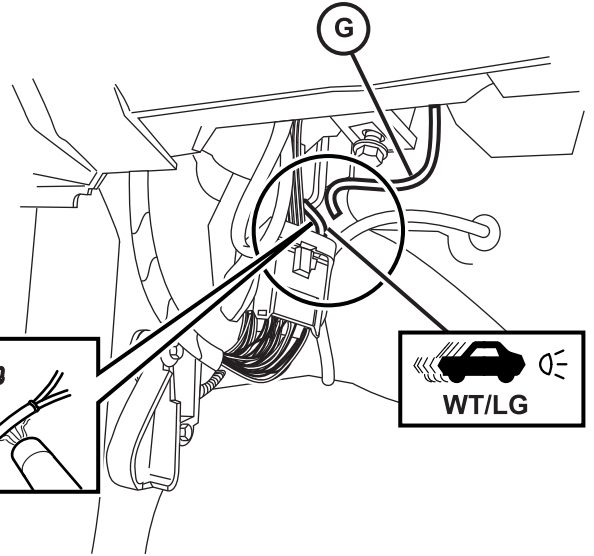
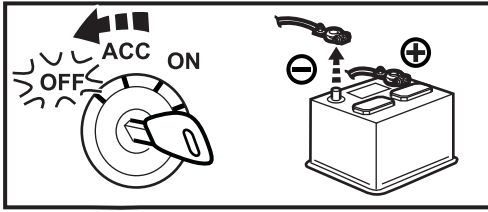


22

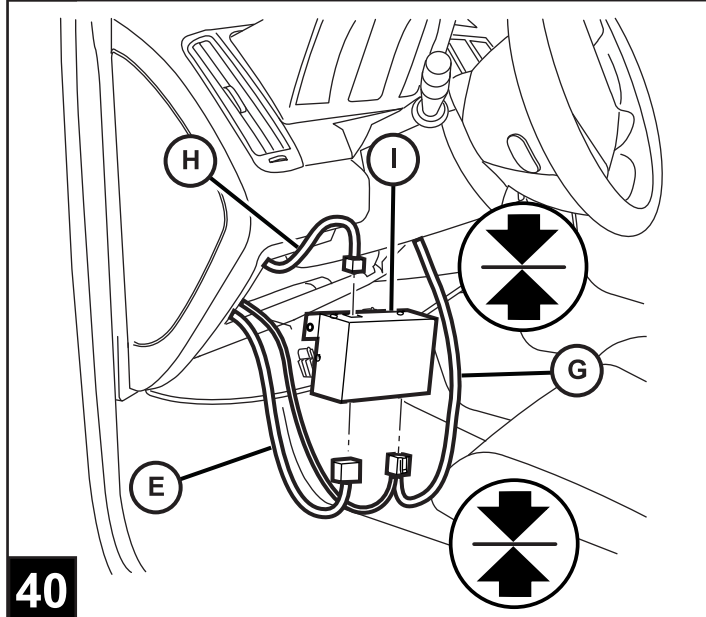




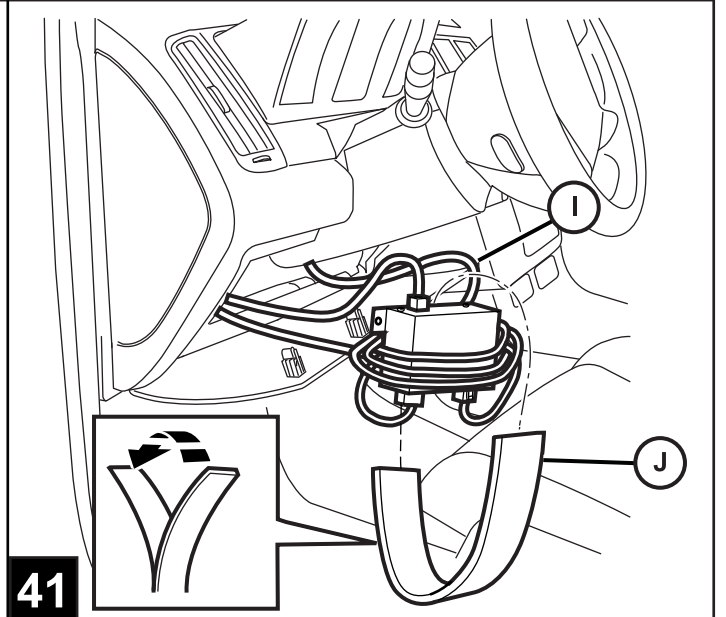




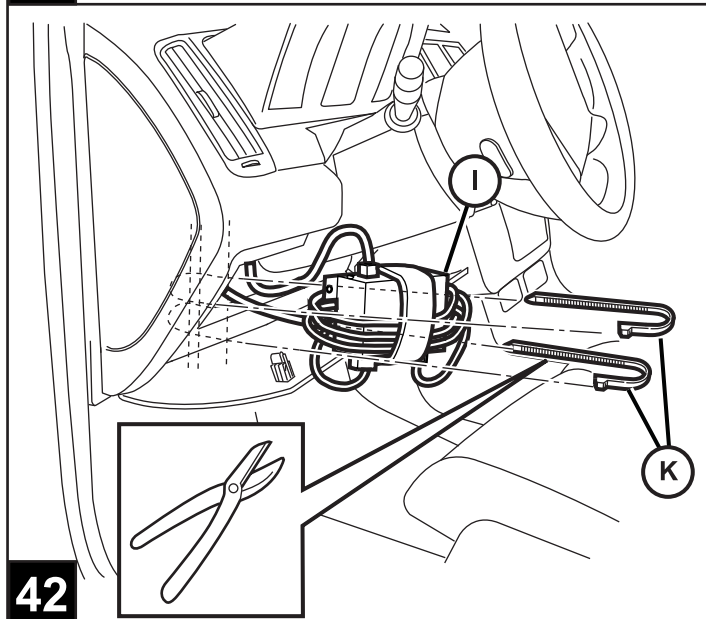
39



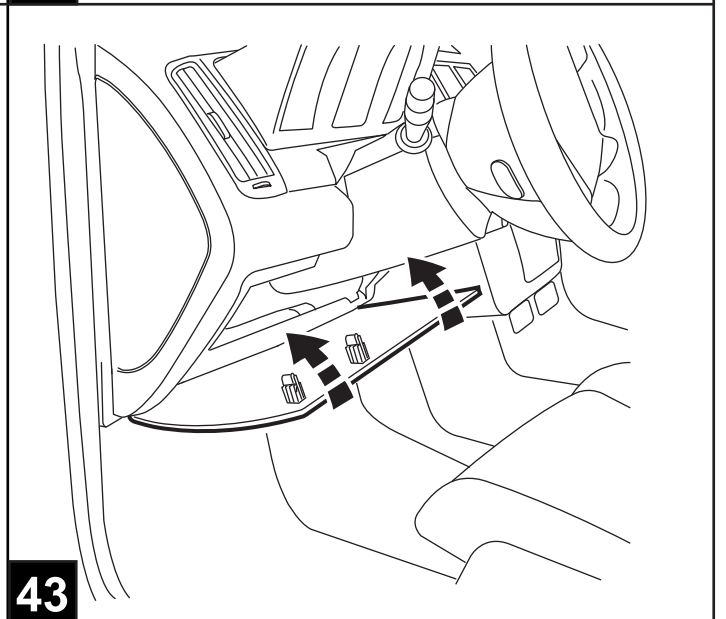
40



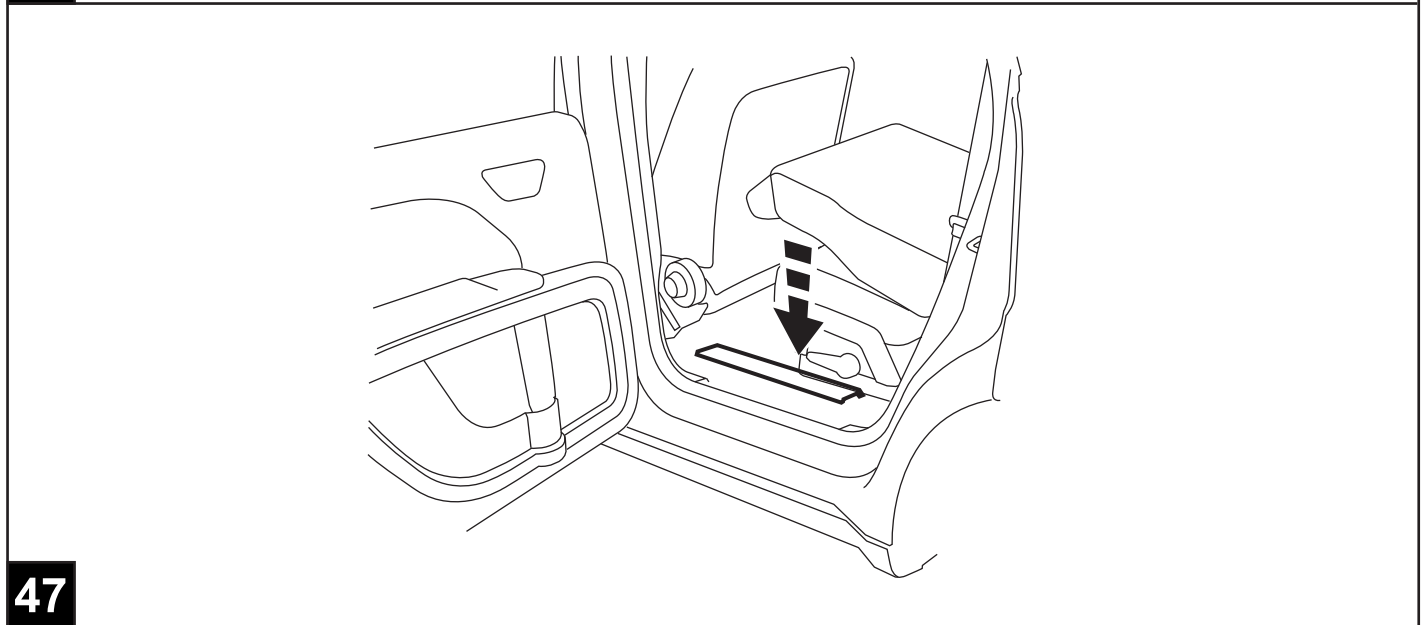
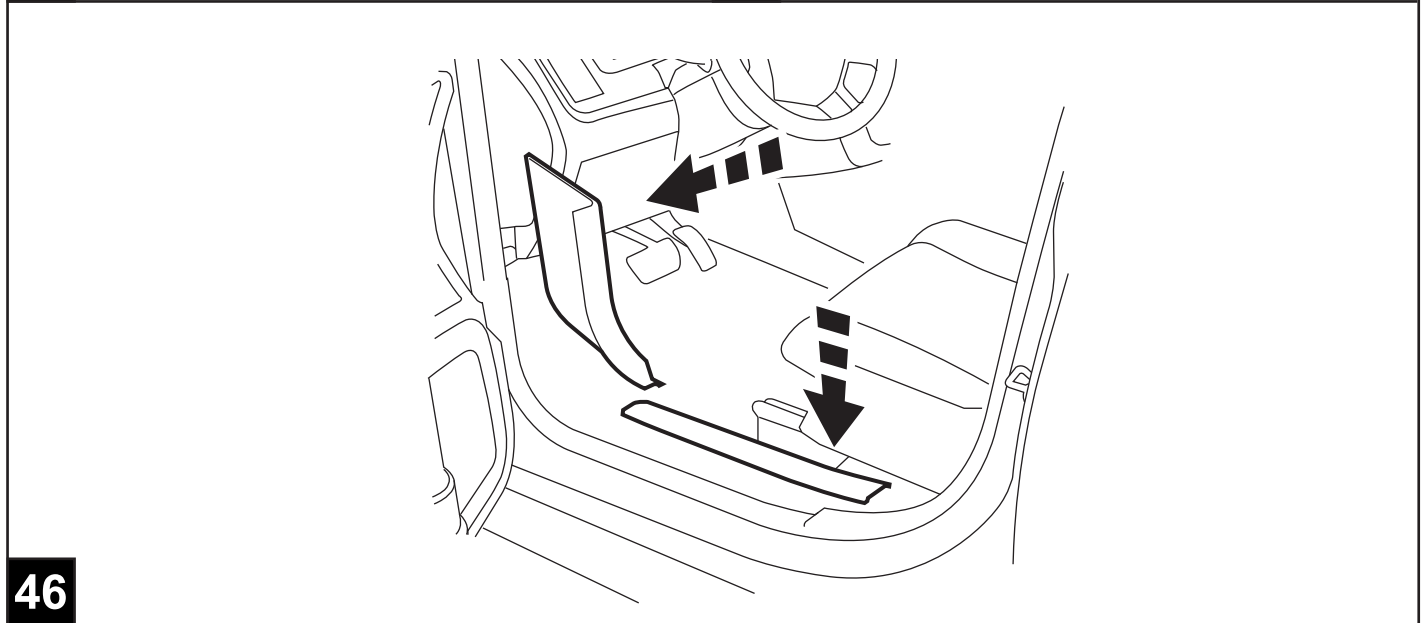
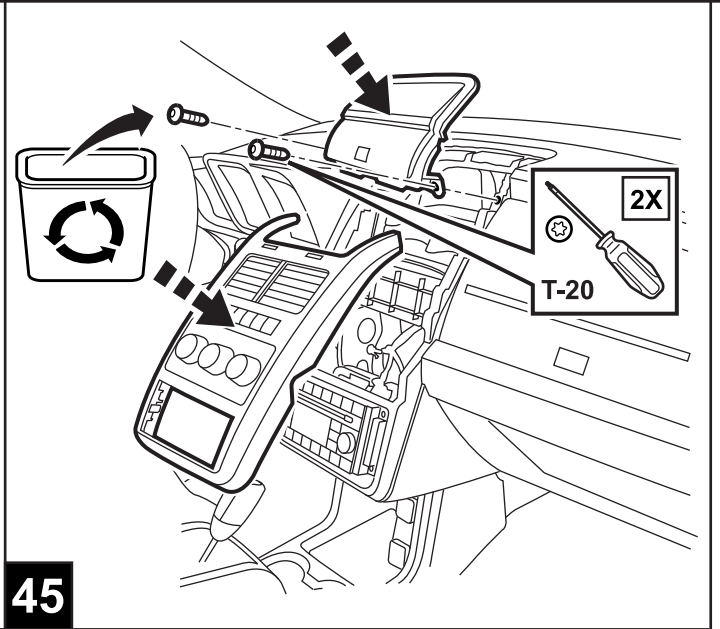
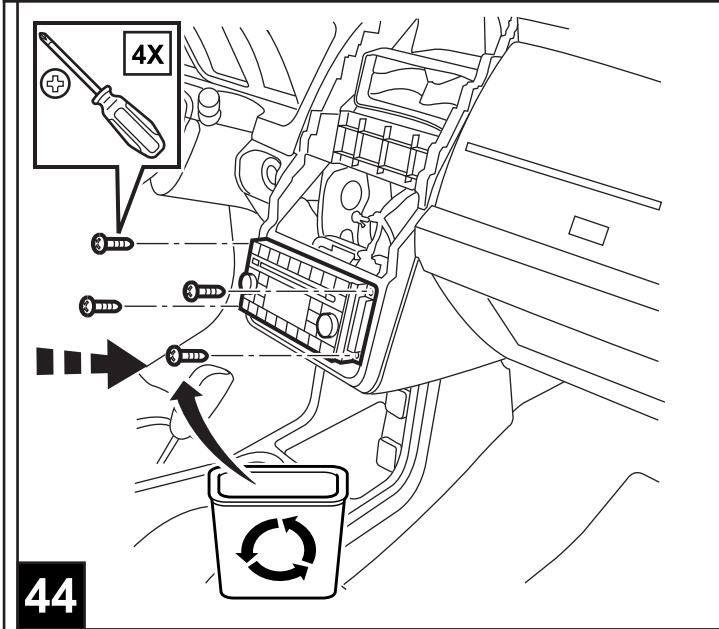
41

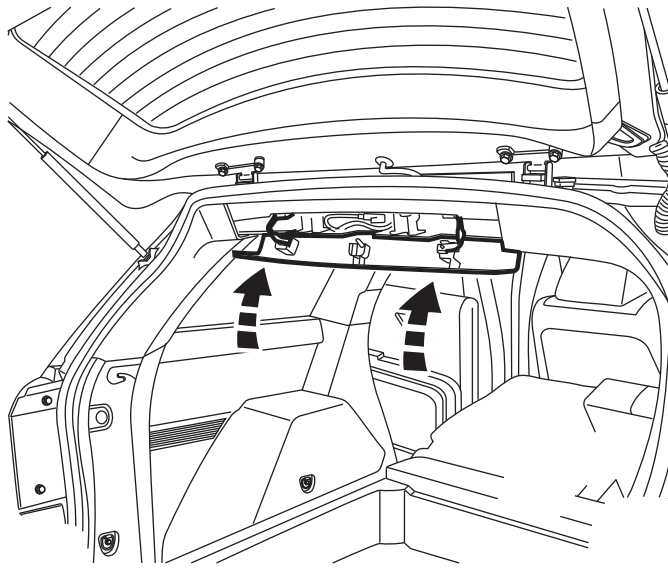


42

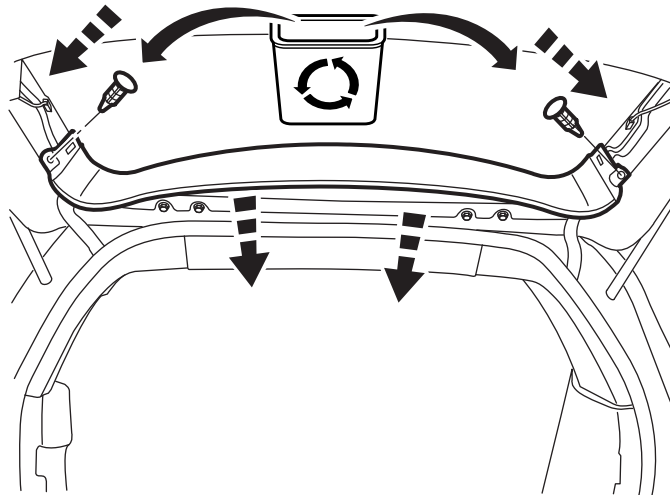


43

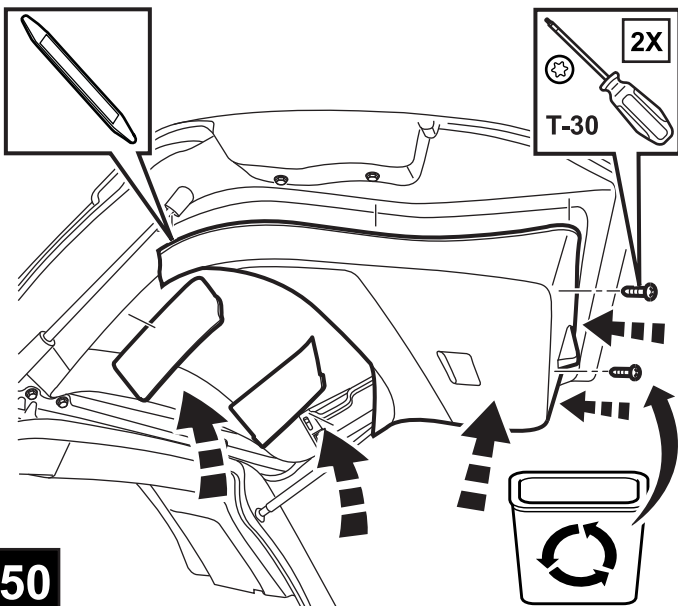




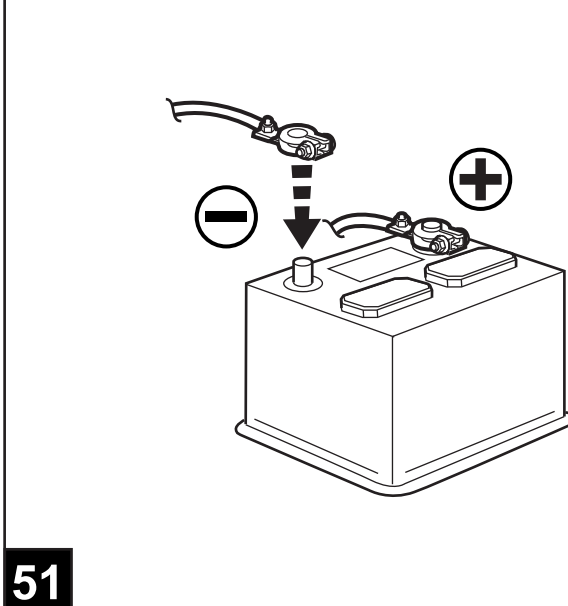
48



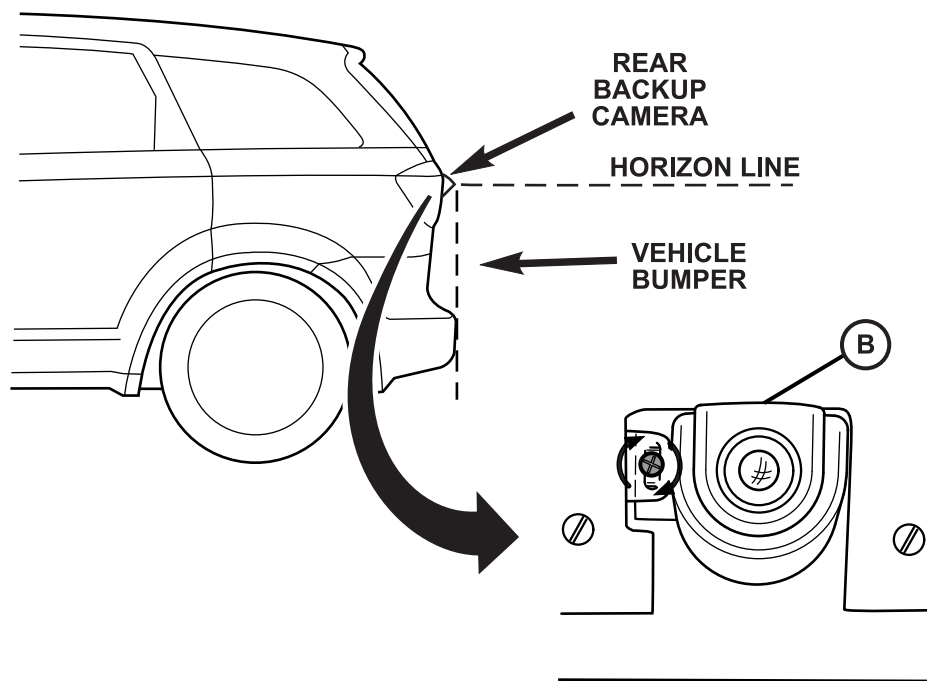
49



50



51



REAR
BACKUP
CAMERA

HORIZON LINE

VEHICLE
BUMPER

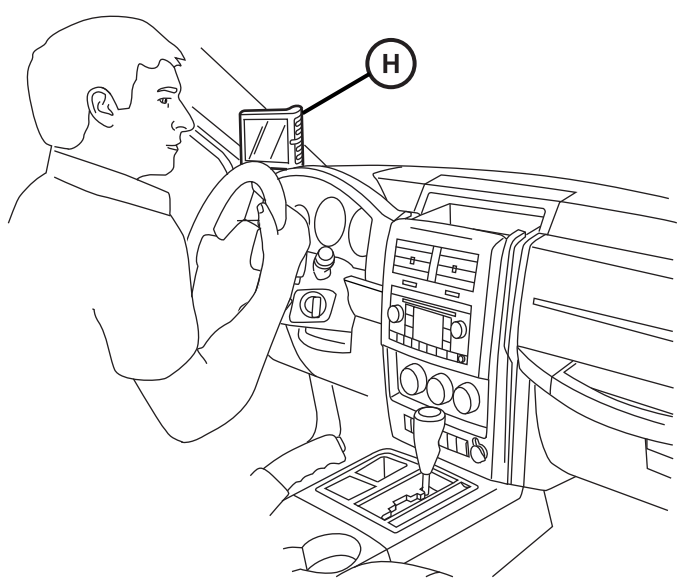
B

CAMERA ADJUSTMENT

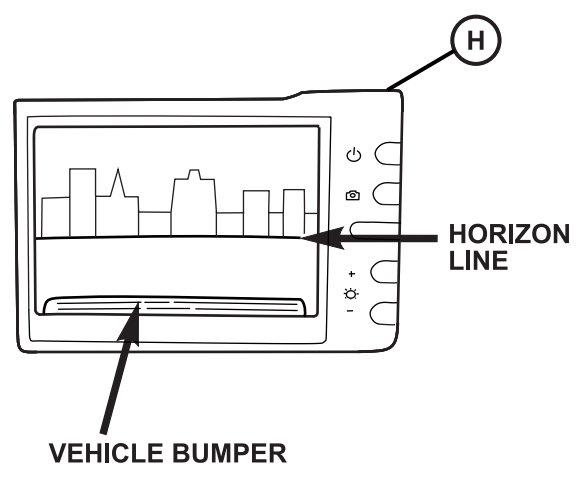
Camera adjustment:

- 1) To adjust camera view angle, locate adjustment screw under the camera on the left side.
- 2) Turn the screw to the right to lower the camera. Turn the screw to the left to raise the camera.
- 3) Check the camera view on the monitor (Item H). The camera angle is set to view the bumper and the horizon.

NOTE:
DUE TO THE WIDE
ANGLE OF THE
CAMERA, OBJECTS
SHOWN ON THE
MONITOR ARE CLOSER
THAN THEY APPEAR.

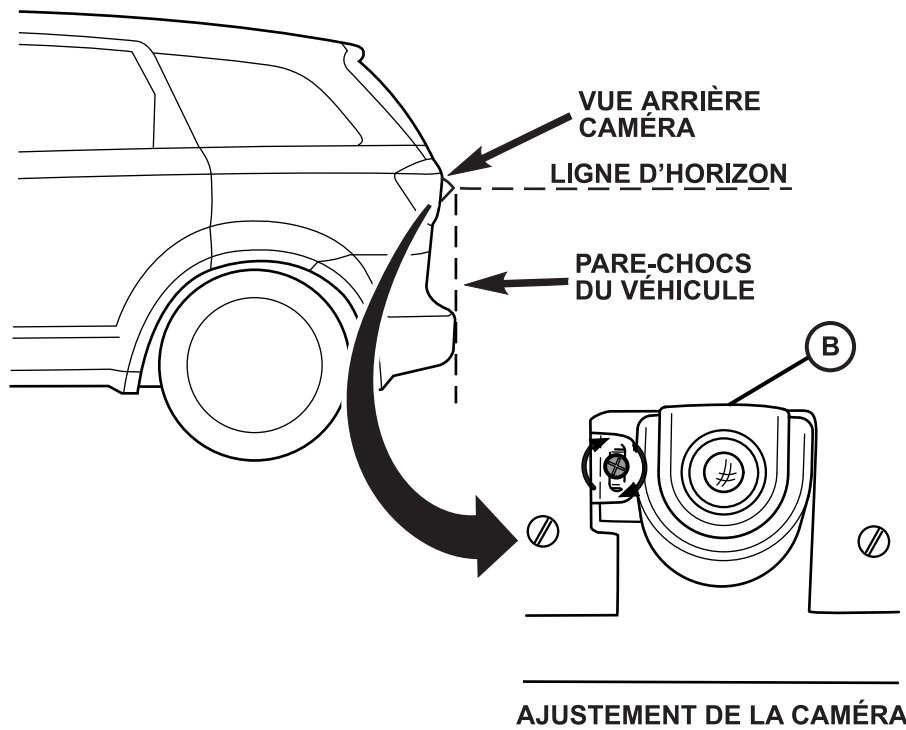


H



HORIZON
LINE

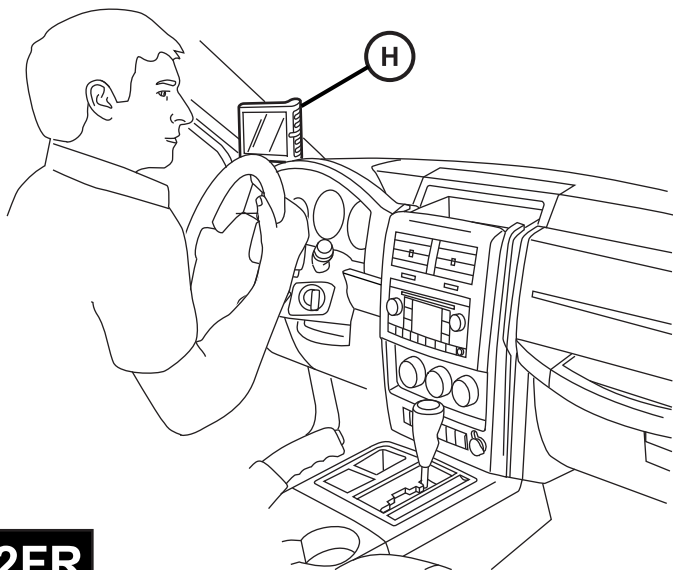
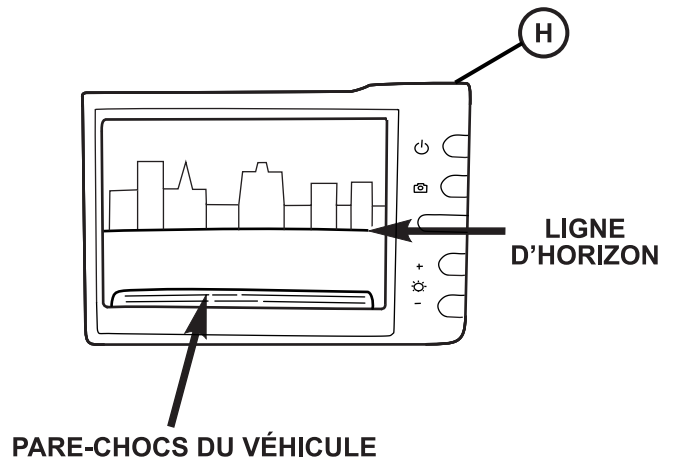
VEHICLE BUMPER

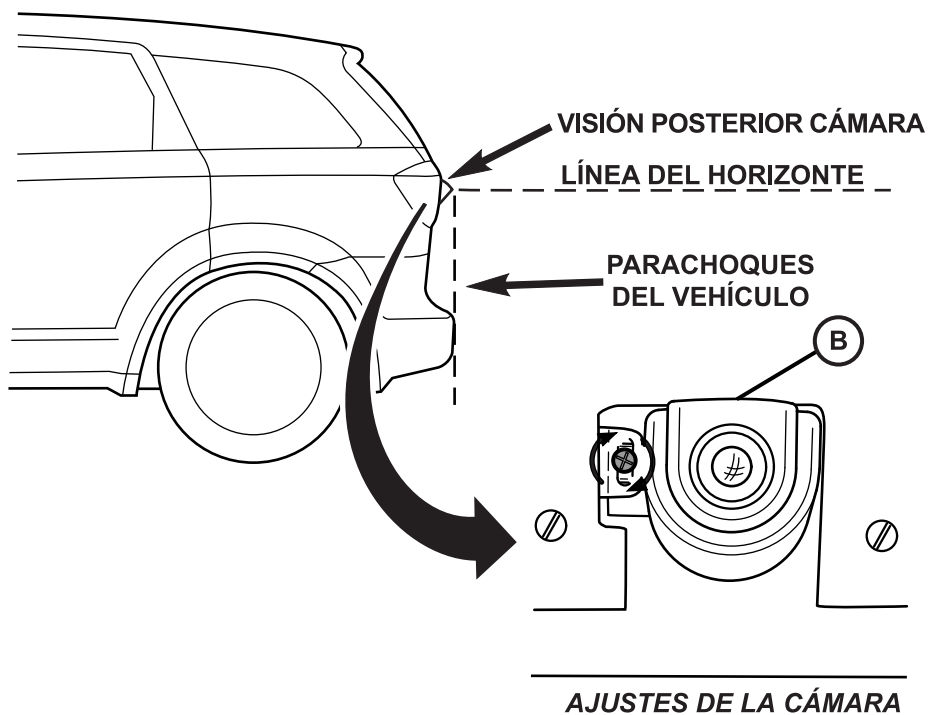


Ajustements de la caméra :

- 1) Pour ajuster l'angle de vision de la caméra, localisez la vis de réglage, à gauche, sous la caméra.
- 2) Tournez la vis vers la droite pour abaisser la caméra. Tournez la vis vers la gauche pour relever la caméra.
- 3) Vérifiez la vue de la caméra sur le moniteur (article H). L'angle de la caméra est réglé pour voir le pare-chocs et l'horizon.

NOTE :
EN RAISON DE L'ANGLE LARGE DE LA CAMÉRA, LES OBJETS AFFICHÉS SUR LE MONITEUR SONT PLUS PROCHES QUE CE QU'IL PARAÎT.

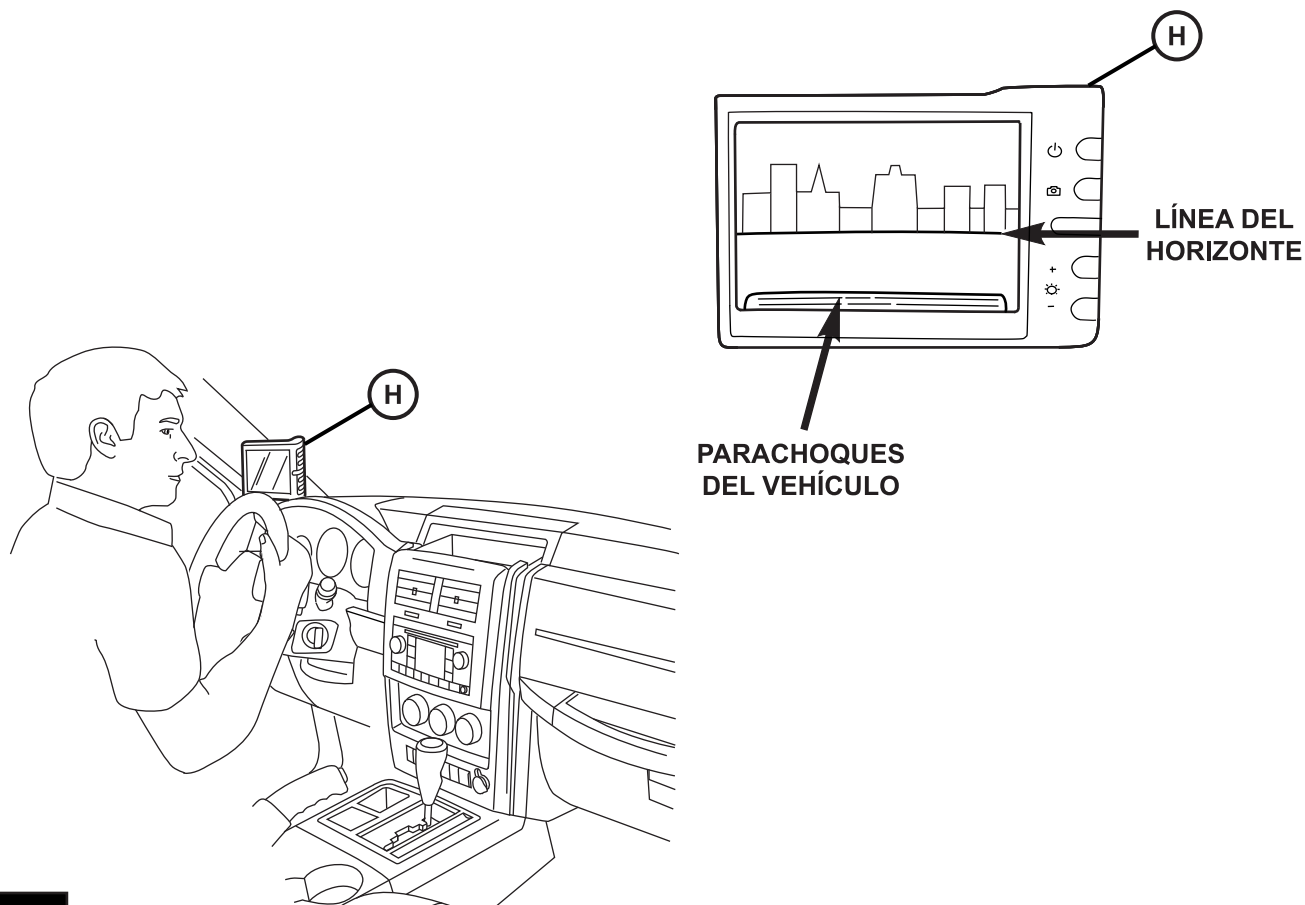




Ajustes de la cámara:

- 1) Para ajustar el ángulo de visión de la cámara, localice el tornillo ajustador situado abajo, al lado izquierdo de la cámara.
- 2) Gire el tornillo a la derecha para bajar el ángulo de la cámara. Gírelo a la izquierda para elevar el ángulo de la cámara.
- 3) Revise en el monitor (elemento H) la visión de la cámara. El ángulo de la cámara se ajusta para visualizar el parachoques y la línea del horizonte.

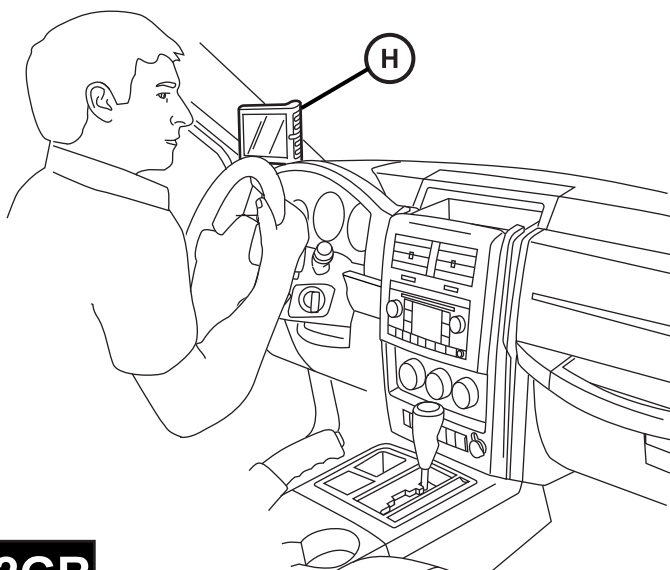
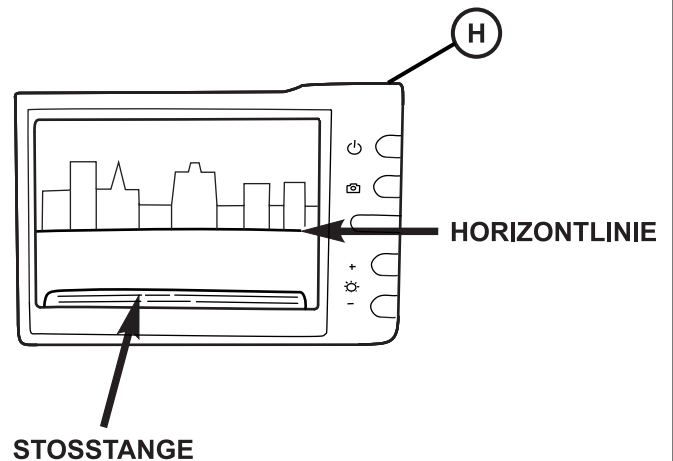
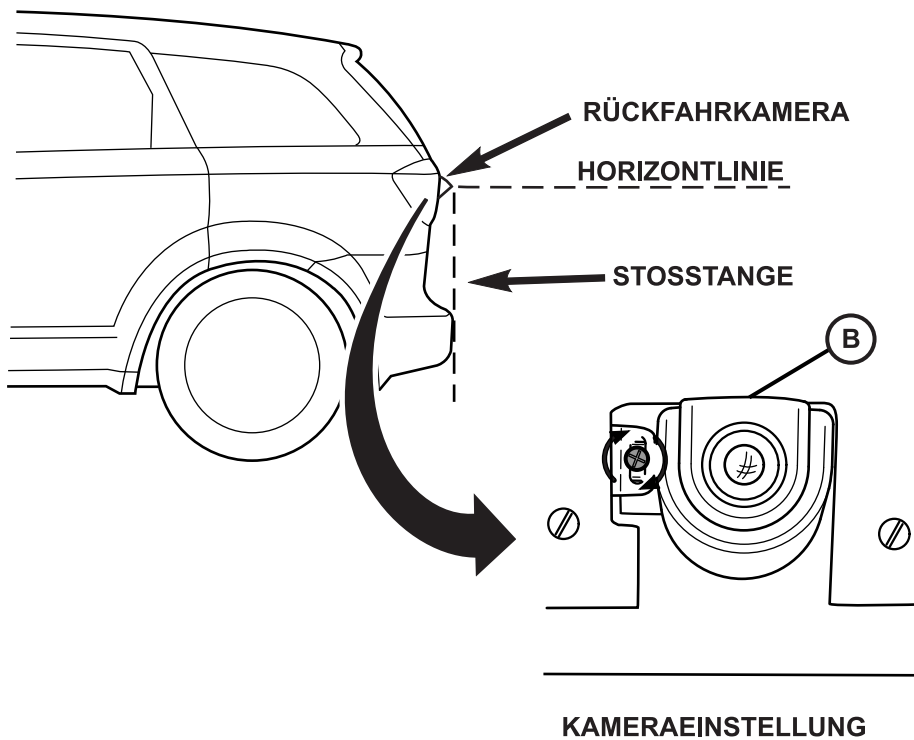
NOTA:
DEBIDO A LA AMPLITUD DEL ÁNGULO DE LA CÁMARA, LOS OBJETOS QUE APARECEN EN EL MONITOR PUEDEN PARECER MÁS CERCANOS DE LO QUE EN REALIDAD ESTÁN.



Kameraeinstellung:

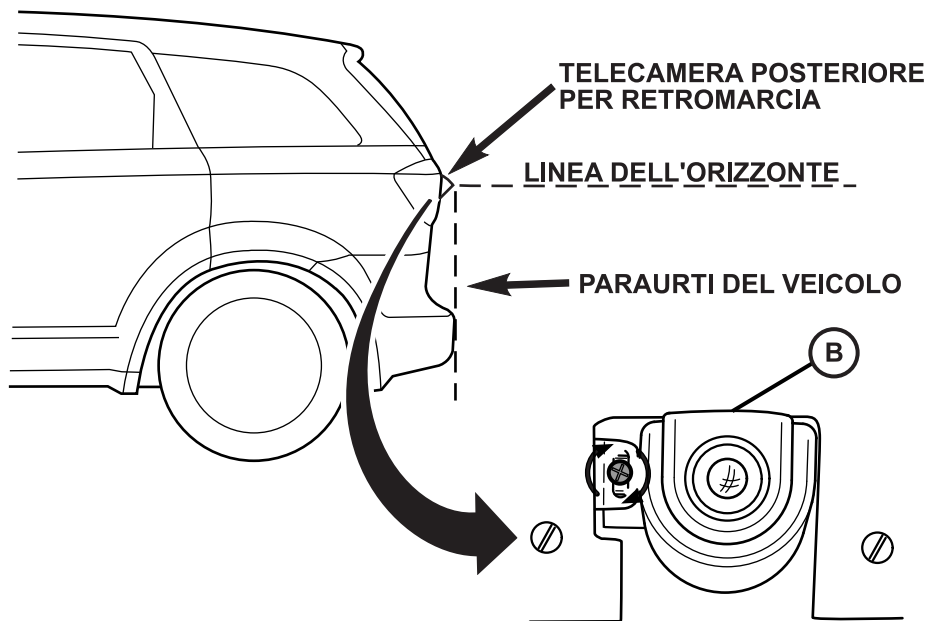
- 1) Um den Sichtwinkel der Kamera einzustellen verwenden Sie die Stellschraube links unter der Kamera.
- 2) drehen Sie die Schraube nach rechts, um die Kamera zu senken. Drehen Sie die Schraube nach links, um die Kamera zu höher zu stellen.
- 3) Überprüfen Sie das Bild auf dem Bildschirm (Einheit H). Der Kamerawinkel ist so eingestellt, dass die Stosstange und der Horizont sichtbar sind.

ACHTUNG:
AUGRUND DES WEITWINKELS DER KAMERA SIND OBJEKTE IN WIRKLICHKEIT NÄHER ALS SIE AUF DEM BILDSCHIRM ERSCHEINEN.



52GR

Regolazione della telecamera:



- 1) Per regolare l'angolo visivo della telecamera, localizzare la vite di regolazione sotto il dispositivo sul lato sinistro.
- 2) Ruotare la vite verso destra per abbassare la telecamera: Ruotare la vite a sinistra per alzare la telecamera.
- 3) Controllare la visuale della telecamera sul monitor (articolo H). L'angolo visivo della telecamera è impostato in modo da visualizzare il paraurti e l'orizzonte.

REGOLAZIONE DELLA TELECAMERA:

NOTA:
A CAUSA DELL'OBIETTIVO GRANDANGOLARE DELLA TELECAMERA, GLI OGGETTI VISUALIZZATI SUL MONITOR SONO PIÙ VICINI DI QUANTO SEMBRI.

