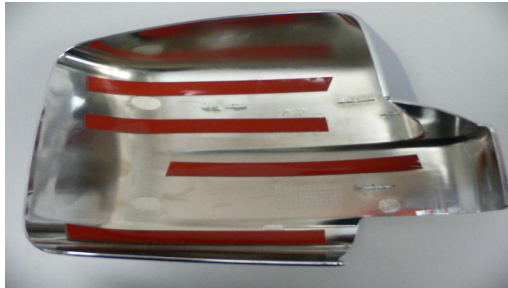




LIBERTY / NITRO MIRROR COVER



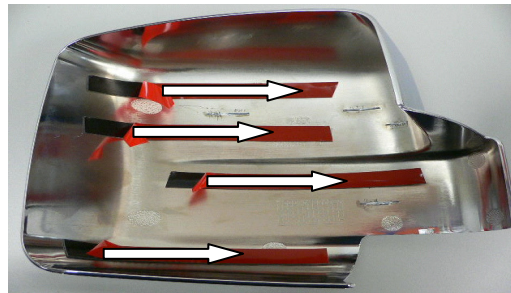
A



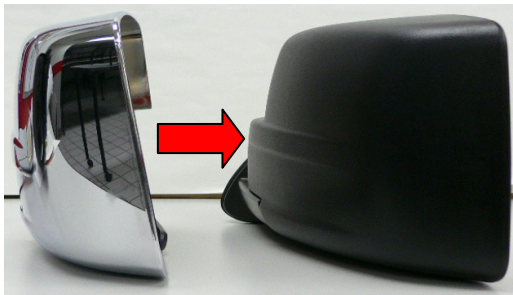
B



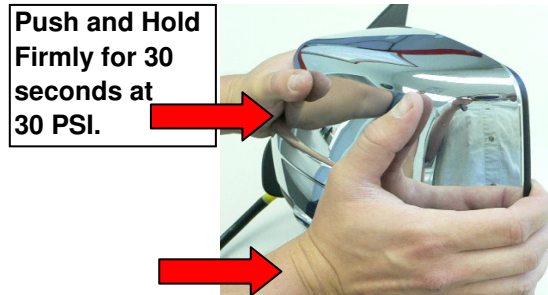
1



2

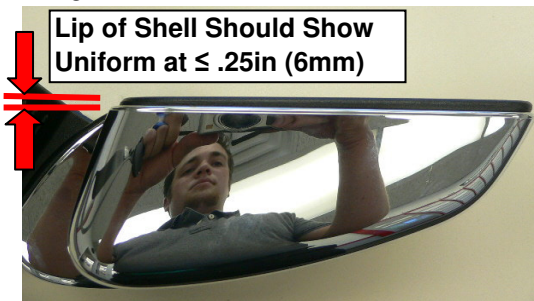


3



Push and Hold Firmly for 30 seconds at 30 PSI.

4

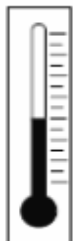


Lip of Shell Should Show Uniform at $\leq .25\text{in}$ (6mm)

5



6



110°F (43.3°C)

60°F (15.6°C)

Only Install on Dry Mirror within the Recommended Temperature Range

K6860460

