

2018+ JEEP WRANGLER JL
2020+ JEEP GLADIATOR

CORSA
PERFORMANCE

Part #: CC0002



IMPORTANT! WARRANTY AND INSTALLATION INSTRUCTIONS

Please Forward All Information to Consumer

Be sure to review the enclosed instructions prior to beginning the installation process. If you have any questions about the enclosed parts or instructions, or if you encounter a problem during installation:

CALL TECHNICAL SUPPORT: 440.891.0999 or 800.486.0999

**TO ACTIVATE YOUR WARRANTY GO TO:
CORSAPERFORMANCE.COM/WARRANTY**

COLOR INSTRUCTIONS ARE AVAILABLE BY PART NUMBER ON: CORSAPERFORMANCE.COM



NEVER work on a hot engine bay.
Allow time for the vehicle to cool.

INSTALL DIFFICULTY



RECOMMENDED TOOLS & SUPPLIES

- T-30 Torx Driver
- 10mm Socket Wrench
- 2.5mm Hex Wrench
- 11/16" Wrench

Please take time to read and understand these installation instructions.

CORSA recommends that the installation of this system be performed by a qualified service center or professional installer who has the necessary equipment, tools, and experienced personnel. However, if you decide to perform this installation yourself, the use of an additional person may be required.

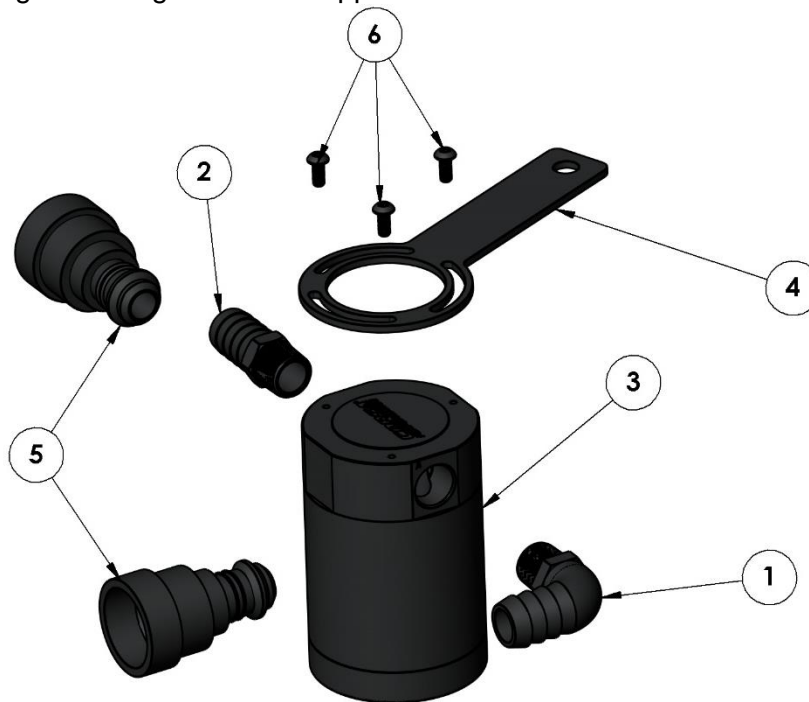
WARNING: Never work on a hot engine bay. Allow time for the vehicle to cool.

This warranty does not extend to damaged or defect in the finish of a product or to any product, that in the opinion of CORSA Performance, has been misused, damaged by accident or negligence, altered or modified in any way, faulty installation or installed contrary to CORSA installation instructions, or repaired by an unauthorized service facility.

Full warranty available on www.corsaperformance.com

Please confirm that all parts are present according to the bill of materials before beginning the installation.

If something is missing call Tech Support at 440.891.0999 or Toll Free: 1.800.486.0999

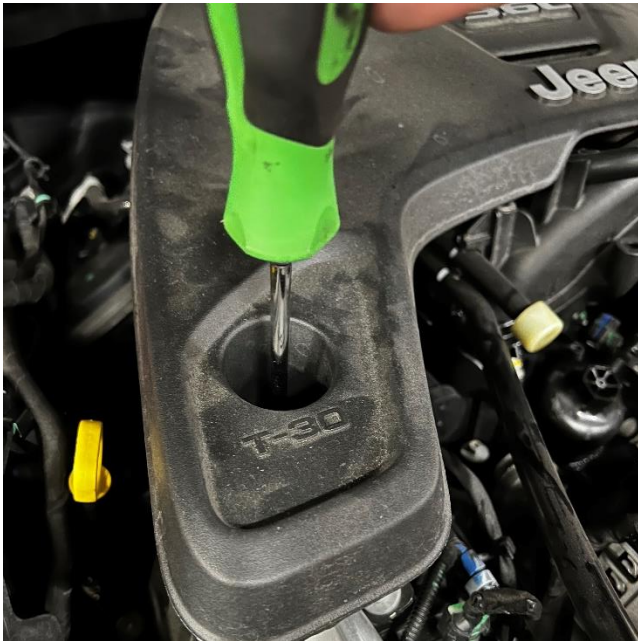


HARDWARE KIT

1. 3/8" NPT Barbed Elbow Fitting	1	3. Catch Can Body	1	6. 4mm Hex Screws	3
2. 3/8" NPT Barbed Straight Fitting	1	4. Bracket	1	NOT PICTURED:	
		5. 5/8" Quick Disconnect Fittings	2	7. 5/8" Hose A	42"
				8. 5/8" Hose B	13"

REMOVAL INSTRUCTIONS

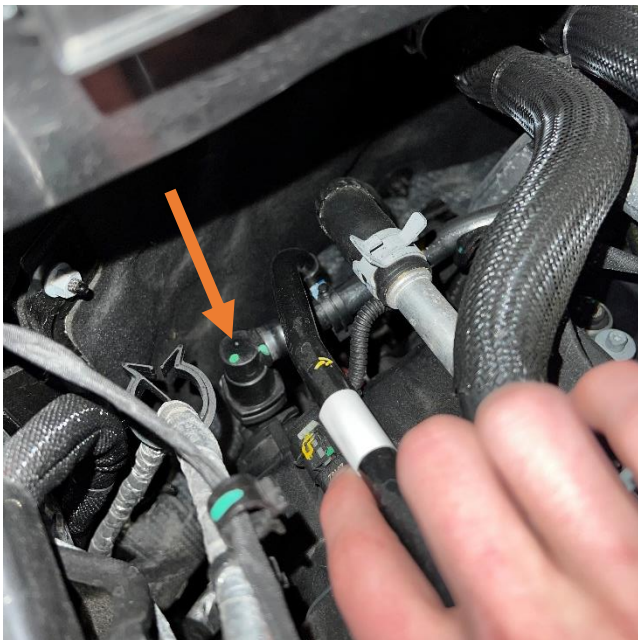
FACTORY PCV LINE



- 1.** Remove the 2 screws that secure the engine cover using a T-30 Screwdriver. Pull the cover out towards the front of the car to remove it from the grommets holding it in place.



- 2.** Locate the PCV line on driver's side of the intake manifold. Remove the quick disconnect fitting attached to the intake manifold by pressing on the grey tab and pulling.



- 3.** Locate and remove the opposite end of the PCV line attached to the crankcase on the back corner passenger side of the engine bay.



- 4.** There are 4 clips attached along the PCV line. Detach PCV line from clips to remove the line from the vehicle.

This concludes removal instructions.

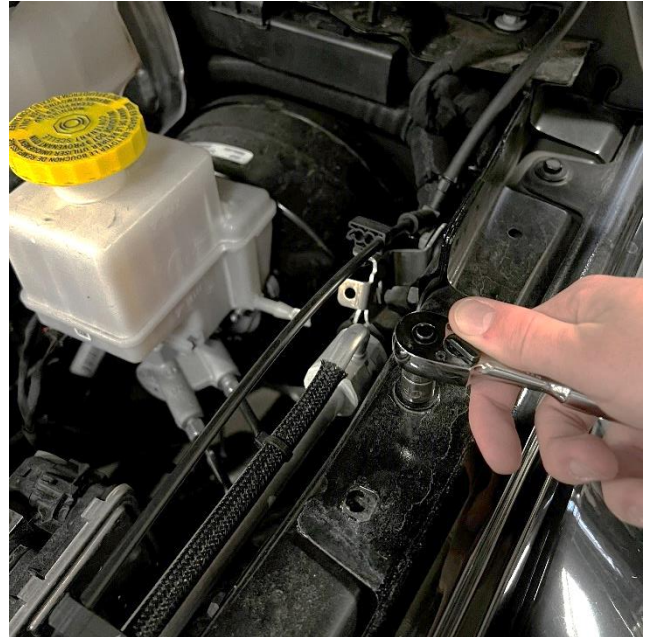
INSTALLATION INSTRUCTIONS

CORSA CATCH CAN SYSTEM

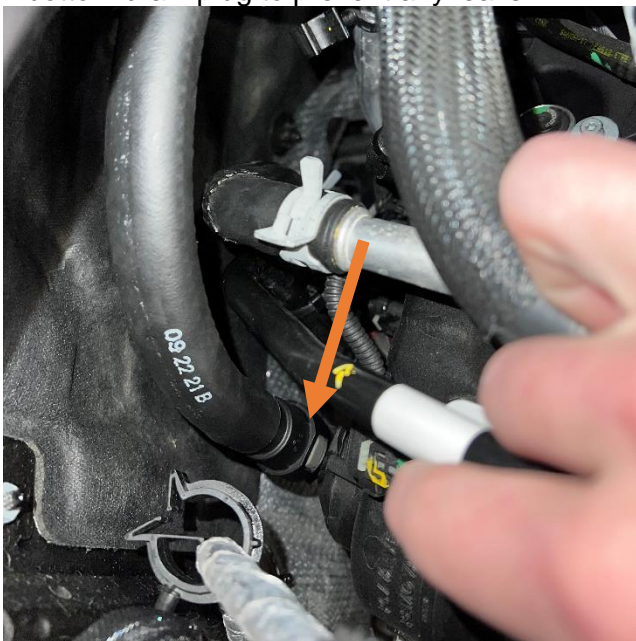


1. Use a 2.5mm Hex wrench to install the bracket in the orientation shown. Thread in barbed fittings by hand or by using an 11/16" wrench.

IMPORTANT: Corsa recommends using thread sealant or PTFE tape on barbed fittings and bottom drain plug to prevent any leaks.



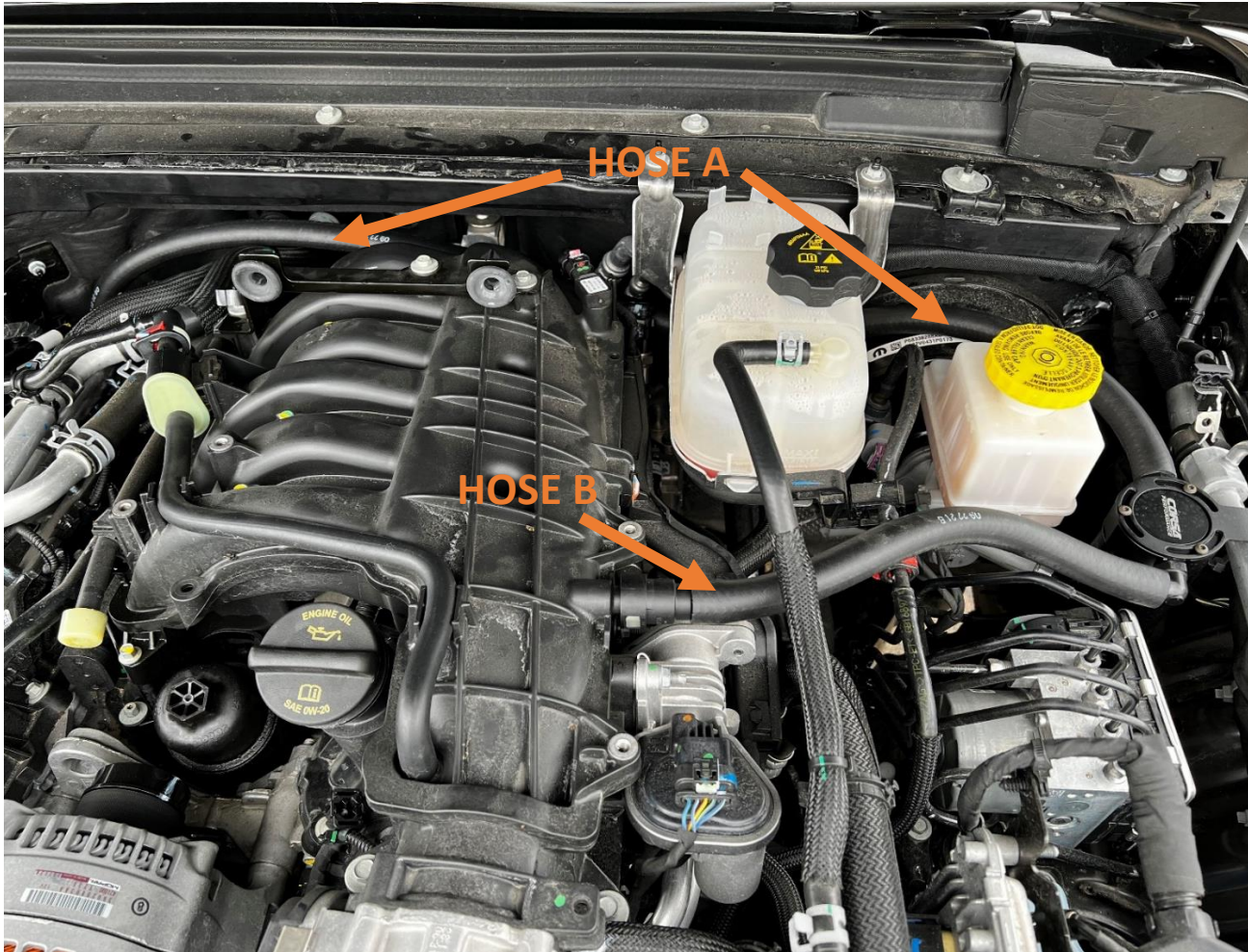
2. Using a 10mm socket, remove the bolt located next to the brake fluid reservoir on the driver's side. Install the catch can bracket using factory bolt to secure the catch can. Make sure the 90 degree fitting is installed in port B and straight fitting in port A of the can to properly route hose.



3. Attach quick disconnect fittings to 1 end of each hose. Attach Hose A to the crankcase side of the PCV system. Route the house back along the firewall and underneath the coolant reservoir and attach it to port A of the Catch can.



4. Connect the shorter hose to the intake manifold (see arrow) and attach the opposite end to port B of the catch can. You will hear a click when quick disconnect fittings are fully secured in place.



5. Make sure all fittings are secured in place and hose is pushed all the way over the barbed ends of the fittings. Reinstall engine cover.

This concludes installation instructions.

*Check that this catch can complies with your Federal, State and Local laws.
We recommend saving your stock PCV line.*

BEFORE ROAD TESTING

1. Start engine, leaving the transmission in park and securing the parking brake.
2. Make sure to look and listen for any unusual noises or air leaks. Repair problems if needed.
3. Once completed it will be necessary to check periodically, after a few heat cycles, for realignment and tightening of all connections.

EMPTYING CATCH CAN: Twist off the bottom of the catch can and dump captured oil back into engine or dispose of it. It is recommended to check and empty the catch can with every oil change.