

PERFORMANCE EXHAUST  
IMPORTANT WARRANTY & INSTALLATION  
INSTRUCTIONS ATTACHED

*Please Forward All Attached Information to Consumer  
Warranty Not Valid Unless Returned to CORSA Performance*

To Activate Your 10 Year LIMITED WARRANTY,  
Go to: [www.corsaperformance.com/Warranty](http://www.corsaperformance.com/Warranty)



**For Full-Color Installation Instructions, Please Visit:  
[CORSAPERFORMANCE.COM](http://CORSAPERFORMANCE.COM) and Search by Part Number**

Please be sure to review the enclosed instructions prior to beginning the installation process. If you have any questions about the enclosed parts, instructions or encounter a problem during installation:  
**CALL CORSA PERFORMANCE TECHNICAL ASSISTANCE AT 440.891.0999**

**Please take time to read and understand these installation instructions.**

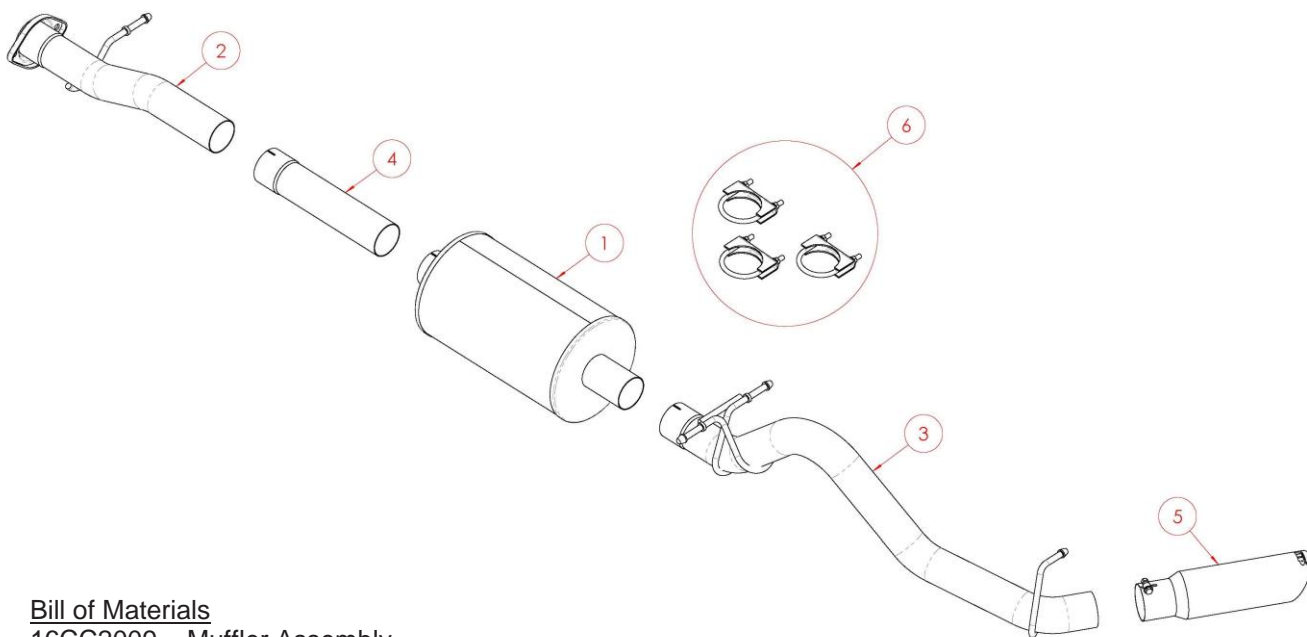
We recommend that the installation of this system be performed by a qualified service center or professional muffler installer who has the necessary equipment, tools and experienced personnel. However, if you decide to perform this install, the use of a lift and an additional person will be required.

**CAUTION:** Never work on a hot exhaust system. Allow time for the vehicle to cool. Always wear eye protection when working under a vehicle.

**Recommended Tools:**

- 3/8" drive ratchet
- 3/8" drive 13mm deep socket
- 3/8" drive 14mm deep socket
- 3/8" drive 15mm deep socket
- Grommet pullers
- Torque Wrench
- Safety glasses
- Penetrating Lubricant
- Soap and water solution

**Please confirm that all parts are present before beginning the factory exhaust system removal and dB exhaust system installation.**



Bill of Materials

1. 16CC2009 – Muffler Assembly
2. 16CC4010 – Head Pipe Assembly (2015-16)  
16CC4040 – Head Pipe Assembly (2017)
3. 16CC4033 – Tail Pipe Assembly
4. 16CC4037 – 140.5" WB Adapter Pipe
5. 16SE3023 – Slash Cut Tip Assembly
6. 18DR7047 – Hardware Kit

## Factory Exhaust System Removal:

1. Beginning near the factory flex section, remove the two retaining nuts at the flange connection using the ratchet and 15mm deep socket. Place the nuts in a safe location, as they will be reused during the installation of the Corsa exhaust system. **(Fig A)**

**Note:** Penetrating lubricant may make this step easier.

2. Downstream of the flange connection, remove the hanger from the rubber grommet using grommet pullers or a similar device. **(Fig B)**

**Note:** A soap and water solution may aid in the removal of hangers.

3. Support the front portion of the exhaust system (just in front of the muffler) using a jack stand or similar device.
4. Remove the two hangers from the rubber grommets downstream of the muffler using grommet pullers or a similar device. **(Fig C & D)**

**Note:** At this point, the exhaust is only supported by the jack stand and the hanger near the tip. Take care to not let the exhaust system tip or roll as it may damage the vehicle and/or cause personal injury.

5. Using the grommet pullers, remove the last hanger near the tip. **(Fig E)**
6. Carefully remove the factory exhaust system from the vehicle by pulling the exhaust system forward through the chassis, rotating it as needed to clear the suspension and spare tire heat shield. **(Fig F)**

**Note:** Take care to not damage the brake lines or wires near the rear axle when moving the exhaust system.

7. This concludes the factory exhaust system removal process.

REMOVAL PICTURES ON NEXT PAGE 

**Factory Exhaust Removal Pictures**



Fig. A



Fig. B



Fig. C



Fig. D



Fig. E

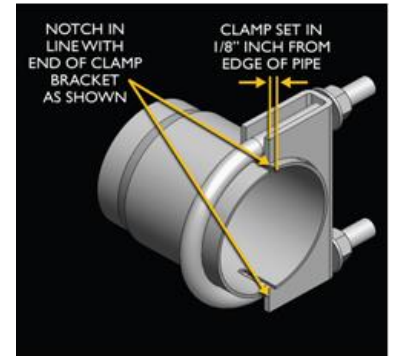


Fig. F

## Installation of dB Performance Exhaust System:

**NOTE:** The supplied double edge clamps in this system will crush and permanently deform the exhaust piping as they are tightened. **DO NOT** tighten these clamps any more than is necessary to lightly hold the exhaust components in place, until the very end of this installation process. It will be difficult or impossible to make any positional or rotational adjustments to the exhaust system after these clamps have been tightened down.

**VERY IMPORTANT:** Align all clamps so that the open edge of the clamp bracket is parallel and aligned with the notch in the pipe, and the outside edge of the clamp bracket is approximately 1/8" from the end of the pipe expansion. (See Fig. CLAMP) Failure to properly position or orient the clamps could result in a weak clamping load, or even a potential leak at the clamp joints.



1. Remove all exhaust system components from the shipping boxes, including the supplied clamps.
2. Locate the head pipe assembly. Insert the hanger into the factory rubber grommet. (Fig G) Next, align the head pipe flange with the stock flange, and secure with the two nuts set aside in step one of the removal process using the ratchet and 15mm socket. (Fig H).

**For 128.3" wheel base trucks, skip to Step #4. For 140.5" wheel base trucks, continue to Step #3.**

3. Locate the 140.5" WB adapter pipe and a U-clamp. Slide the clamp over the expanded inlet of the pipe and then slide the adapter onto the outlet end of the head pipe. Properly orient the U-clamp, then snugly tighten the clamp using the ratchet and 14mm socket. (Fig I).
4. Locate the muffler and another U-clamp. Slide the clamp over the expanded inlet of the muffler and then slide the muffler onto either the end of the head pipe (128.3" WB trucks) or the end of the 140.5" WB adapter pipe (140.5" WB trucks). Make sure the drain hole in muffler is oriented downwards. Snugly tighten the U-clamp using the ratchet and 14mm socket. (Fig J)
5. Locate the tail pipe and the last U-clamp. Slide the clamp over the expansion and from the rear of the vehicle, feed the pipe over the rear axle. Insert the hangers into the rubber grommets both near the muffler and the single hanger near the end of the tail pipe, then slide the tailpipe onto the end of the muffler. Adjust the tail pipe such that the portion of the hangers inside the grommets are level and parallel to the ground. Snugly tighten the U-clamp using the ratchet and 14mm socket. (Fig K, L, M, & N)
6. Locate the slash cut dB tip assembly. Slide the tip assembly onto the tail pipe. Adjust the rotation of the tip assembly until the dB performance logo is on top. Snugly tighten the clamp using the ratchet and 13mm socket. (Fig O)
7. Ensure the exhaust system is adjusted properly, making sure the head pipe hanger has proper chassis clearance, the tail pipe is not contacting the rear axle or chassis, and that the tip is adjusted to preference. Once satisfied, beginning at the front of the vehicle, fully tighten down all nuts and clamps using a torque wrench. Tighten the head pipe nuts using the 15mm socket to 45ft-lb, the nuts on the U-clamps to 35ft-lb using the 14mm socket, and the bolt on the tip assembly to 16-20 ft-lb.

**INSTALLATION PICTURES ON PAGES 6 & 7**



**NOTE:** During cold weather start-ups, you may experience an exhaust sound that is deeper and louder in tone than usual. This is temporary and will diminish to normal levels once your engine has reached its normal operating temperature.

**NOTE:** Immediately following the installation of your exhaust system, you may experience a trace of smoke after initial start-up. DO NOT be alarmed. The smoke is caused by the burning of a small amount of forming oil residue used in the manufacturing process.

## **dB Exhaust Installation Pictures**



Fig. G



Fig. H



Fig. I



Fig. J

**INSTALLATION PICTURES CONTINUED ON NEXT PAGE** 

**dB Exhaust Installation Pictures:**



Fig. K



Fig. L



Fig. M



Fig. N

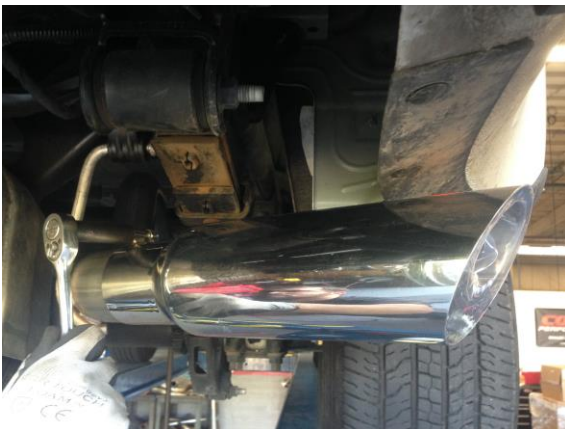


Fig. O