

## CS-FFSPR-EX-99 - Excursion Rear Full Progressive Spring Pack

### NOTE:

---

**Please review the product instructions prior to attempting installation to ensure installer is equipped with all tools and capabilities necessary to complete the product installation. We recommend thoroughly reading the instructions at least twice prior to attempting Installation.**

**Before beginning disassembly of the vehicle, check the “What’s Included” section of the instructions to ensure you’ve received all parts necessary to complete installation. Further, verify that the parts received are PROPER TO YOUR application (year range, motor, etc.) to avoid potential down-time in correcting potential discrepancies. Any discrepancies will be handled by Carli Suspension and the correcting products will be shipped UPS Ground.**

### LIFETIME PRODUCT WARRANTY

---

Carli Suspension provides a limited lifetime product warranty against defects in workmanship and materials from date of purchase to the original purchaser for all products produced by Carli Suspension. Parts not manufactured by, but made to Carli Suspension’s specifications by third party manufacturers will carry a warranty through their respective manufacturer. (i.e. King Shocks, Bilstein Shocks, Fox Shocks). Deaver Leaf Spring’s warranty will be processed by Carli Suspension.

Proof of purchase (from the original purchaser only) will be required to process any warranty claims. Carli Suspension products must be purchased for the listed Retail Price reflected by the price listed on the Carli Suspension Website at the time of purchase. Carli Suspension reserves the right to refuse warranty claims made by any customer refusing or unable to present proof of purchase, or presenting proof of purchase reflecting a price lower than Carli Suspension’s Retail Price at the time the item was purchased.

Carli Suspension’s Limited Lifetime Warranty excludes the following parts which are subject to wear: Track Bar Bushings, Track Bar Heim Joints, Limit Straps, Control Arm Bushings, Radius Arm Bushings, Shock Bushings, Sway Bar End Link Heim Joints, Shock Seals, Shock Bearings, and Corrosion on Shock Shafts or Bodies. These items will be warranted for a period of 60 days from the date of purchase only if determined to be installed properly signifying manufacturing defect. Carli Suspension cannot warrant a product’s cosmetic finish due to the varying extreme elements that may be encountered.

Any alterations, modifications, or improper installation, of the product will void this warranty. Products should be inspected for defect upon receipt and approved before installation. Any defect in NEW product will be warranted if returned before installation in its original packaging. Carli Suspension’s obligation under this warranty is limited to the repair or replacement of the defective product only. All costs of removal, installation or reinstallation, freight charges, incidental or consequential damage are expressly excluded from this warranty.

Carli Suspension is not responsible for damages and/or warranty of other vehicle parts related or non-related to the installed Carli Suspension product. This warranty shall not apply to any product that has been subjected to accident, negligence, alteration, abuse or misuse as determined by Carli Suspension. Carli Suspension reserves the right to refuse warranty claims if produced parts are combined and/or substituted with other aftermarket suspension products. Combination and/or substitution of other aftermarket suspension components may cause premature wear and/or product failure. Carli Suspension reserves the right to change/alter product without obligation to update any previously purchased products.



## PARTS CHECKLIST:

1. Carli/Deaver Rear Lift Springs & U-Bolts

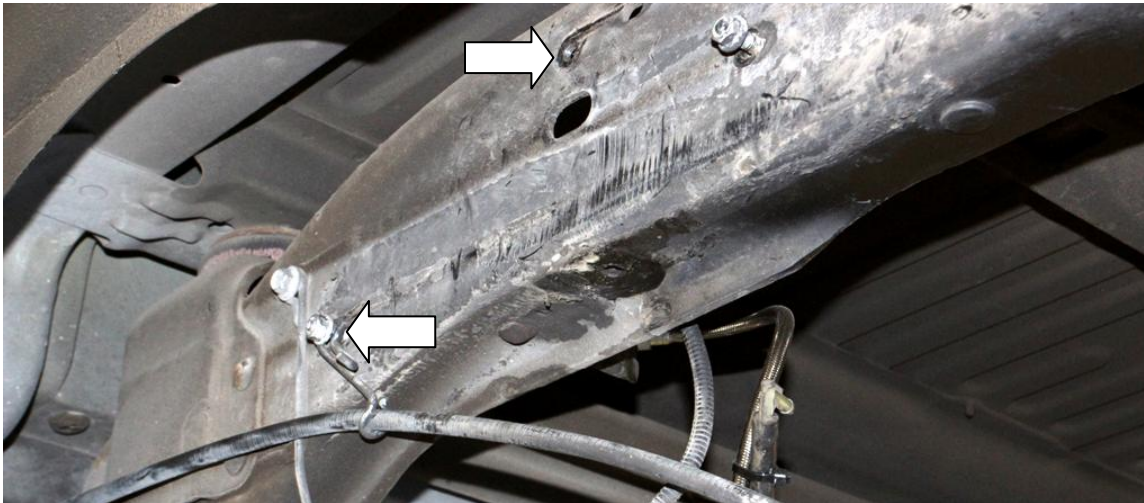
## NOTES:

- Installing Leaf Springs is a 2 person operation!
- This instruction is intended to be a continuation of a modular, full kit installation; if you're just installing the rear leaf springs, there may be additional steps/parts involved not mentioned in this document. The full kit instructions, including disassembly, can be downloaded from the System's page on our website.

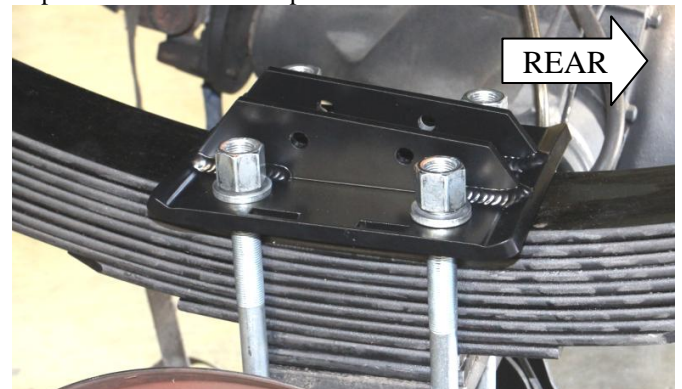
## REAR LEAF SPRING INSTALLATION INSTRUCTIONS

1. Install extended, stainless brake lines in the rear.
2. Remove rear shocks and discard. Keep the shock's lower fastening hardware as it will be reused with the Carli Shocks.
3. Droop the rear axle, then preload the spring VERY slightly using a jack to ensure disassembly is controlled.
4. Remove factory U-Bolts.
5. Remove front leaf spring bolt.
6. Remove the lower, rear leaf spring shackle bolt and pull the factory leaf springs/blocks as an assembly with the rear shackle.
7. Move the E-Brake cable retainer to provide additional slack to facilitate the extended travel of the Carli Springs.

**NOTE:** The upper arrow is the old location, the lower, left arrow points to the existing hardware that secures the fuel line bracket to the inside of the frame rail. This hardware will now secure the fuel lines to the inside and the E-Brake cable to the outside of the frame rail.



8. Transfer the shackle from the old spring to the rear of the Carli Spring pack, assemble hand tight.
9. Install the leaf springs from the rear, over the axle and assemble the spring to the front hanger with the factory bolt/nut.
10. Raise the rear of the spring to install the shackle bolt into the shackle bracket.
11. Using the jack, raise the axle to meet the spring ensuring the center-pin drops into its index on the perch.
12. Place the Carli spring plate on top of the leaf spring pack; the bump stop strike plate guides on top of the spring plate should angle downward toward the rear of the truck.



13. Assemble the u-bolts to the axle/plate and torque evenly to 110 lb/ft.
14. Included with the rear leaf springs is an insulated P-Clamp. Now that the E-Brake cable has more slack, it will need to be secured to the rear spring retainer to prevent it from flopping around. Using a C-Clamp, preload the spring retainer and remove the nut from the backside. Assemble the P-Clamp to the E-brake cable and slide the clamp onto the threads of the spring retainer, followed by the nut. Tighten the nut and remove the C-Clamp.



15. Continue to the next step in the kit instructions.

**If you're ONLY installing leaf springs:**

16. Install rear wheels.
17. Lower truck onto the ground.
18. BLEED BRAKES to ensure proper operation.
19. Now that the truck is at ride height and the suspension is loaded, Torque:
  - a. Lug Nuts: 150 lb/ft
  - b. U-Bolts: 110 lb/ft
  - c. Rear Leaf Spring, Front Hanger: 185 lb/ft, Rear Leaf Spring, Rear Shackle: 185 lb/ft.
20. Re-torque after first 500 Miles