

Instructions - CS-FEL-99 - Excursion & Super Duty Sway Bar End Links

NOTE:

Please review the product instructions prior to attempting installation to ensure installer is equipped with all tools and capabilities necessary to complete the product installation. We recommend thoroughly reading the instructions at least twice prior to attempting Installation.

Before beginning disassembly of the vehicle, check the “What’s Included” section of the instructions to ensure you’ve received all parts necessary to complete installation. Further, verify that the parts received are PROPER TO YOUR application (year range, motor, etc.) to avoid potential down-time in correcting potential discrepancies. Any discrepancies will be handled by Carli Suspension and the correcting products will be shipped UPS Ground.

LIFETIME PRODUCT WARRANTY

Carli Suspension provides a limited lifetime product warranty against defects in workmanship and materials from date of purchase to the original purchaser for all products produced by Carli Suspension. Parts not manufactured by, but made to Carli Suspension’s specifications by third party manufacturers will carry a warranty through their respective manufacturer. (i.e. King Shocks, Bilstein Shocks, Fox Shocks). Deaver Leaf Spring’s warranty will be processed by Carli Suspension.

Proof of purchase (from the original purchaser only) will be required to process any warranty claims. Carli Suspension products must be purchased for the listed Retail Price reflected by the price listed on the Carli Suspension Website at the time of purchase. Carli Suspension reserves the right to refuse warranty claims made by any customer refusing or unable to present proof of purchase, or presenting proof of purchase reflecting a price lower than Carli Suspension’s Retail Price at the time the item was purchased.

Carli Suspension’s Limited Lifetime Warranty excludes the following parts which are subject to wear: Track Bar Bushings, Track Bar Heim Joints, Limit Straps, Control Arm Bushings, Radius Arm Bushings, Shock Bushings, Sway Bar End Link Heim Joints, Shock Seals, Shock Bearings, and Corrosion on Shock Shafts or Bodies. These items will be warranted for a period of 60 days from the date of purchase only if determined to be installed properly signifying manufacturing defect. Carli Suspension cannot warrant a product’s cosmetic finish due to the varying extreme elements that may be encountered.

Any alterations, modifications, or improper installation, of the product will void this warranty. Products should be inspected for defect upon receipt and approved before installation. Any defect in NEW product will be warranted if returned before installation in its original packaging. Carli Suspension’s obligation under this warranty is limited to the repair or replacement of the defective product only. All costs of removal, installation or reinstallation, freight charges, incidental or consequential damage are expressly excluded from this warranty.

Carli Suspension is not responsible for damages and/or warranty of other vehicle parts related or non-related to the installed Carli Suspension product. This warranty shall not apply to any product that has been subjected to accident, negligence, alteration, abuse or misuse as determined by Carli Suspension. Carli Suspension reserves the right to refuse warranty claims if produced parts are combined and/or substituted with other aftermarket suspension products. Combination and/or substitution of other aftermarket suspension components may cause premature wear and/or product failure. Carli Suspension reserves the right to change/alter product without obligation to update any previously purchased products.

PARTS CHECKLIST:

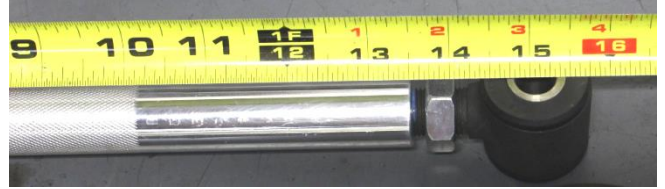
1. (2) End Links:
 - a. (2) Bodies
 - b. (4) Loaded Rod Ends
 - c. (4) Jam Nuts
2. End Link Hardware:
 - a. (2) ½" x 6" Bolts
 - b. (2) ½" x 3" Bolts
 - c. (10) ½" Flat Washers
 - d. (4) ½" C-Lock Nuts
 - e. (2) ½" Spacer Sleeves

NOTES:

- This instruction is intended to be a continuation of a modular, full kit installation; if you're just installing the front extended End Links, there may be additional steps/parts involved not mentioned in this document. The full kit instructions, including disassembly, can be downloaded from the System's page on our website.

EXTENDED SWAY BAR LINK INSTALLATION INSTRUCTIONS

1. Assemble end links so they're 14" center-to-center and the ends are parallel. (Picture shows 15" as we burned and inch on the tape measure)



2. Coat the jam-nut threads lightly with Loctite and tighten jam nuts.

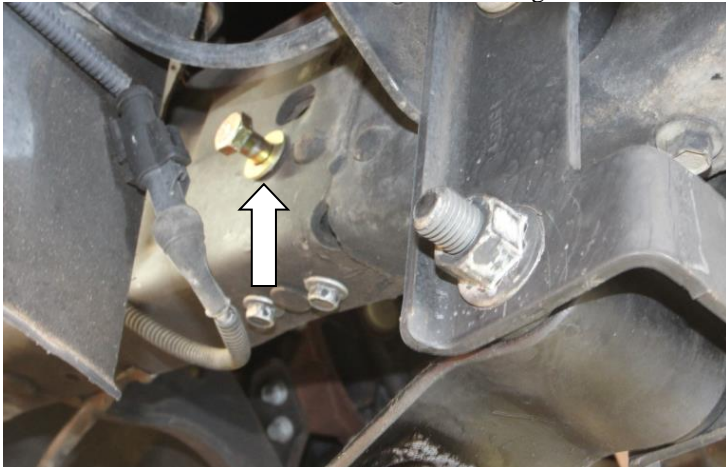


3. The following is a picture for reference of the Sway bar link assembly as it's to be installed.

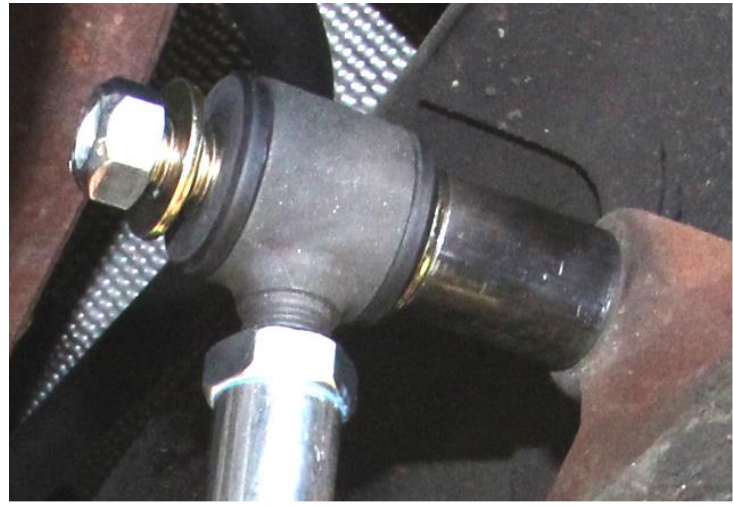
NOTE: Picture shows the bolt flipped. The nut/washer should be what preloads the bushing.



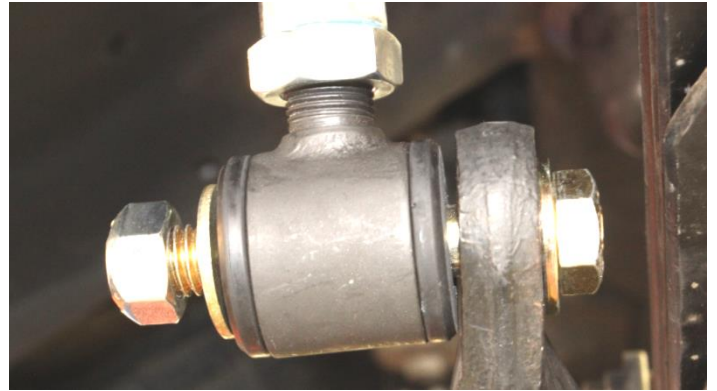
4. Insert ½" bolt and washer into the frame rail facing inward



5. Assemble the spacer, washer, end link, washer, nut to the stud
Repeat on other side.



6. Install end link into the sway bar with provided ½” Hardware. Bolt faces inward with a washer, then sway bar, end link, washer, C-Lock nut.
7. Torque all ½” hardware to 65 lb/ft.



8. On the Driver’s side, it may be necessary to cut the threads off the lower end link bolt after the C-lock to provide proper clearance from the drive shaft boot. Our truck didn’t require it but each truck should be checked for clearance.
9. Continue to the next step in the kit instruction.

