



Installation Instructions – ALL JMS PedalMAX Kit Part Numbers Drive-By-Wire Electronic Throttle Enhancement Device

Included in the PedalMAX kit:

- (1) PedalMAX Control Box
- (1) PedalMAX Wire Harness
- (1) On-the-fly Control Knob
- (4) Cable ties

Please read the complete installation instructions before attempting to install this product.

PedalMAX will increase the torque and responsiveness of the OEM drive-by-wire throttle assembly.



PedalMAX mounts inside the vehicle cabin, under the dash near the accelerator pedal sensor. Make sure that PedalMAX does not come into direct contact with extreme engine heat (+370F).

Step 1 - Connect the Assembly:

Attach the black PedalMAX device to the wiring harness; plug the device into the 26-pin connector firmly, until latched.



Step 2 - Important: Disconnect the positive terminal of the battery before installing this product. If you do not disconnect the battery the factory computer will not learn the correct starting pedal position.

Locate the pedal position sensor assembly. It is located on the top of the accelerator pedal.



Step 3 - Unplug the wiring harness from the pedal position sensor.

Note: To separate most connectors from the sensor: slide back or release the locking tab on the harness connector, or press the tab down on the connector and unplug from the pedal.



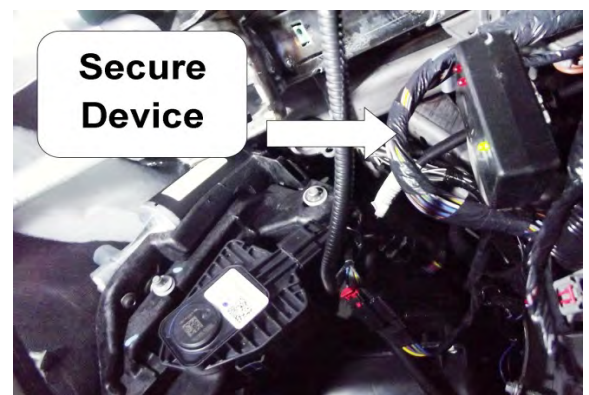
Step 4 – Connect the in-line Harness

Plug the PedalMAX device in-line between the pedal position sensor and OE wiring harness by connecting the male and female PedalMAX connectors to the Original Factory connector and sensor.



Step 5 – Secure PedalMAX/Harness

Secure the PedalMAX unit using the supplied cable ties. The device should not be hanging loosely or unsecured. Do not attach or mount to any moving assemblies such as the steering column.



Optional 12-volt input feature (Not Required-Part 1):

PedalMAX and all BoostMAX main harnesses now include an optional 12-volt input wire.

Connecting this wire to +12v enables the LED's.

The LED's are used for product diagnostic purposes. To use the LED feature, simply plug the weather-pack connector on the main harness, into the 12-volt input harness connector and connect the ring terminal directly to the battery.



Optional 12-volt input feature (Not Required-Part 2):

Connect the ring terminal on the 12-volt input harness directly to the positive side battery cable and fasten the cable terminal nut securely. You can also attach the 12-volt ring terminal to another 12-volt source such as the main power supply going into the fuse box.

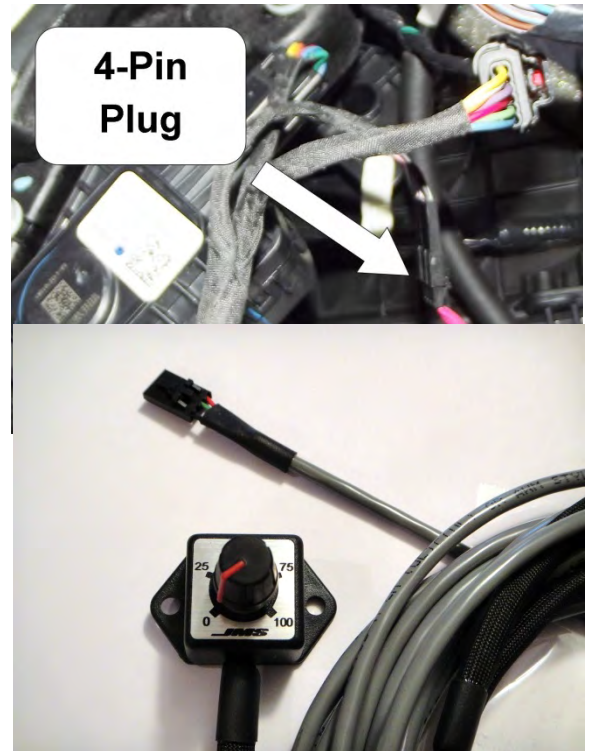


Step 6 - Test the device – Once the device is installed and secured, insert the ignition key, and start the vehicle. If you're using the optional 12-volt input, look at the device to make sure the green LED is illuminated, which alerts you that the device is active and functioning. If the device is not connected to 12-volt, there will be no LED illuminated (however the device will still function).

Step 7 - Test drive the vehicle – Drive the vehicle under normal conditions. You should notice a significant improvement in throttle responsiveness and acceleration.

If you don't connect the knob: The PedalMAX device is pre-configured to provide an increase in throttle response. Removing the knob will pre-program PedalMAX so you 60% of the control knob setting.

On-the-fly Control Knob: The control knob is designed to plug into the 4-pin connector on the main wire harness. This knob provides the ultimate control over pedal sensitivity with a range of 0% (stock pedal) to 100% (maximum increase). The control knob is fully adjustable "On-The-Fly".



Notes and Troubleshooting:

- **Check Engine Light after install** - If you experience a check engine light and have no pedal response after starting the vehicle immediately following installation:
 - **If you have a KEY** - turn the key back to the off position, remove the ignition key, wait 60 seconds for the ECU to reset and then restart the vehicle. When you restart the vehicle, the check engine light will be gone and pedal response will be restored.
 - **If you have a key FOB:** make sure that the vehicle is off and that the dash lights are off for at least 60 seconds. When you restart the vehicle, the check engine light will be gone and pedal response will be restored.
- LED Diagnostic Lights:
 - **Green LED light** = Solid LED, device is powered ON and working
 - **Blue LED light:**
 - Solid Blue LED = Knob is plugged in and set to 0-25%
 - Flashing slow Blue LED = Knob is plugged in and set to 25-60%
 - Flashing fast Blue LED = Knob is plugged in and set to 60-100%
 - **Green, Yellow & Blue LED's Flashing** = Pedal is not connected or has an error.

Stacking PedalMAX in-line with BoostMAX:

PedalMAX and BoostMAX have been pre-engineered to work together on all Ford EcoBoost vehicles.

- Combining the two products together provides an additional performance enhancement.
- When stacking the two products, PedalMAX will be connected to the PEDAL and in-line between the BoostMAX pedal connector and the factory harness.
- PedalMAX female connector connects to the Pedal; the male PedalMAX connector connects to the female BoostMAX connector and the male BoostMAX connector connects to the factory harness.
- Using PedalMAX in conjunction with BoostMAX adds low-end horsepower and torque, along with an increase in throttle responsiveness.



Supported - GM Vehicles

PX1015GM Supports the Following GM Vehicles:

- 2008-2019 Buick Enclave
- 2011-2016 Cadillac CTS
- 2006-2011 Cadillac DTS
- 2005-2012 Cadillac STS
- 2004-2009 Cadillac XLR
- 2010-2015 Chevrolet Camaro
- 2014-2017 Chevrolet Caprice PPV
- 2006-2013 Chevrolet Corvette
- 2006-2013 Chevrolet Impala
- 2014-2016 Chevrolet Impala - Limited
- 2008-2019 Chevrolet Equinox
- 2009-2019 Chevrolet Traverse
- 2008-2019 GMC Acadia
- 2010-2019 GMC Terrain

PX1015GMT Supports the Following GM Vehicles (trucks):

- 2011-2019 Cadillac Escalade
- 2008-2019 Cadillac Escalade EXT
- 2008-2019 Cadillac Escalade ESV
- 2008-2013 Chevrolet Avalanche
- 2012-2013 Chevrolet Captiva Sport
- 2008-2018 Chevrolet Silverado 1500
- 2008-2019 Chevrolet Silverado 2500
- 2008-2019 Chevrolet Silverado 3500
- 2008-2019 Chevrolet Suburban
- 2008-2019 Chevrolet Tahoe
- 2008-2009 Chevrolet Trailblazer
- 2008-2019 GMC Sierra 1500
- 2008-2019 GMC Sierra 2500
- 2008-2019 GMC Sierra 3500
- 2008-2019 GMC Sierra Denali
- 2008-2019 GMC Yukon
- 2008-2019 GMC Yukon Denali

PX1015GMV2 Supports the Following GM Vehicles:

- 2011-2013 Chevrolet Caprice PPV
- 2008-2018 Chevrolet Colorado
- 2008-2018 Chevrolet Cruze
- 2014-2019 Chevrolet Impala
- 2012-2016 Malibu
- 2008-2018 Chevrolet Express 1500, 2500, 3500, 4500
- 2006-2011 Chevrolet HHR
- 2006-2010 Hummer H3
- 2013-2017 Cadillac XTS
- 2008-2016 Cadillac SRX
- 2008-2018 GMC Canyon
- 2008-2018 GMC Savana 1500, 2500, 3500, 4500



PX1415GM Supports the Following GM Vehicles:

- 2013-2019 Cadillac ATS
- 2014-2019 Cadillac CTS
- 2016-2019 Cadillac CT6
- 2017-2019 Cadillac CTS
- 2014-2019 Chevrolet Corvette C7
- 2014-2018 Chevy SS sedan
- 2016-2019 Chevrolet Camaro
- 2016-2019 Chevrolet Malibu
- 2014-2019 Chevrolet Caprice

PX1920GMT Supports the Following GM Vehicles:

- 2019 Chevrolet Silverado (Gas)
- 2019 CMC Sierra (Gas)

Supported - FORD Vehicles

PX1114F Supports the Following FORD Vehicles:

- 2011-2019 Ford F-150
- 2011-2019 Ford F-250
- 2011-2019 Ford F-350
- 2011-2019 Ford F-450
- 2011-2019 Ford F-550
- 2011-2019 Ford Mustang
- 2011-2019 Ford Focus
- 2011-2019 Ford Fusion
- 2011-2019 Ford Taurus
- 2011-2019 Ford Edge
- 2011-2019 Ford Escape
- 2012-2019 Ford Flex
- 2011-2019 Ford Explorer
- 2011-2019 Ford Expedition
- 2012-2019 Ford C-Max
- 2012-2019 Ford B-Max
- 2010-2019 Ford S-Max
- 2011-2019 Ford Transit Connect
- 2011-2019 Ford Transit 150
- 2011-2019 Ford Transit 250
- 2011-2019 Ford Transit 350
- 2011-2019 Ford Transit 350 HD
- 2014-2019 Police Interceptor Utility
- 2013-2019 Police Interceptor Sedan
- 2011-2019 Ford Ranger T6 (Export)
- 2016-2019 Lincoln MKC
- 2011-2019 Lincoln MKX
- 2013-2019 Lincoln MKZ
- 2011-2019 Lincoln MKS
- 2011-2019 Lincoln MKT
- 2011-2019 Lincoln Navigator

PX0510F Supports the Following Ford Vehicles:

- 2008-2011 Ford Crown Victoria
- 2005-2010 Ford Mustang
- 2008-2010 Ford Taurus
- 2007-2010 Ford Edge
- 2005-2008 Ford Expedition
- 2005-2010 Ford Explorer
- 2007-2010 Ford Explorer Sport Trac
- 2008 Ford F-150
- 2006-2010 Ford F-250
- 2006-2010 Ford F-350
- 2006-2010 Ford F-450
- 2006-2010 Ford F-550
- 2009-2010 Lincoln MKS
- 2009-2010 Lincoln MKZ
- 2007-2010 Lincoln MKX
- 2008-2011 Lincoln Town Car
- 2006-2008 Lincoln Mark LT
- 2005-2008 Lincoln Navigator

PX0510FV2 Supports the Following Ford Vehicles:

- 2006-2010 Ford Fusion
- All other 2004-2010 Ford car or truck with 10-pin Pedal connector

PX0510FV3 Supports the Following Ford Vehicles:

- 2003 Ford F-250
- 2003 Ford F-350
- 2003 Ford F-450
- 2003 Ford F-550
- 2003-2005 Ford Excursion

PX1415ST Supports the Following Vehicles:

- 2013-2019 Ford Fiesta and Fiesta ST
- 2013-2019 European-based Ford



Chrysler - Dodge - Ram – Fiat – Jeep Vehicles

PX1114DCX Supports the Following Vehicles:

- 2008-2019 Dodge Challenger
- 2006-2019 Dodge Charger
- 2007-2011 Dodge Dakota
- 2006-2013 Dodge Durango
- 2007-2011 Dodge Nitro
- 2007-2018 Dodge Ram 1500
- 2007-2018 Dodge Ram 2500
- 2007-2018 Dodge Ram 3500
- 2008-2018 Dodge Ram 4500
- 2008-2018 Dodge Ram 5500
- 2005-2019 Chrysler 300
- 2011-2019 Jeep Compass
- 2007-2019 Jeep Grand Cherokee
- 2007-2019 Jeep Patriot
- 2007-2018 Jeep Wrangler JK

PX1114DCX2 Supports the Following Vehicles:

- 2011-2016 Chrysler 200
- 2007-2010 Chrysler Sebring
- 2008-2014 Dodge Avenger
- 2007-2012 Dodge Caliber
- 2009-2015 Dodge Journey
- 2007-2019 Jeep Compass
- 2007-2019 Jeep Patriot

PX1114DCX3 Supports the Following Vehicles:

- 2012-2018 Fiat 500
- 2015-2016 Chrysler 200
- 2014-2015 Dodge Dart
- 2015-2018 Jeep Cherokee

PX1920DCX4 Supports the Following Vehicles:

- 2019-2020 Dodge Ram Truck (Gas)
- 2018-2020 Jeep Wrangler JL

Toyota – Lexus – Infinity Vehicles

PX1116TYV1 Supports the Following Vehicles:

- 2003-2009 Toyota 4 Runner
- 2007-2014 Toyota FJ Cruiser
- 2005-2019 Toyota Tacoma

PX1116TYV2 Supports the Following Vehicles:

- 2007-2016 Toyota Camry
- 2008-2013 Toyota Corolla
- 2008-2019 Toyota Highlander
- 2009-2014 Toyota Matrix
- 2010-2014 Toyota Sienna
- 2009-2014 Toyota Venza
- 2008-2015 Toyota Land Cruiser
- 2008-2015 Toyota Sequoia
- 2007-2019 Toyota Tundra
- 2012-2014 Toyota Yaris
- 2013-2015 Toyota Avalon
- 2010-2019 Toyota 4 Runner
- 2009-2019 Toyota Rav 4
- 2012-2016 Toyota FRS
- 2017-2019 Toyota 86
- 2012-2016 Subaru BRZ
- 2010-2019 Lexus GX460
- 2008-2019 Lexus LX570
- 2013-2019 Lexus ES300H
- 2007-2019 Lexus ES350
- 2010-2019 Lexus RX350
- 2010-2019 Lexus RX450H
- 2015-2016 Infinity QX60

PX1116TYV3 Supports the Following Vehicles:

- 2017-2019 Toyota Camry
- 2014-2019 Toyota Corolla
- 2018-2019 Lexus RC F



Subaru Vehicles

PX1518SBV1 Supports the Following Vehicles:

- 2015-2019 Subaru WRX

PX1116TYV2 Supports the Following Vehicles:

- 2012-2016 Subaru BRZ

Jaguar – Range Rover – Land Rover Vehicles

PX1114JGV1 Supports the Following Vehicles:

- 2014-2018 Jaguar F-Type
- 2016-2018 Jaguar F Pace
- 2016-2018 Jaguar XE
- 2010-2015 Jaguar XK
- 2011-2018 Jaguar XF
- 2011-2018 Jaguar XJ
- 2011-2018 Range Rover - ALL
- 2011-2018 Land Rover – ALL

Polaris Vehicles

PX1418PO1 Supports the Following Vehicles:

- 2014-2019 Polaris General
- 2014-2019 Polaris Ranger
- 2014-2019 Polaris RZR
- 2015-2016 Polaris Slingshot

PX1418PO2 Supports the Following Vehicles:

- 2017-2019 Polaris Slingshot

Can-AM Vehicles

PX1418CA1 Supports the Following Vehicles:

- 2014-2019 Can Am Commander
- 2014-2019 Can Am Maverick

Textron/Arctic Cat Vehicles

PX1719TX1 Supports the Following Vehicles:

- 2017-2019 Textron Wildcat
- 2017-2019 Textron Havoc
- 2017-2019 Textron Stampede
- 2017-2019 Textron Prowler